

# Control de calidad GNSS GPS diario

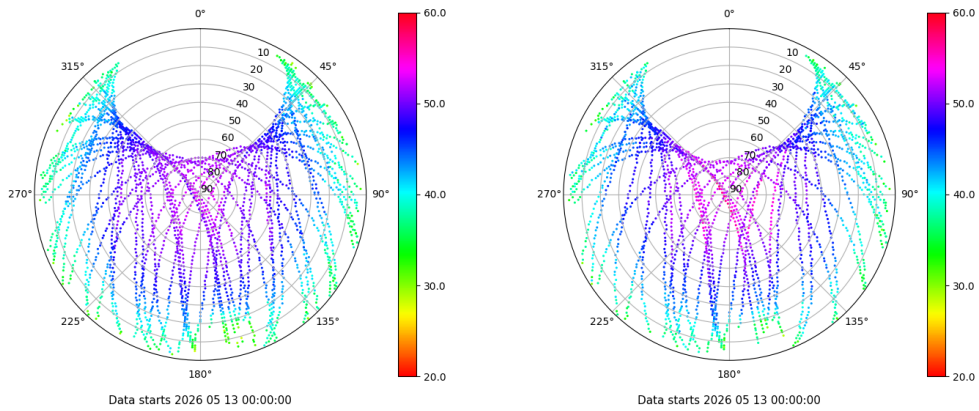
Estacion: IGNE

Fecha: 2026 05 13

Dia del año: 133

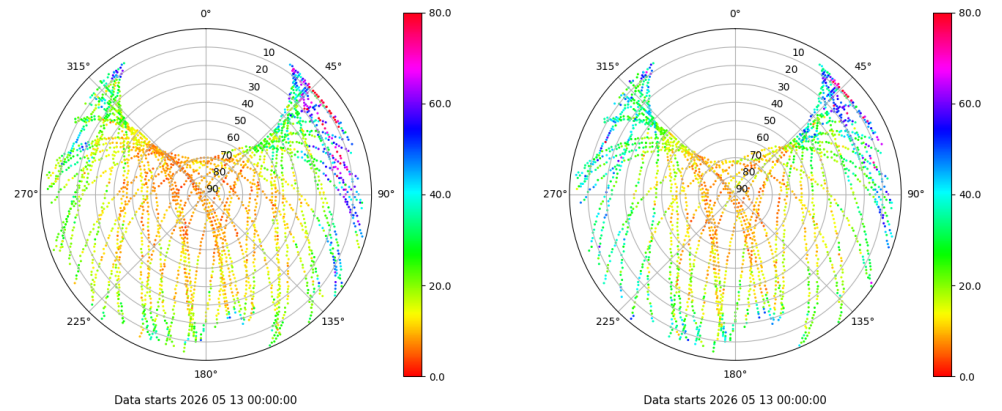
## Señal-Ruido GPS L1 y L2

Skyplot for station IGNE. Signal to Noise S1C Data file IGNE00ESP\_R\_2026133.xtr Skyplot for station IGNE. Signal to Noise S2S Data file IGNE00ESP\_R\_2026133.xtr



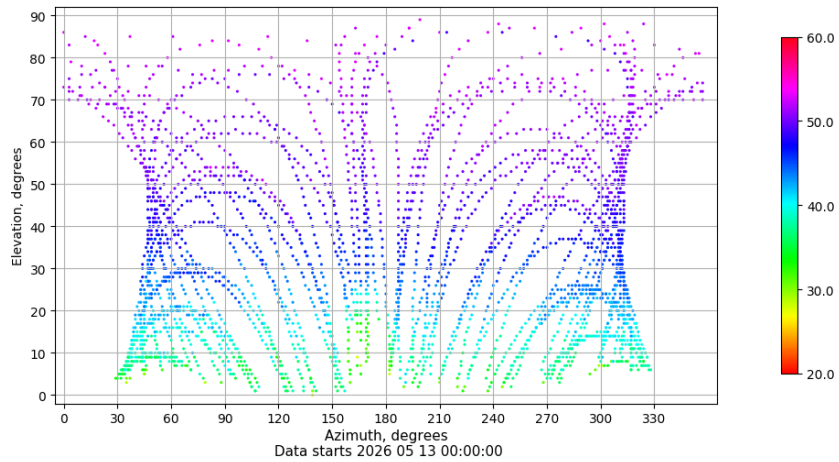
## Multipath GPS L1 y L2

Skyplot for station IGNE. Parameter M1C Data file IGNE00ESP\_R\_2026133.xtr Skyplot for station IGNE. Parameter M2S Data file IGNE00ESP\_R\_2026133.xtr



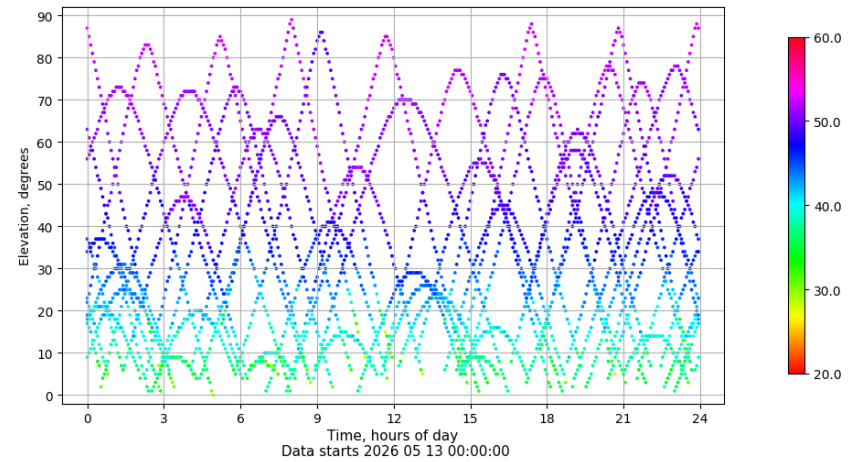
## Azimuth-Elevacion

Azimuth-elevation plot for station IGNE. Signal to Noise S1C Data file IGNE00ESP\_R\_2026133.xtr



## Tiempo-Elevacion

Time-elevation plot for station IGNE. Signal to Noise S1C Data file IGNE00ESP\_R\_2026133.xtr



# Control de calidad GNSS GLO diario

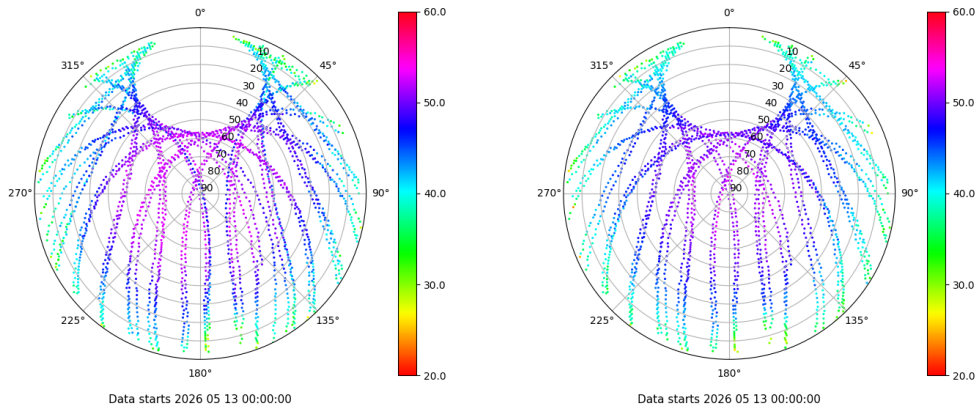
Estacion: IGNE

Fecha: 2026 05 13

Dia del año: 133

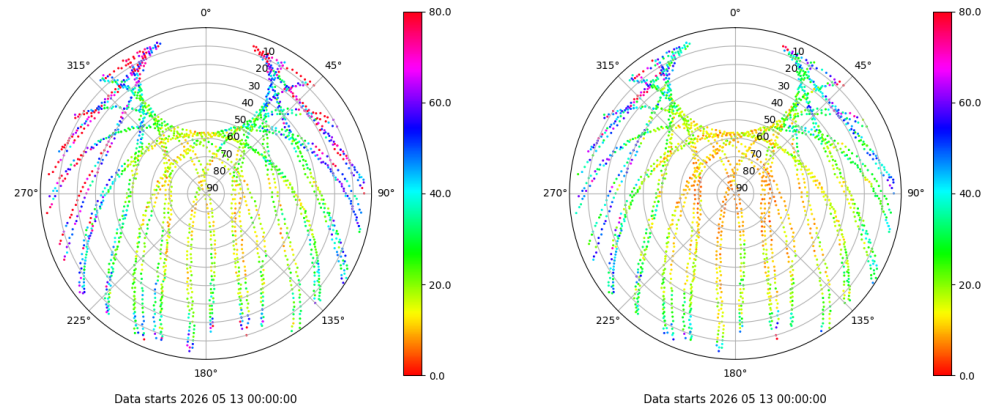
## Señal-Ruido GLO L1 y L2

Skyplot for station IGNE. Signal to Noise S1C Data file IGNE00ESP\_R\_2026133.xtr Skyplot for station IGNE. Signal to Noise S2C Data file IGNE00ESP\_R\_2026133.xtr



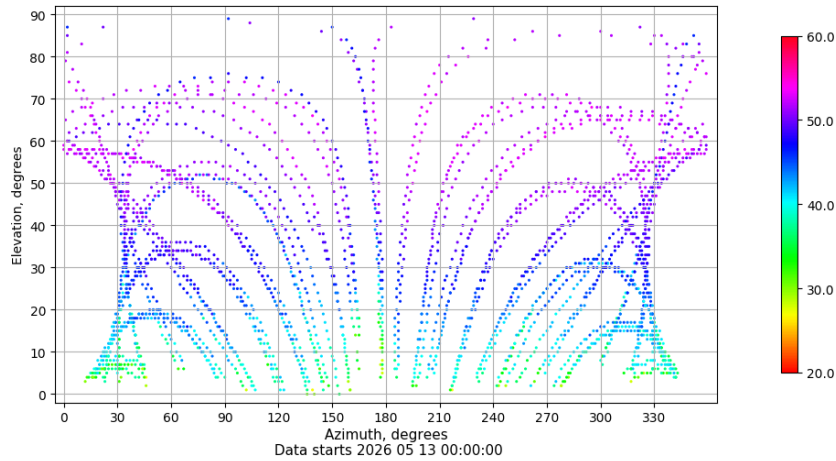
## Multipath GLO L1 y L2

Skyplot for station IGNE. Parameter M1C Data file IGNE00ESP\_R\_2026133.xtr Skyplot for station IGNE. Parameter M2C Data file IGNE00ESP\_R\_2026133.xtr



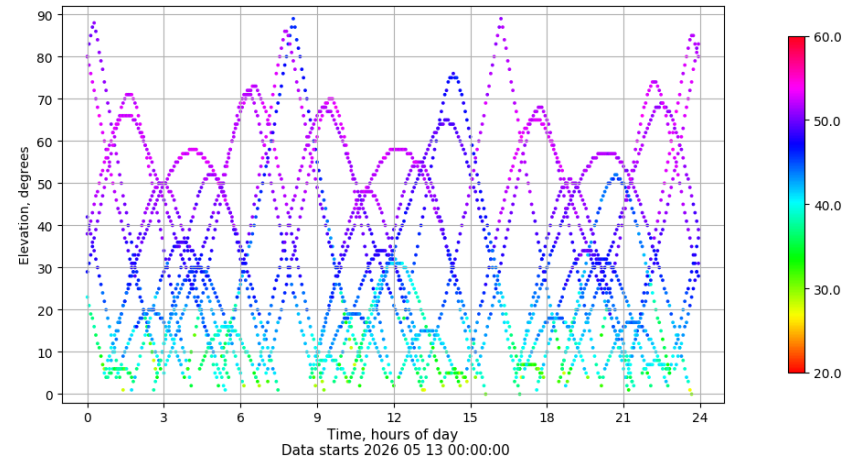
## Azimuth-Elevacion

Azimuth-elevation plot for station IGNE. Signal to Noise S1C Data file IGNE00ESP\_R\_2026133.xtr



## Tiempo-Elevacion

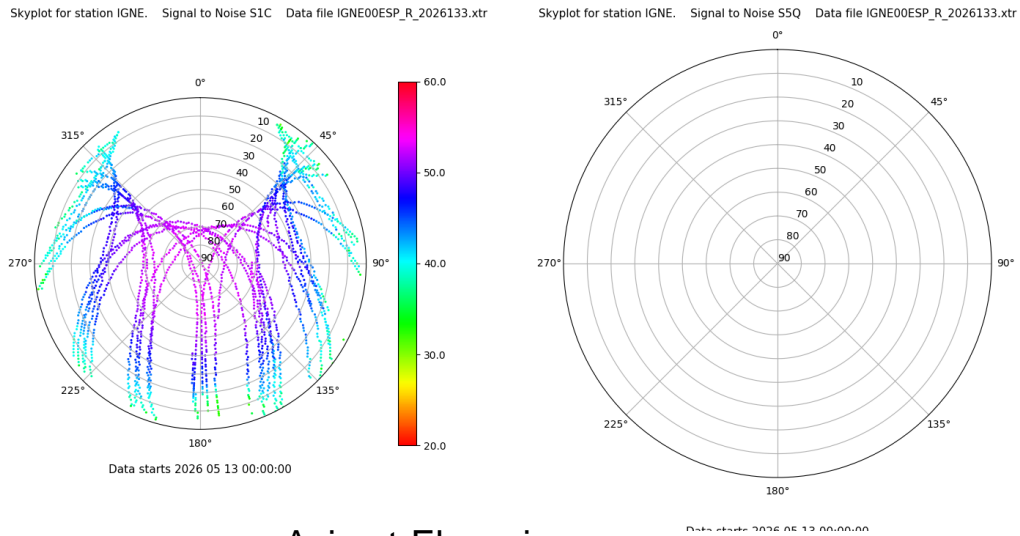
Time-elevation plot for station IGNE. Signal to Noise S1C Data file IGNE00ESP\_R\_2026133.xtr



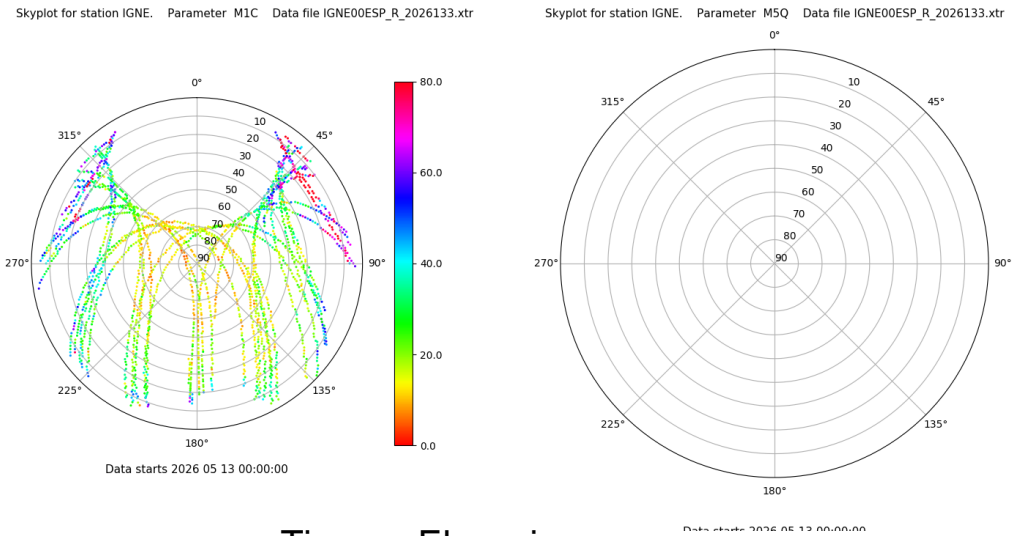
# Control de calidad GNSS GAL diario

Estacion: IGNE  
 Fecha: 2026 05 13  
 Dia del año: 133

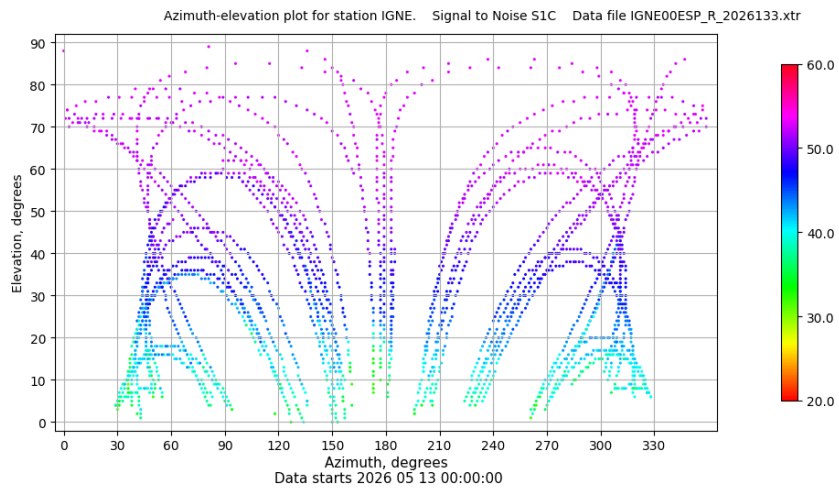
## Señal-Ruido GAL E1 y E5



## Multipath GAL E1 y E5



## Azimuth-Elevacion



## Tiempo-Elevacion

