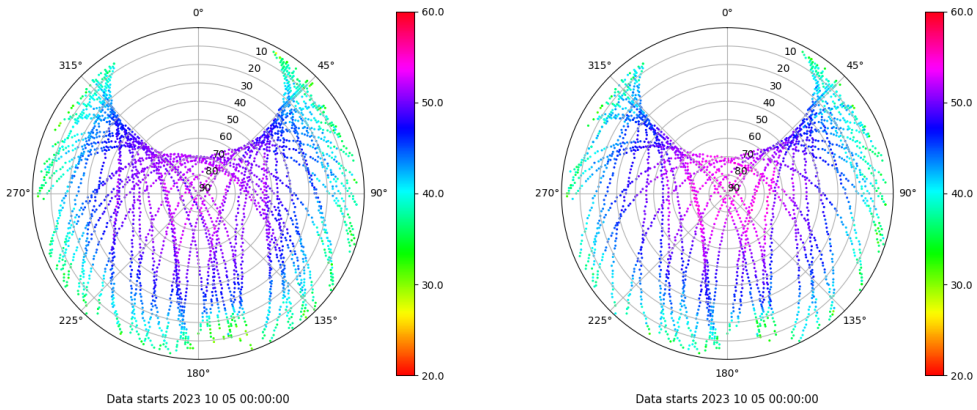


# Control de calidad GNSS GPS diario

Estacion: IGNE  
 Fecha: 2023 10 05  
 Dia del año: 278

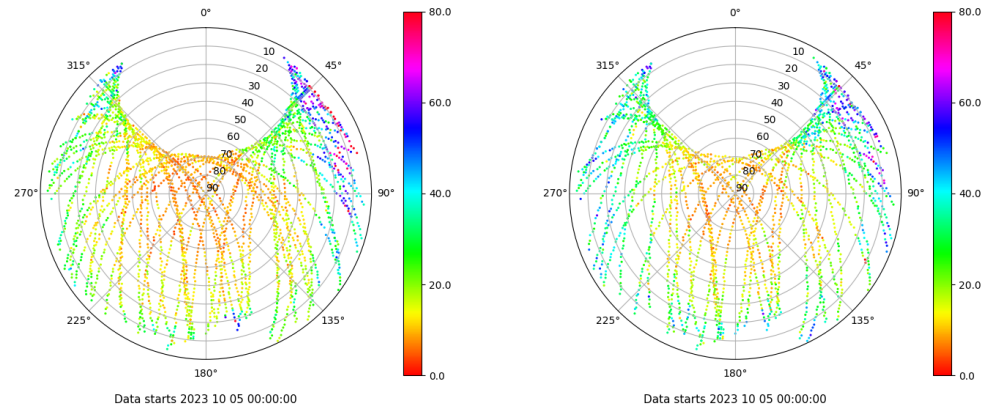
## Señal-Ruido GPS L1 y L2

Skyplot for station IGNE. Signal to Noise S1C Data file IGNE00ESP\_R\_2023278.xtr Skyplot for station IGNE. Signal to Noise S2S Data file IGNE00ESP\_R\_2023278.xtr



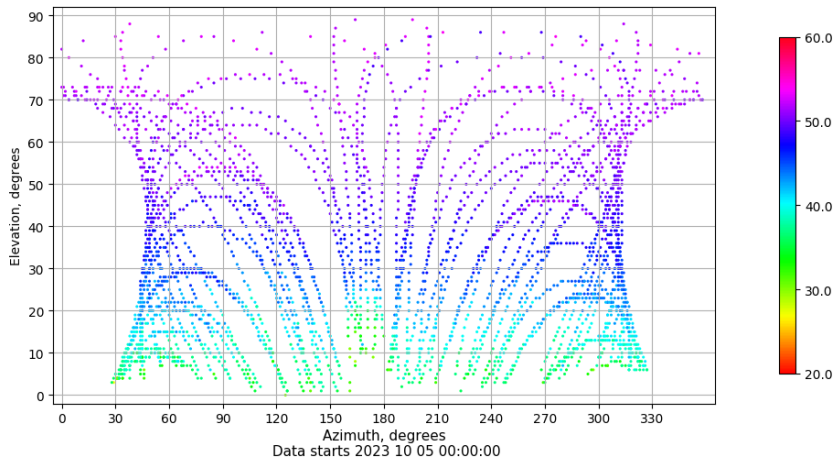
## Multipath GPS L1 y L2

Skyplot for station IGNE. Parameter M1C Data file IGNE00ESP\_R\_2023278.xtr Skyplot for station IGNE. Parameter M2S Data file IGNE00ESP\_R\_2023278.xtr



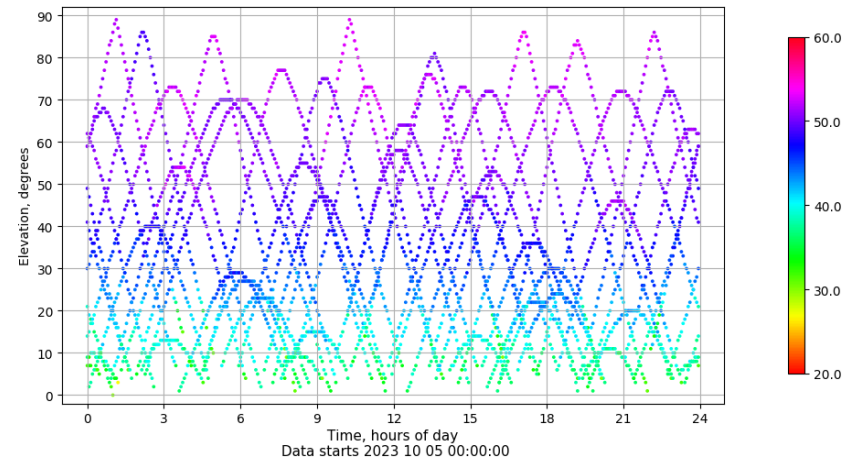
## Azimuth-Elevacion

Azimuth-elevation plot for station IGNE. Signal to Noise S1C Data file IGNE00ESP\_R\_2023278.xtr



## Tiempo-Elevacion

Time-elevation plot for station IGNE. Signal to Noise S1C Data file IGNE00ESP\_R\_2023278.xtr

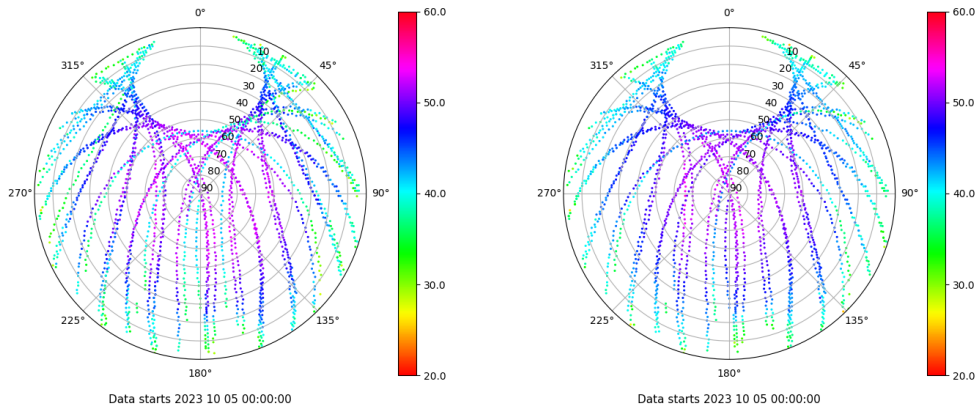


# Control de calidad GNSS GLO diario

Estacion: IGNE  
 Fecha: 2023 10 05  
 Dia del año: 278

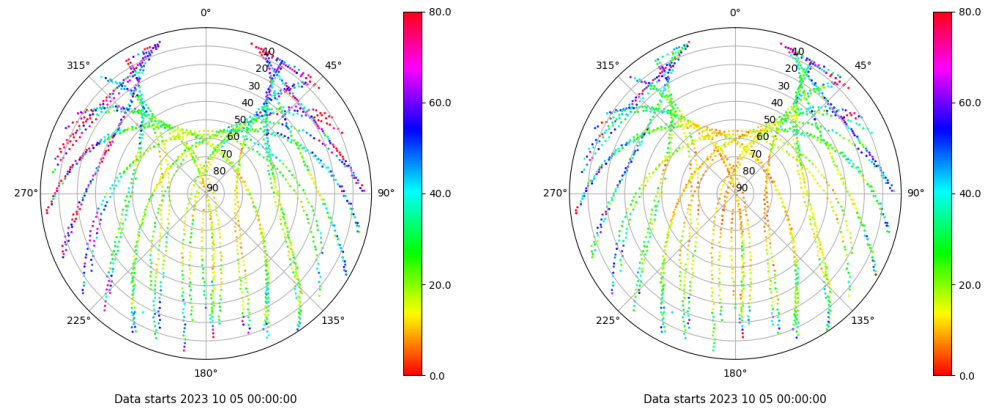
## Señal-Ruido GLO L1 y L2

Skyplot for station IGNE. Signal to Noise S1C Data file IGNE00ESP\_R\_2023278.xtr Skyplot for station IGNE. Signal to Noise S2C Data file IGNE00ESP\_R\_2023278.xtr



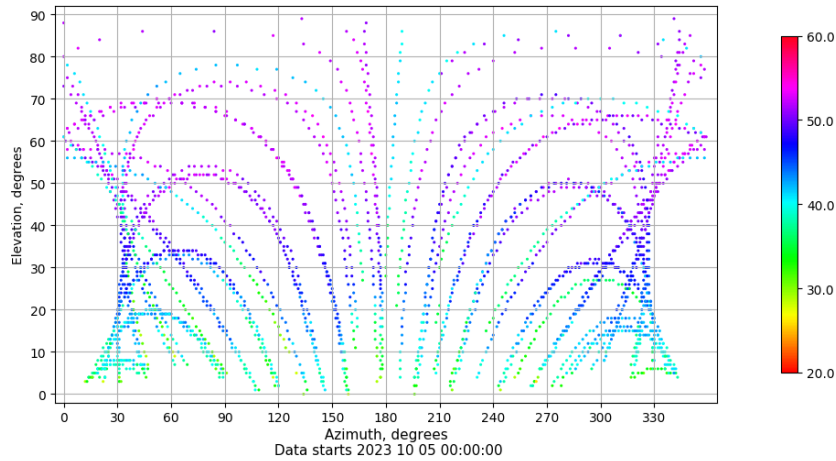
## Multipath GLO L1 y L2

Skyplot for station IGNE. Parameter M1C Data file IGNE00ESP\_R\_2023278.xtr Skyplot for station IGNE. Parameter M2C Data file IGNE00ESP\_R\_2023278.xtr



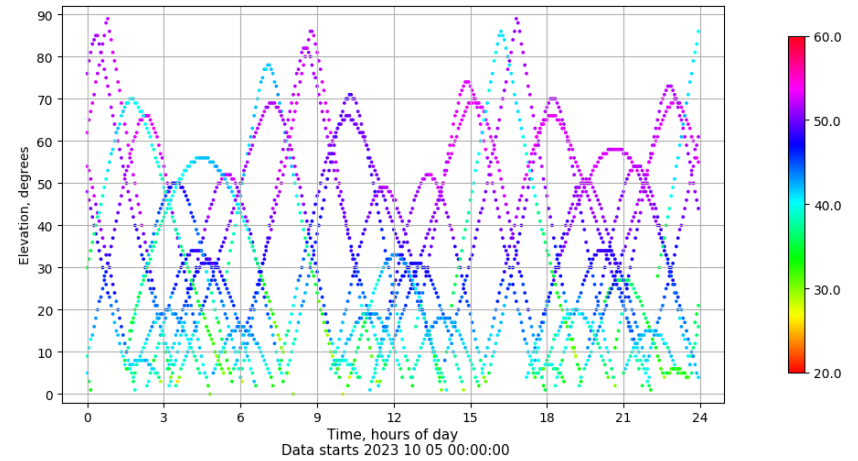
## Azimuth-Elevacion

Azimuth-elevation plot for station IGNE. Signal to Noise S1C Data file IGNE00ESP\_R\_2023278.xtr



## Tiempo-Elevacion

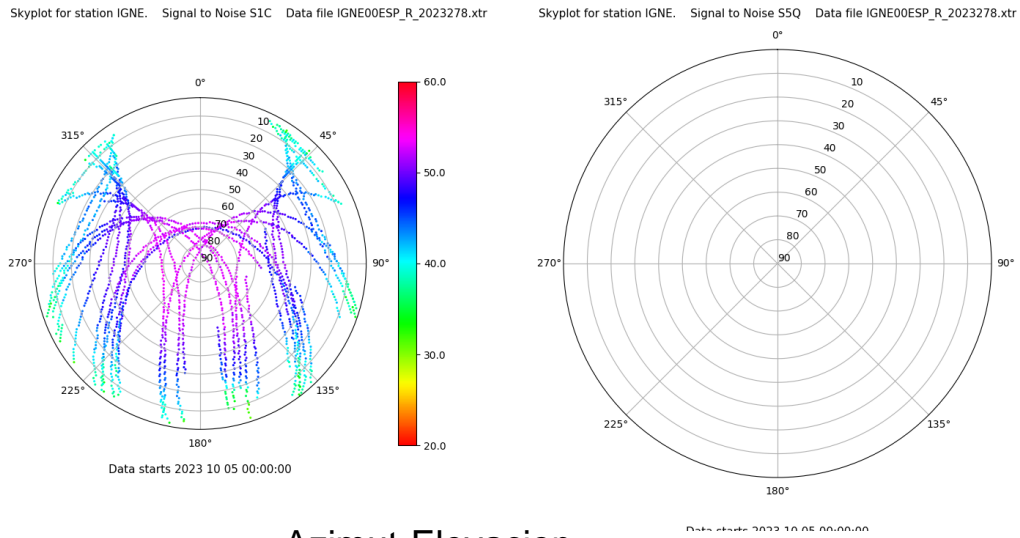
Time-elevation plot for station IGNE. Signal to Noise S1C Data file IGNE00ESP\_R\_2023278.xtr



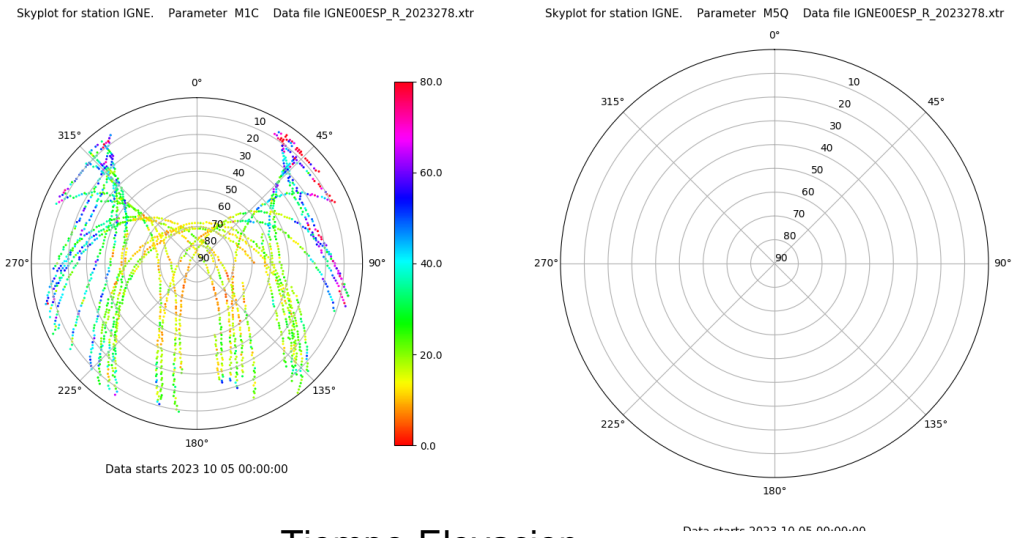
# Control de calidad GNSS GAL diario

Estacion: IGNE  
 Fecha: 2023 10 05  
 Dia del año: 278

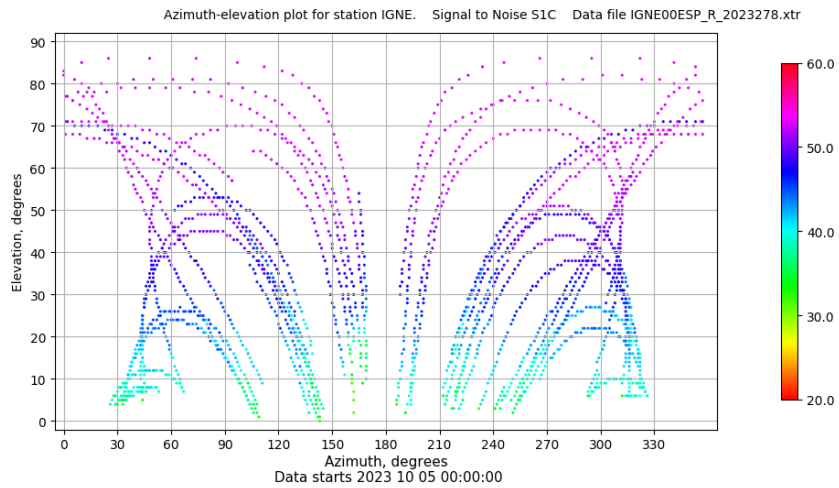
## Señal-Ruido GAL E1 y E5



## Multipath GAL E1 y E5



## Azimuth-Elevacion



## Tiempo-Elevacion

