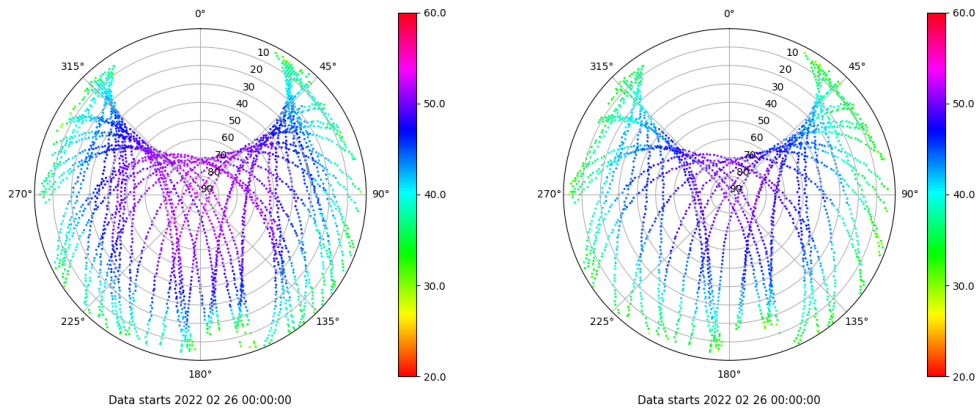


Control de calidad GNSS GPS diario

Estacion: IGNE
 Fecha: 2022 02 26
 Dia del año: 057

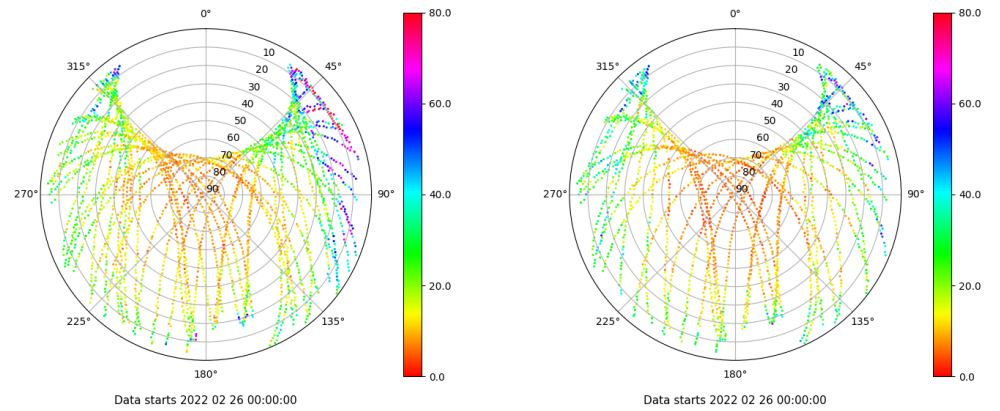
Señal-Ruido GPS L1 y L2

Skyplot for station IGNE. Signal to Noise S1C Data file IGNE00ESP_R_2022057.xtr Skyplot for station IGNE. Signal to Noise S2S Data file IGNE00ESP_R_2022057.xtr



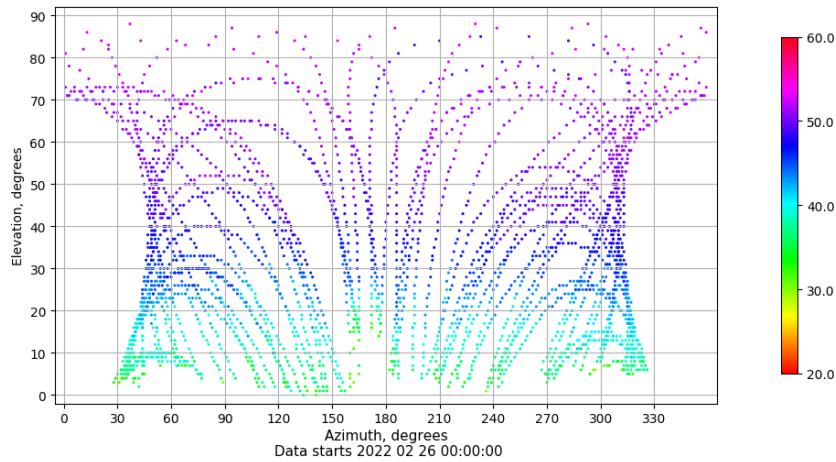
Multipath GPS L1 y L2

Skyplot for station IGNE. Parameter M1C Data file IGNE00ESP_R_2022057.xtr Skyplot for station IGNE. Parameter M2S Data file IGNE00ESP_R_2022057.xtr



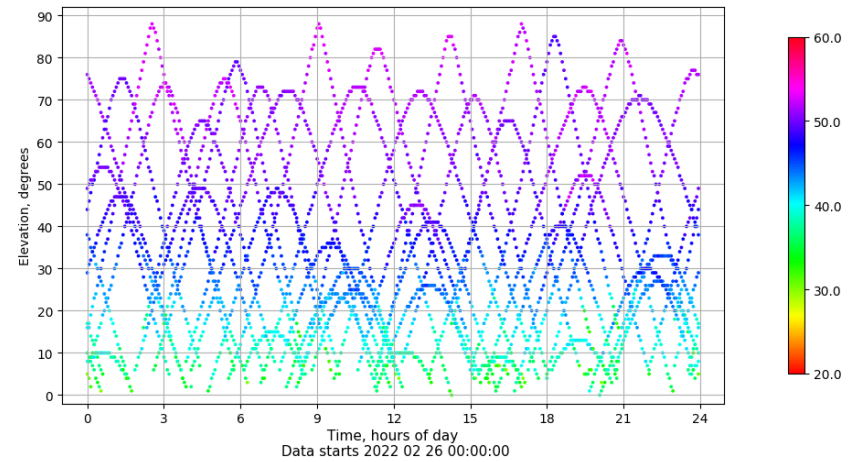
Azimut-Elevacion

Azimuth-elevation plot for station IGNE. Signal to Noise S1C Data file IGNE00ESP_R_2022057.xtr



Tiempo-Elevacion

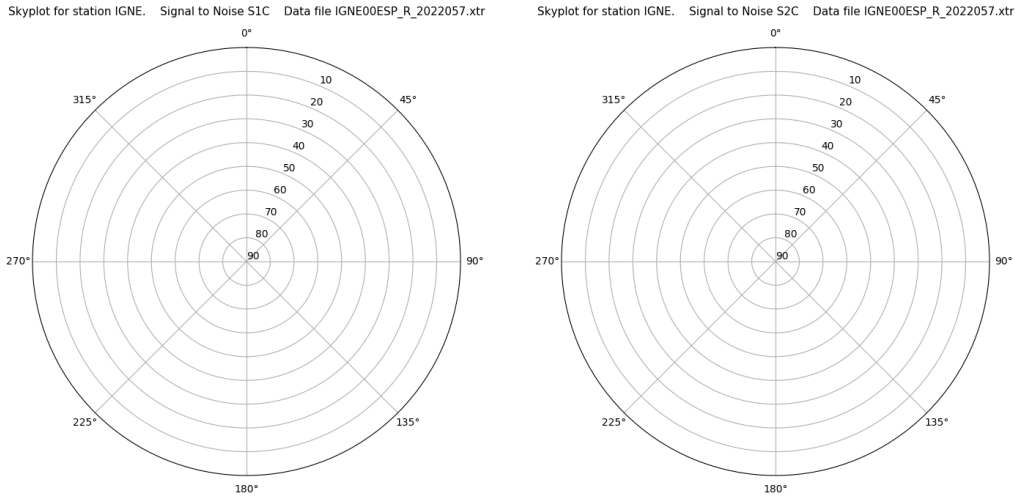
Time-elevation plot for station IGNE. Signal to Noise S1C Data file IGNE00ESP_R_2022057.xtr



Control de calidad GNSS GLO diario

Estacion: IGNE
 Fecha: 2022 02 26
 Dia del año: 057

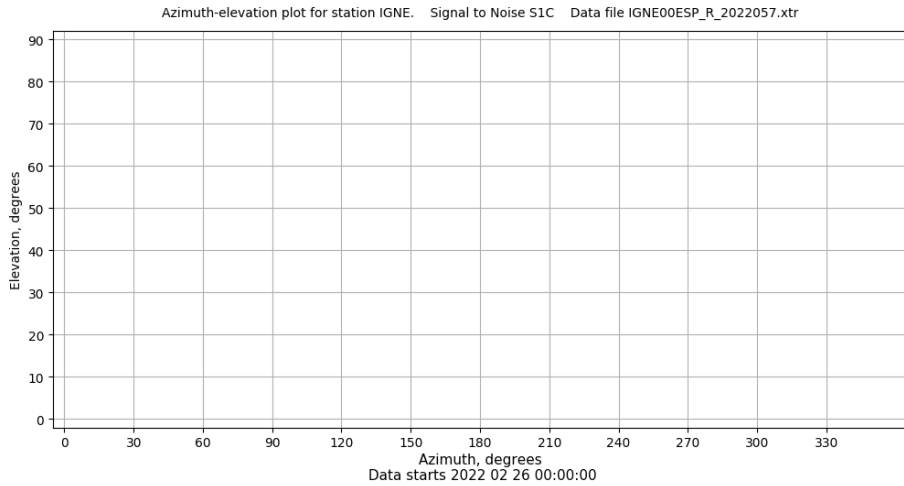
Señal-Ruido GLO L1 y L2



Data starts 2022 02 26 00:00:00

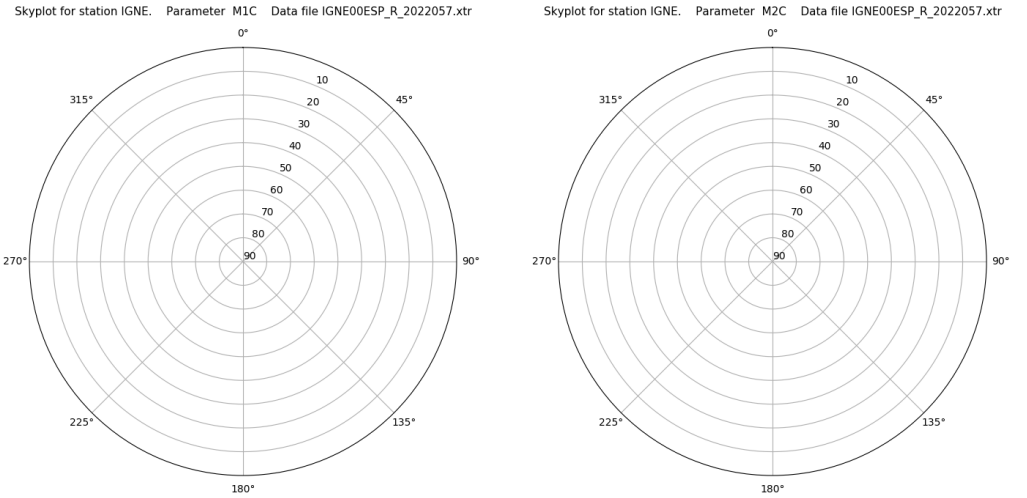
Data starts 2022 02 26 00:00:00

Azimut-Elevacion



Data starts 2022 02 26 00:00:00

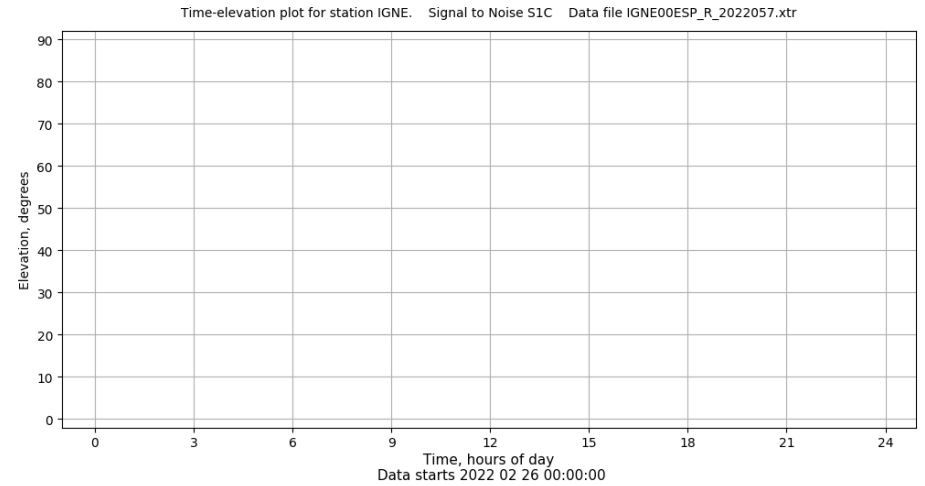
Multipath GLO L1 y L2



Data starts 2022 02 26 00:00:00

Data starts 2022 02 26 00:00:00

Tiempo-Elevacion



Data starts 2022 02 26 00:00:00

Control de calidad GNSS GAL diario

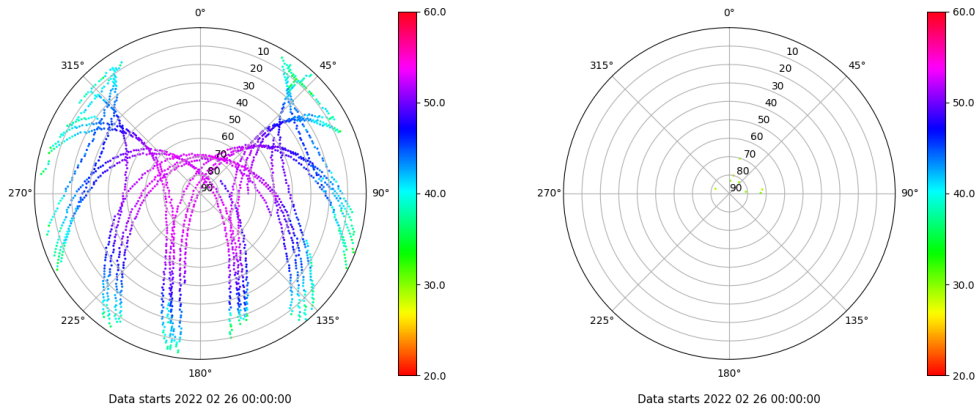
Estacion: IGNE

Fecha: 2022 02 26

Dia del año: 057

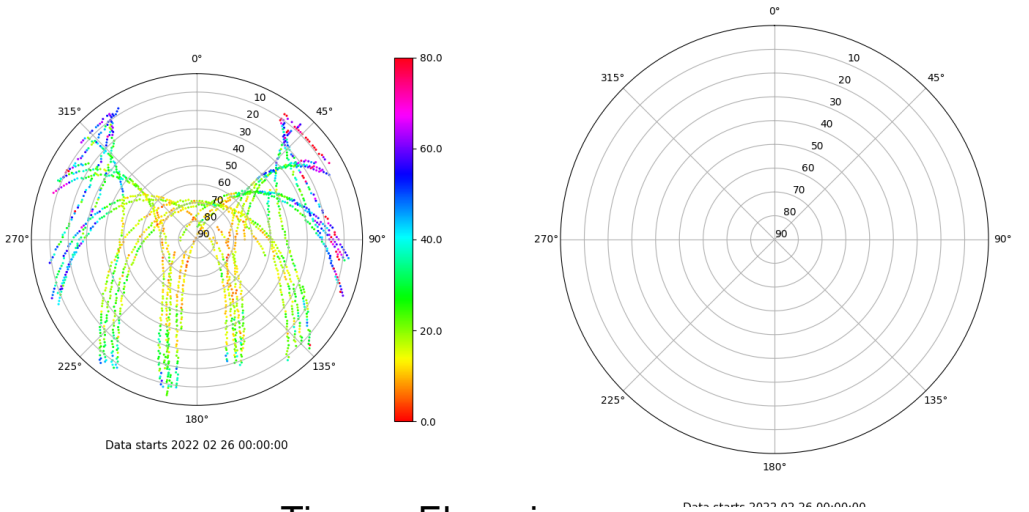
Señal-Ruido GAL E1 y E5

Skyplot for station IGNE. Signal to Noise S1C Data file IGNE00ESP_R_2022057.xtr Skyplot for station IGNE. Signal to Noise S5Q Data file IGNE00ESP_R_2022057.xtr



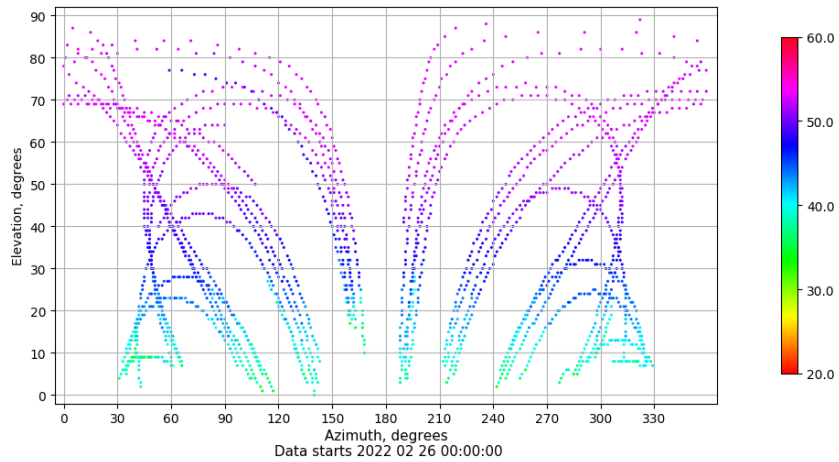
Multipath GAL E1 y E5

Skyplot for station IGNE. Parameter M1C Data file IGNE00ESP_R_2022057.xtr Skyplot for station IGNE. Parameter M5Q Data file IGNE00ESP_R_2022057.xtr



Azimuth-Elevacion

Azimuth-elevation plot for station IGNE. Signal to Noise S1C Data file IGNE00ESP_R_2022057.xtr



Tiempo-Elevacion

Time-elevation plot for station IGNE. Signal to Noise S1C Data file IGNE00ESP_R_2022057.xtr

