

Control de calidad GNSS GPS diario

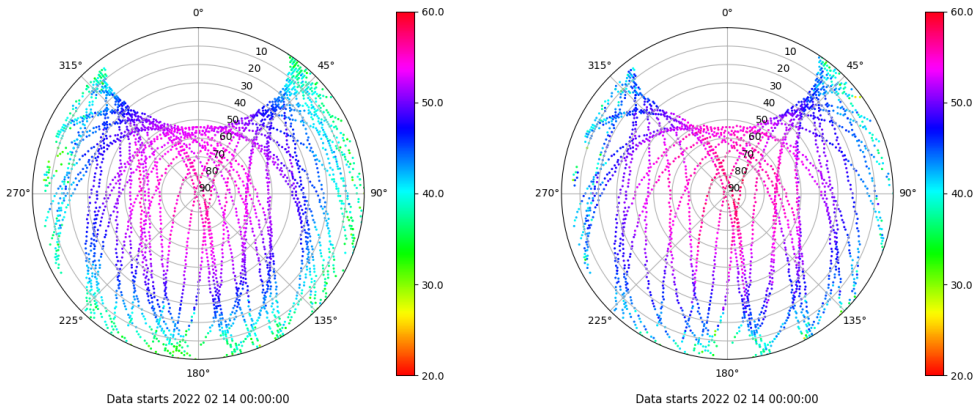
Estacion: GOME

Fecha: 2022 02 14

Dia del año: 045

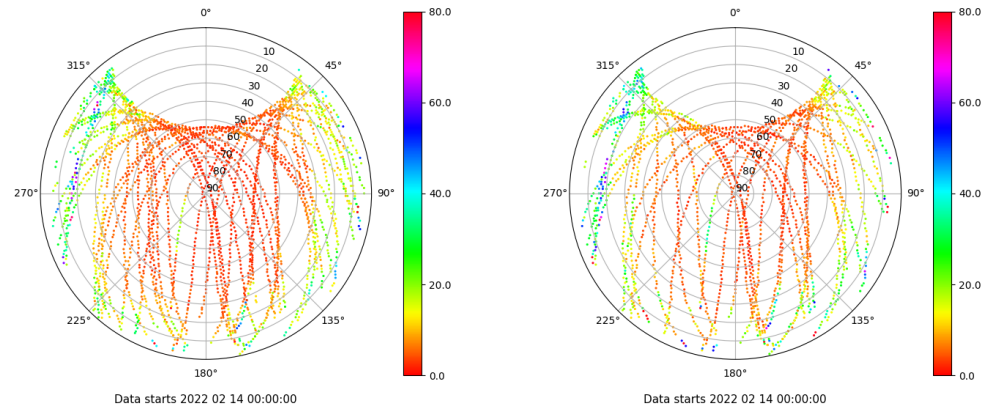
Señal-Ruido GPS L1 y L2

Skyplot for station GOME. Signal to Noise S1C Data file GOME00ESP_R_2022045.xtr Skyplot for station GOME. Signal to Noise S2S Data file GOME00ESP_R_2022045.xtr



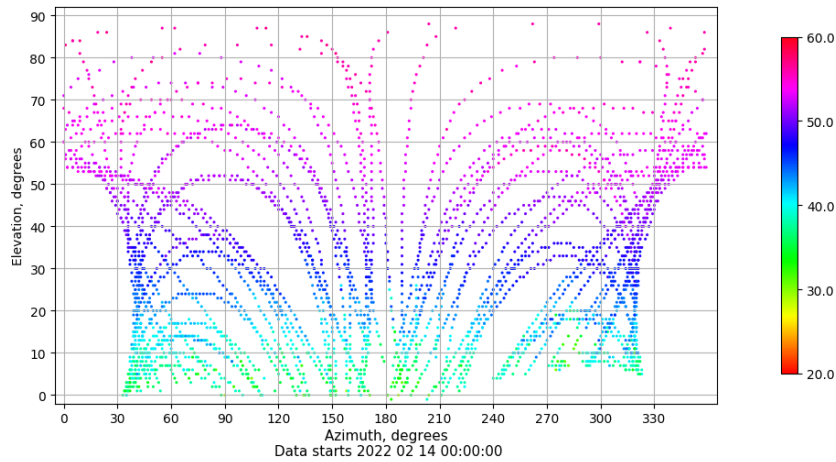
Multipath GPS L1 y L2

Skyplot for station GOME. Parameter M1C Data file GOME00ESP_R_2022045.xtr Skyplot for station GOME. Parameter M2S Data file GOME00ESP_R_2022045.xtr



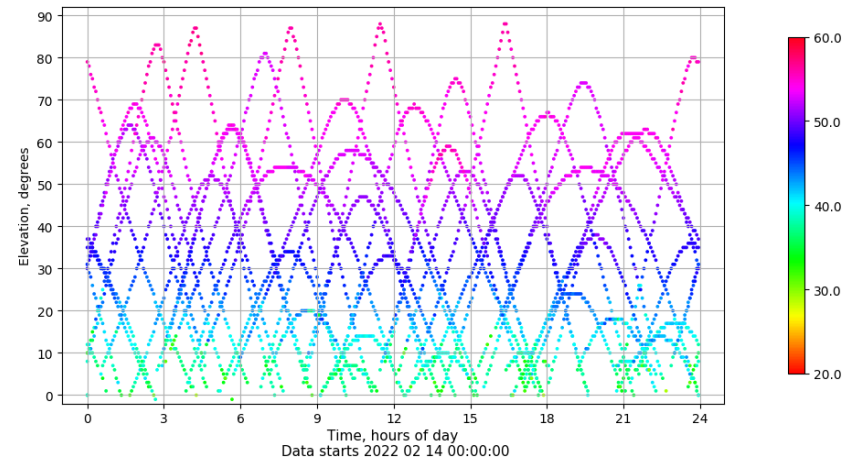
Azimuth-Elevacion

Azimuth-elevation plot for station GOME. Signal to Noise S1C Data file GOME00ESP_R_2022045.xtr



Tiempo-Elevacion

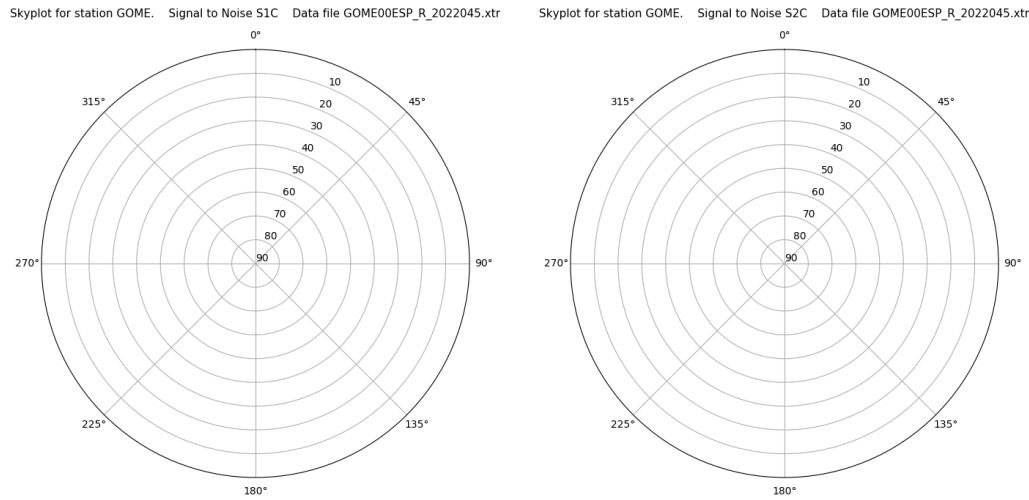
Time-elevation plot for station GOME. Signal to Noise S1C Data file GOME00ESP_R_2022045.xtr



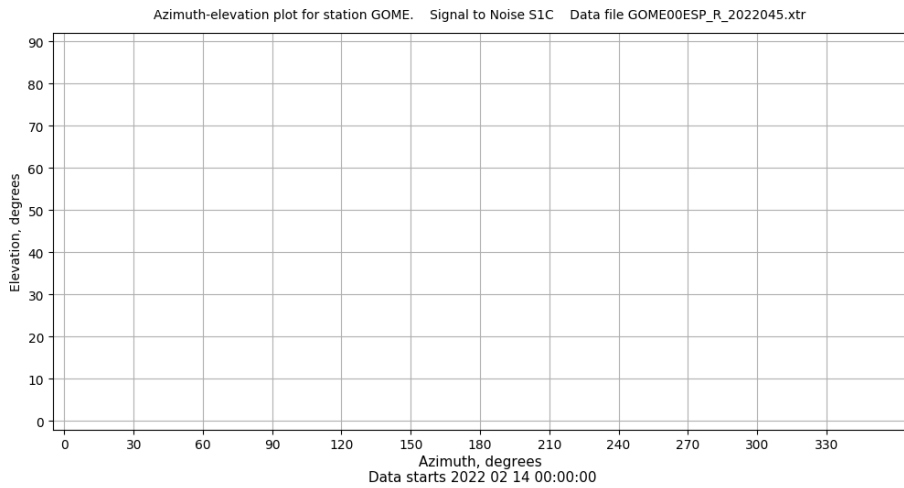
Control de calidad GNSS GLO diario

Estacion: GOME
 Fecha: 2022 02 14
 Dia del año: 045

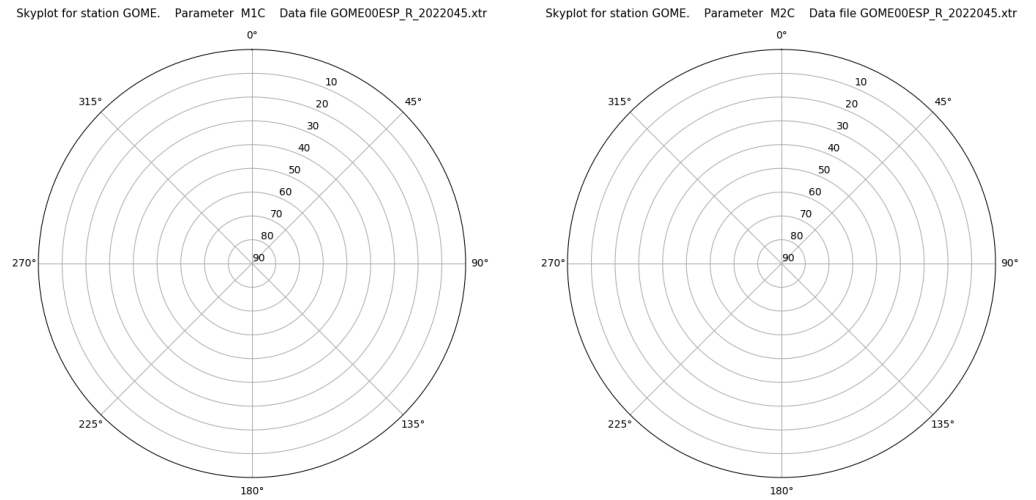
Señal-Ruido GLO L1 y L2



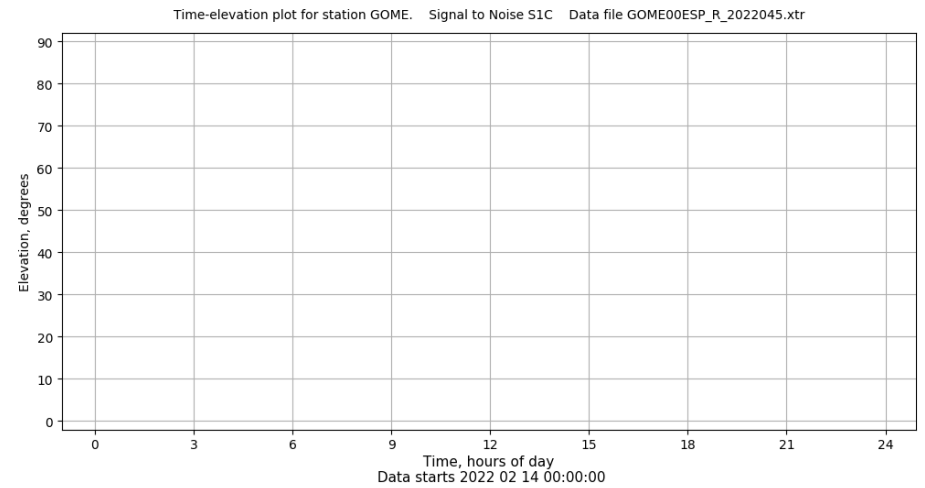
Azimut-Elevacion



Multipath GLO L1 y L2



Tiempo-Elevacion



Control de calidad GNSS GAL diario

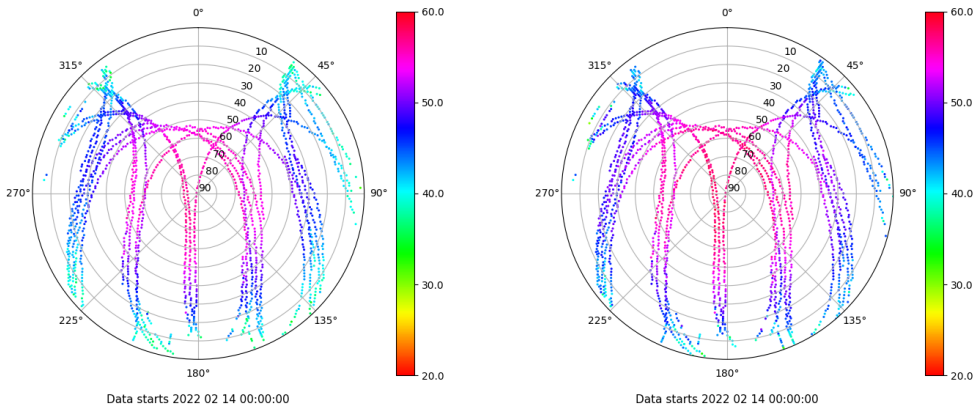
Estacion: GOME

Fecha: 2022 02 14

Dia del año: 045

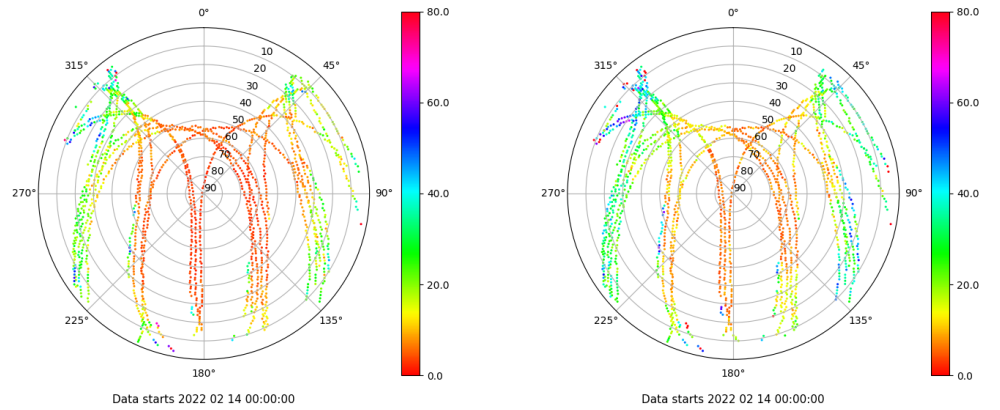
Señal-Ruido GAL E1 y E5

Skyplot for station GOME. Signal to Noise S1C Data file GOME00ESP_R_2022045.xtr Skyplot for station GOME. Signal to Noise S5Q Data file GOME00ESP_R_2022045.xtr



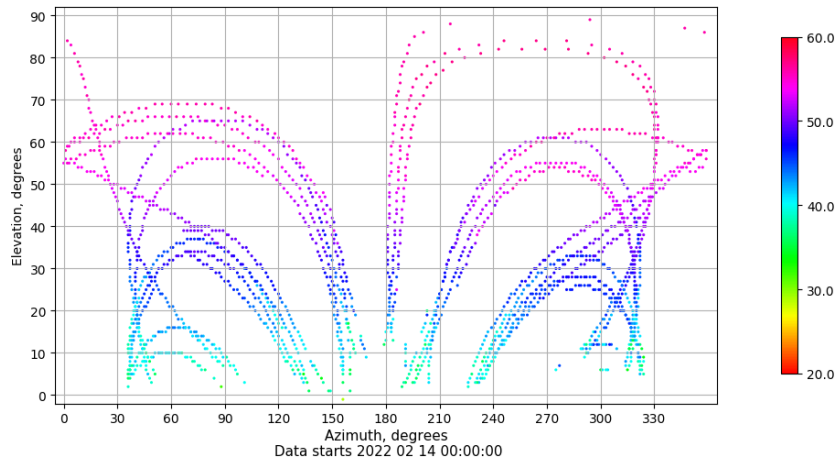
Multipath GAL E1 y E5

Skyplot for station GOME. Parameter M1C Data file GOME00ESP_R_2022045.xtr Skyplot for station GOME. Parameter M5Q Data file GOME00ESP_R_2022045.xtr



Azimuth-Elevacion

Azimuth-elevation plot for station GOME. Signal to Noise S1C Data file GOME00ESP_R_2022045.xtr



Tiempo-Elevacion

Time-elevation plot for station GOME. Signal to Noise S1C Data file GOME00ESP_R_2022045.xtr

