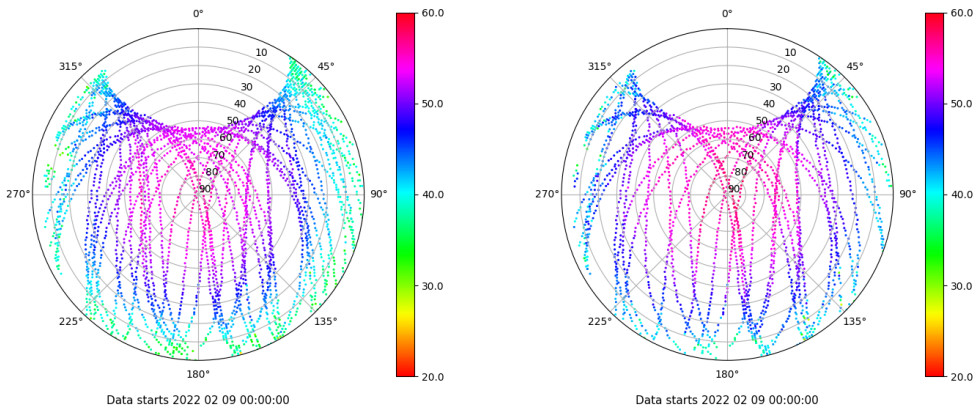


Control de calidad GNSS GPS diario

Estacion: GOME
 Fecha: 2022 02 09
 Dia del año: 040

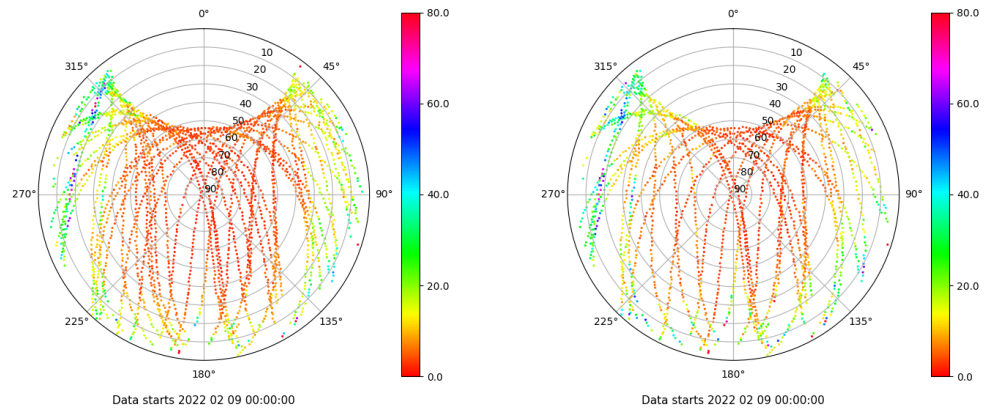
Señal-Ruido GPS L1 y L2

Skyplot for station GOME. Signal to Noise S1C Data file GOME00ESP_R_2022040.xtr Skyplot for station GOME. Signal to Noise S2S Data file GOME00ESP_R_2022040.xtr



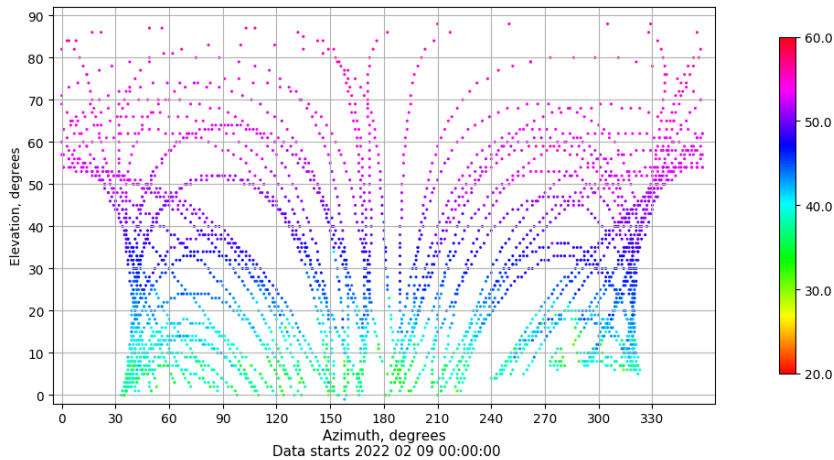
Multipath GPS L1 y L2

Skyplot for station GOME. Parameter M1C Data file GOME00ESP_R_2022040.xtr Skyplot for station GOME. Parameter M2S Data file GOME00ESP_R_2022040.xtr



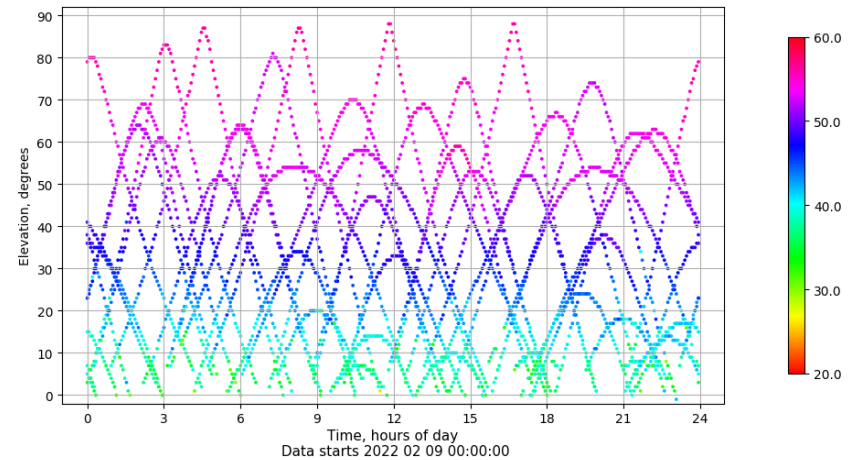
Azimuth-Elevacion

Azimuth-elevation plot for station GOME. Signal to Noise S1C Data file GOME00ESP_R_2022040.xtr



Tiempo-Elevacion

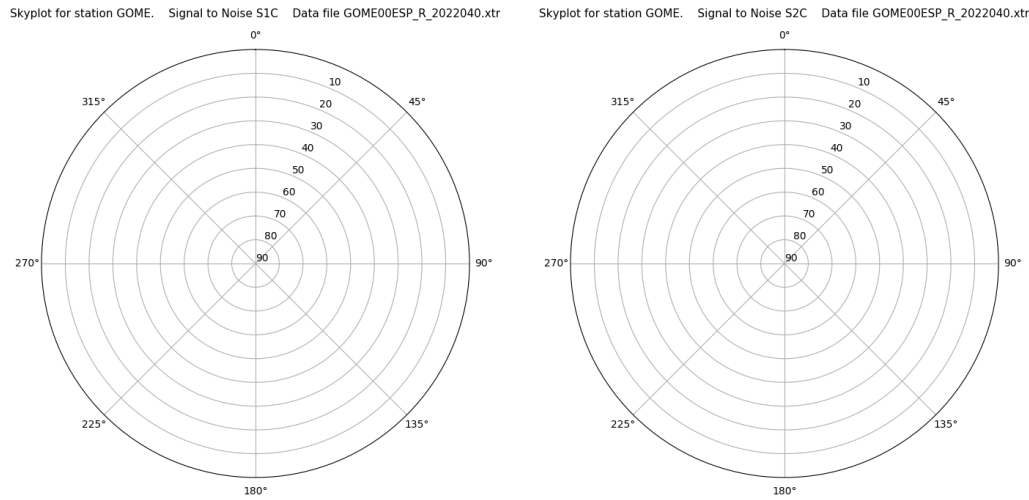
Time-elevation plot for station GOME. Signal to Noise S1C Data file GOME00ESP_R_2022040.xtr



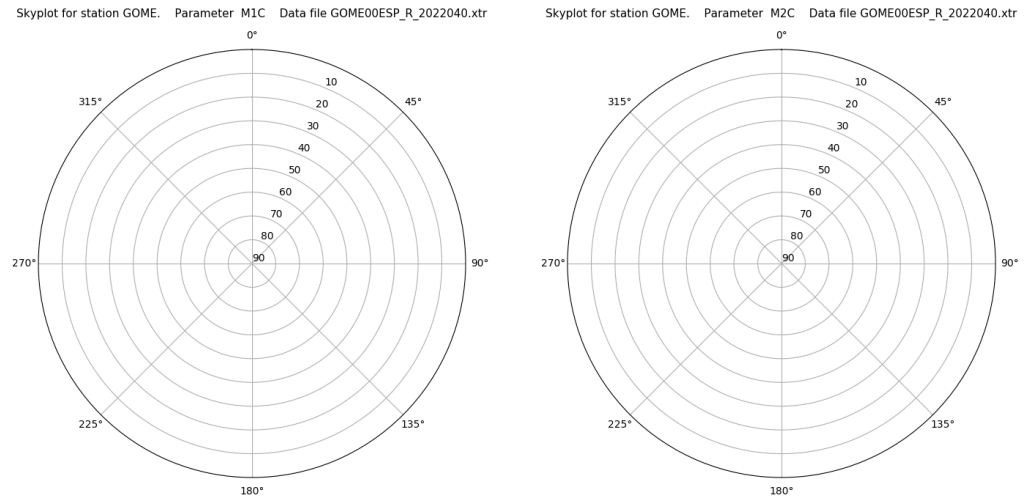
Control de calidad GNSS GLO diario

Estacion: GOME
 Fecha: 2022 02 09
 Dia del año: 040

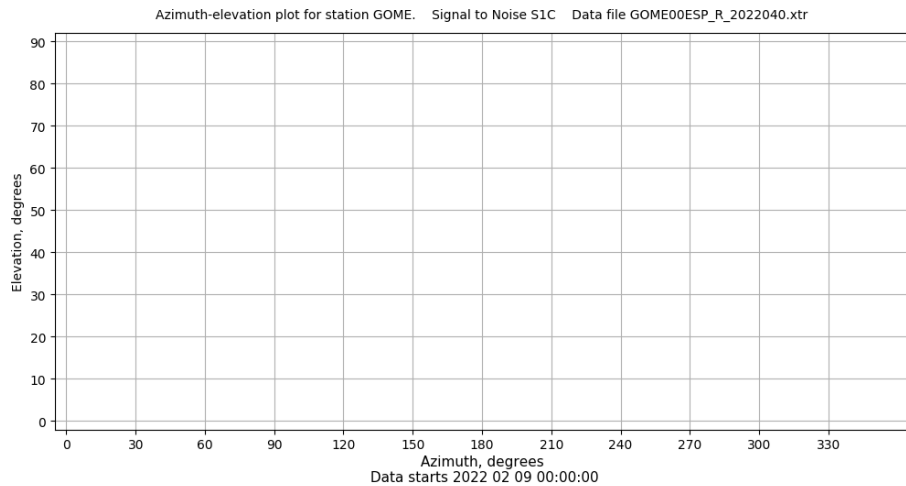
Señal-Ruido GLO L1 y L2



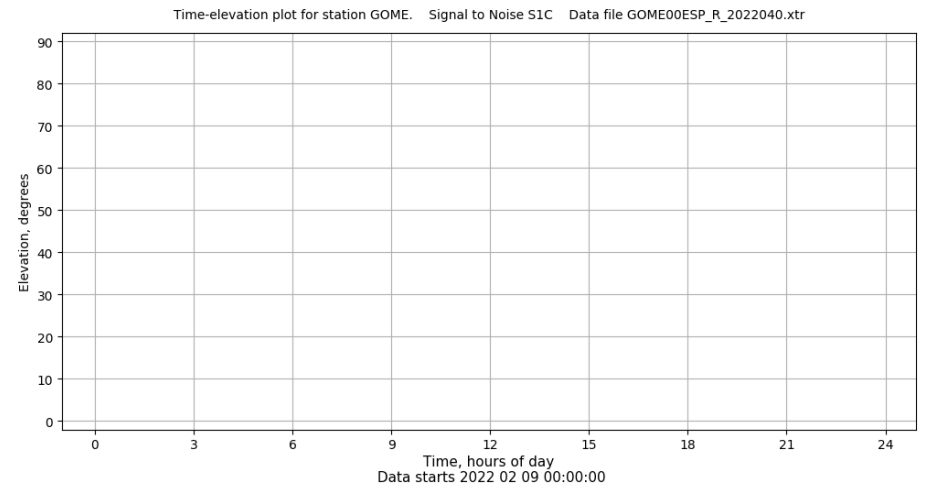
Multipath GLO L1 y L2



Azimut-Elevacion



Tiempo-Elevacion



Control de calidad GNSS GAL diario

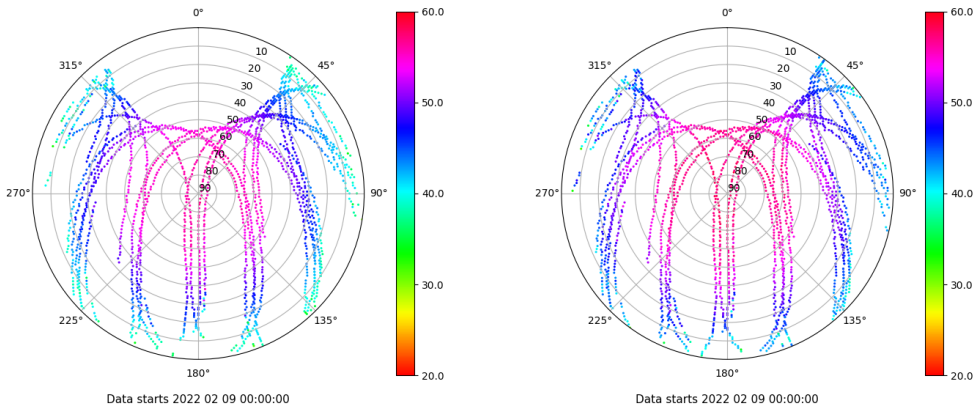
Estacion: GOME

Fecha: 2022 02 09

Dia del año: 040

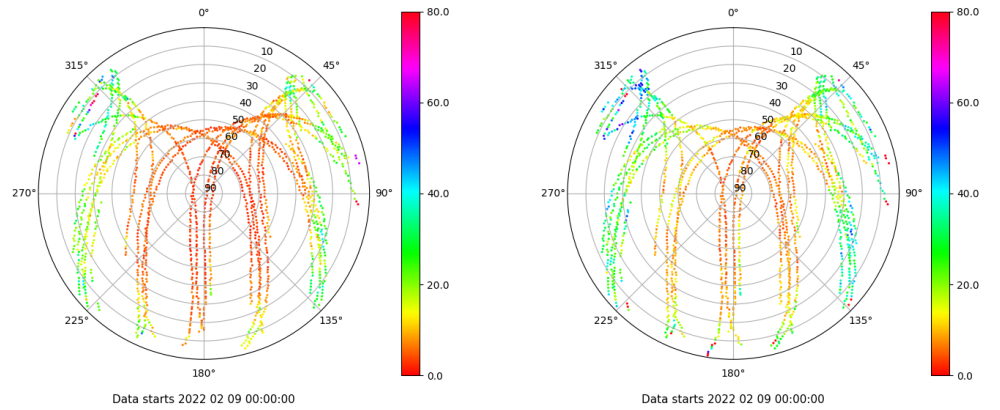
Señal-Ruido GAL E1 y E5

Skyplot for station GOME. Signal to Noise S1C Data file GOME00ESP_R_2022040.xtr Skyplot for station GOME. Signal to Noise S5Q Data file GOME00ESP_R_2022040.xtr



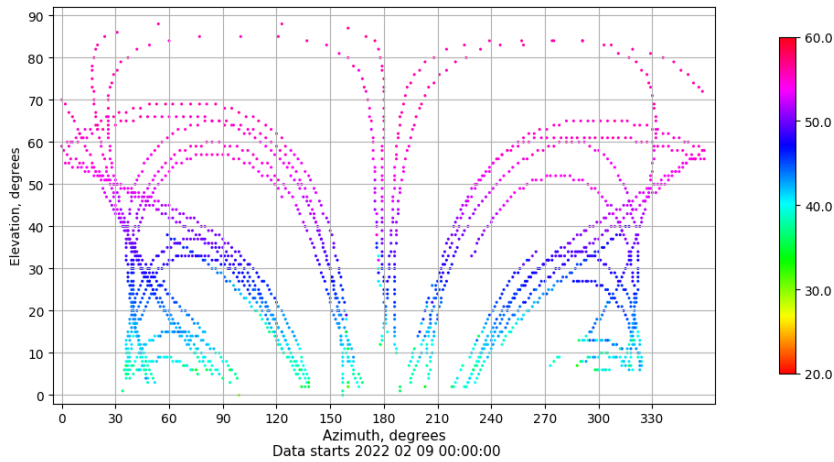
Multipath GAL E1 y E5

Skyplot for station GOME. Parameter M1C Data file GOME00ESP_R_2022040.xtr Skyplot for station GOME. Parameter M5Q Data file GOME00ESP_R_2022040.xtr



Azimuth-Elevacion

Azimuth-elevation plot for station GOME. Signal to Noise S1C Data file GOME00ESP_R_2022040.xtr



Tiempo-Elevacion

Time-elevation plot for station GOME. Signal to Noise S1C Data file GOME00ESP_R_2022040.xtr

