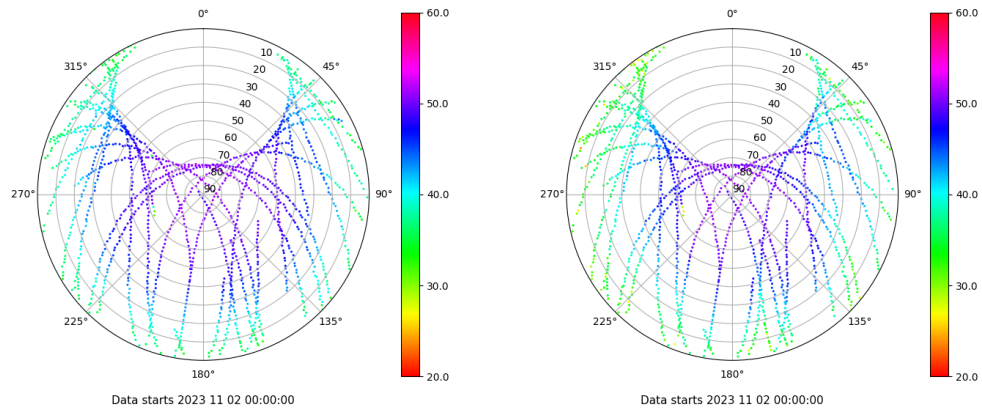


Control de calidad GNSS GPS diario

Estacion: FRRL
 Fecha: 2023 11 02
 Dia del año: 306

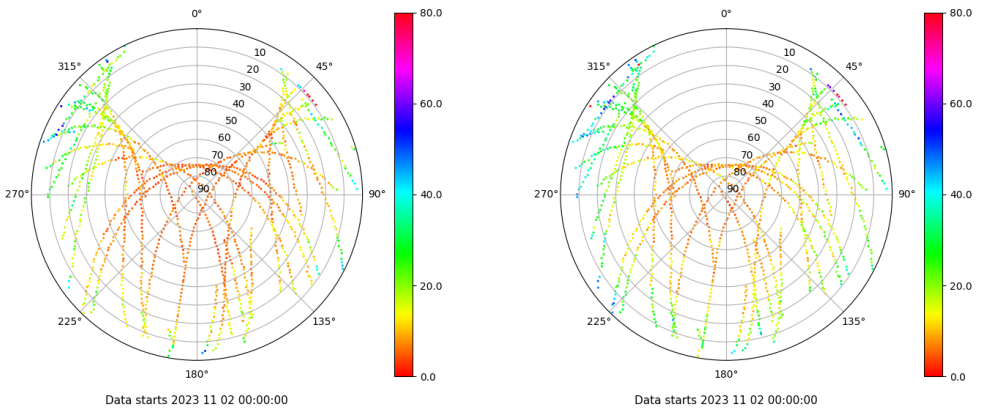
Señal-Ruido GPS L1 y L2

Skyplot for station FRRL. Signal to Noise S1C Data file FRRL00ESP_R_2023306.xtr Skyplot for station FRRL. Signal to Noise S2W Data file FRRL00ESP_R_2023306.xtr



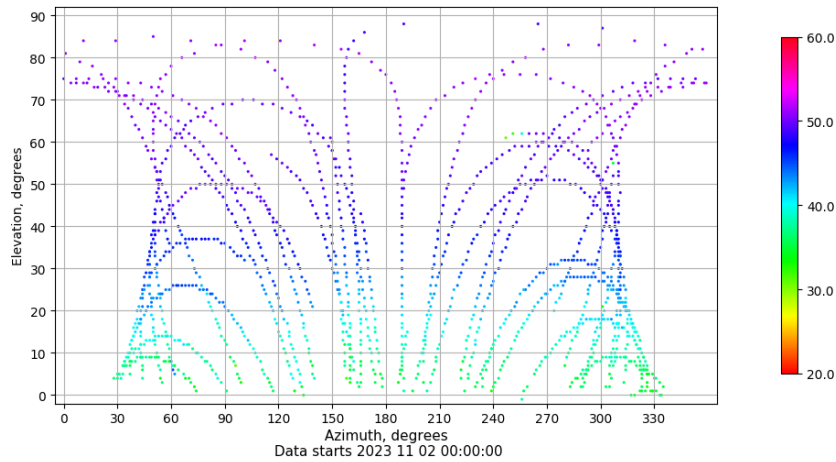
Multipath GPS L1 y L2

Skyplot for station FRRL. Parameter M1C Data file FRRL00ESP_R_2023306.xtr Skyplot for station FRRL. Parameter M2W Data file FRRL00ESP_R_2023306.xtr



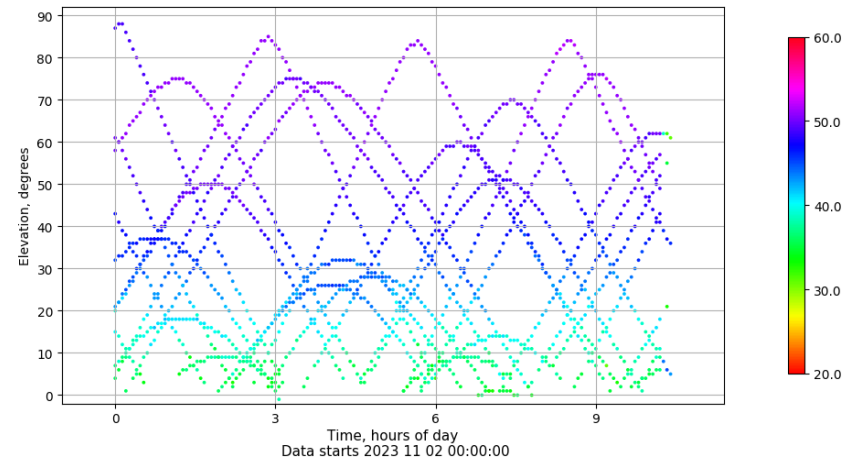
Azimuth-Elevacion

Azimuth-elevation plot for station FRRL. Signal to Noise S1C Data file FRRL00ESP_R_2023306.xtr



Tiempo-Elevacion

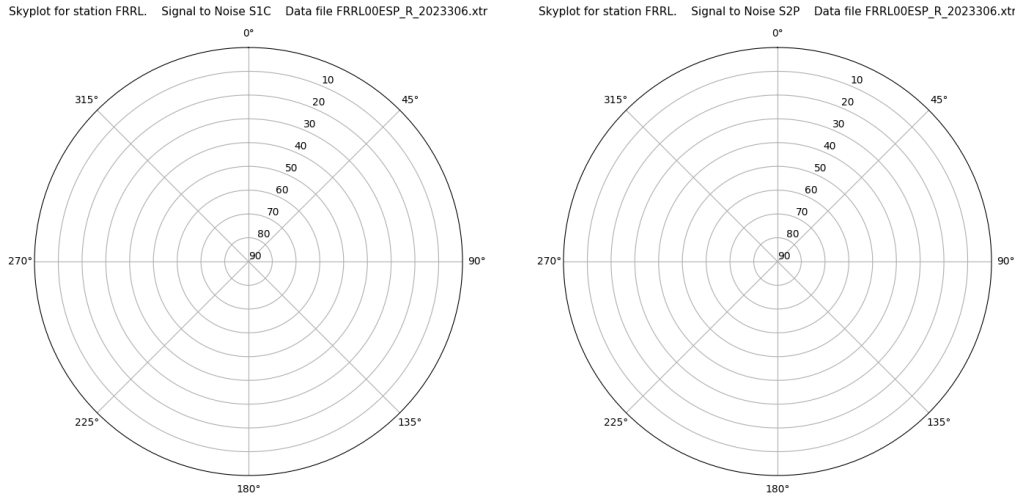
Time-elevation plot for station FRRL. Signal to Noise S1C Data file FRRL00ESP_R_2023306.xtr



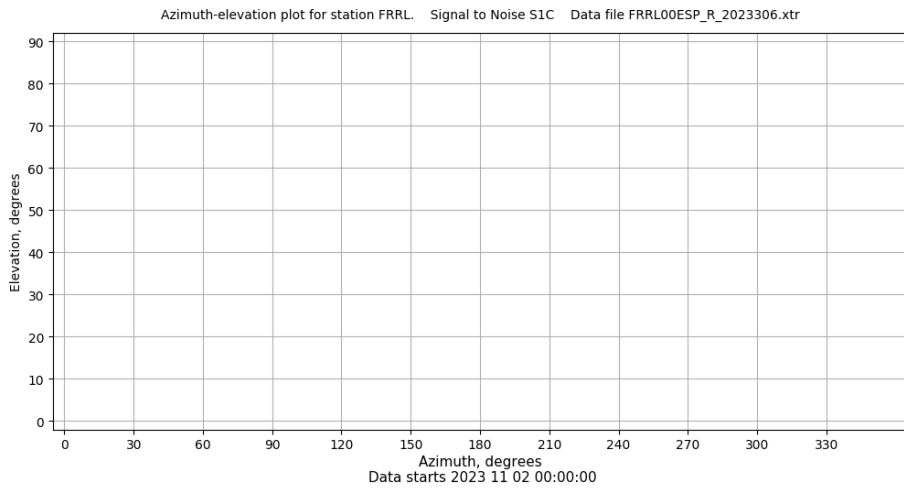
Control de calidad GNSS GLO diario

Estacion: FRRL
 Fecha: 2023 11 02
 Dia del año: 306

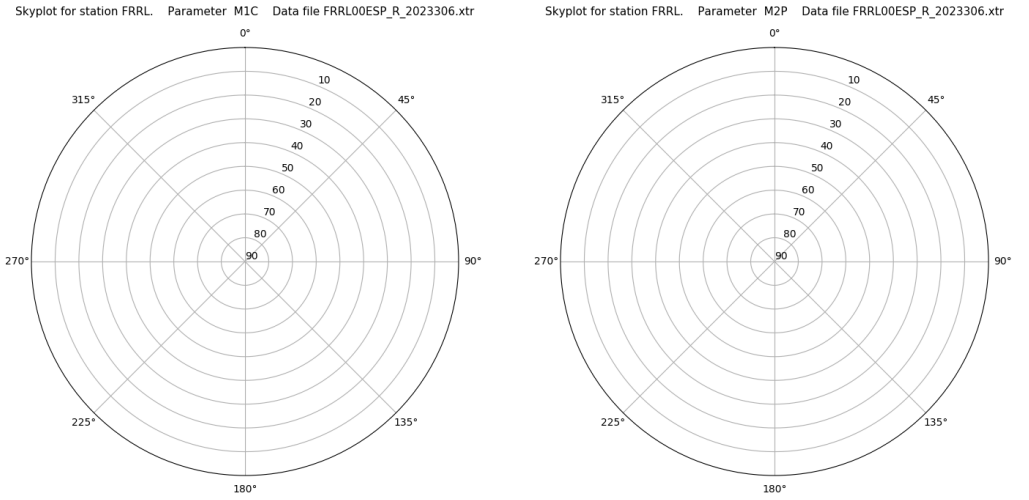
Señal-Ruido GLO L1 y L2



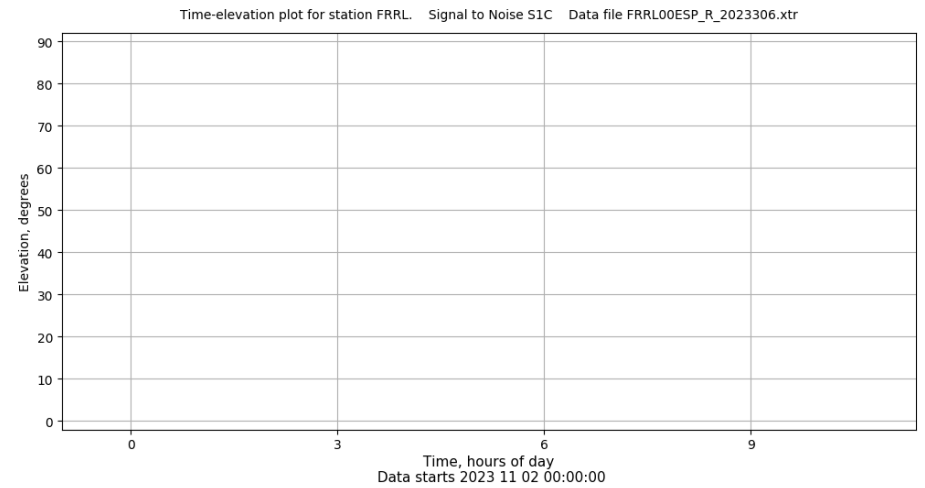
Azimut-Elevacion



Multipath GLO L1 y L2



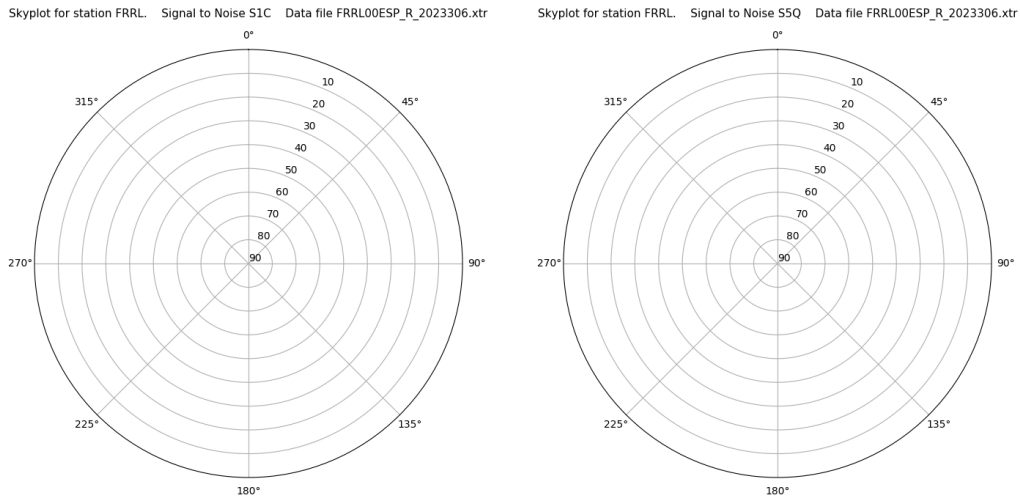
Tiempo-Elevacion



Control de calidad GNSS GAL diario

Estacion: FRRL
 Fecha: 2023 11 02
 Dia del año: 306

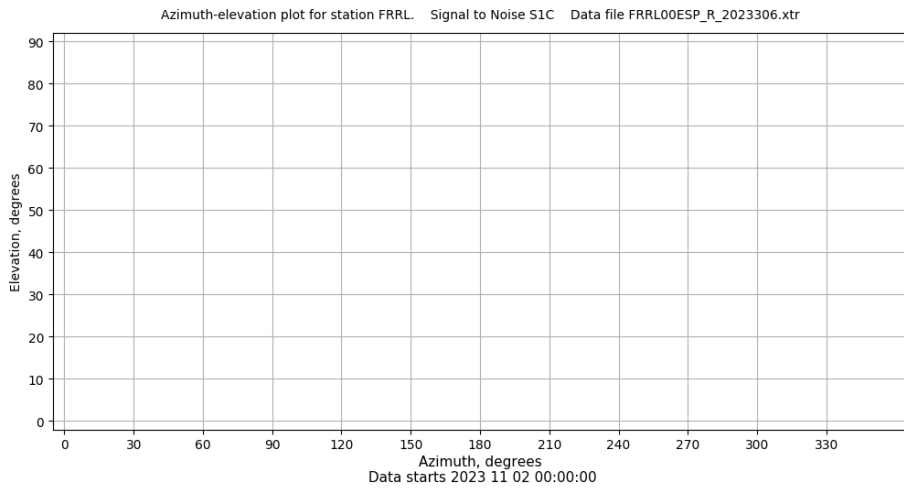
Señal-Ruido GAL E1 y E5



Data starts 2023 11 02 00:00:00

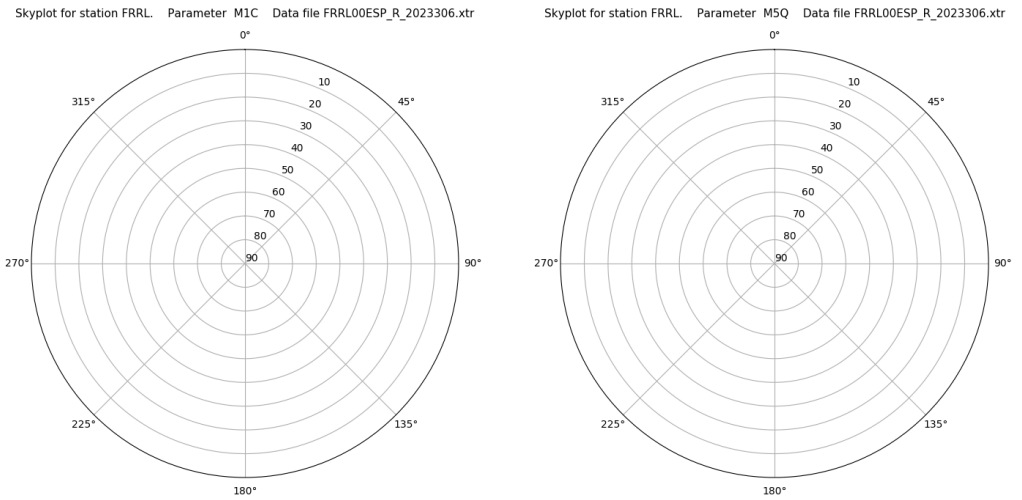
Data starts 2023 11 02 00:00:00

Azimut-Elevacion



Data starts 2023 11 02 00:00:00

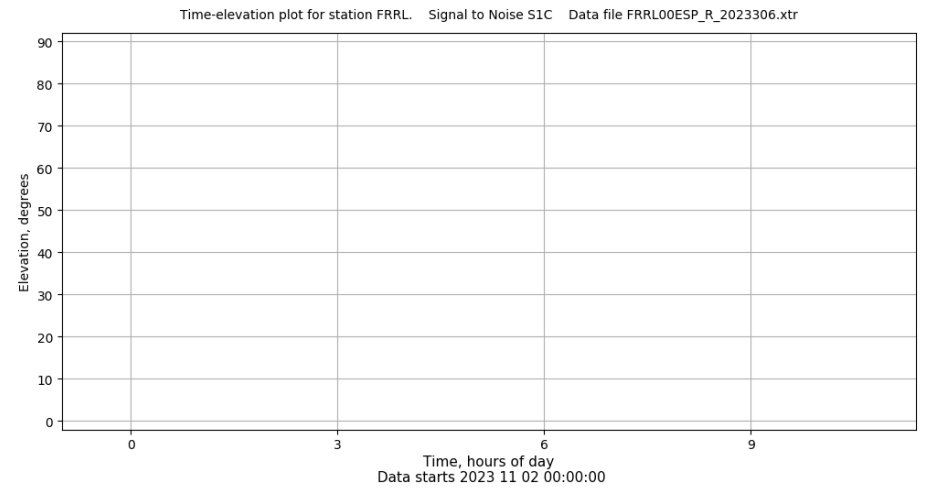
Multipath GAL E1 y E5



Data starts 2023 11 02 00:00:00

Data starts 2023 11 02 00:00:00

Tiempo-Elevacion



Data starts 2023 11 02 00:00:00