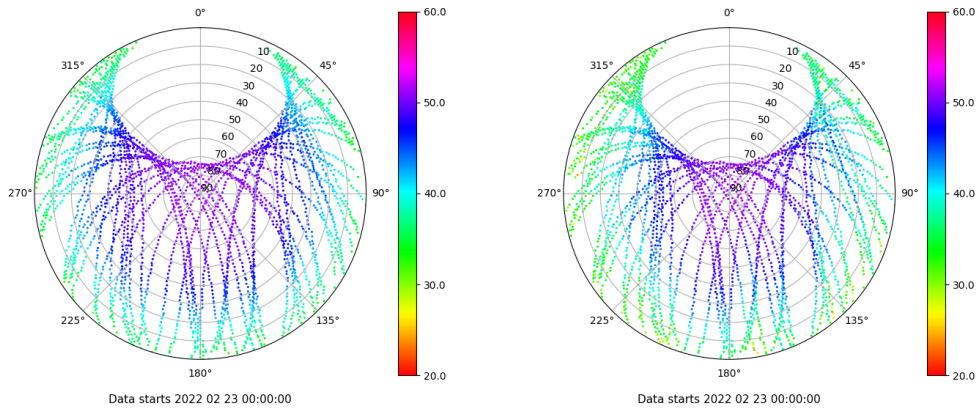


# Control de calidad GNSS GPS diario

Estacion: FRRL  
 Fecha: 2022 02 23  
 Dia del año: 054

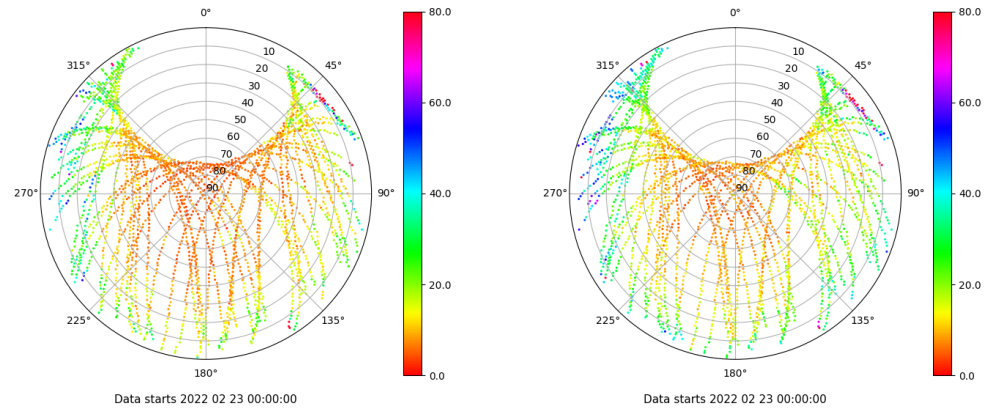
## Señal-Ruido GPS L1 y L2

Skyplot for station FRRL. Signal to Noise S1C Data file FRRL00ESP\_R\_2022054.xtr Skyplot for station FRRL. Signal to Noise S2W Data file FRRL00ESP\_R\_2022054.xtr



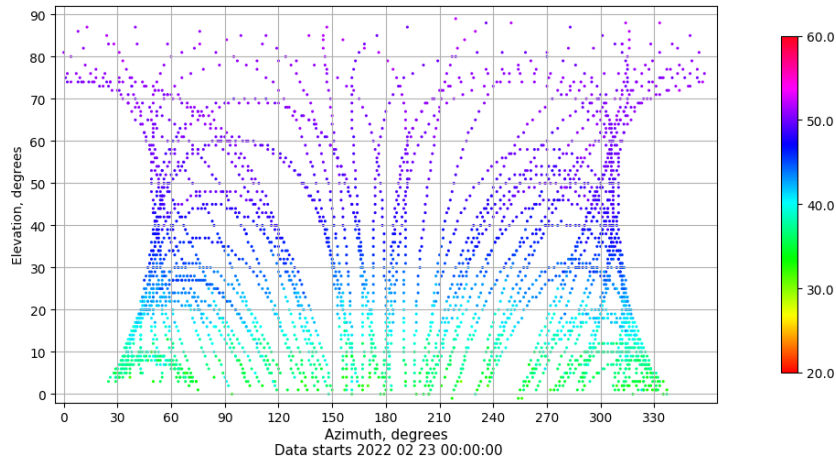
## Multipath GPS L1 y L2

Skyplot for station FRRL. Parameter M1C Data file FRRL00ESP\_R\_2022054.xtr Skyplot for station FRRL. Parameter M2W Data file FRRL00ESP\_R\_2022054.xtr



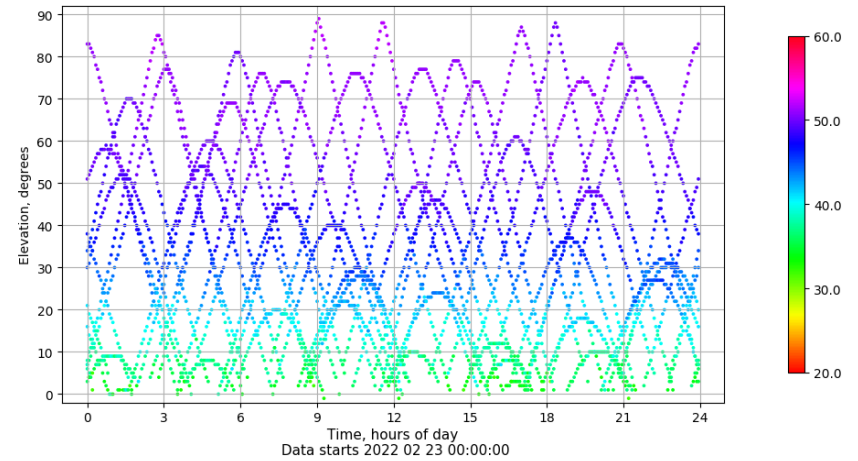
## Azimuth-Elevacion

Azimuth-elevation plot for station FRRL. Signal to Noise S1C Data file FRRL00ESP\_R\_2022054.xtr



## Tiempo-Elevacion

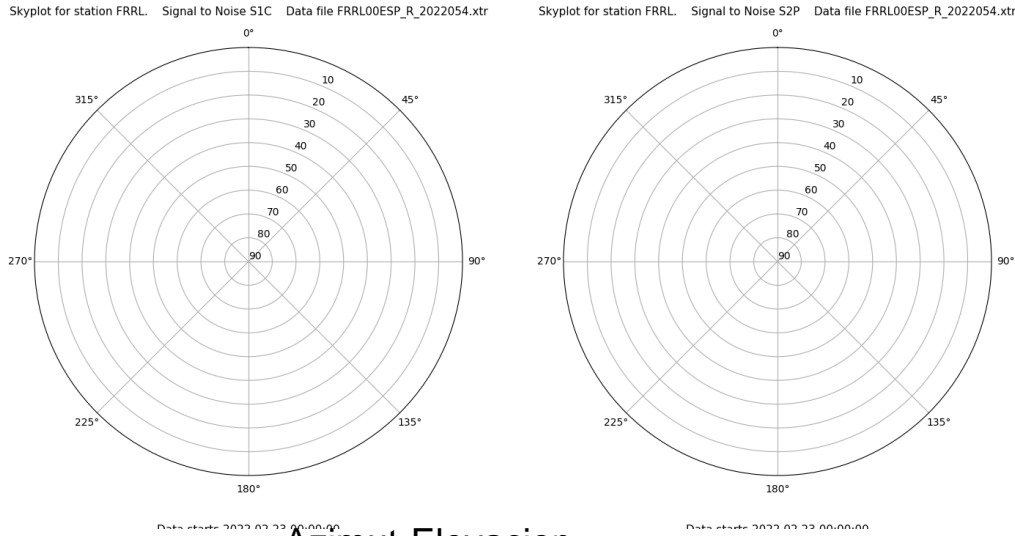
Time-elevation plot for station FRRL. Signal to Noise S1C Data file FRRL00ESP\_R\_2022054.xtr



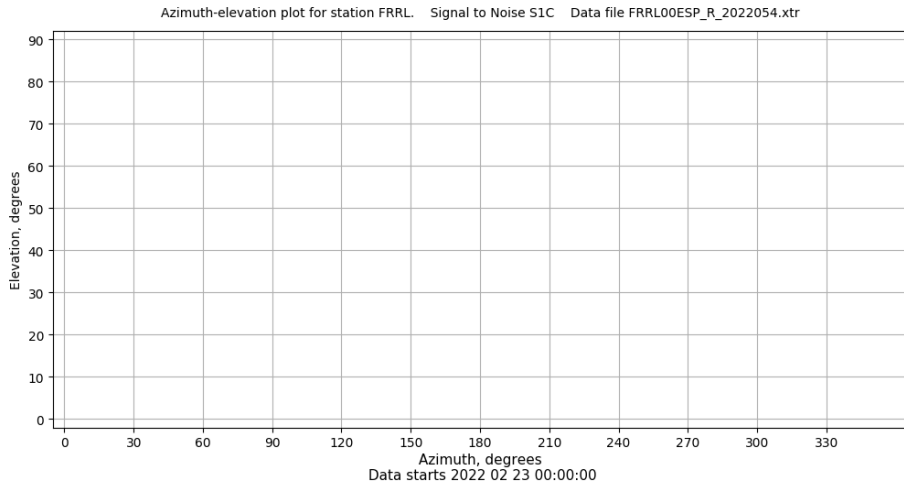
# Control de calidad GNSS GLO diario

Estacion: FRRL  
 Fecha: 2022 02 23  
 Dia del año: 054

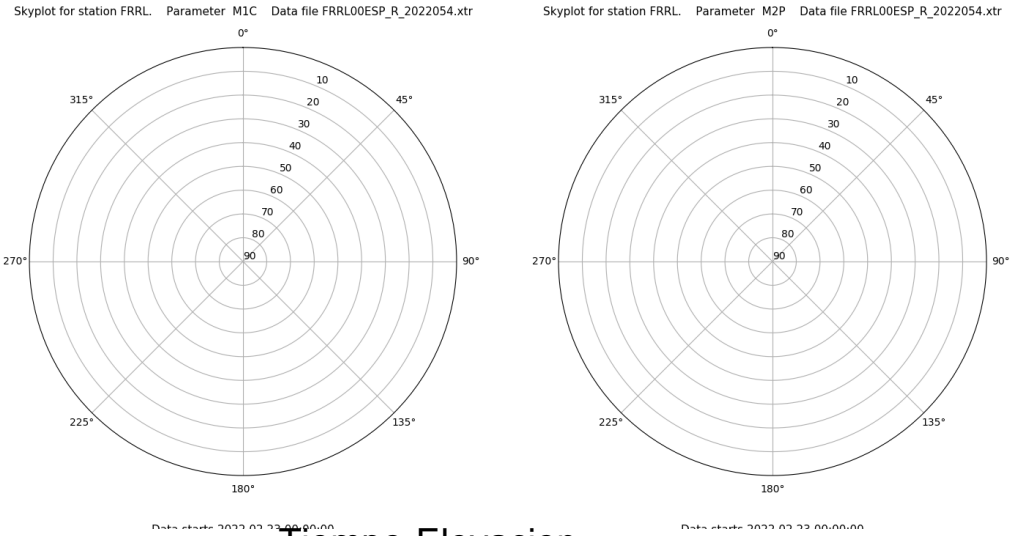
## Señal-Ruido GLO L1 y L2



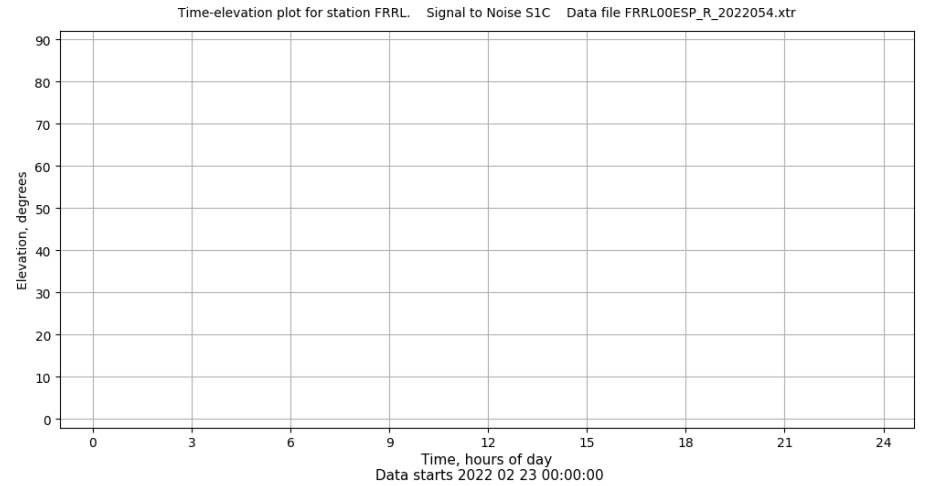
## Azimut-Elevacion



## Multipath GLO L1 y L2



## Tiempo-Elevacion

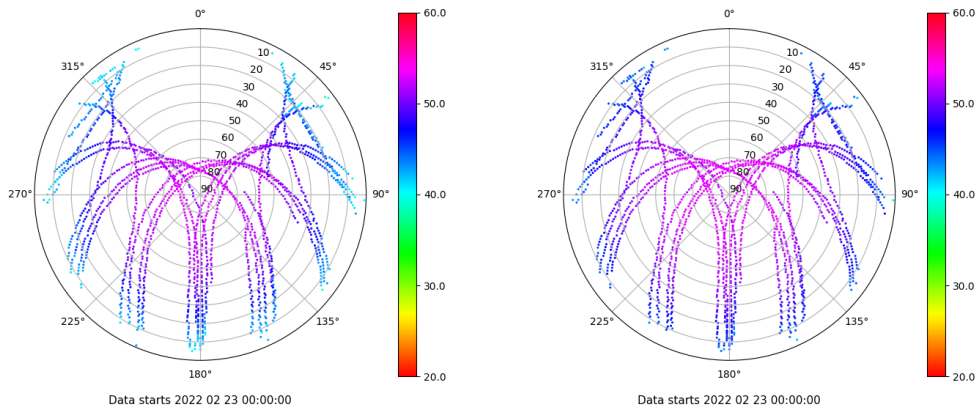


# Control de calidad GNSS GAL diario

Estacion: FRRL  
 Fecha: 2022 02 23  
 Dia del año: 054

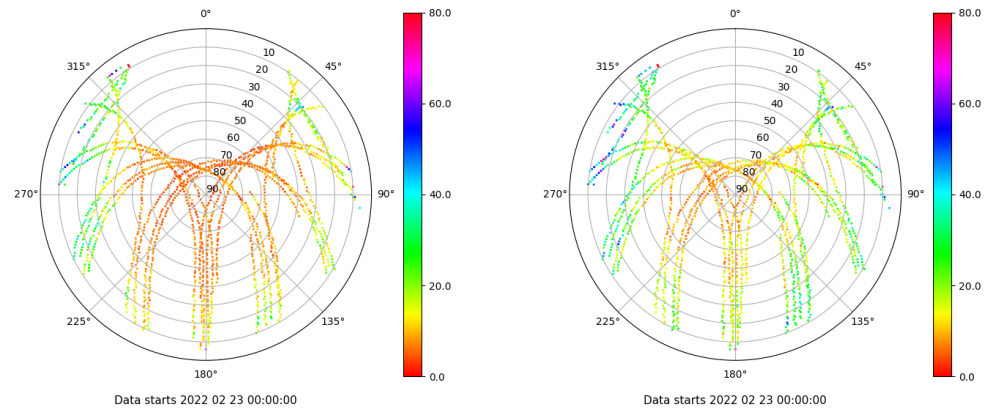
## Señal-Ruido GAL E1 y E5

Skyplot for station FRRL. Signal to Noise S1C Data file FRRL00ESP\_R\_2022054.xtr Skyplot for station FRRL. Signal to Noise S5Q Data file FRRL00ESP\_R\_2022054.xtr



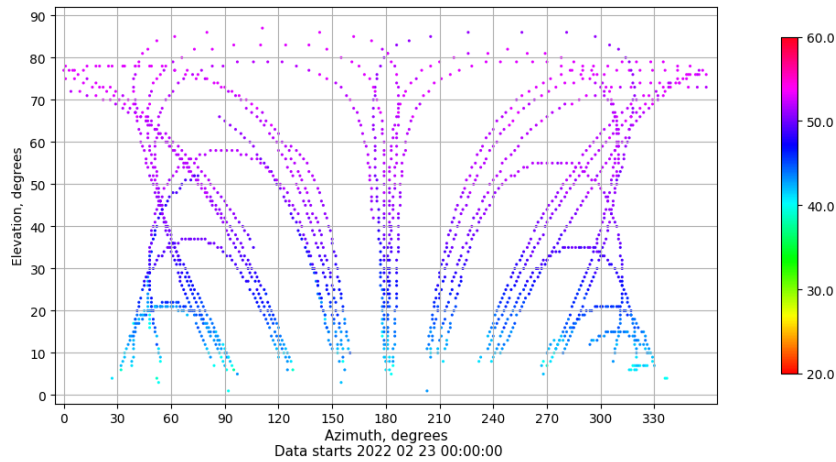
## Multipath GAL E1 y E5

Skyplot for station FRRL. Parameter M1C Data file FRRL00ESP\_R\_2022054.xtr Skyplot for station FRRL. Parameter M5Q Data file FRRL00ESP\_R\_2022054.xtr



## Azimuth-Elevacion

Azimuth-elevation plot for station FRRL. Signal to Noise S1C Data file FRRL00ESP\_R\_2022054.xtr



## Tiempo-Elevacion

Time-elevation plot for station FRRL. Signal to Noise S1C Data file FRRL00ESP\_R\_2022054.xtr

