

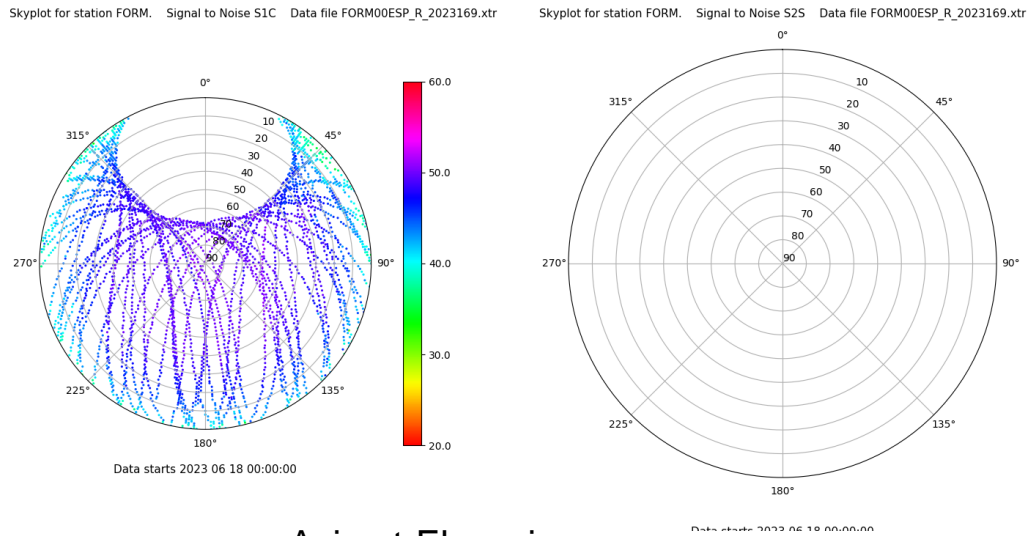
Control de calidad GNSS GPS diario

Estacion: FORM

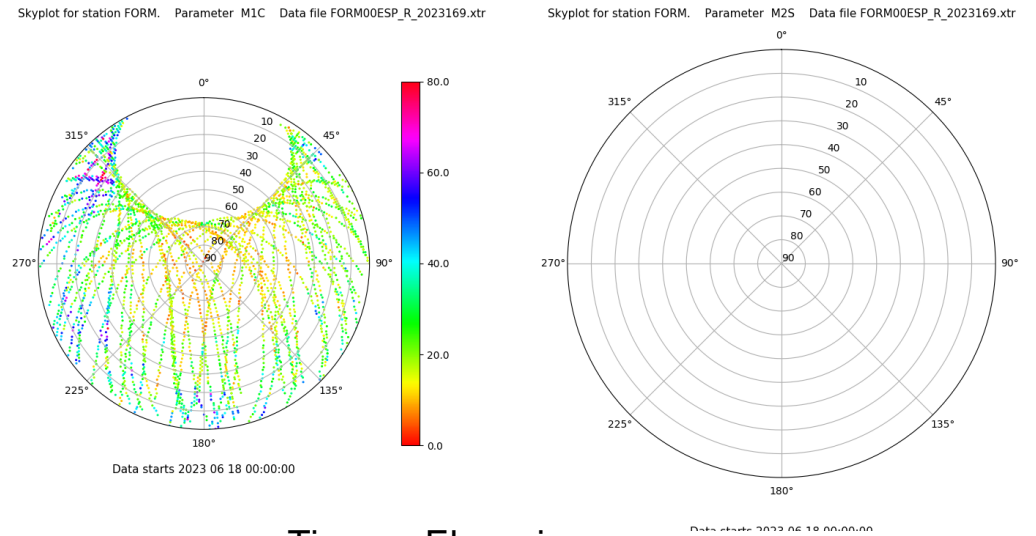
Fecha: 2023 06 18

Dia del año: 169

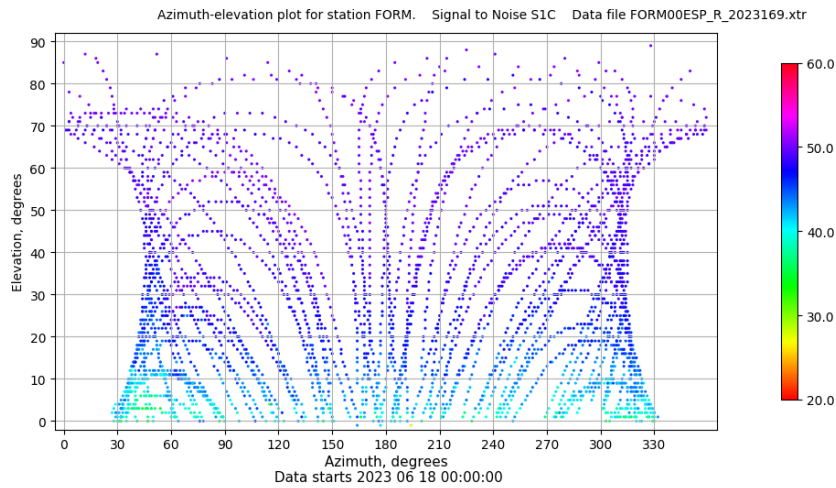
Señal-Ruido GPS L1 y L2



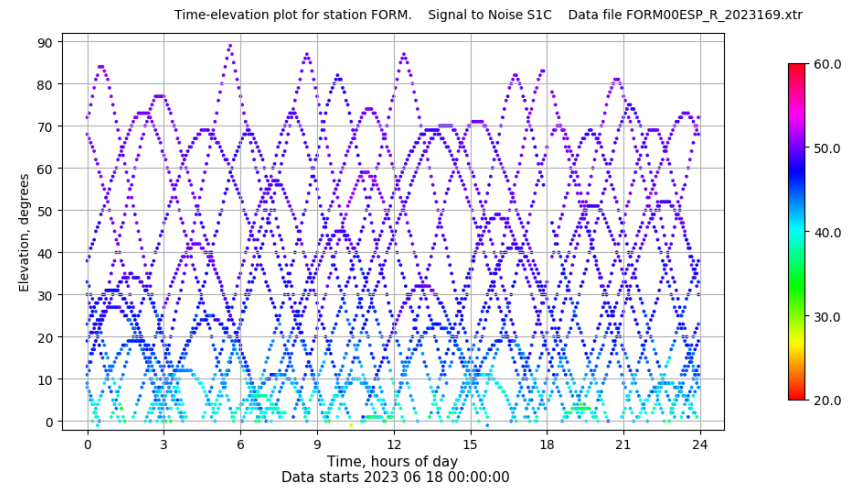
Multipath GPS L1 y L2



Azimut-Elevacion



Tiempo-Elevacion



Control de calidad GNSS GLO diario

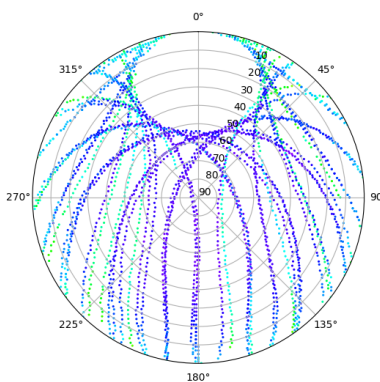
Estacion: FORM

Fecha: 2023 06 18

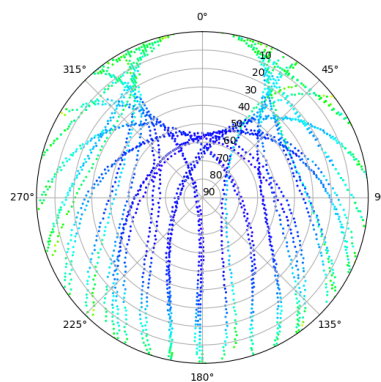
Dia del año: 169

Señal-Ruido GLO L1 y L2

Skyplot for station FORM. Signal to Noise S1C Data file FORM00ESP_R_2023169.xtr Skyplot for station FORM. Signal to Noise S2P Data file FORM00ESP_R_2023169.xtr



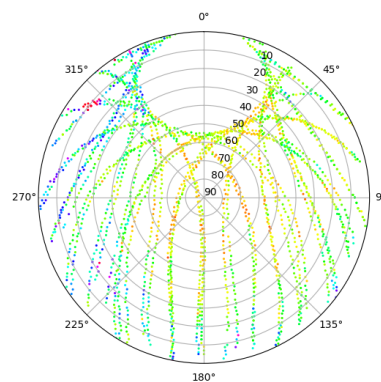
Data starts 2023 06 18 00:00:00



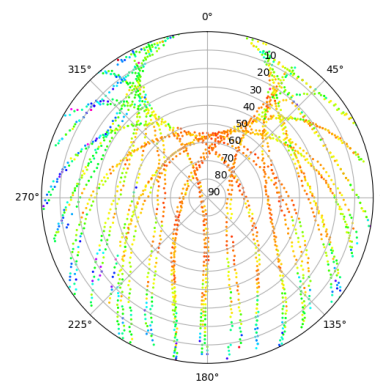
Data starts 2023 06 18 00:00:00

Multipath GLO L1 y L2

Skyplot for station FORM. Parameter M1C Data file FORM00ESP_R_2023169.xtr Skyplot for station FORM. Parameter M2P Data file FORM00ESP_R_2023169.xtr



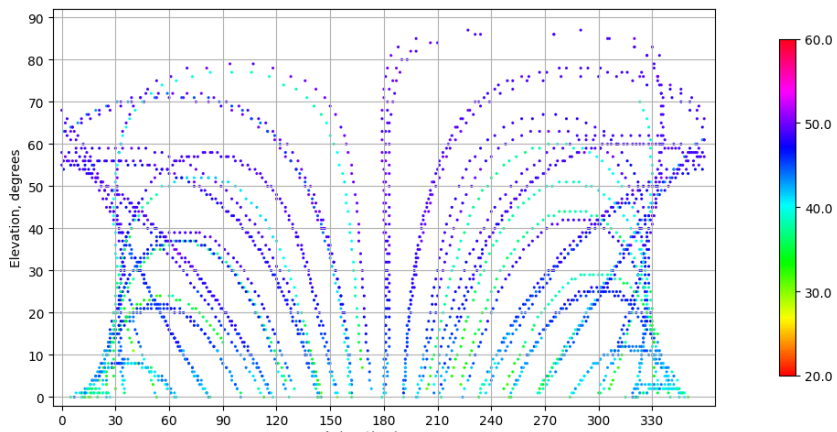
Data starts 2023 06 18 00:00:00



Data starts 2023 06 18 00:00:00

Azimuth-Elevacion

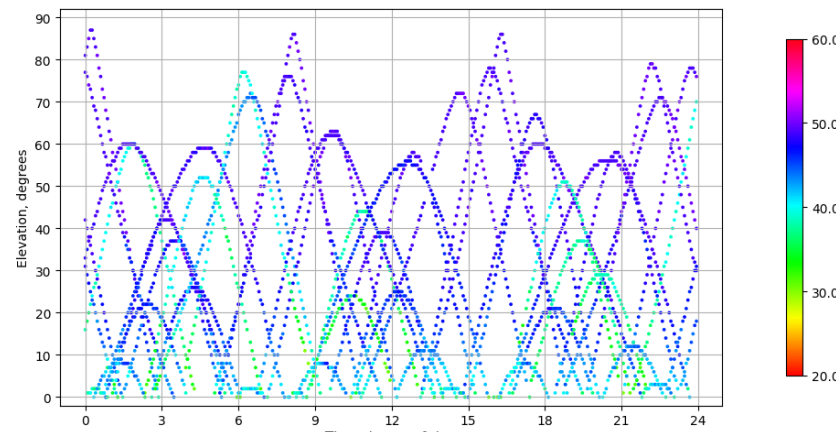
Azimuth-elevation plot for station FORM. Signal to Noise S1C Data file FORM00ESP_R_2023169.xtr



Data starts 2023 06 18 00:00:00

Tiempo-Elevacion

Time-elevation plot for station FORM. Signal to Noise S1C Data file FORM00ESP_R_2023169.xtr



Data starts 2023 06 18 00:00:00

Control de calidad GNSS GAL diario

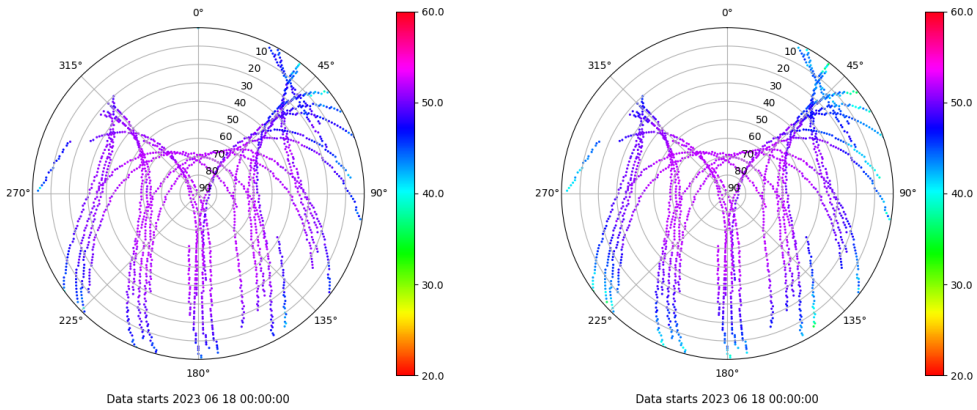
Estacion: FORM

Fecha: 2023 06 18

Dia del año: 169

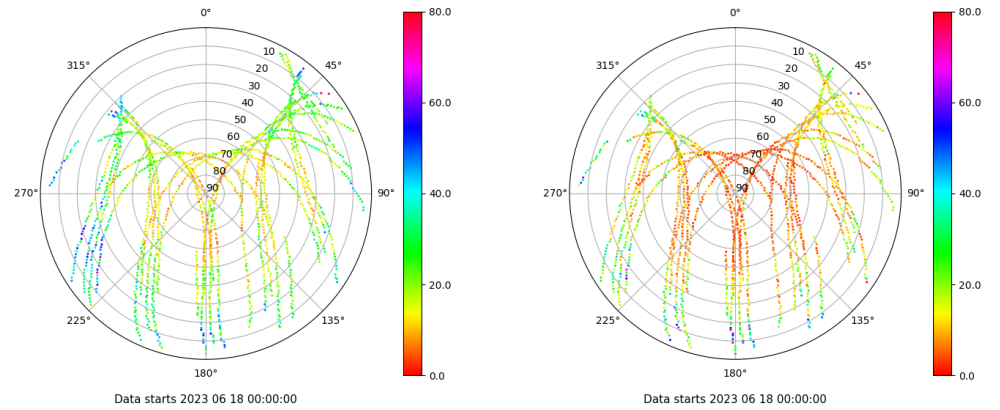
Señal-Ruido GAL E1 y E5

Skyplot for station FORM. Signal to Noise S1C Data file FORM00ESP_R_2023169.xtr Skyplot for station FORM. Signal to Noise S5Q Data file FORM00ESP_R_2023169.xtr



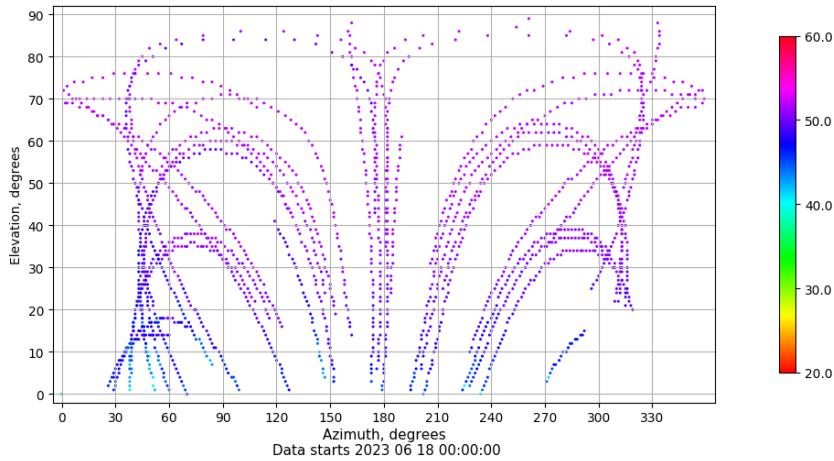
Multipath GAL E1 y E5

Skyplot for station FORM. Parameter M1C Data file FORM00ESP_R_2023169.xtr Skyplot for station FORM. Parameter M5Q Data file FORM00ESP_R_2023169.xtr



Azimuth-Elevacion

Azimuth-elevation plot for station FORM. Signal to Noise S1C Data file FORM00ESP_R_2023169.xtr



Tiempo-Elevacion

Time-elevation plot for station FORM. Signal to Noise S1C Data file FORM00ESP_R_2023169.xtr

