

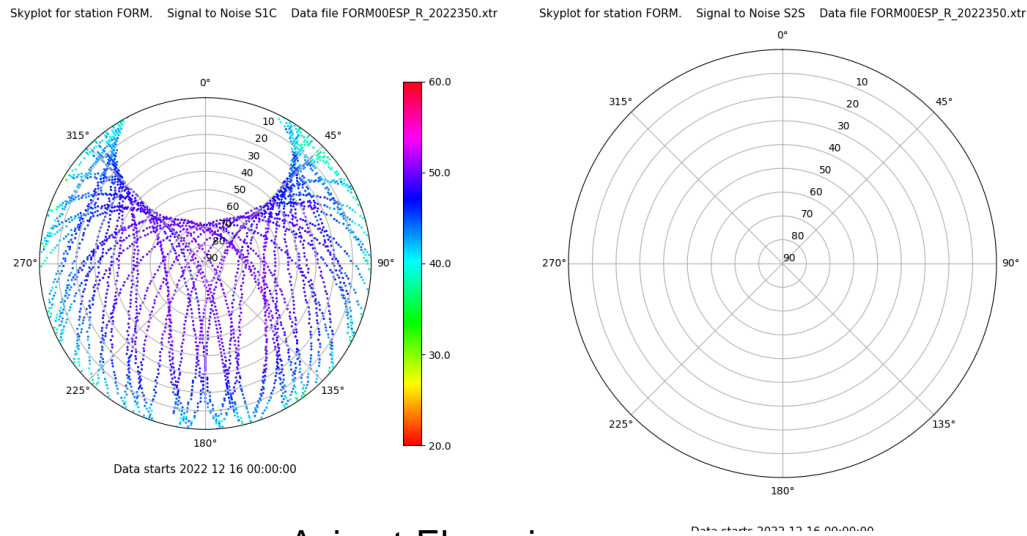
Control de calidad GNSS GPS diario

Estacion: FORM

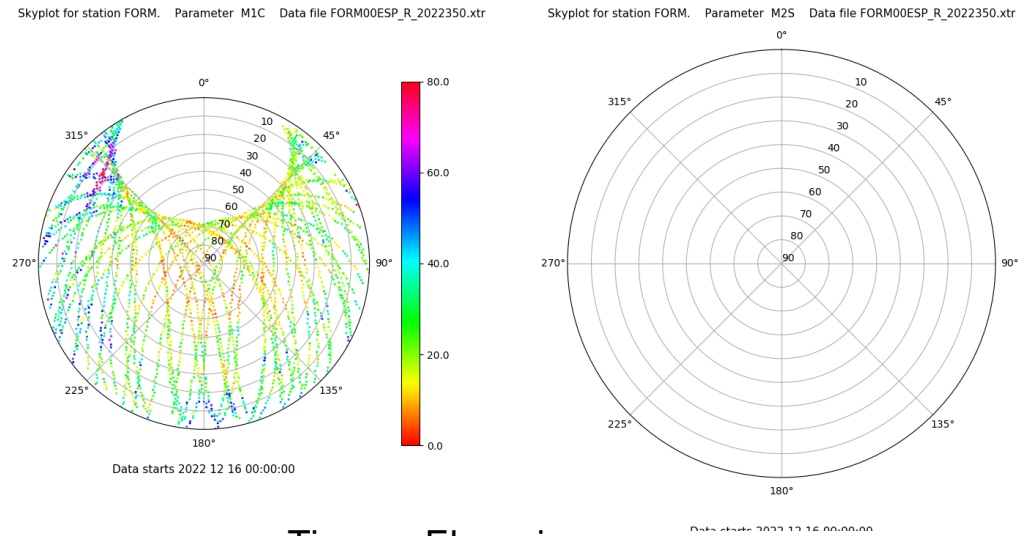
Fecha: 2022 12 16

Dia del año: 350

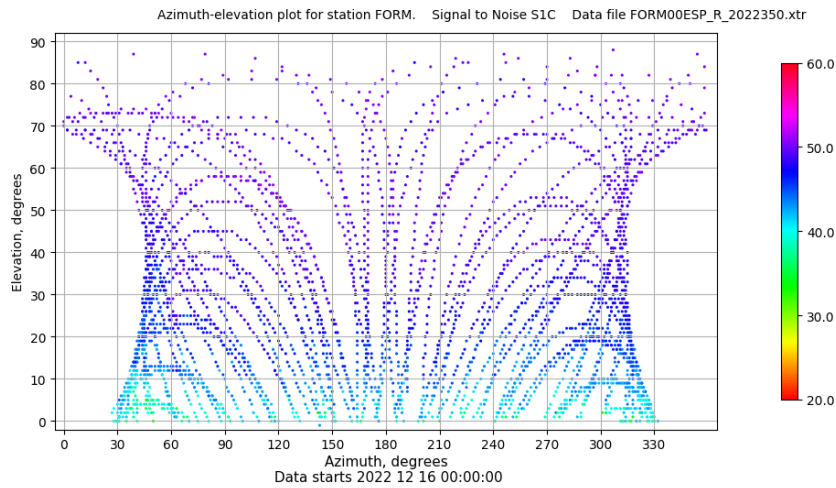
Señal-Ruido GPS L1 y L2



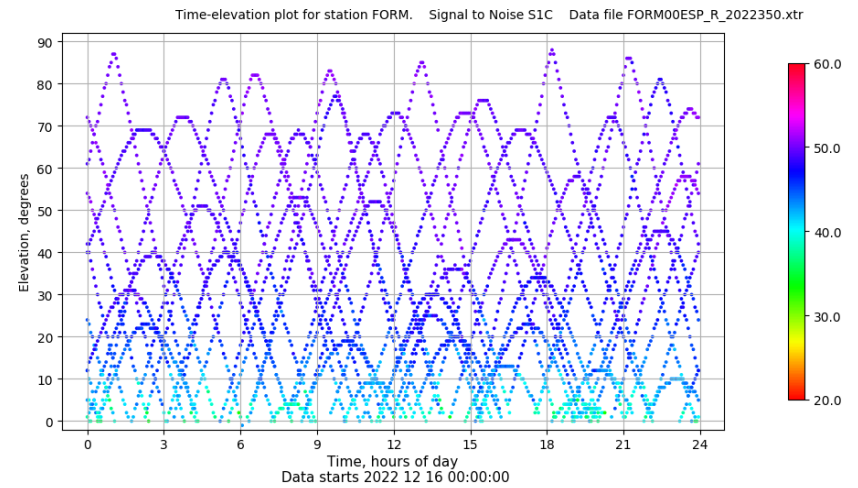
Multipath GPS L1 y L2



Azimuth-Elevacion



Tiempo-Elevacion



Control de calidad GNSS GLO diario

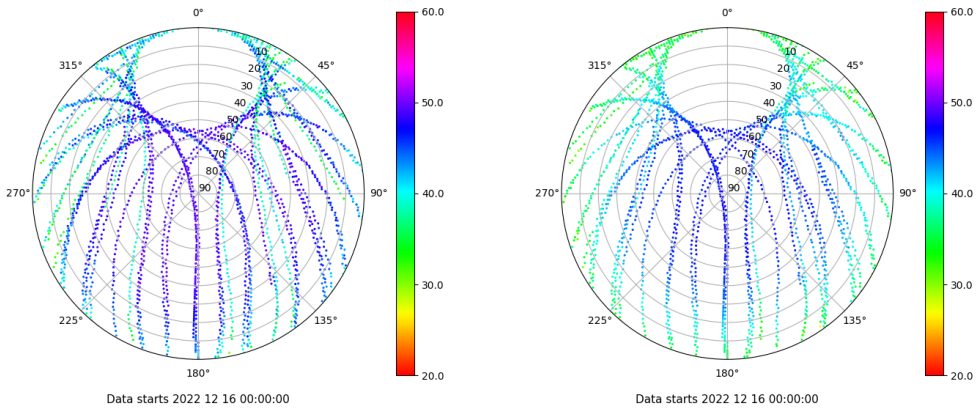
Estacion: FORM

Fecha: 2022 12 16

Dia del año: 350

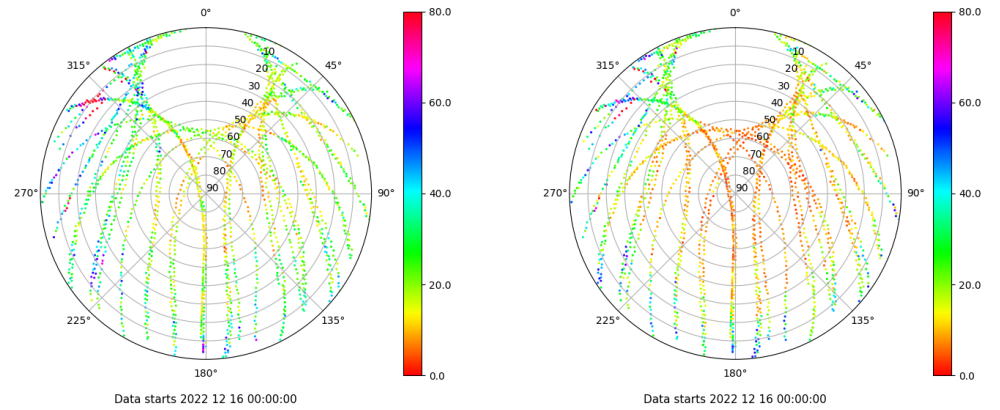
Señal-Ruido GLO L1 y L2

Skyplot for station FORM. Signal to Noise S1C Data file FORM00ESP_R_2022350.xtr Skyplot for station FORM. Signal to Noise S2P Data file FORM00ESP_R_2022350.xtr



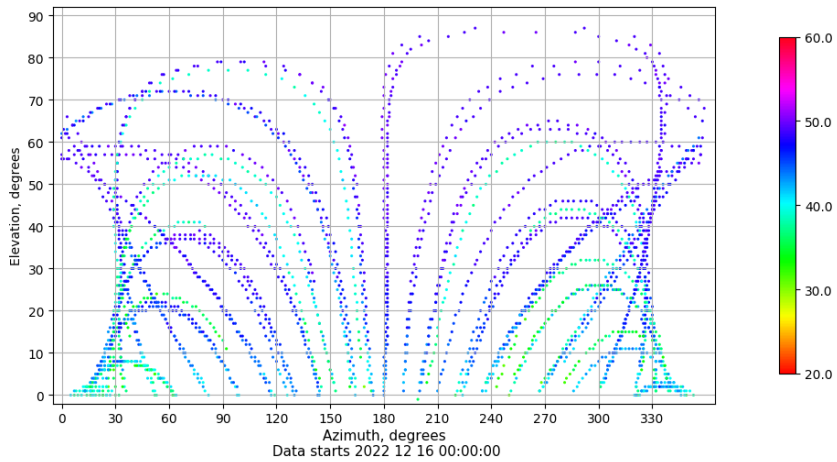
Multipath GLO L1 y L2

Skyplot for station FORM. Parameter M1C Data file FORM00ESP_R_2022350.xtr Skyplot for station FORM. Parameter M2P Data file FORM00ESP_R_2022350.xtr



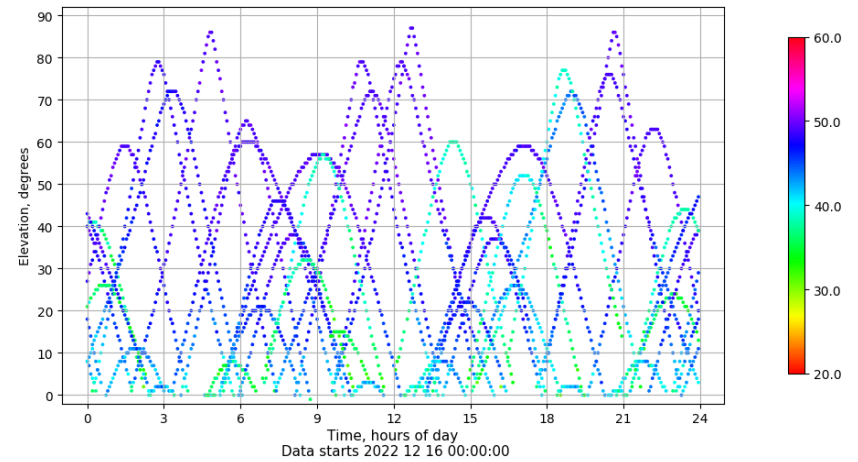
Azimuth-Elevacion

Azimuth-elevation plot for station FORM. Signal to Noise S1C Data file FORM00ESP_R_2022350.xtr



Tiempo-Elevacion

Time-elevation plot for station FORM. Signal to Noise S1C Data file FORM00ESP_R_2022350.xtr



Control de calidad GNSS GAL diario

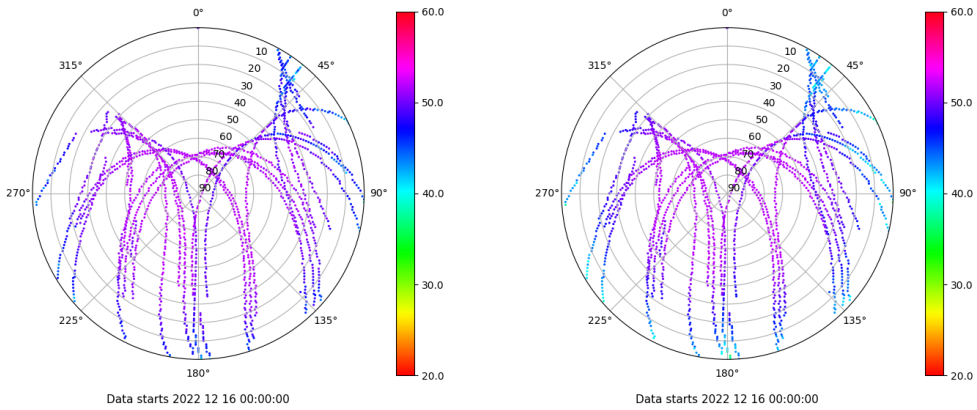
Estacion: FORM

Fecha: 2022 12 16

Dia del año: 350

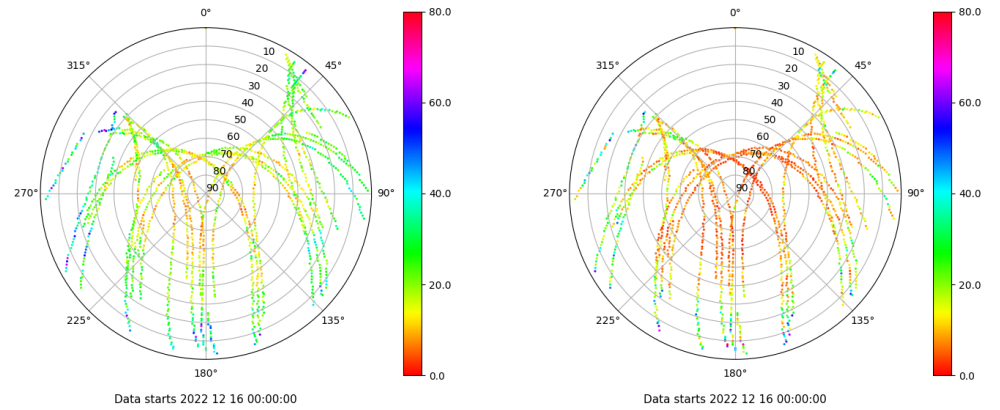
Señal-Ruido GAL E1 y E5

Skyplot for station FORM. Signal to Noise S1C Data file FORM00ESP_R_2022350.xtr Skyplot for station FORM. Signal to Noise S5Q Data file FORM00ESP_R_2022350.xtr



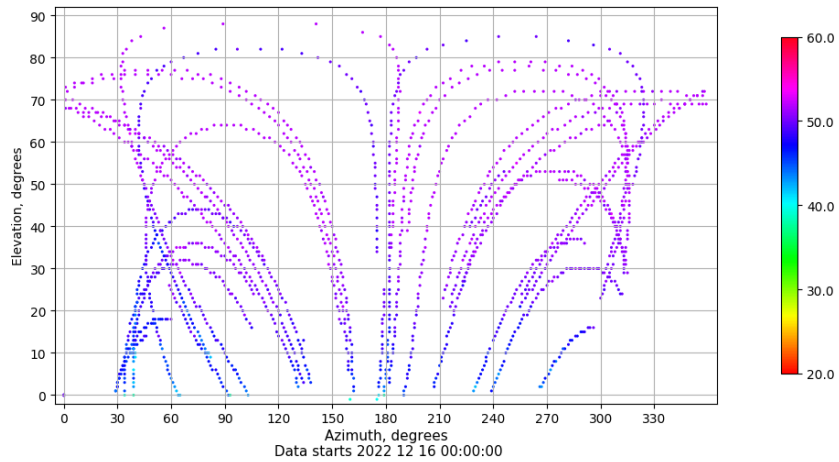
Multipath GAL E1 y E5

Skyplot for station FORM. Parameter M1C Data file FORM00ESP_R_2022350.xtr Skyplot for station FORM. Parameter M5Q Data file FORM00ESP_R_2022350.xtr



Azimut-Elevacion

Azimuth-elevation plot for station FORM. Signal to Noise S1C Data file FORM00ESP_R_2022350.xtr



Tiempo-Elevacion

Time-elevation plot for station FORM. Signal to Noise S1C Data file FORM00ESP_R_2022350.xtr

