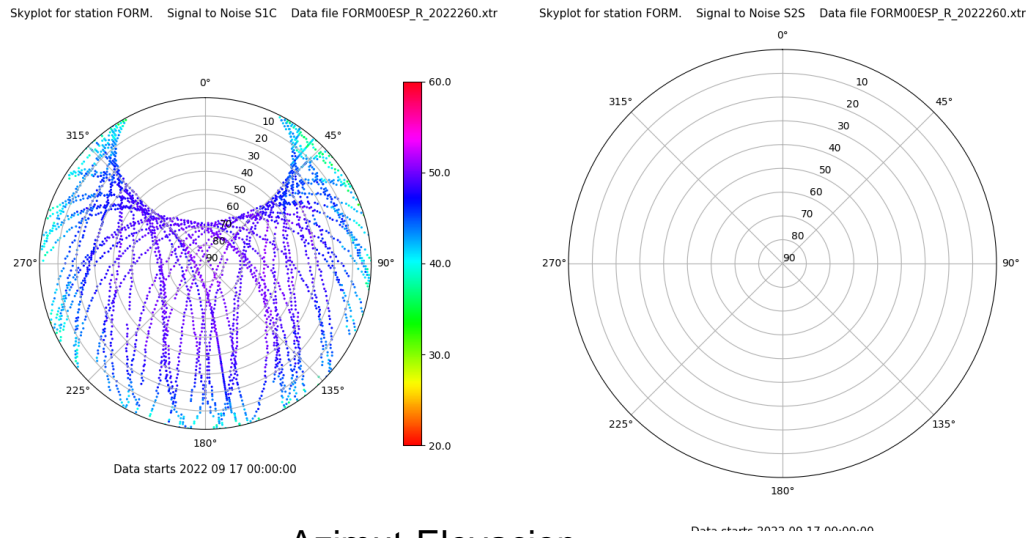


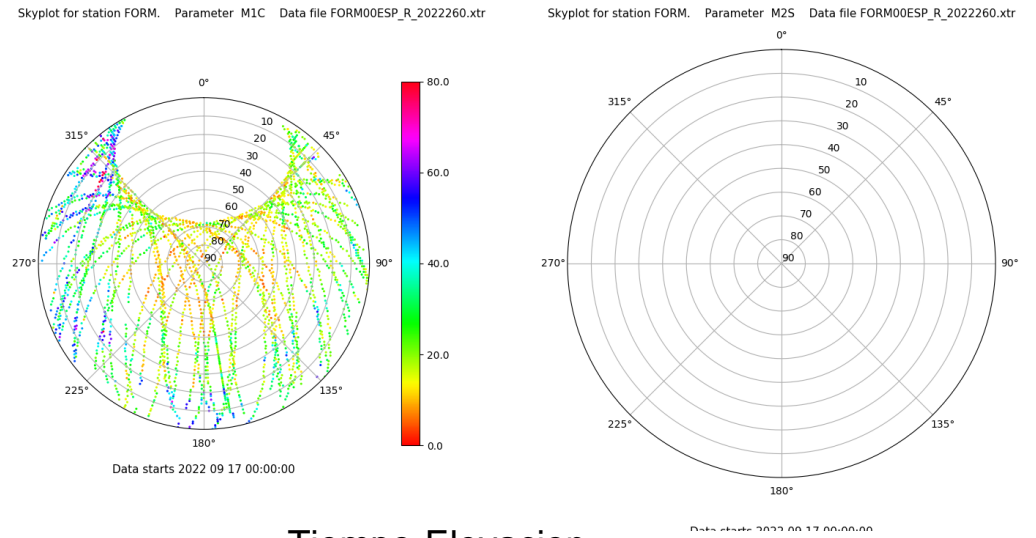
# Control de calidad GNSS GPS diario

Estacion: FORM  
 Fecha: 2022 09 17  
 Dia del año: 260

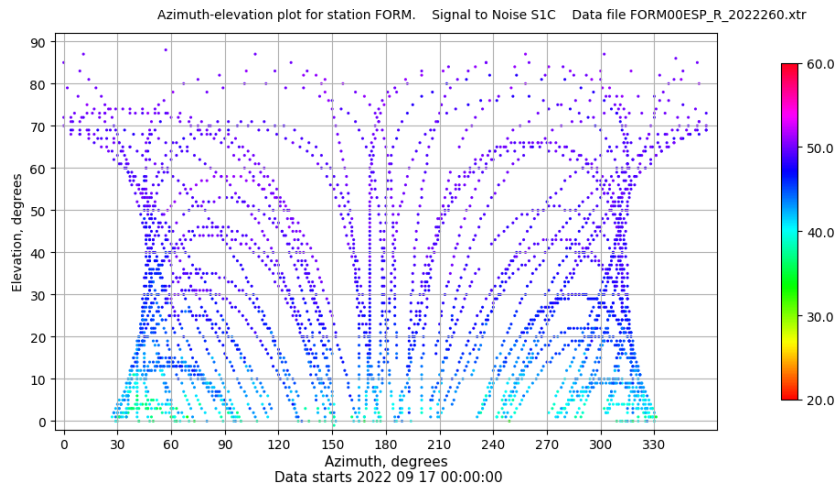
## Señal-Ruido GPS L1 y L2



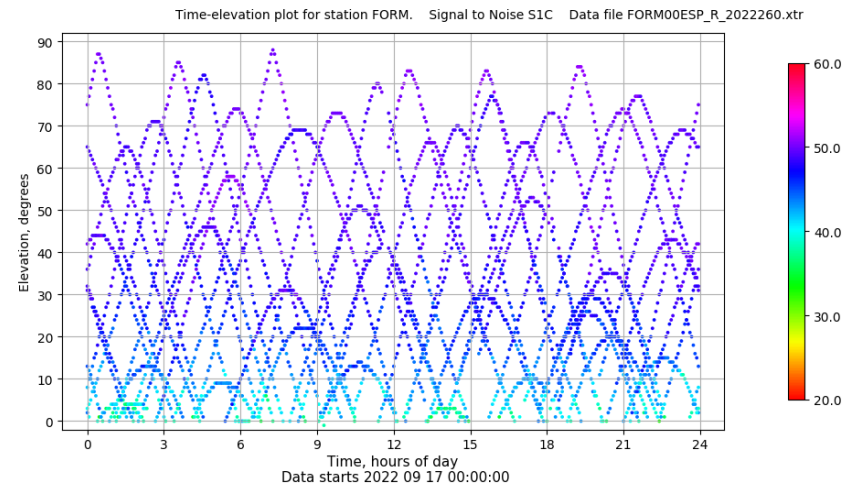
## Multipath GPS L1 y L2



## Azimut-Elevacion



## Tiempo-Elevacion

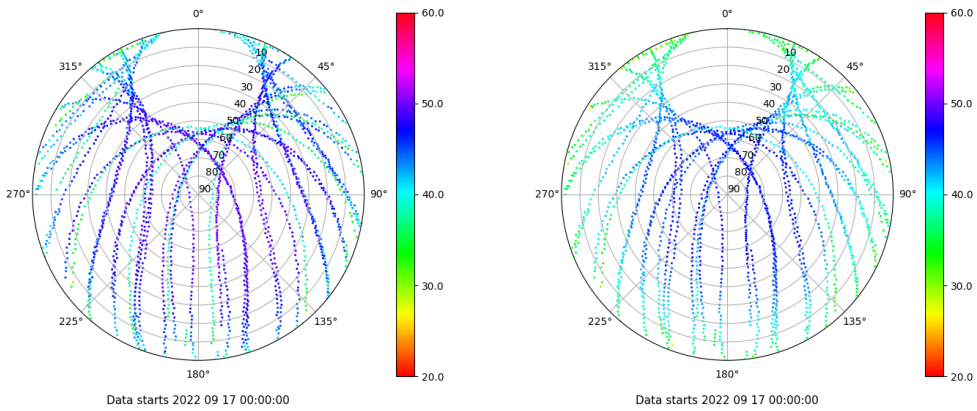


# Control de calidad GNSS GLO diario

Estacion: FORM  
 Fecha: 2022 09 17  
 Dia del año: 260

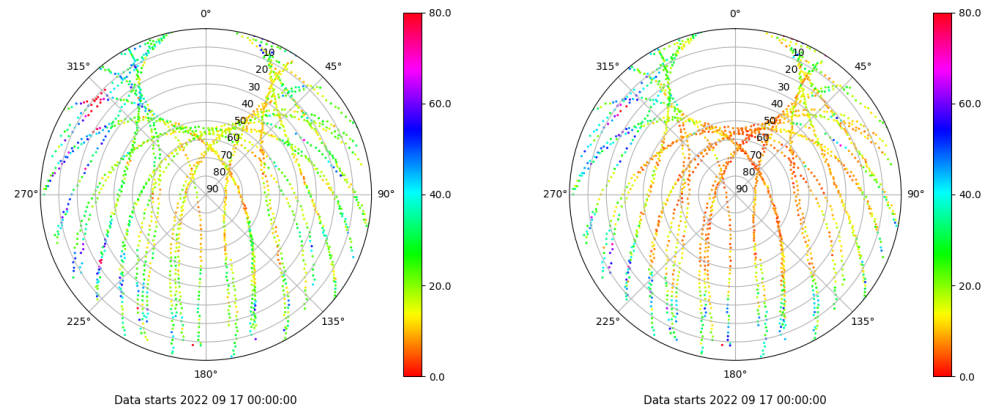
## Señal-Ruido GLO L1 y L2

Skyplot for station FORM. Signal to Noise S1C Data file FORM00ESP\_R\_2022260.xtr Skyplot for station FORM. Signal to Noise S2P Data file FORM00ESP\_R\_2022260.xtr



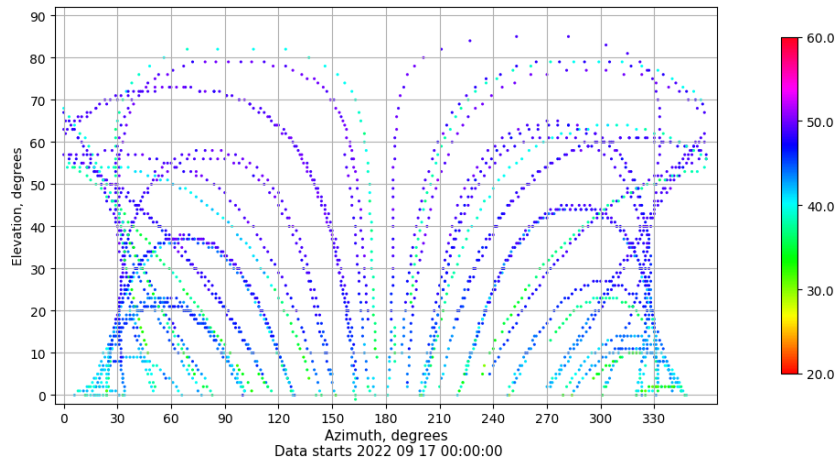
## Multipath GLO L1 y L2

Skyplot for station FORM. Parameter M1C Data file FORM00ESP\_R\_2022260.xtr Skyplot for station FORM. Parameter M2P Data file FORM00ESP\_R\_2022260.xtr



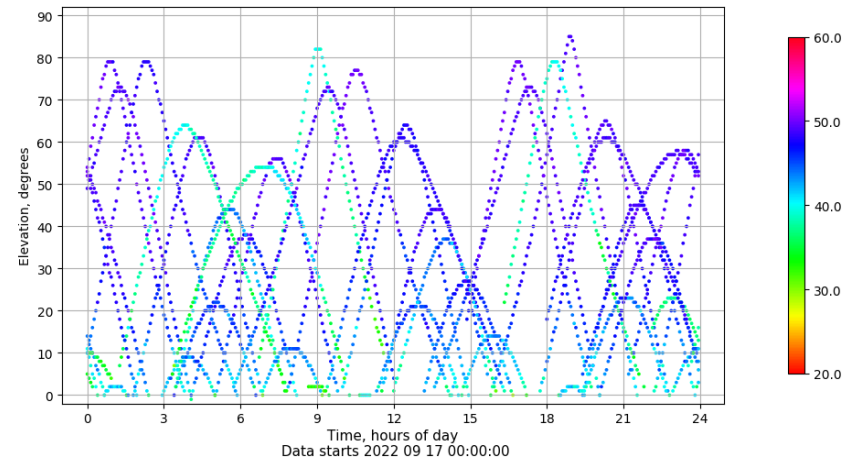
## Azimuth-Elevacion

Azimuth-elevation plot for station FORM. Signal to Noise S1C Data file FORM00ESP\_R\_2022260.xtr



## Tiempo-Elevacion

Time-elevation plot for station FORM. Signal to Noise S1C Data file FORM00ESP\_R\_2022260.xtr

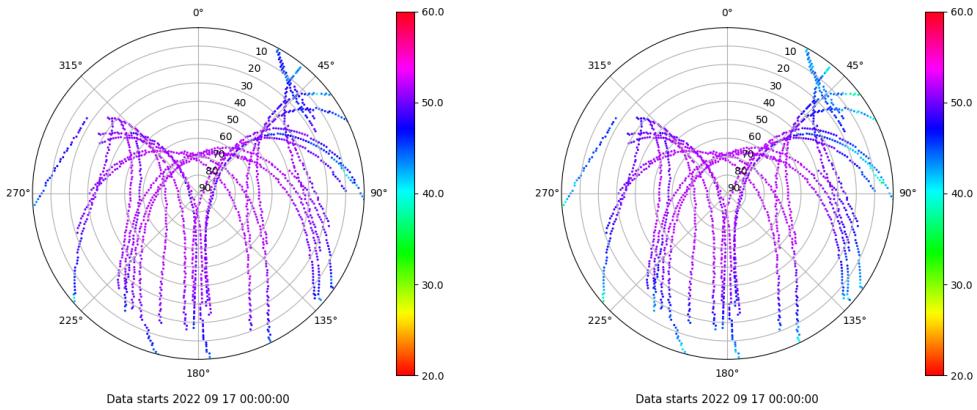


# Control de calidad GNSS GAL diario

Estacion: FORM  
 Fecha: 2022 09 17  
 Dia del año: 260

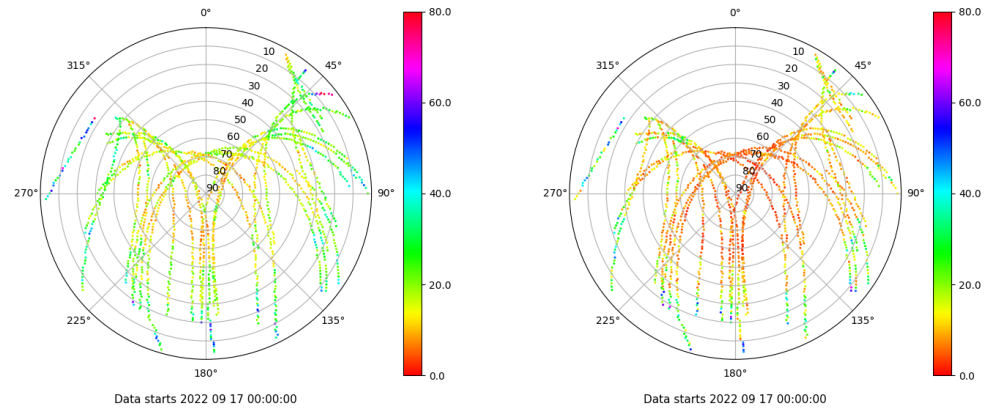
## Señal-Ruido GAL E1 y E5

Skyplot for station FORM. Signal to Noise S1C Data file FORM00ESP\_R\_2022260.xtr Skyplot for station FORM. Signal to Noise S5Q Data file FORM00ESP\_R\_2022260.xtr



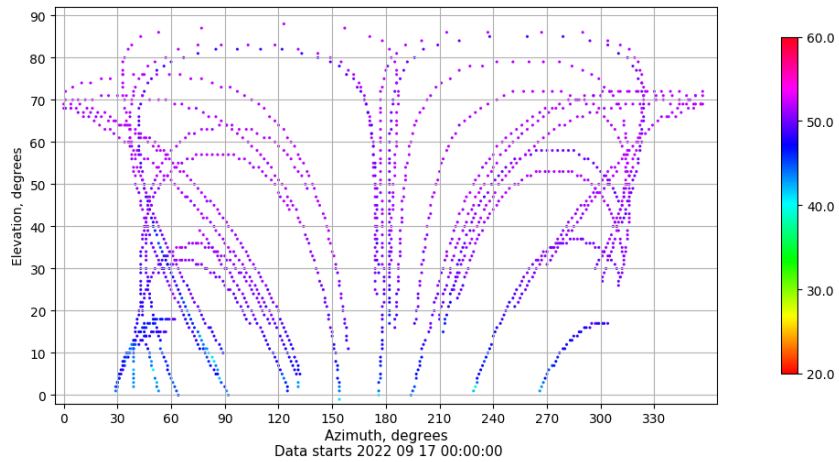
## Multipath GAL E1 y E5

Skyplot for station FORM. Parameter M1C Data file FORM00ESP\_R\_2022260.xtr Skyplot for station FORM. Parameter M5Q Data file FORM00ESP\_R\_2022260.xtr



## Azimuth-Elevacion

Azimuth-elevation plot for station FORM. Signal to Noise S1C Data file FORM00ESP\_R\_2022260.xtr



## Tiempo-Elevacion

Time-elevation plot for station FORM. Signal to Noise S1C Data file FORM00ESP\_R\_2022260.xtr

