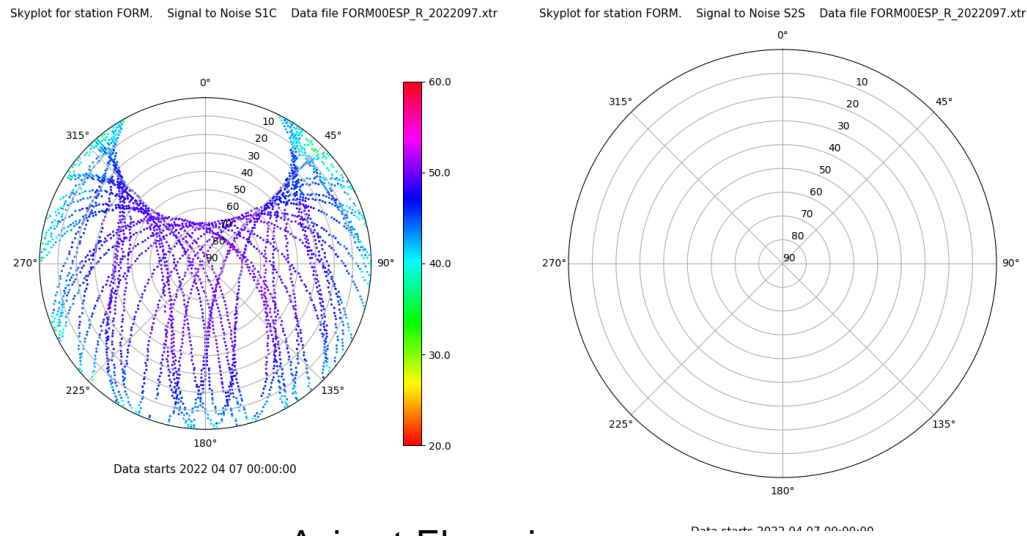


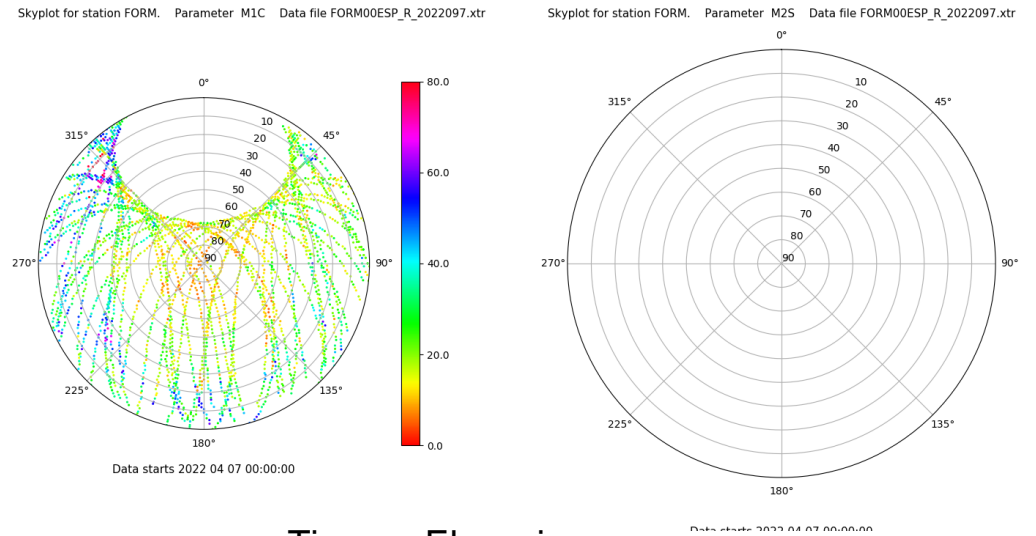
Control de calidad GNSS GPS diario

Estacion: FORM
 Fecha: 2022 04 07
 Dia del año: 097

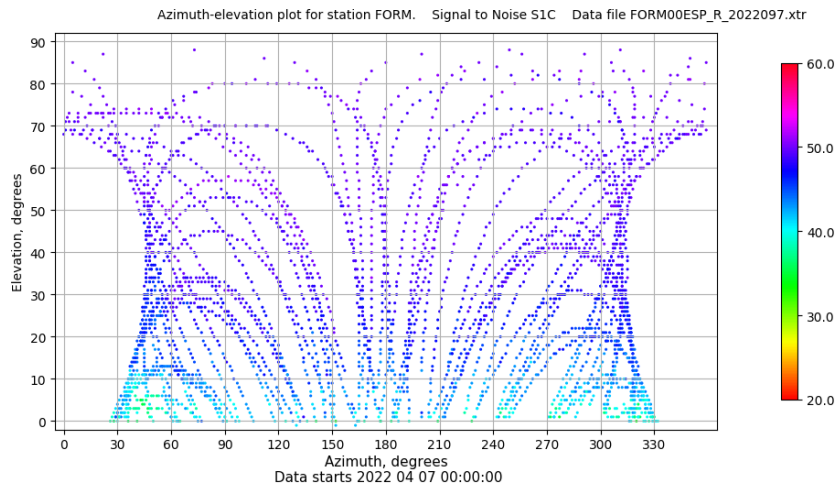
Señal-Ruido GPS L1 y L2



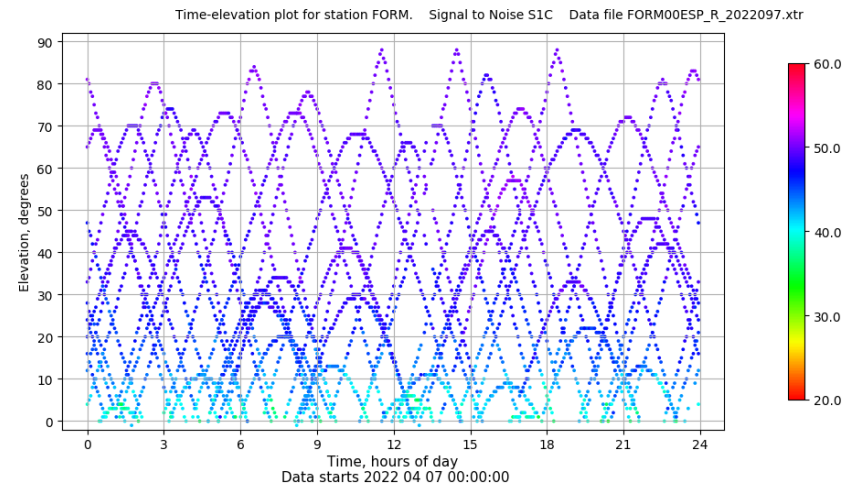
Multipath GPS L1 y L2



Azimuth-Elevacion



Tiempo-Elevacion

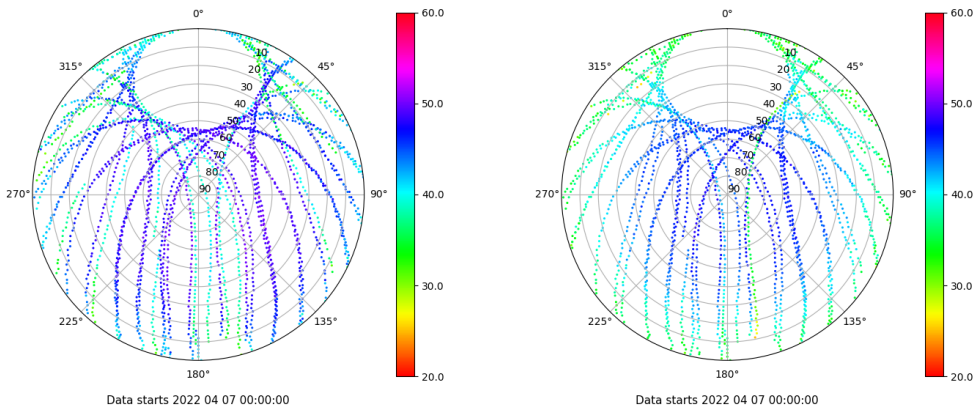


Control de calidad GNSS GLO diario

Estacion: FORM
 Fecha: 2022 04 07
 Dia del año: 097

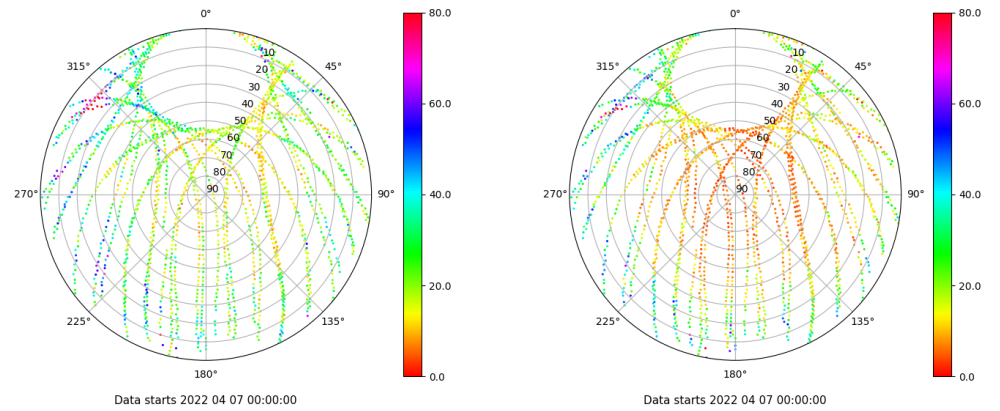
Señal-Ruido GLO L1 y L2

Skyplot for station FORM. Signal to Noise S1C Data file FORM00ESP_R_2022097.xtr Skyplot for station FORM. Signal to Noise S2P Data file FORM00ESP_R_2022097.xtr



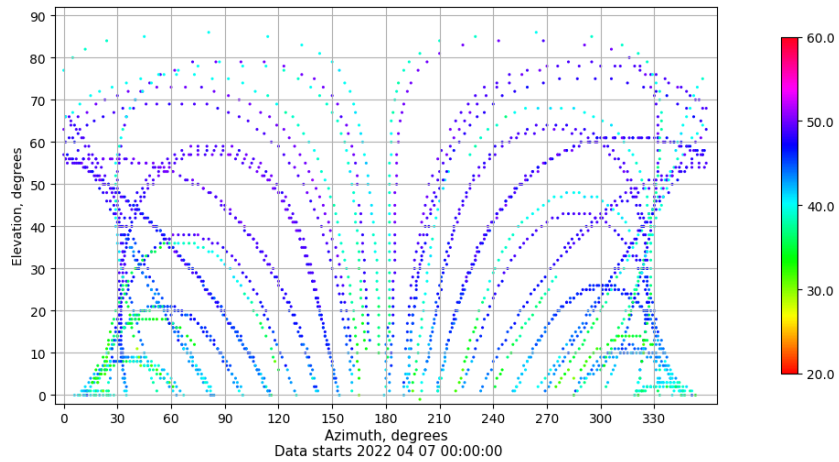
Multipath GLO L1 y L2

Skyplot for station FORM. Parameter M1C Data file FORM00ESP_R_2022097.xtr Skyplot for station FORM. Parameter M2P Data file FORM00ESP_R_2022097.xtr



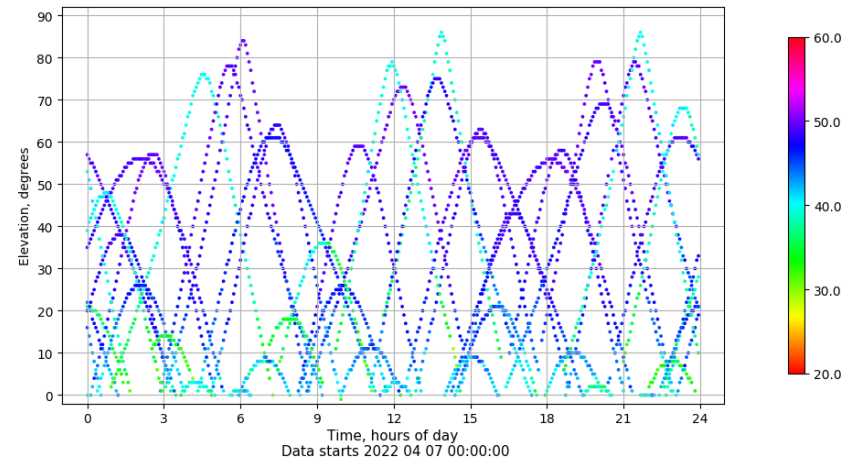
Azimuth-Elevacion

Azimuth-elevation plot for station FORM. Signal to Noise S1C Data file FORM00ESP_R_2022097.xtr



Tiempo-Elevacion

Time-elevation plot for station FORM. Signal to Noise S1C Data file FORM00ESP_R_2022097.xtr

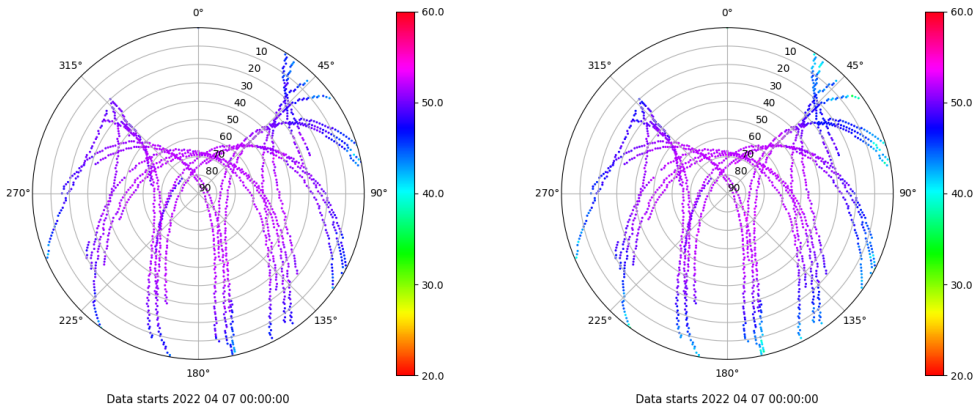


Control de calidad GNSS GAL diario

Estacion: FORM
 Fecha: 2022 04 07
 Dia del año: 097

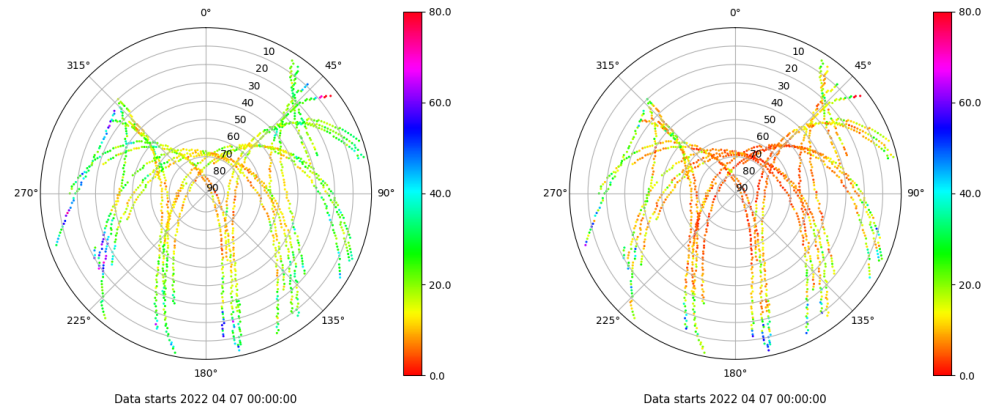
Señal-Ruido GAL E1 y E5

Skyplot for station FORM. Signal to Noise S1C Data file FORM00ESP_R_2022097.xtr Skyplot for station FORM. Signal to Noise S5Q Data file FORM00ESP_R_2022097.xtr



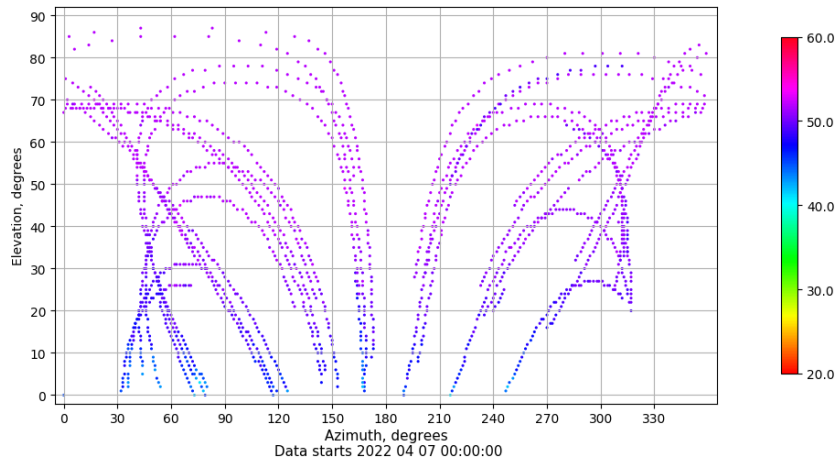
Multipath GAL E1 y E5

Skyplot for station FORM. Parameter M1C Data file FORM00ESP_R_2022097.xtr Skyplot for station FORM. Parameter M5Q Data file FORM00ESP_R_2022097.xtr



Azimuth-Elevacion

Azimuth-elevation plot for station FORM. Signal to Noise S1C Data file FORM00ESP_R_2022097.xtr



Tiempo-Elevacion

Time-elevation plot for station FORM. Signal to Noise S1C Data file FORM00ESP_R_2022097.xtr

