

Control de calidad GNSS GPS diario

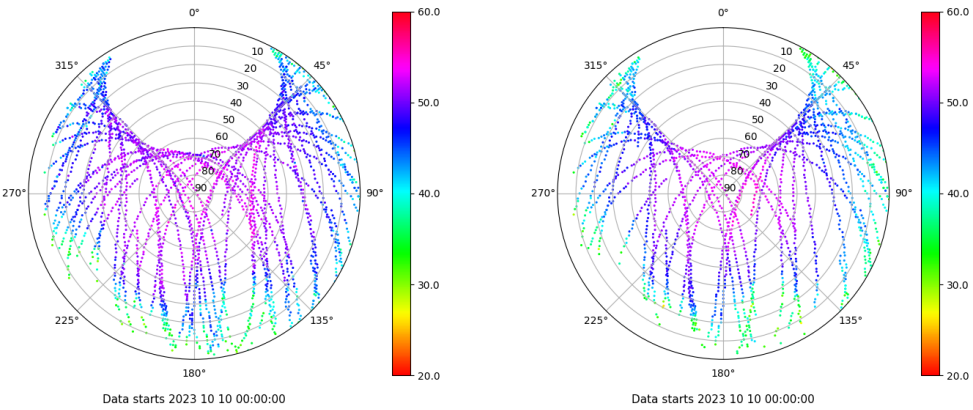
Estacion: EIVI

Fecha: 2023 10 10

Dia del año: 283

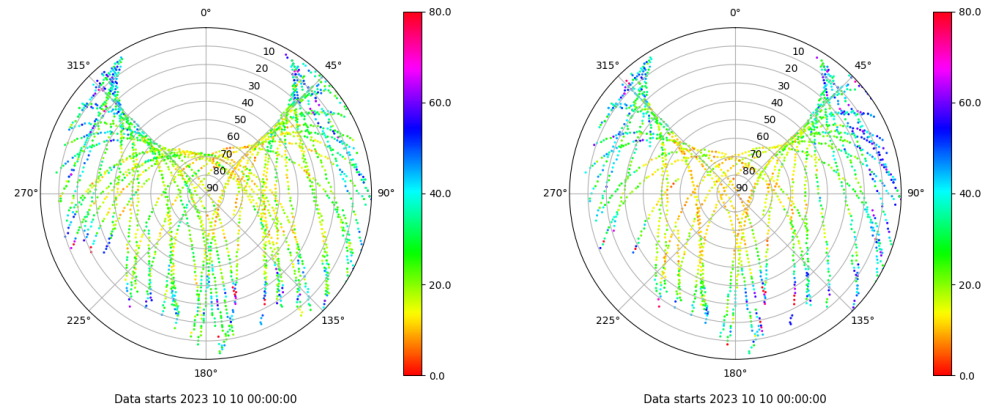
Señal-Ruido GPS L1 y L2

Skyplot for station EIVI. Signal to Noise S1C Data file EIVI00ESP_R_2023283.xtr Skyplot for station EIVI. Signal to Noise S2S Data file EIVI00ESP_R_2023283.xtr



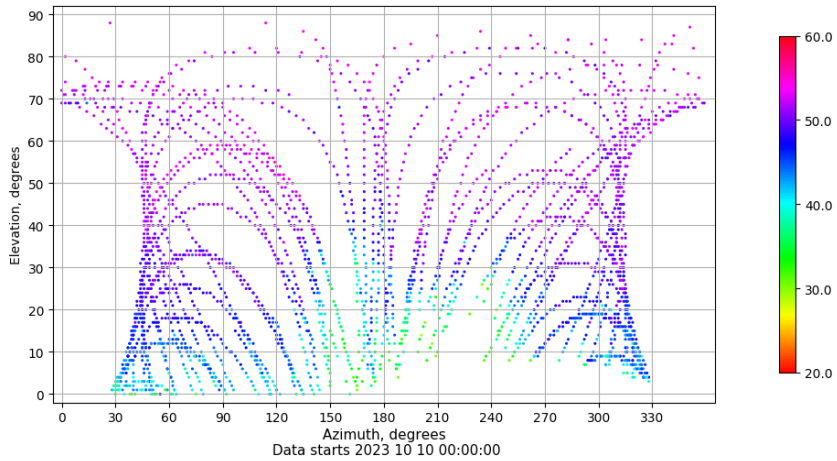
Multipath GPS L1 y L2

Skyplot for station EIVI. Parameter M1C Data file EIVI00ESP_R_2023283.xtr Skyplot for station EIVI. Parameter M2S Data file EIVI00ESP_R_2023283.xtr



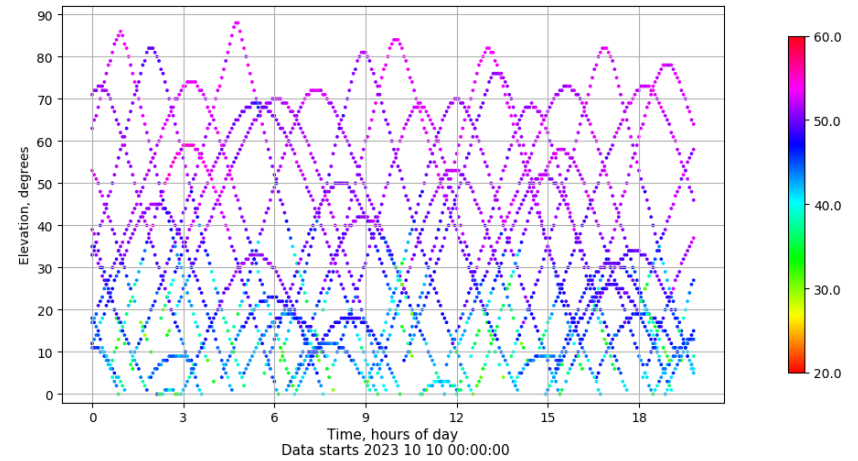
Azimut-Elevacion

Azimuth-elevation plot for station EIVI. Signal to Noise S1C Data file EIVI00ESP_R_2023283.xtr



Tiempo-Elevacion

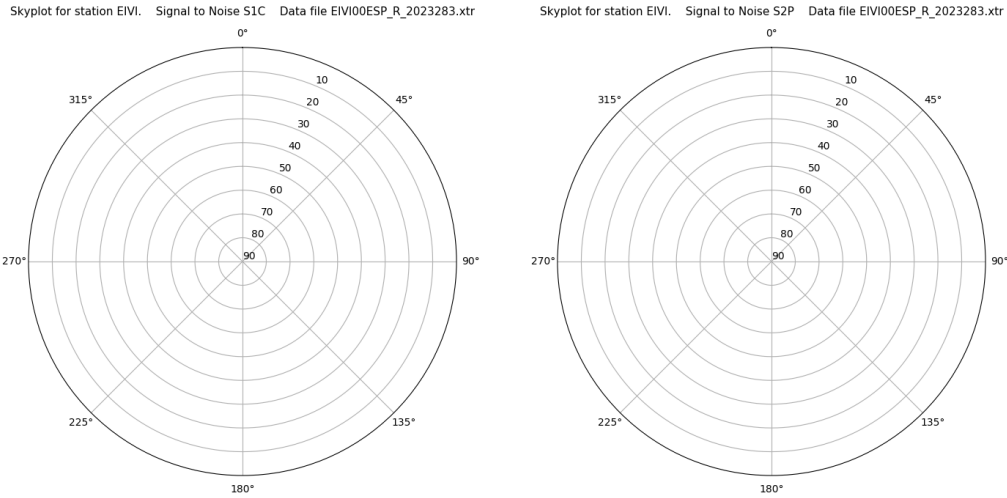
Time-elevation plot for station EIVI. Signal to Noise S1C Data file EIVI00ESP_R_2023283.xtr



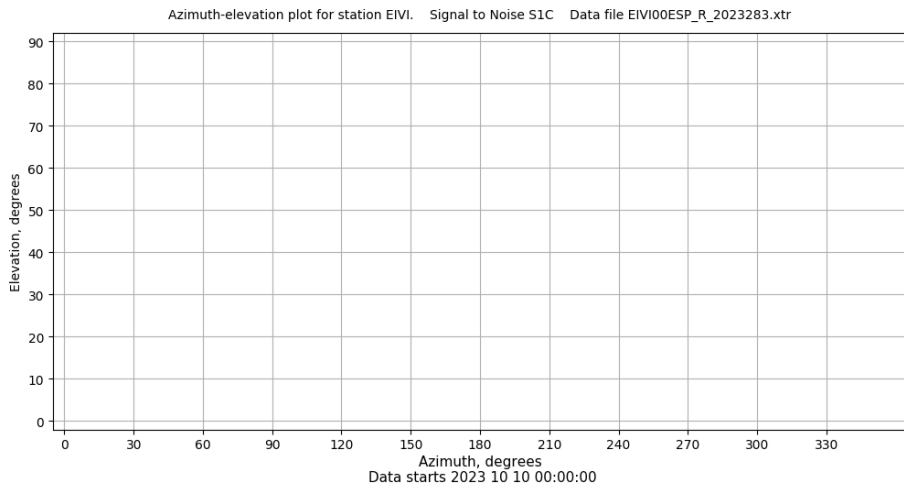
Control de calidad GNSS GLO diario

Estacion: EIVI
 Fecha: 2023 10 10
 Dia del año: 283

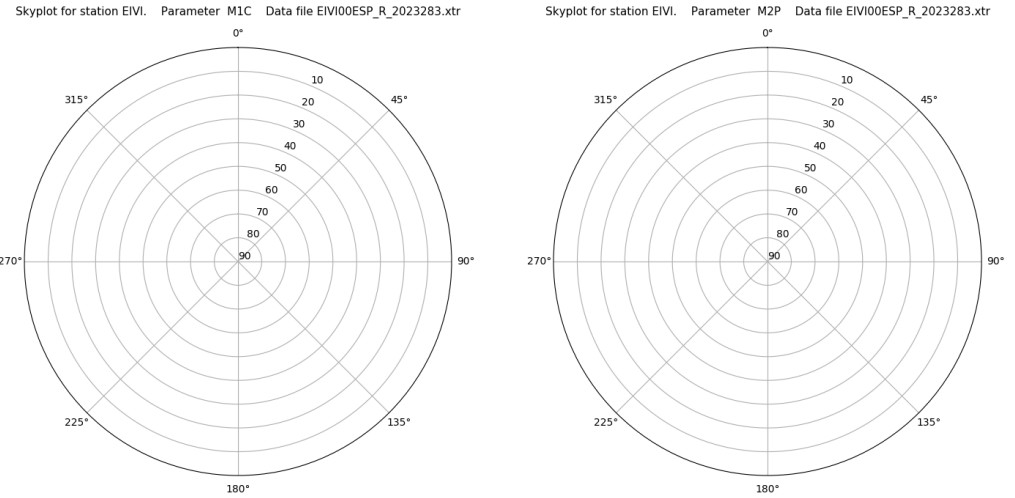
Señal-Ruido GLO L1 y L2



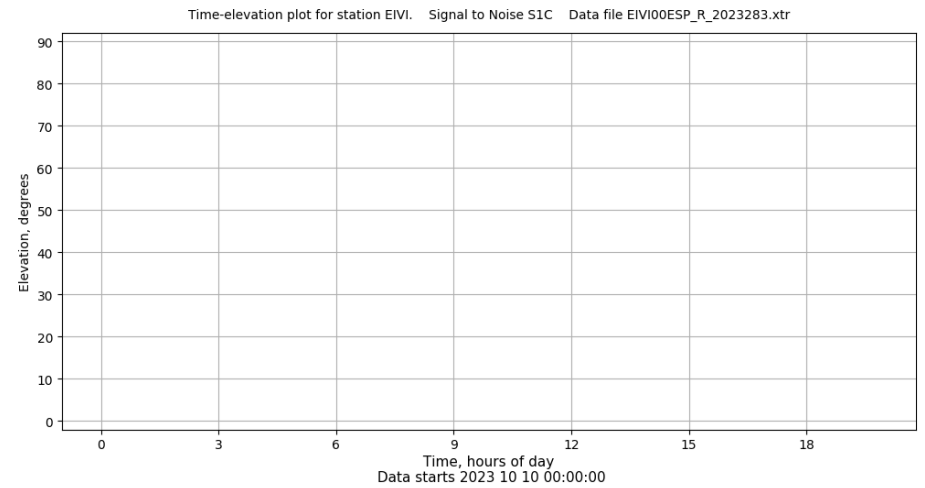
Azimut-Elevacion



Multipath GLO L1 y L2



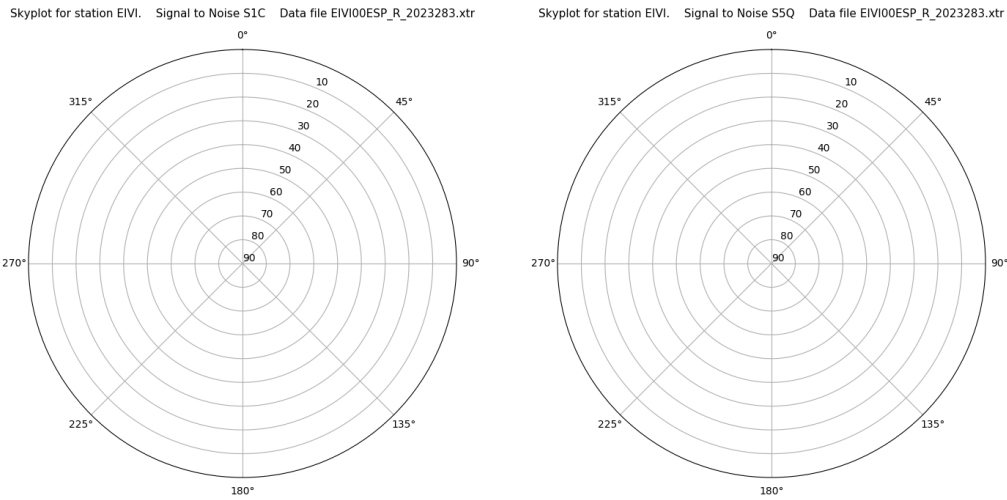
Tiempo-Elevacion



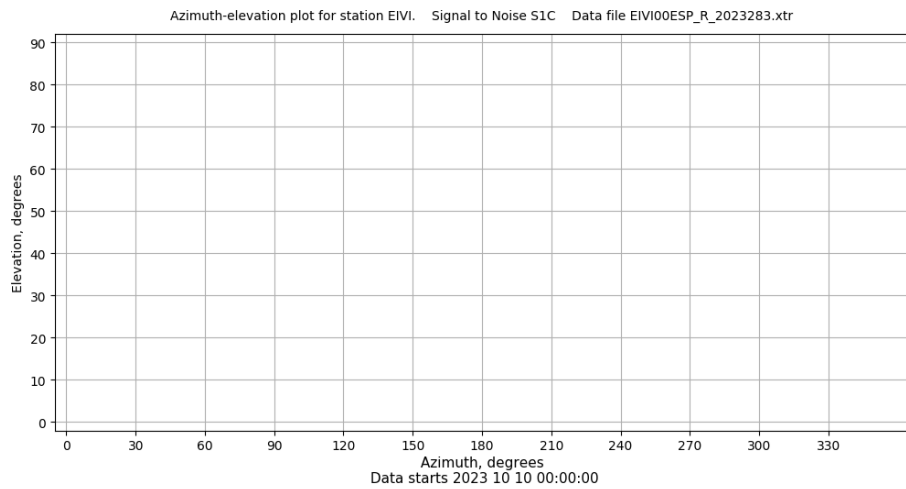
Control de calidad GNSS GAL diario

Estacion: EIVI
 Fecha: 2023 10 10
 Dia del año: 283

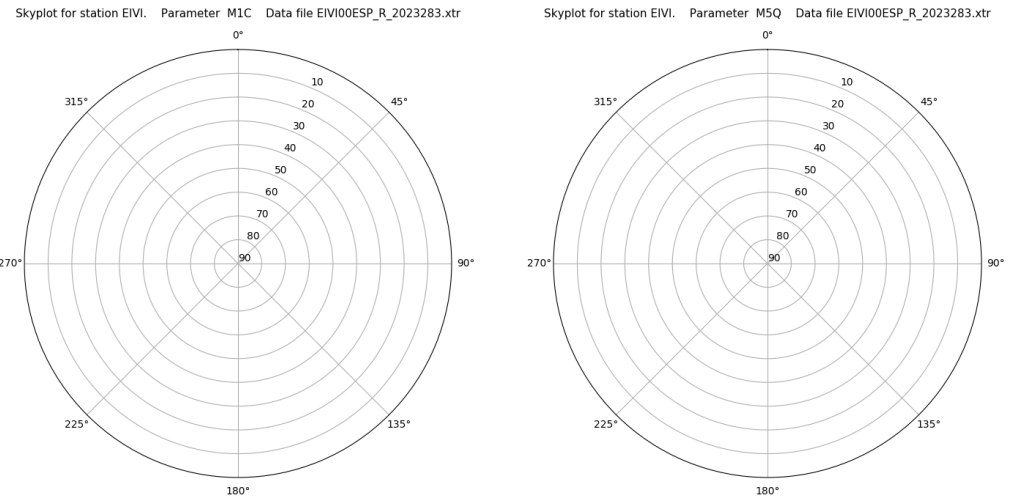
Señal-Ruido GAL E1 y E5



Azimut-Elevacion



Multipath GAL E1 y E5



Tiempo-Elevacion

