

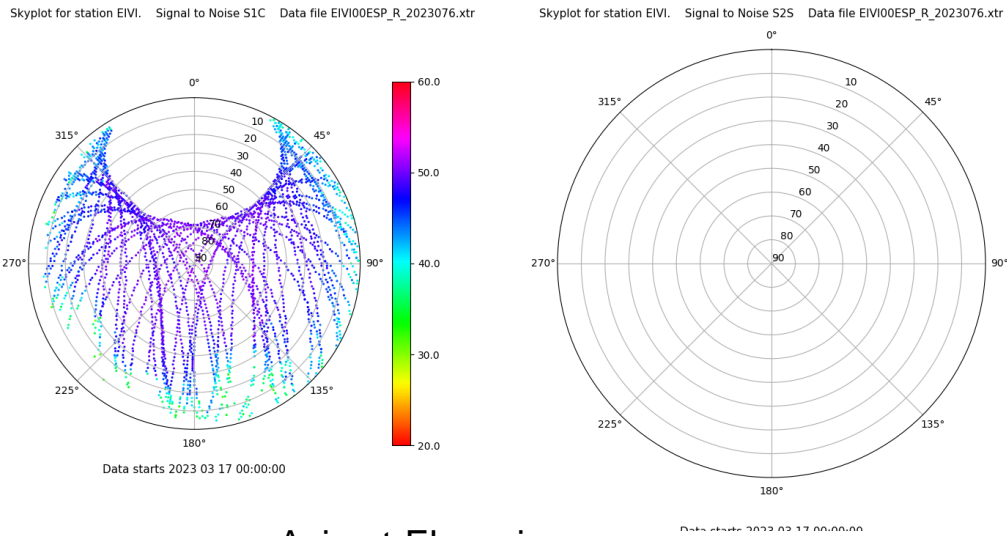
Control de calidad GNSS GPS diario

Estacion: EIVI

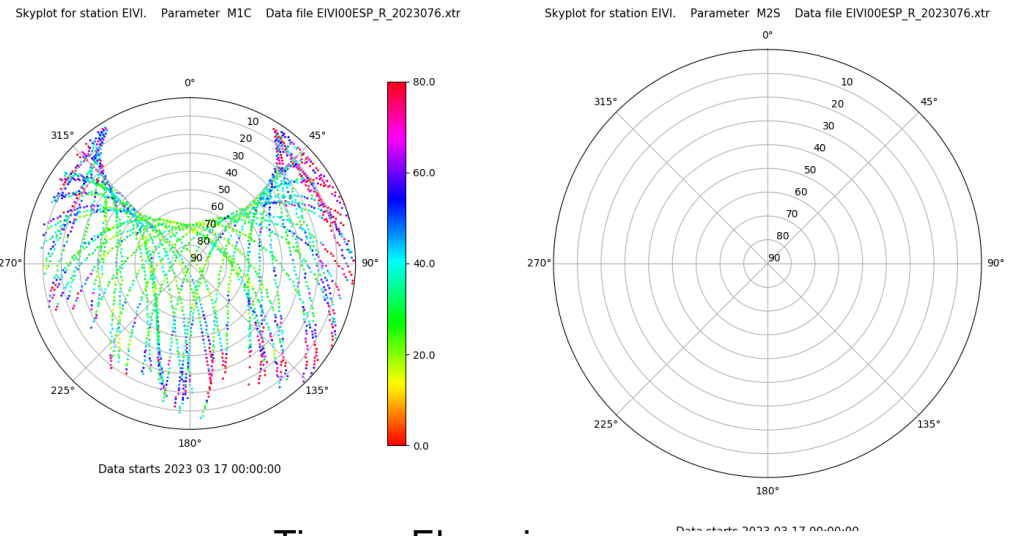
Fecha: 2023 03 17

Dia del año: 076

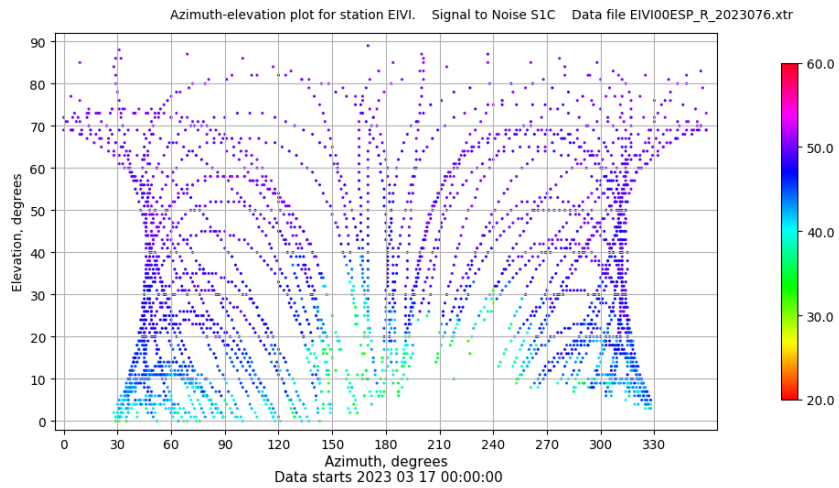
Señal-Ruido GPS L1 y L2



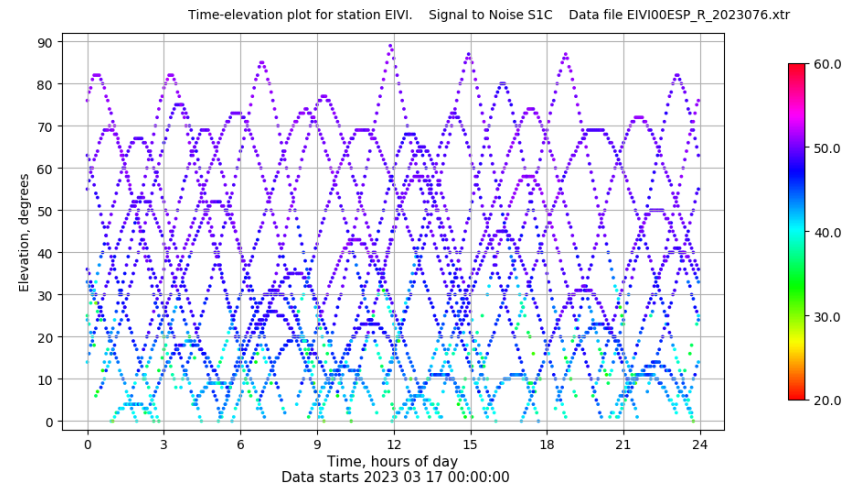
Multipath GPS L1 y L2



Azimut-Elevacion



Tiempo-Elevacion



Control de calidad GNSS GLO diario

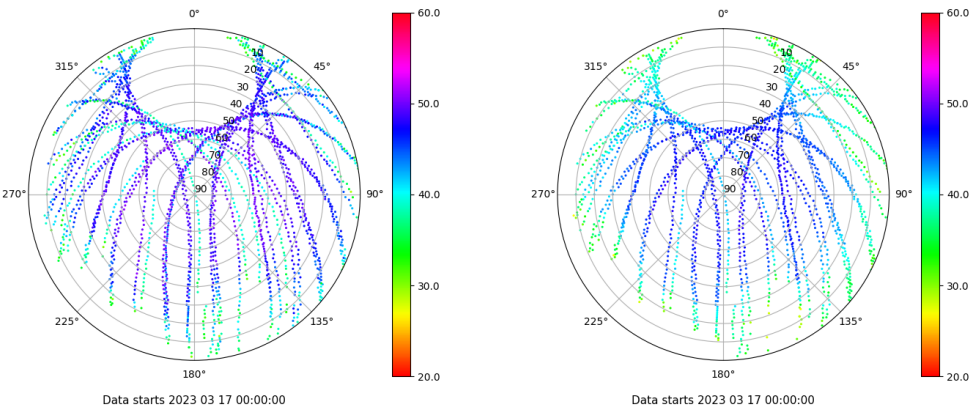
Estacion: EIVI

Fecha: 2023 03 17

Dia del año: 076

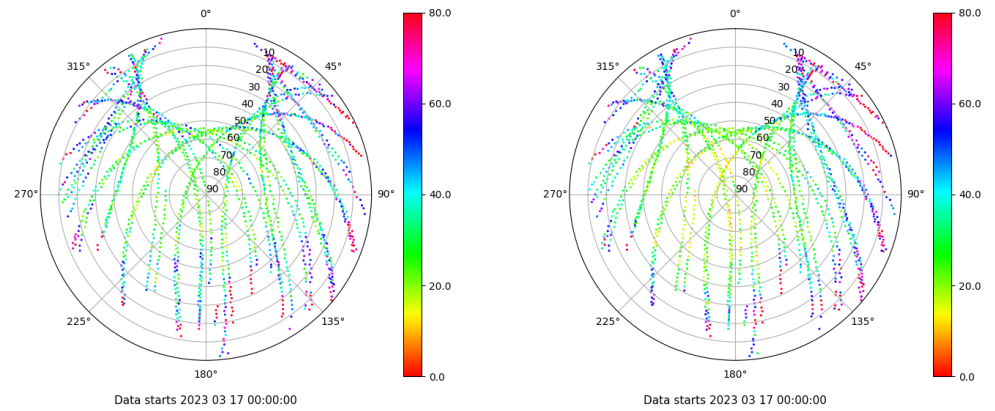
Señal-Ruido GLO L1 y L2

Skyplot for station EIVI. Signal to Noise S1C Data file EIVI00ESP_R_2023076.xtr Skyplot for station EIVI. Signal to Noise S2P Data file EIVI00ESP_R_2023076.xtr



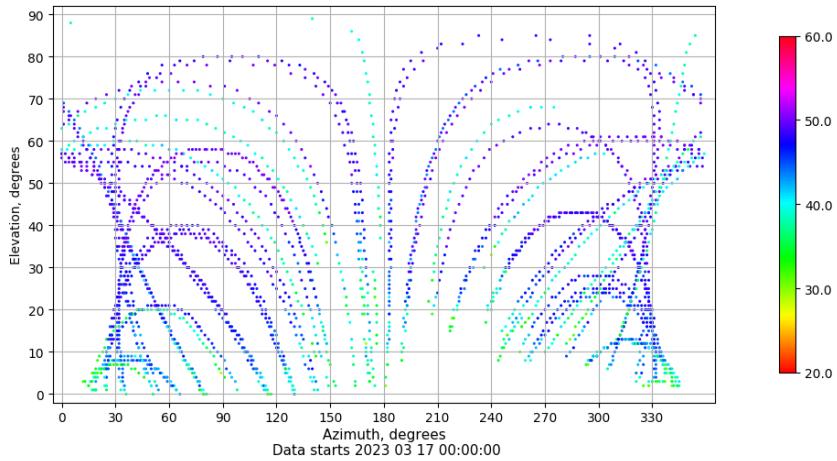
Multipath GLO L1 y L2

Skyplot for station EIVI. Parameter M1C Data file EIVI00ESP_R_2023076.xtr Skyplot for station EIVI. Parameter M2P Data file EIVI00ESP_R_2023076.xtr



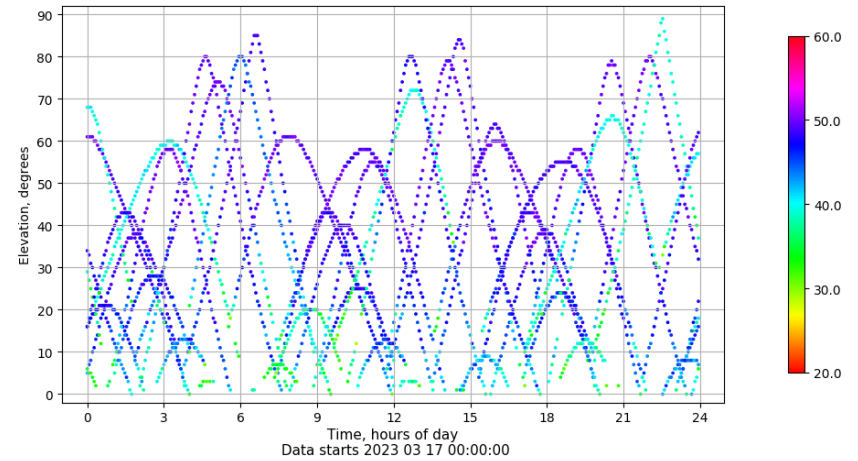
Azimut-Elevacion

Azimuth-elevation plot for station EIVI. Signal to Noise S1C Data file EIVI00ESP_R_2023076.xtr



Tiempo-Elevacion

Time-elevation plot for station EIVI. Signal to Noise S1C Data file EIVI00ESP_R_2023076.xtr



Control de calidad GNSS GAL diario

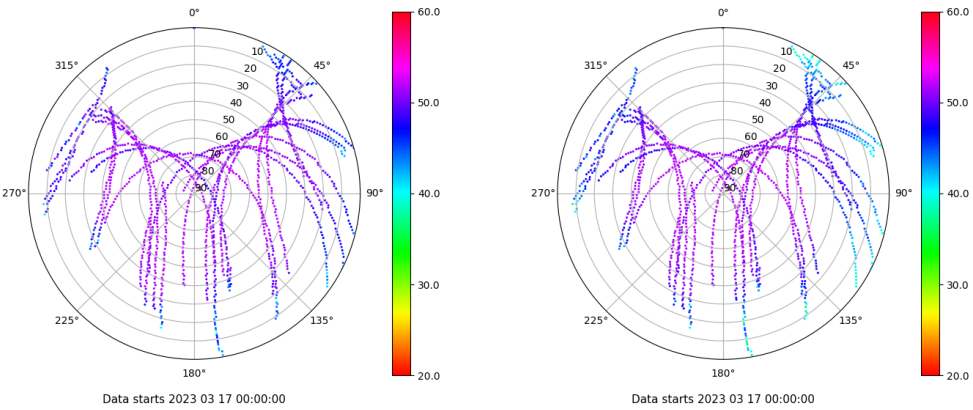
Estacion: EIVI

Fecha: 2023 03 17

Dia del año: 076

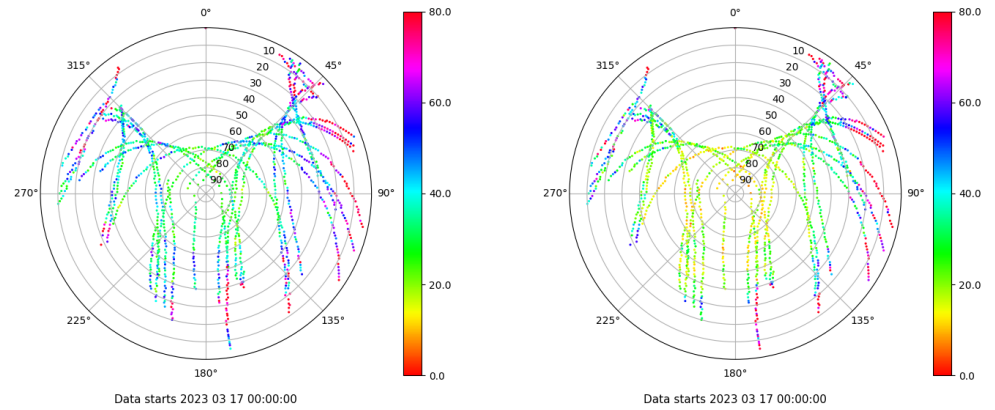
Señal-Ruido GAL E1 y E5

Skyplot for station EIVI. Signal to Noise S1C Data file EIVI00ESP_R_2023076.xtr Skyplot for station EIVI. Signal to Noise S5Q Data file EIVI00ESP_R_2023076.xtr



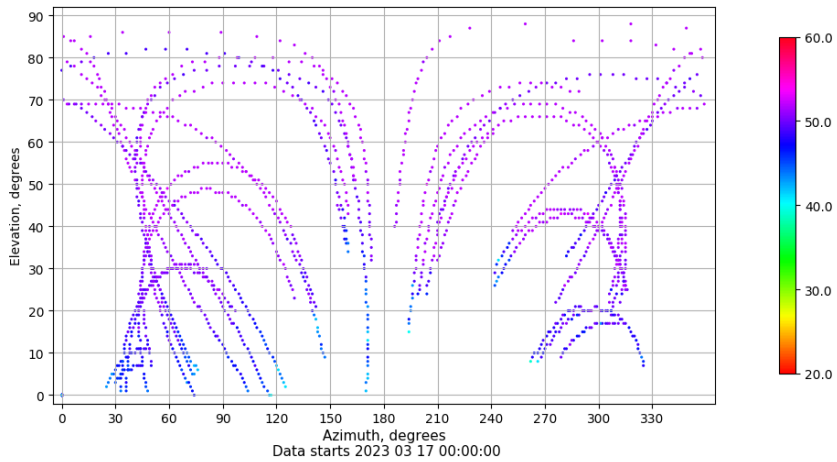
Multipath GAL E1 y E5

Skyplot for station EIVI. Parameter M1C Data file EIVI00ESP_R_2023076.xtr Skyplot for station EIVI. Parameter M5Q Data file EIVI00ESP_R_2023076.xtr



Azimuth-Elevacion

Azimuth-elevation plot for station EIVI. Signal to Noise S1C Data file EIVI00ESP_R_2023076.xtr



Tiempo-Elevacion

Time-elevation plot for station EIVI. Signal to Noise S1C Data file EIVI00ESP_R_2023076.xtr

