

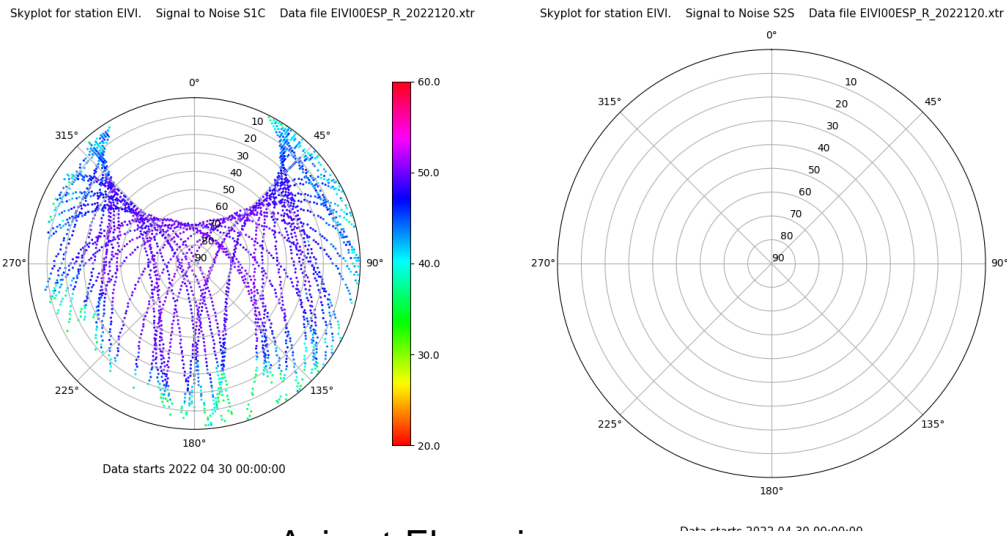
# Control de calidad GNSS GPS diario

Estacion: EIVI

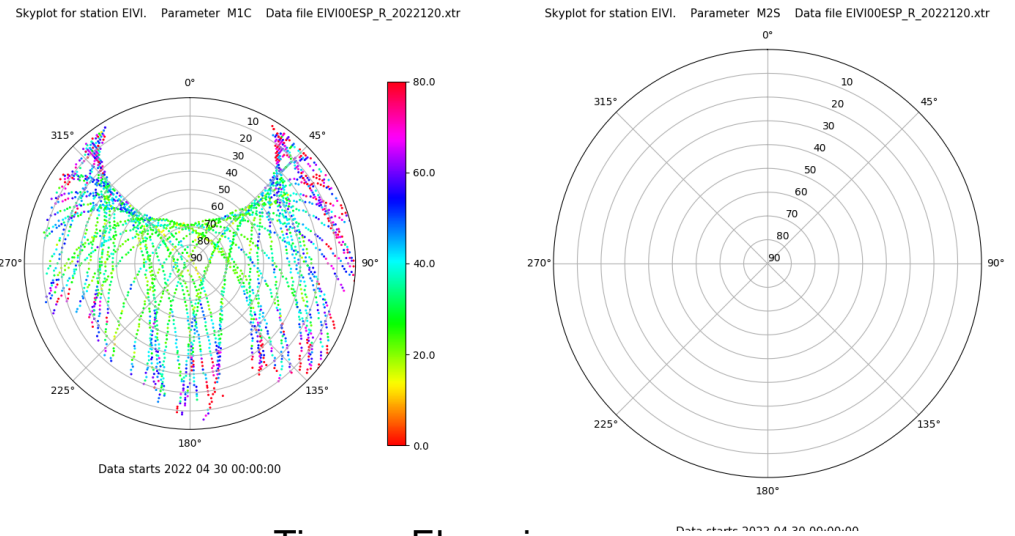
Fecha: 2022 04 30

Dia del año: 120

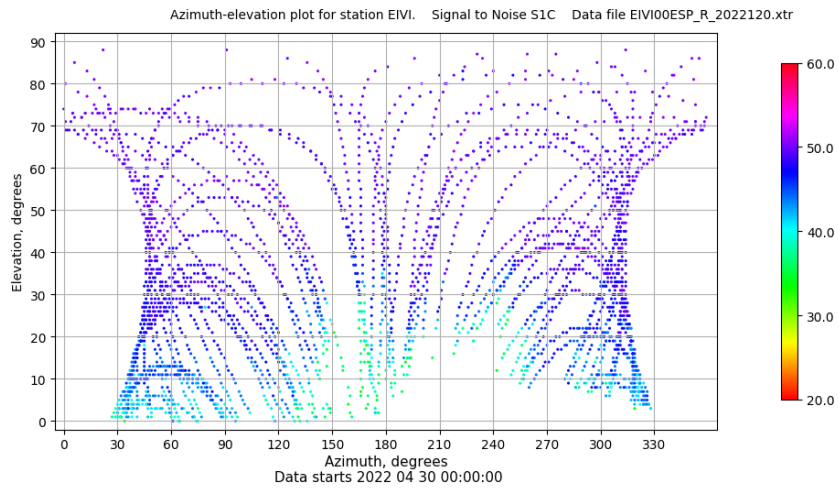
## Señal-Ruido GPS L1 y L2



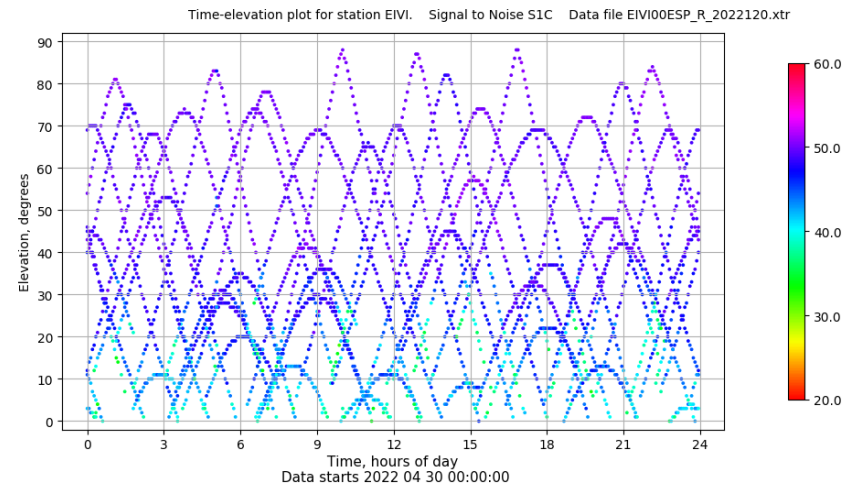
## Multipath GPS L1 y L2



## Azimut-Elevacion



## Tiempo-Elevacion



# Control de calidad GNSS GLO diario

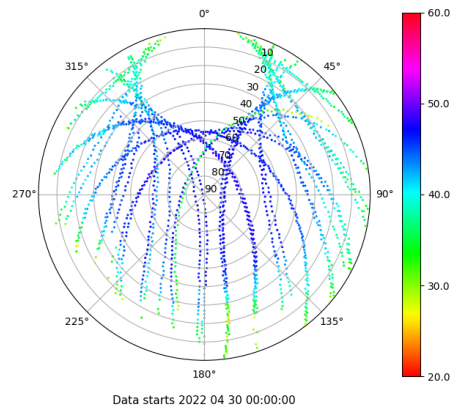
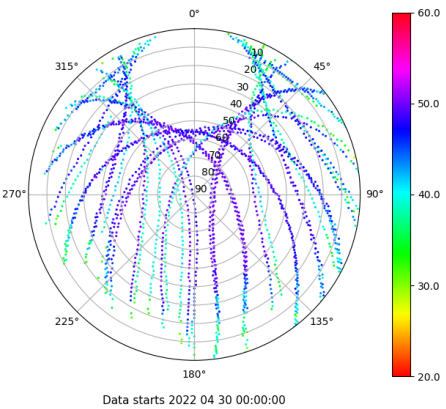
Estacion: EIVI

Fecha: 2022 04 30

Dia del año: 120

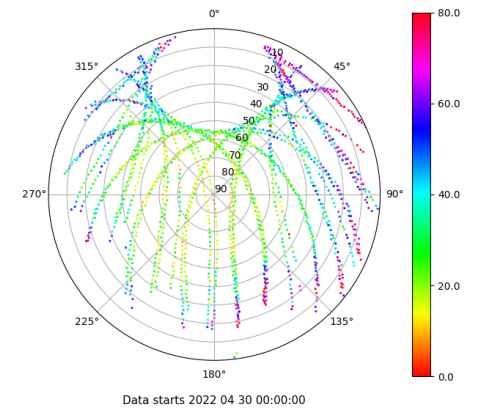
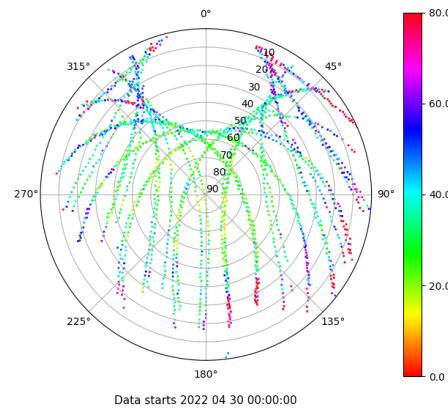
## Señal-Ruido GLO L1 y L2

Skyplot for station EIVI. Signal to Noise S1C Data file EIVI00ESP\_R\_2022120.xtr Skyplot for station EIVI. Signal to Noise S2P Data file EIVI00ESP\_R\_2022120.xtr



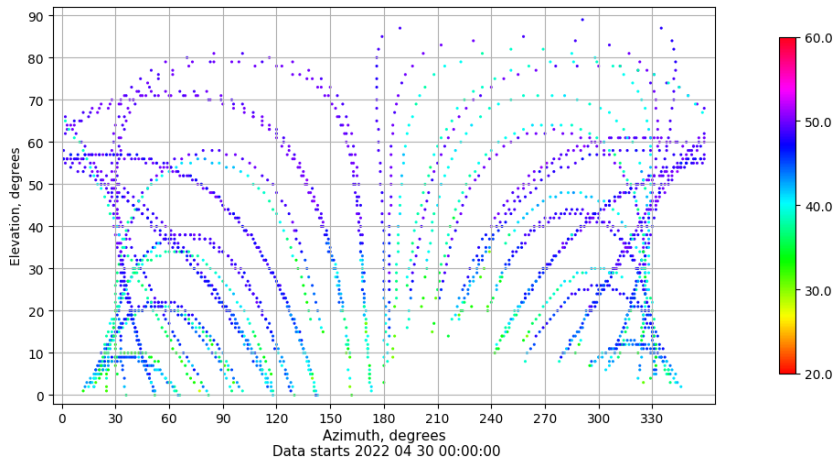
## Multipath GLO L1 y L2

Skyplot for station EIVI. Parameter M1C Data file EIVI00ESP\_R\_2022120.xtr Skyplot for station EIVI. Parameter M2P Data file EIVI00ESP\_R\_2022120.xtr



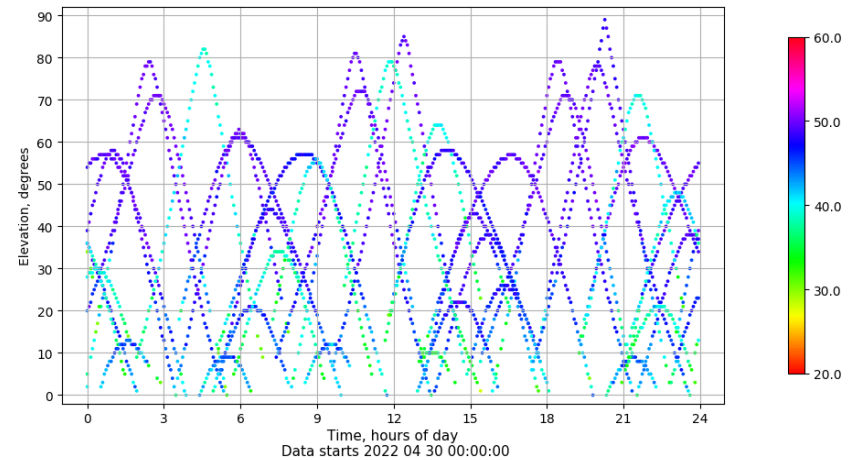
## Azimuth-Elevacion

Azimuth-elevation plot for station EIVI. Signal to Noise S1C Data file EIVI00ESP\_R\_2022120.xtr



## Tiempo-Elevacion

Time-elevation plot for station EIVI. Signal to Noise S1C Data file EIVI00ESP\_R\_2022120.xtr



# Control de calidad GNSS GAL diario

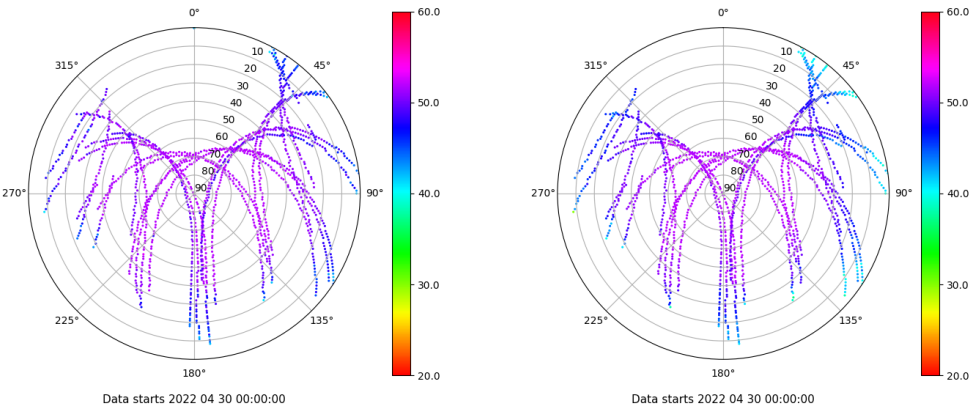
Estacion: EIVI

Fecha: 2022 04 30

Dia del año: 120

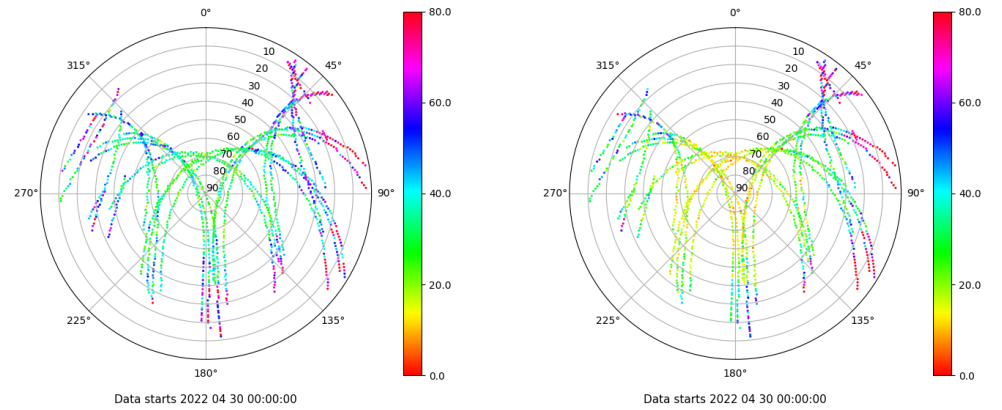
## Señal-Ruido GAL E1 y E5

Skyplot for station EIVI. Signal to Noise S1C Data file EIVI00ESP\_R\_2022120.xtr Skyplot for station EIVI. Signal to Noise S5Q Data file EIVI00ESP\_R\_2022120.xtr



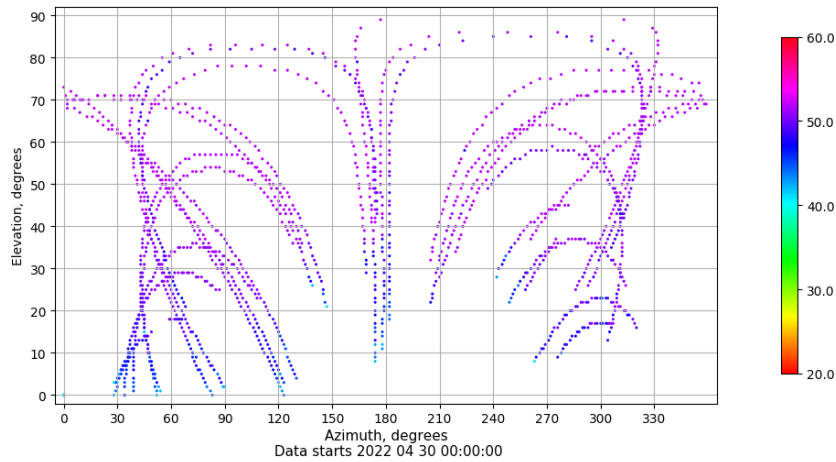
## Multipath GAL E1 y E5

Skyplot for station EIVI. Parameter M1C Data file EIVI00ESP\_R\_2022120.xtr Skyplot for station EIVI. Parameter M5Q Data file EIVI00ESP\_R\_2022120.xtr



## Azimuth-Elevacion

Azimuth-elevation plot for station EIVI. Signal to Noise S1C Data file EIVI00ESP\_R\_2022120.xtr



## Tiempo-Elevacion

Time-elevation plot for station EIVI. Signal to Noise S1C Data file EIVI00ESP\_R\_2022120.xtr

