

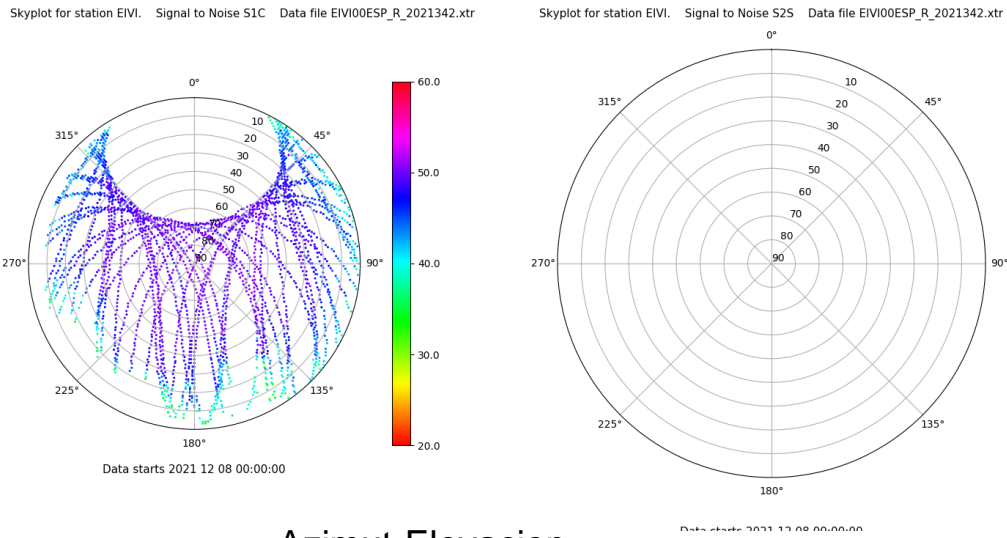
# Control de calidad GNSS GPS diario

Estacion: EIVI

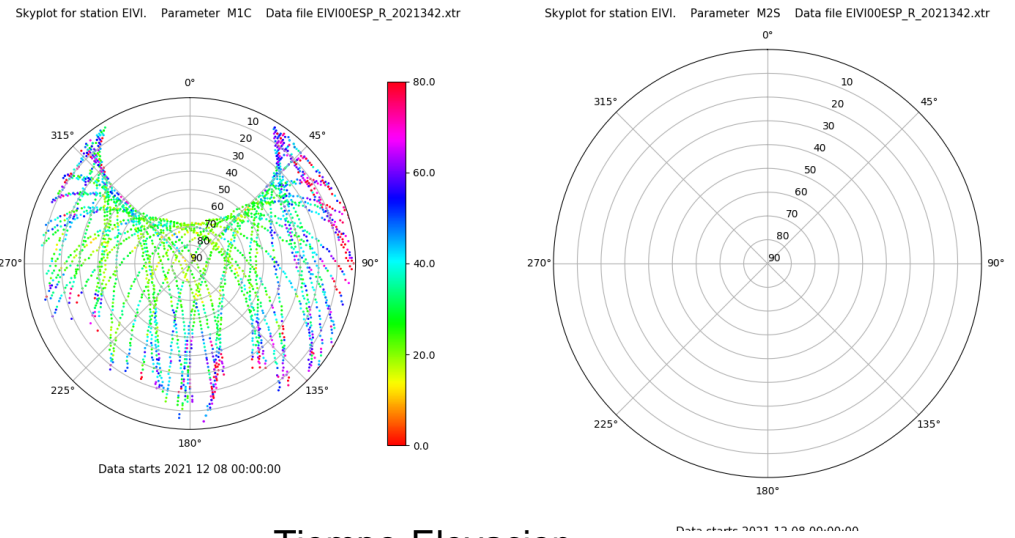
Fecha: 2021 12 08

Dia del año: 342

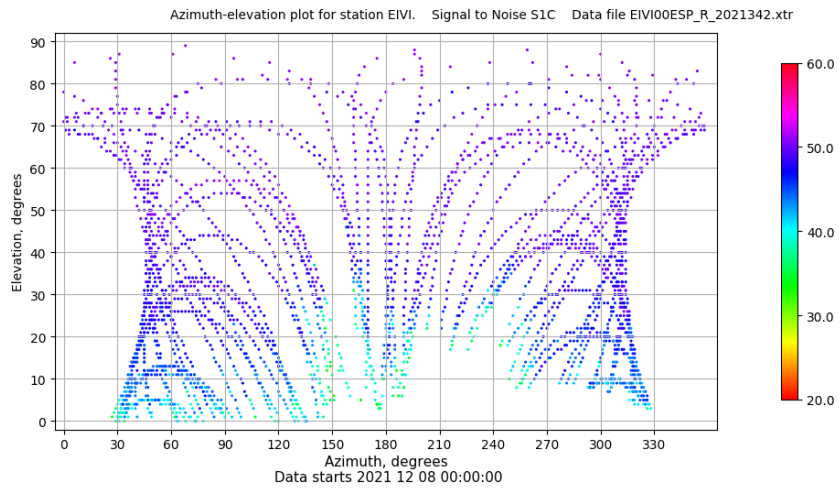
## Señal-Ruido GPS L1 y L2



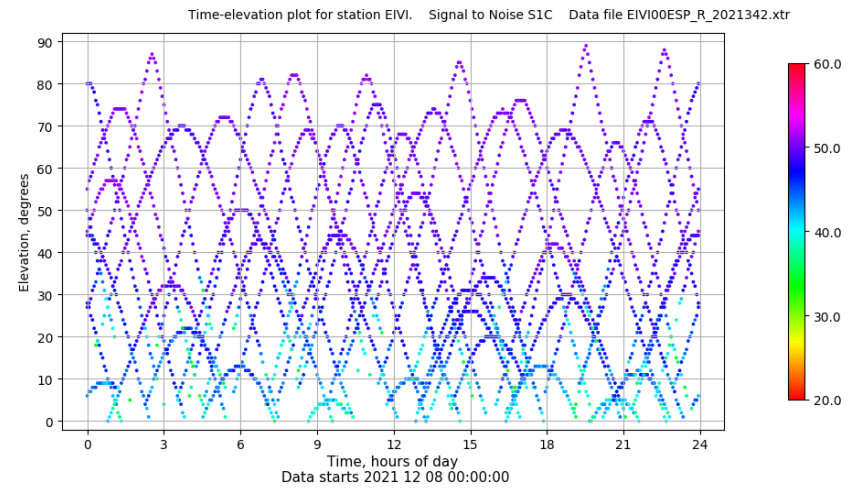
## Multipath GPS L1 y L2



## Azimut-Elevacion



## Tiempo-Elevacion

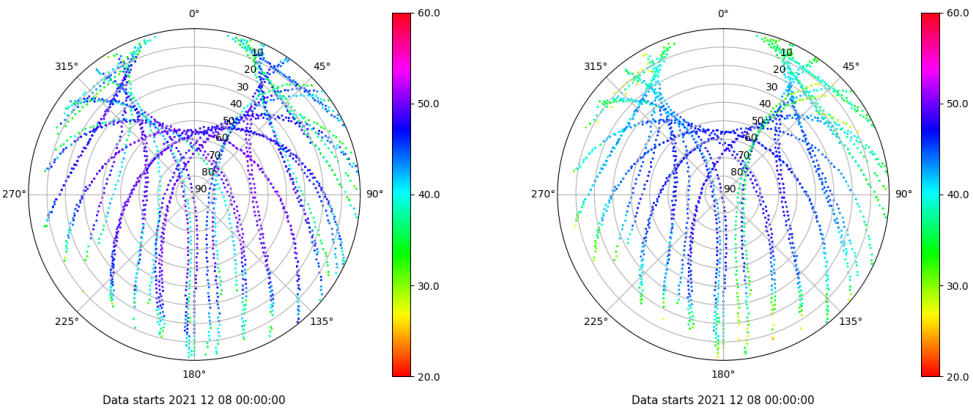


# Control de calidad GNSS GLO diario

Estacion: EIVI  
 Fecha: 2021 12 08  
 Dia del año: 342

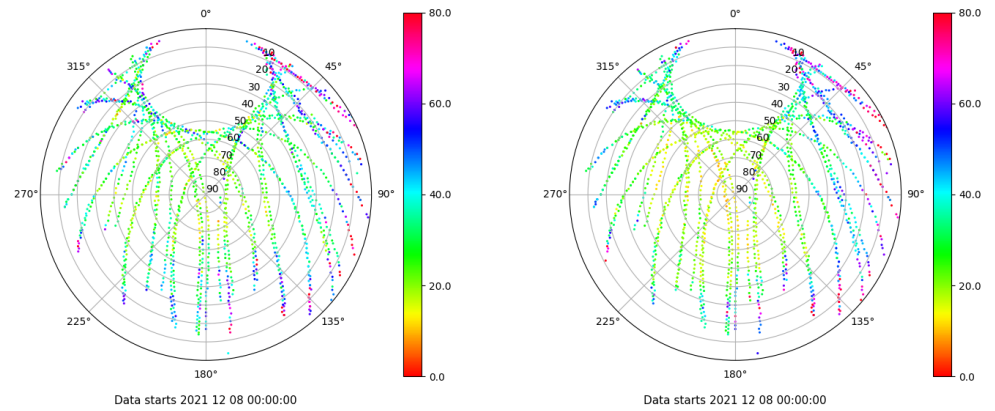
## Señal-Ruido GLO L1 y L2

Skyplot for station EIVI. Signal to Noise S1C Data file EIVI00ESP\_R\_2021342.xtr Skyplot for station EIVI. Signal to Noise S2P Data file EIVI00ESP\_R\_2021342.xtr



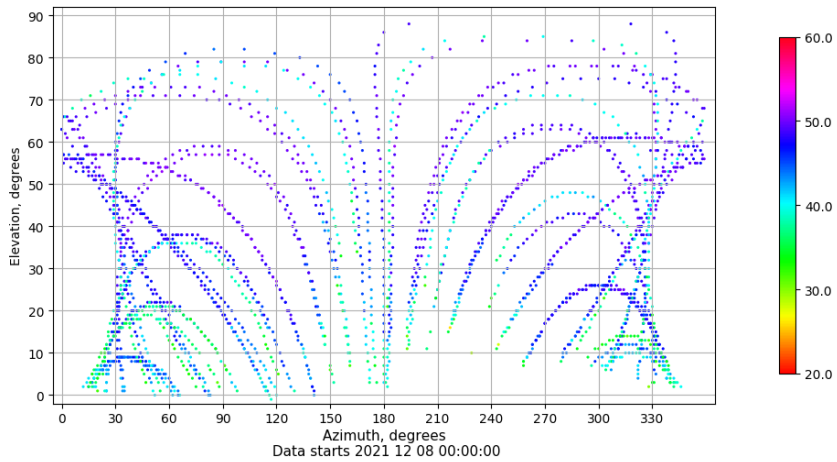
## Multipath GLO L1 y L2

Skyplot for station EIVI. Parameter M1C Data file EIVI00ESP\_R\_2021342.xtr Skyplot for station EIVI. Parameter M2P Data file EIVI00ESP\_R\_2021342.xtr



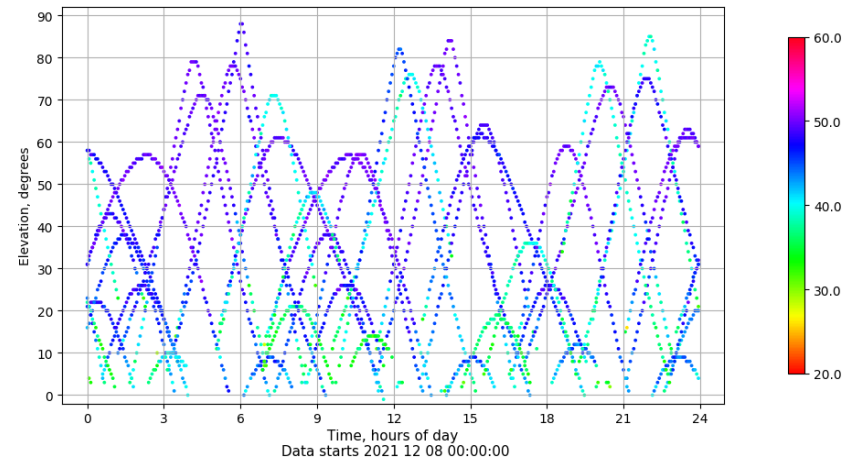
## Azimuth-Elevacion

Azimuth-elevation plot for station EIVI. Signal to Noise S1C Data file EIVI00ESP\_R\_2021342.xtr



## Tiempo-Elevacion

Time-elevation plot for station EIVI. Signal to Noise S1C Data file EIVI00ESP\_R\_2021342.xtr



# Control de calidad GNSS GAL diario

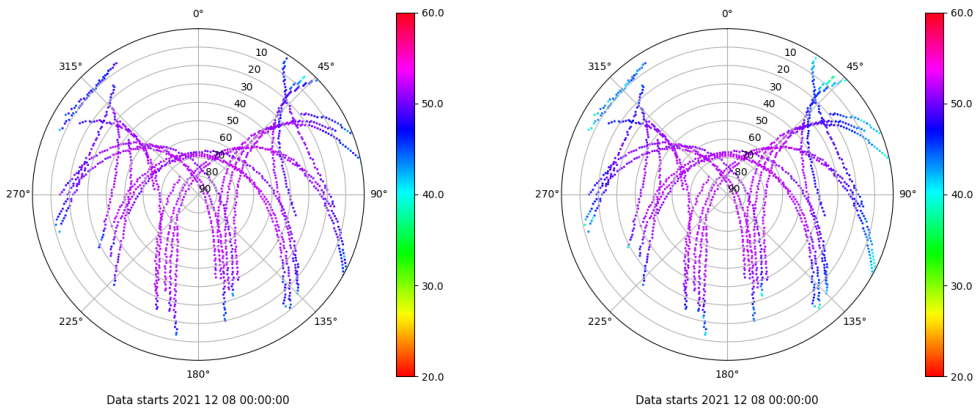
Estacion: EIVI

Fecha: 2021 12 08

Dia del año: 342

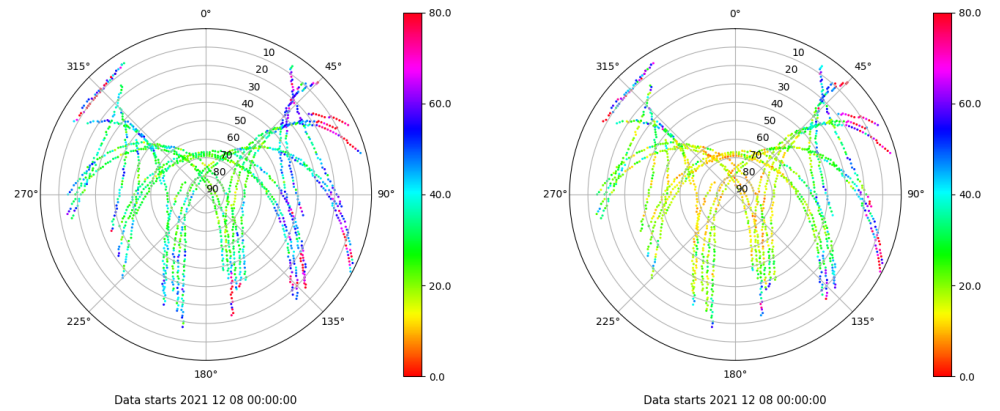
## Señal-Ruido GAL E1 y E5

Skyplot for station EIVI. Signal to Noise S1C Data file EIVI00ESP\_R\_2021342.xtr Skyplot for station EIVI. Signal to Noise S5Q Data file EIVI00ESP\_R\_2021342.xtr



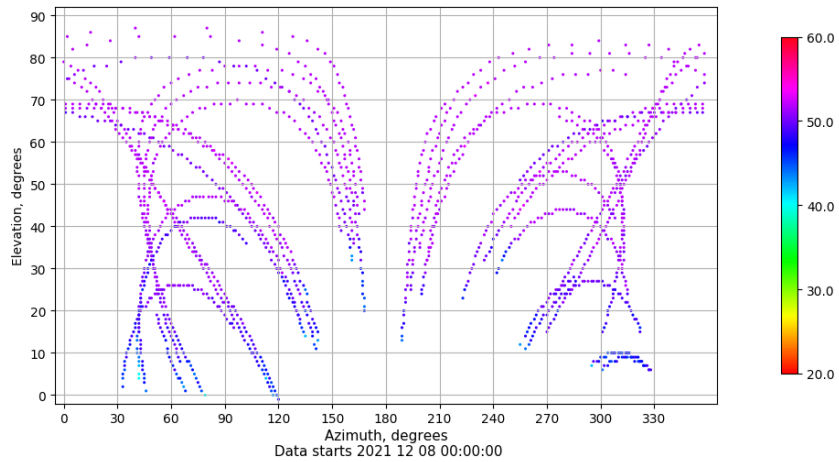
## Multipath GAL E1 y E5

Skyplot for station EIVI. Parameter M1C Data file EIVI00ESP\_R\_2021342.xtr Skyplot for station EIVI. Parameter M5Q Data file EIVI00ESP\_R\_2021342.xtr



## Azimuth-Elevacion

Azimuth-elevation plot for station EIVI. Signal to Noise S1C Data file EIVI00ESP\_R\_2021342.xtr



## Tiempo-Elevacion

Time-elevation plot for station EIVI. Signal to Noise S1C Data file EIVI00ESP\_R\_2021342.xtr

