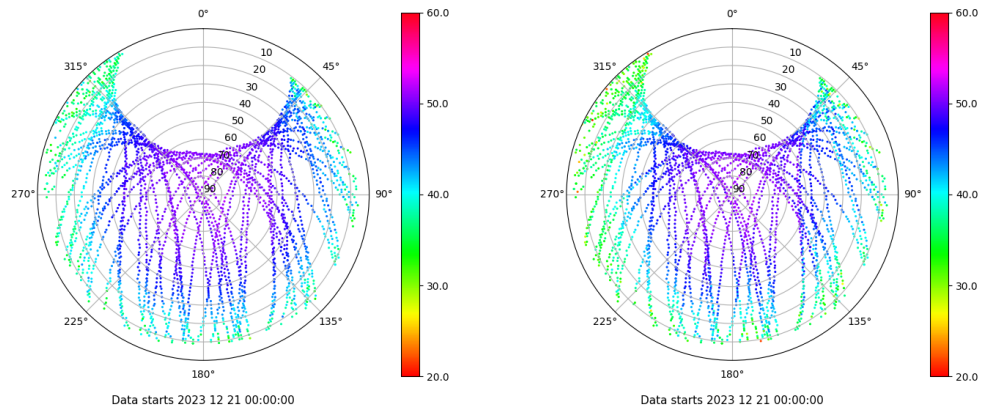


Control de calidad GNSS GPS diario

Estacion: CLTR
 Fecha: 2023 12 21
 Dia del año: 355

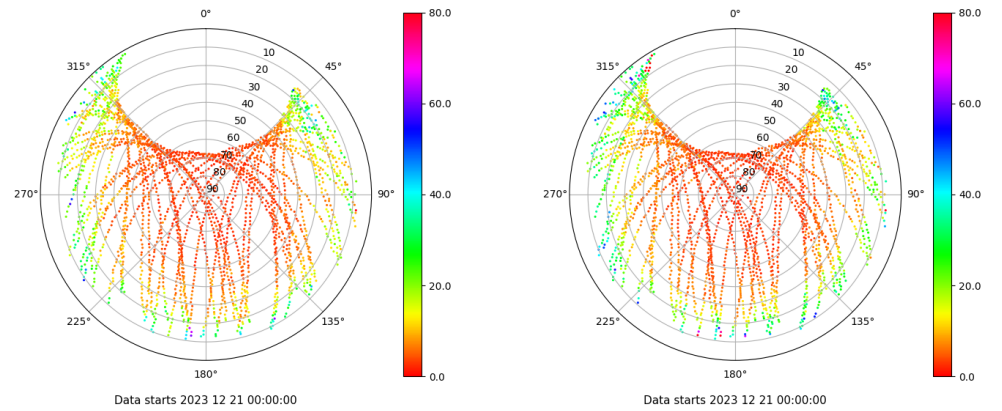
Señal-Ruido GPS L1 y L2

Skyplot for station CLTR. Signal to Noise S1C Data file CLTR00ESP_R_2023355.xtr Skyplot for station CLTR. Signal to Noise S2W Data file CLTR00ESP_R_2023355.xtr



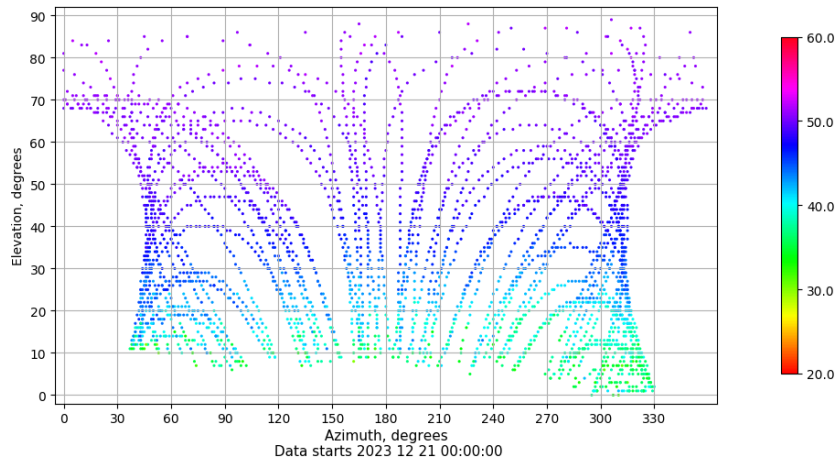
Multipath GPS L1 y L2

Skyplot for station CLTR. Parameter M1C Data file CLTR00ESP_R_2023355.xtr Skyplot for station CLTR. Parameter M2W Data file CLTR00ESP_R_2023355.xtr



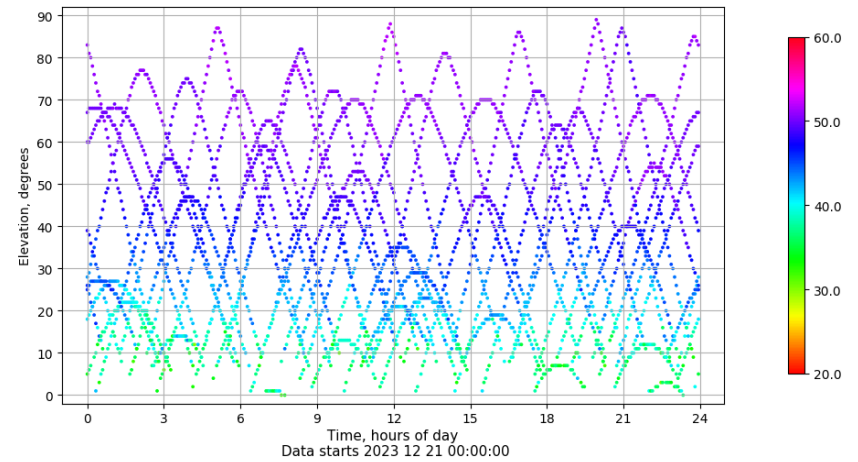
Azimuth-Elevacion

Azimuth-elevation plot for station CLTR. Signal to Noise S1C Data file CLTR00ESP_R_2023355.xtr



Tiempo-Elevacion

Time-elevation plot for station CLTR. Signal to Noise S1C Data file CLTR00ESP_R_2023355.xtr

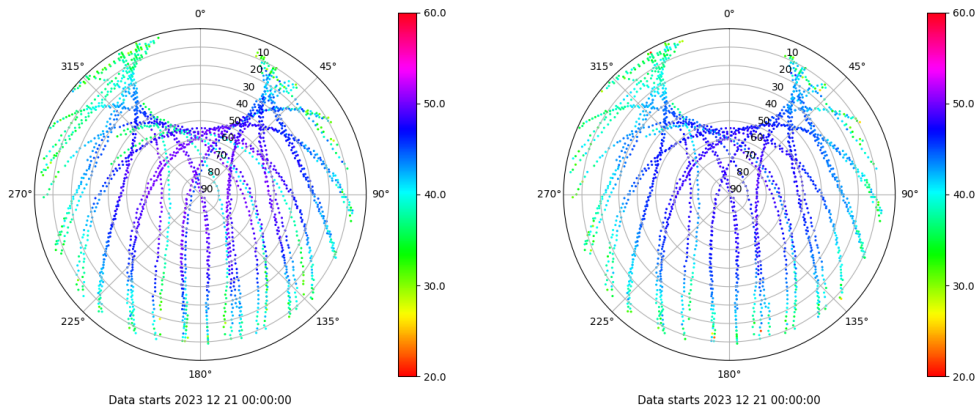


Control de calidad GNSS GLO diario

Estacion: CLTR
 Fecha: 2023 12 21
 Dia del año: 355

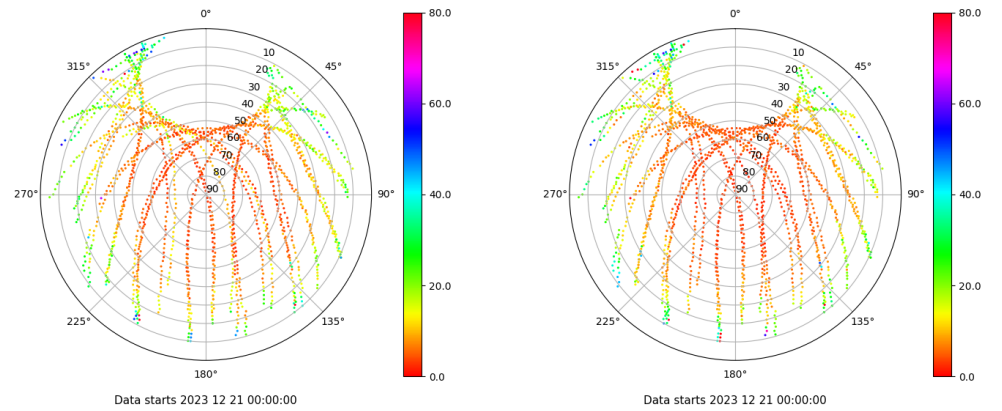
Señal-Ruido GLO L1 y L2

Skyplot for station CLTR. Signal to Noise S1C Data file CLTR00ESP_R_2023355.xtr Skyplot for station CLTR. Signal to Noise S2P Data file CLTR00ESP_R_2023355.xtr



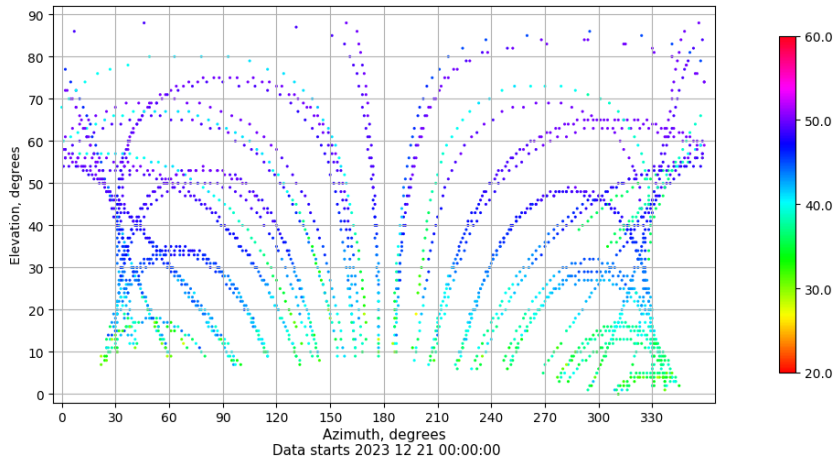
Multipath GLO L1 y L2

Skyplot for station CLTR. Parameter M1C Data file CLTR00ESP_R_2023355.xtr Skyplot for station CLTR. Parameter M2P Data file CLTR00ESP_R_2023355.xtr



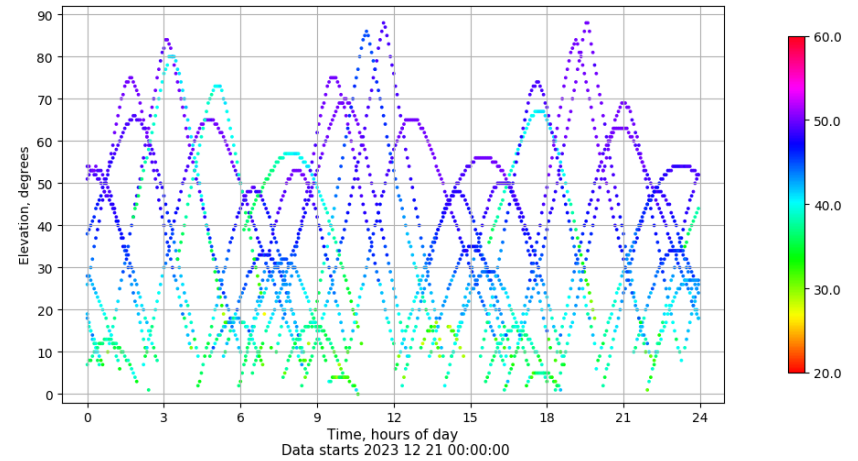
Azimuth-Elevacion

Azimuth-elevation plot for station CLTR. Signal to Noise S1C Data file CLTR00ESP_R_2023355.xtr



Tiempo-Elevacion

Time-elevation plot for station CLTR. Signal to Noise S1C Data file CLTR00ESP_R_2023355.xtr



Control de calidad GNSS GAL diario

Estacion: CLTR

Fecha: 2023 12 21

Día del año: 355

Señal-Ruido GAL E1 y E5

Multipath GAL E1 y E5

No existen gráficos para GAL