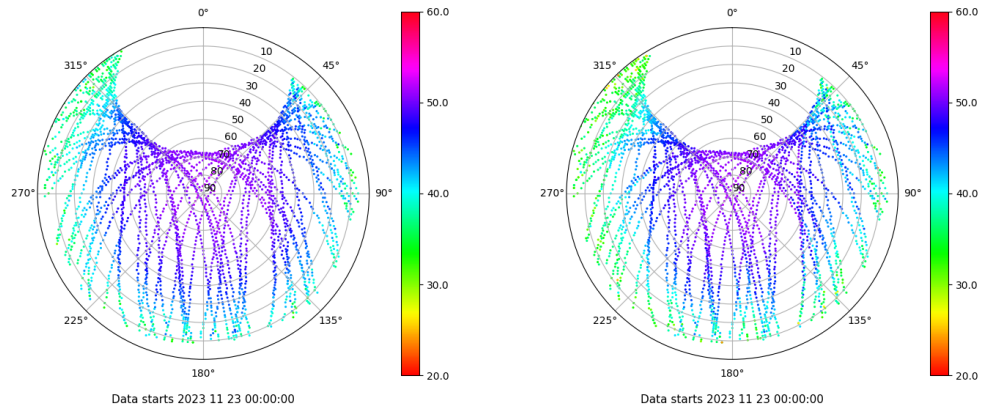


# Control de calidad GNSS GPS diario

Estacion: CLTR  
 Fecha: 2023 11 23  
 Dia del año: 327

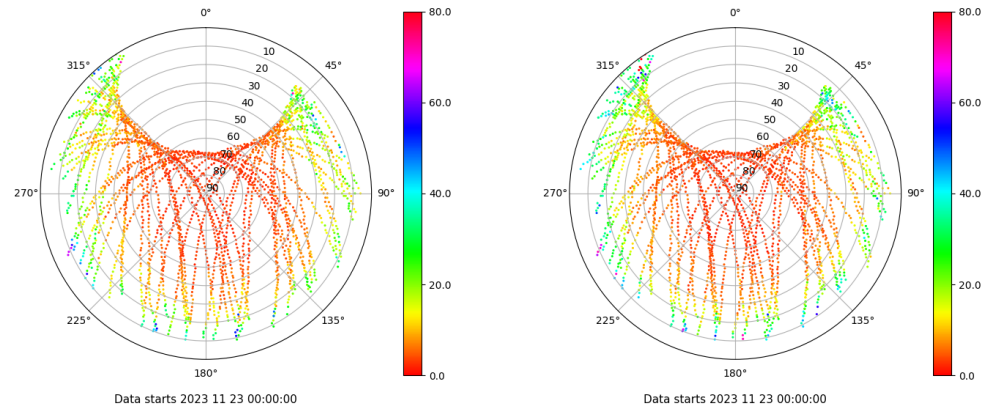
## Señal-Ruido GPS L1 y L2

Skyplot for station CLTR. Signal to Noise S1C Data file CLTR00ESP\_R\_2023327.xtr Skyplot for station CLTR. Signal to Noise S2W Data file CLTR00ESP\_R\_2023327.xtr



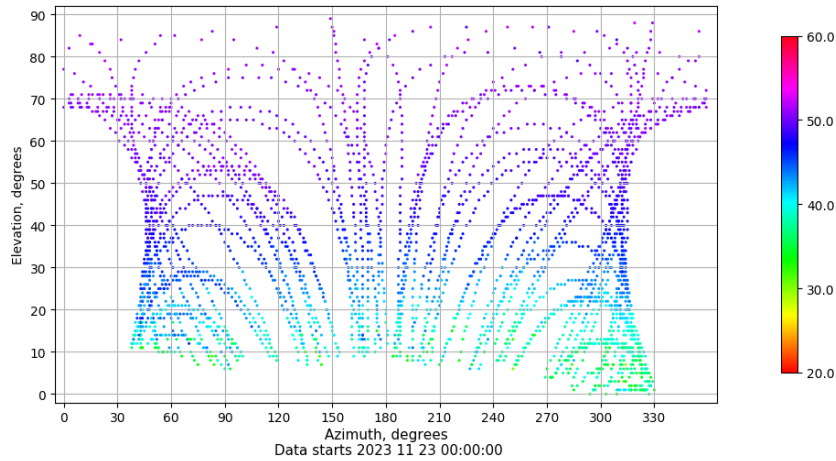
## Multipath GPS L1 y L2

Skyplot for station CLTR. Parameter M1C Data file CLTR00ESP\_R\_2023327.xtr Skyplot for station CLTR. Parameter M2W Data file CLTR00ESP\_R\_2023327.xtr



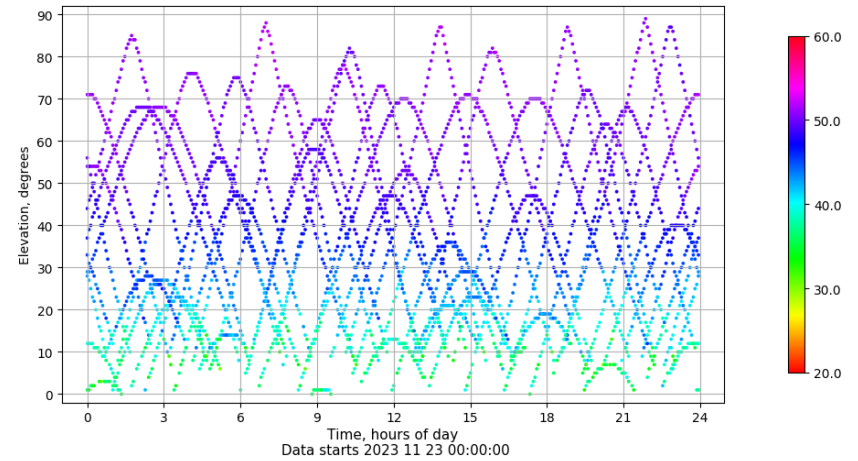
## Azimuth-Elevacion

Azimuth-elevation plot for station CLTR. Signal to Noise S1C Data file CLTR00ESP\_R\_2023327.xtr



## Tiempo-Elevacion

Time-elevation plot for station CLTR. Signal to Noise S1C Data file CLTR00ESP\_R\_2023327.xtr

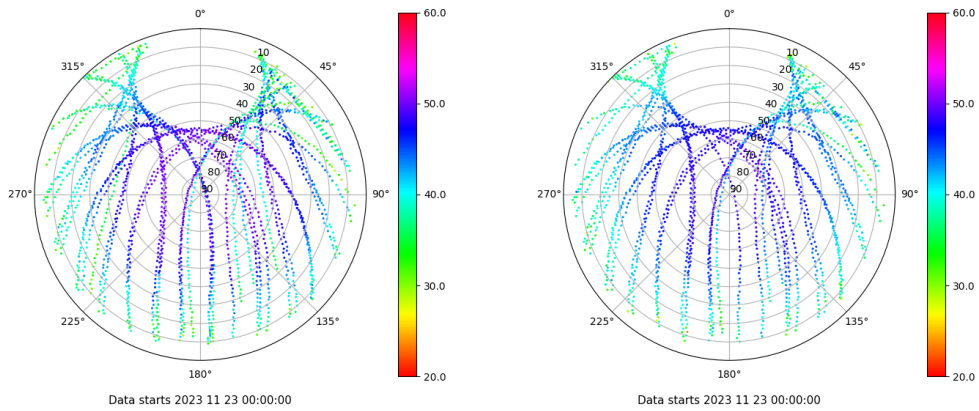


# Control de calidad GNSS GLO diario

Estacion: CLTR  
 Fecha: 2023 11 23  
 Dia del año: 327

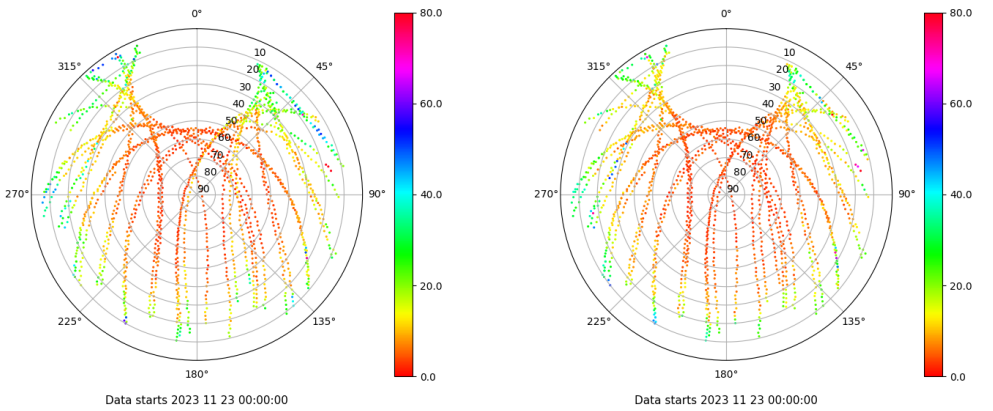
## Señal-Ruido GLO L1 y L2

Skyplot for station CLTR. Signal to Noise S1C Data file CLTR00ESP\_R\_2023327.xtr Skyplot for station CLTR. Signal to Noise S2P Data file CLTR00ESP\_R\_2023327.xtr



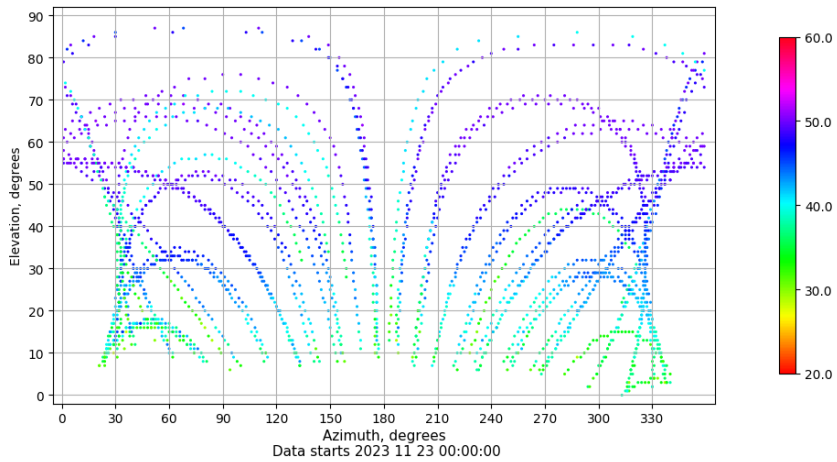
## Multipath GLO L1 y L2

Skyplot for station CLTR. Parameter M1C Data file CLTR00ESP\_R\_2023327.xtr Skyplot for station CLTR. Parameter M2P Data file CLTR00ESP\_R\_2023327.xtr



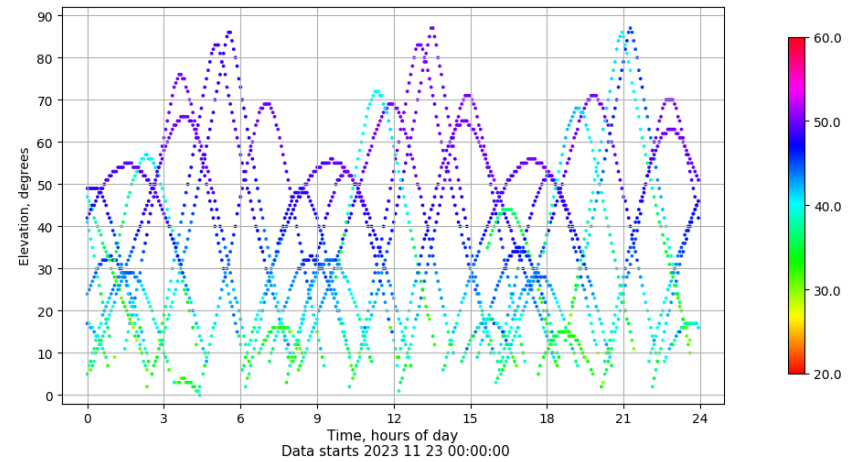
## Azimuth-Elevacion

Azimuth-elevation plot for station CLTR. Signal to Noise S1C Data file CLTR00ESP\_R\_2023327.xtr



## Tiempo-Elevacion

Time-elevation plot for station CLTR. Signal to Noise S1C Data file CLTR00ESP\_R\_2023327.xtr



## Control de calidad GNSS GAL diario

Estacion: CLTR

Fecha: 2023 11 23

Día del año: 327

Señal-Ruido GAL E1 y E5

Multipath GAL E1 y E5

No existen gráficos para GAL