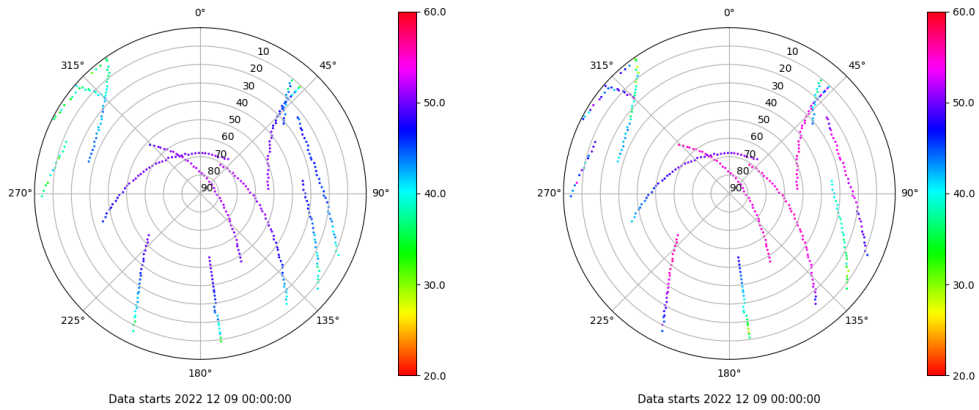


# Control de calidad GNSS GPS diario

Estacion: CLTR  
 Fecha: 2022 12 09  
 Dia del año: 343

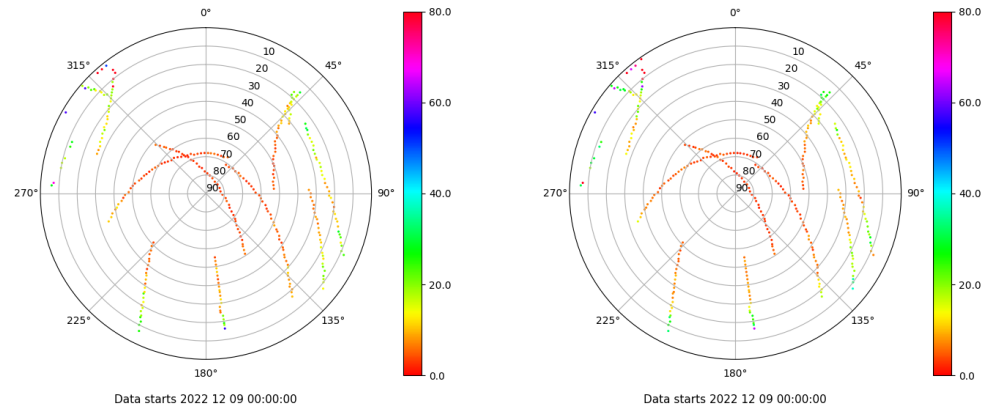
## Señal-Ruido GPS L1 y L2

Skyplot for station CLTR. Signal to Noise S1C Data file CLTR00ESP\_R\_2022343.xtr Skyplot for station CLTR. Signal to Noise S2W Data file CLTR00ESP\_R\_2022343.xtr



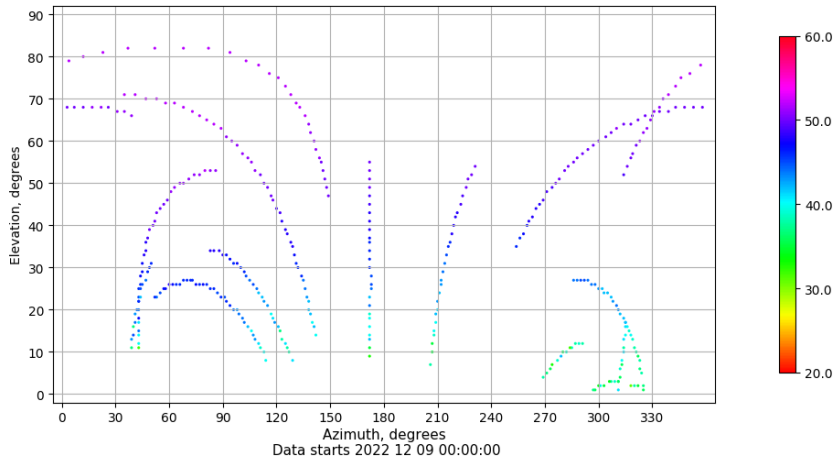
## Multipath GPS L1 y L2

Skyplot for station CLTR. Parameter M1C Data file CLTR00ESP\_R\_2022343.xtr Skyplot for station CLTR. Parameter M2W Data file CLTR00ESP\_R\_2022343.xtr



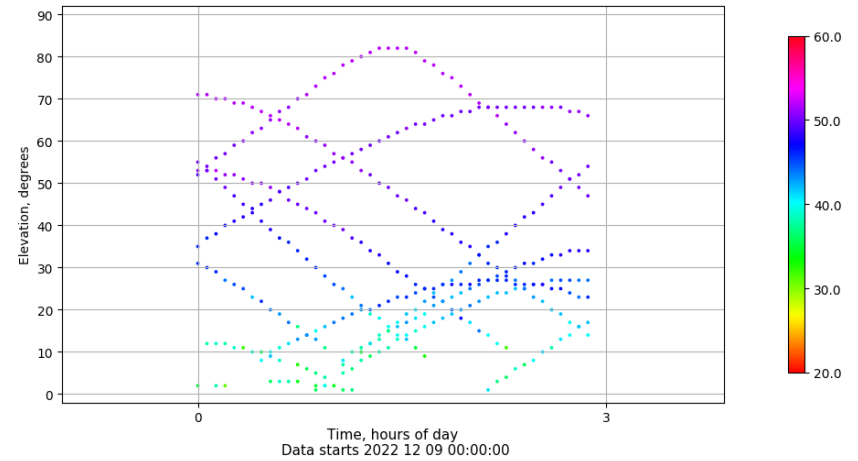
## Azimuth-Elevacion

Azimuth-elevation plot for station CLTR. Signal to Noise S1C Data file CLTR00ESP\_R\_2022343.xtr



## Tiempo-Elevacion

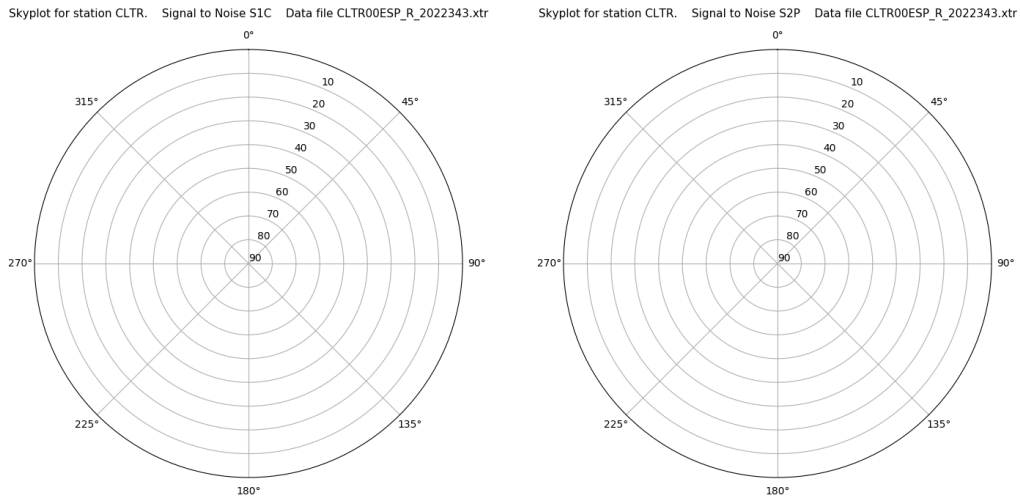
Time-elevation plot for station CLTR. Signal to Noise S1C Data file CLTR00ESP\_R\_2022343.xtr



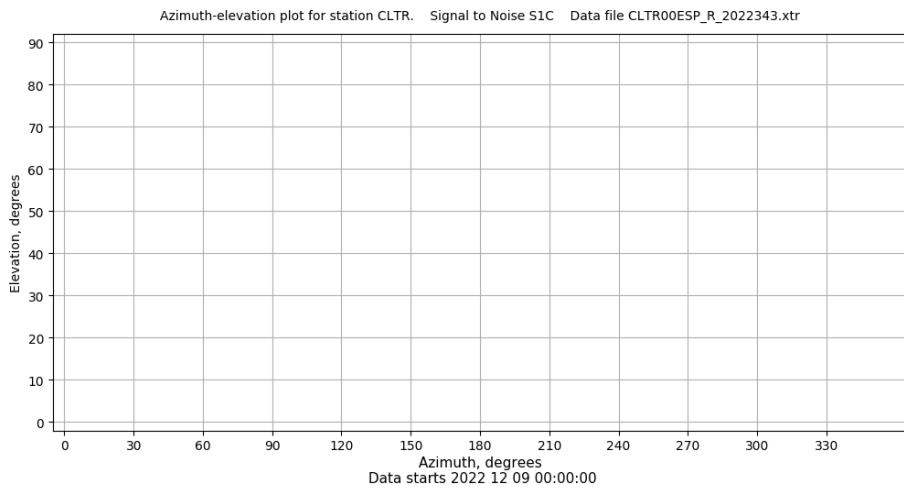
# Control de calidad GNSS GLO diario

Estacion: CLTR  
 Fecha: 2022 12 09  
 Dia del año: 343

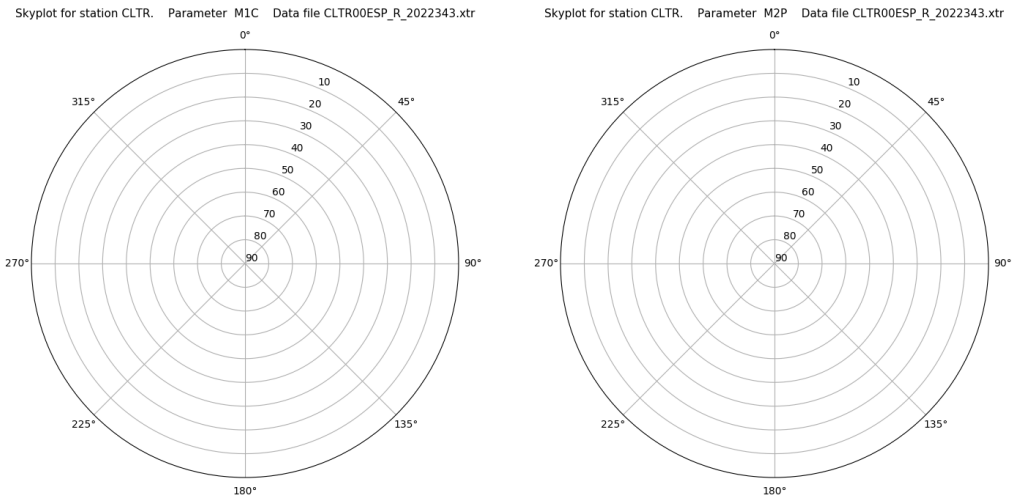
## Señal-Ruido GLO L1 y L2



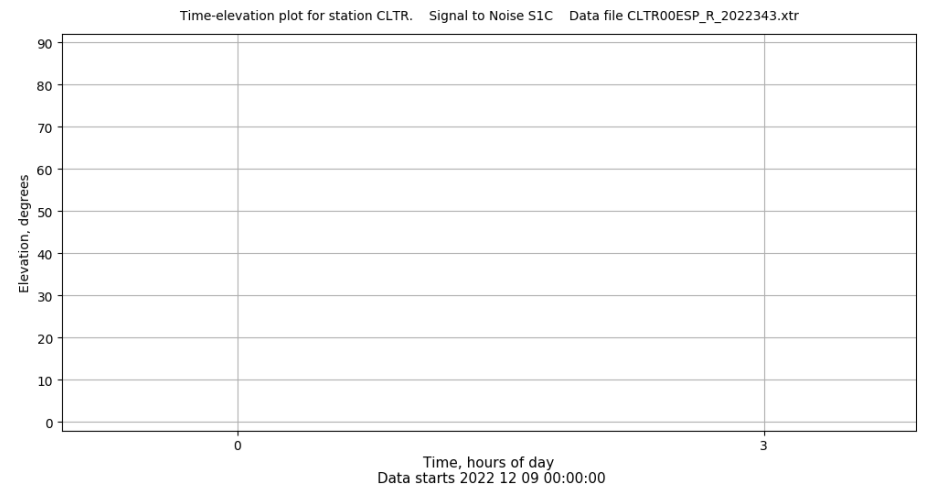
## Azimut-Elevacion



## Multipath GLO L1 y L2



## Tiempo-Elevacion



## Control de calidad GNSS GAL diario

Estacion: CLTR

Fecha: 2022 12 09

Día del año: 343

Señal-Ruido GAL E1 y E5

Multipath GAL E1 y E5

No existen gráficos para GAL