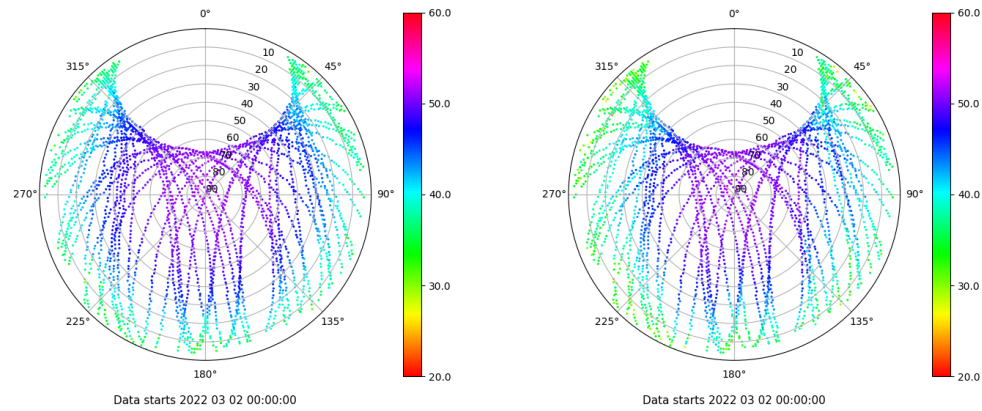


# Control de calidad GNSS GPS diario

Estacion: CARG  
 Fecha: 2022 03 02  
 Dia del año: 061

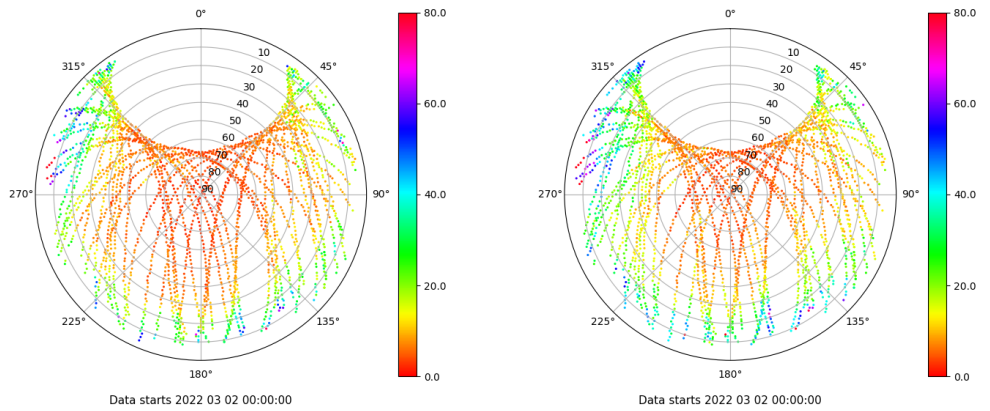
## Señal-Ruido GPS L1 y L2

Skyplot for station CARG. Signal to Noise S1C Data file CARG00ESP\_R\_2022061.xtr Skyplot for station CARG. Signal to Noise S2W Data file CARG00ESP\_R\_2022061.xtr



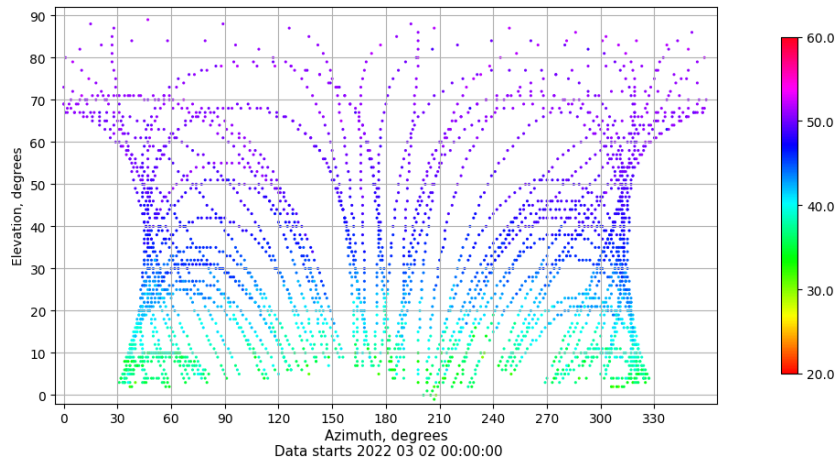
## Multipath GPS L1 y L2

Skyplot for station CARG. Parameter M1C Data file CARG00ESP\_R\_2022061.xtr Skyplot for station CARG. Parameter M2W Data file CARG00ESP\_R\_2022061.xtr



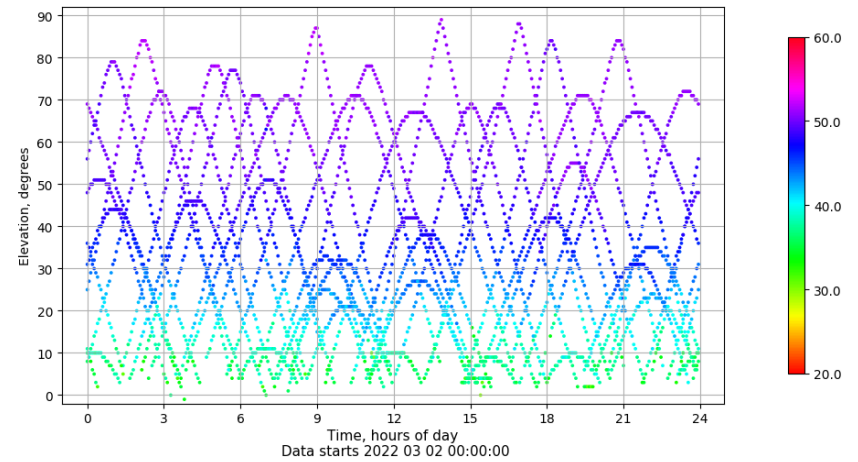
## Azimuth-Elevacion

Azimuth-elevation plot for station CARG. Signal to Noise S1C Data file CARG00ESP\_R\_2022061.xtr



## Tiempo-Elevacion

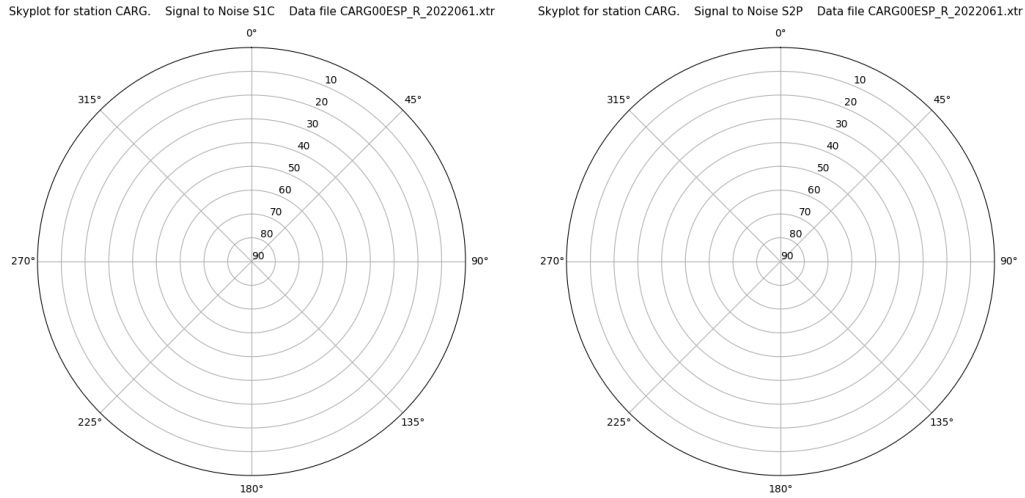
Time-elevation plot for station CARG. Signal to Noise S1C Data file CARG00ESP\_R\_2022061.xtr



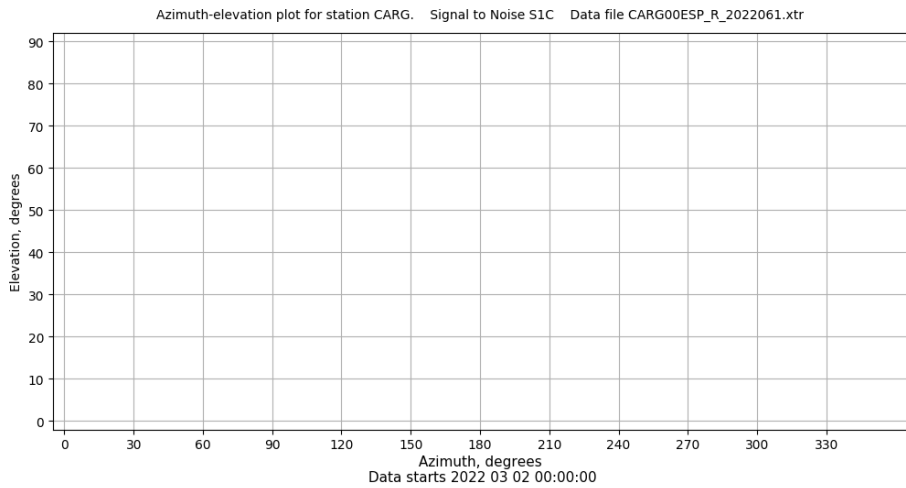
# Control de calidad GNSS GLO diario

Estacion: CARG  
 Fecha: 2022 03 02  
 Dia del año: 061

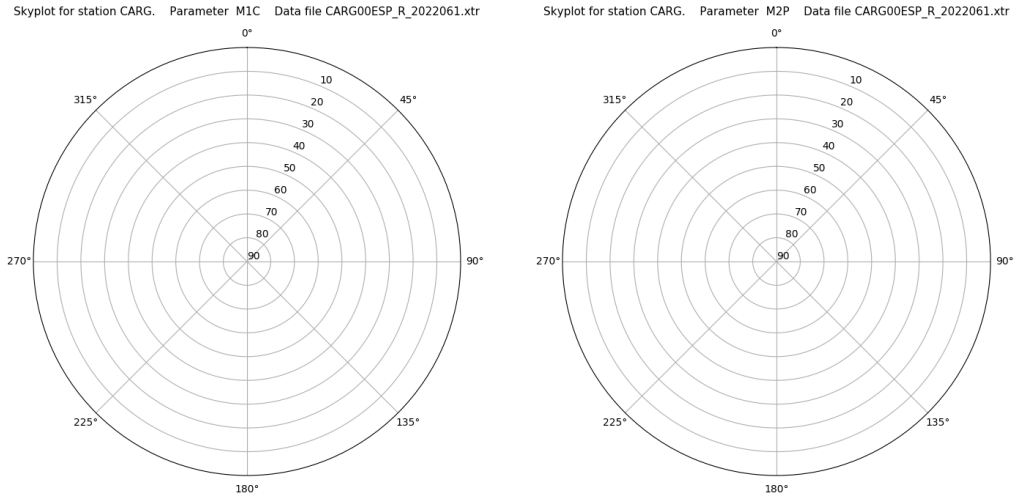
## Señal-Ruido GLO L1 y L2



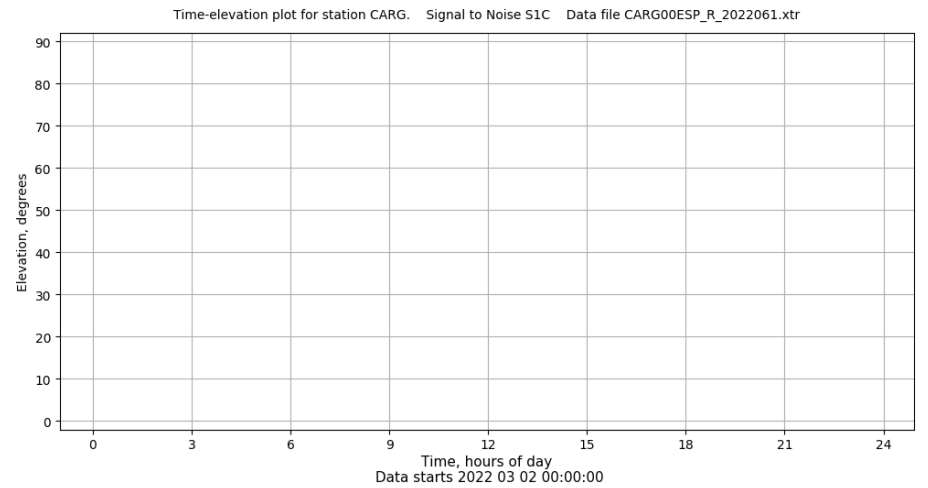
## Azimut-Elevacion



## Multipath GLO L1 y L2



## Tiempo-Elevacion

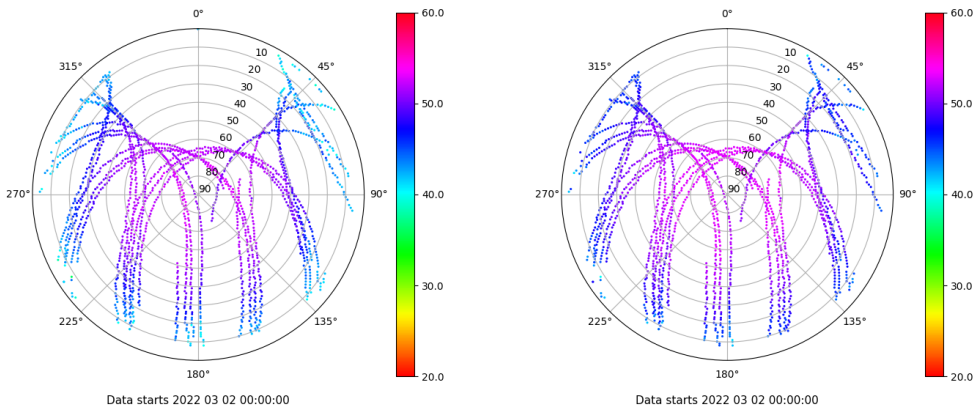


# Control de calidad GNSS GAL diario

Estacion: CARG  
 Fecha: 2022 03 02  
 Dia del año: 061

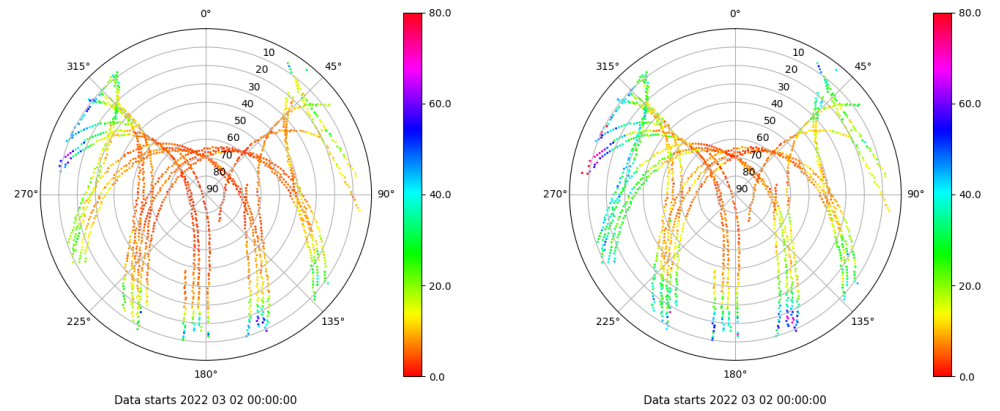
## Señal-Ruido GAL E1 y E5

Skyplot for station CARG. Signal to Noise S1C Data file CARG00ESP\_R\_2022061.xtr Skyplot for station CARG. Signal to Noise S5Q Data file CARG00ESP\_R\_2022061.xtr



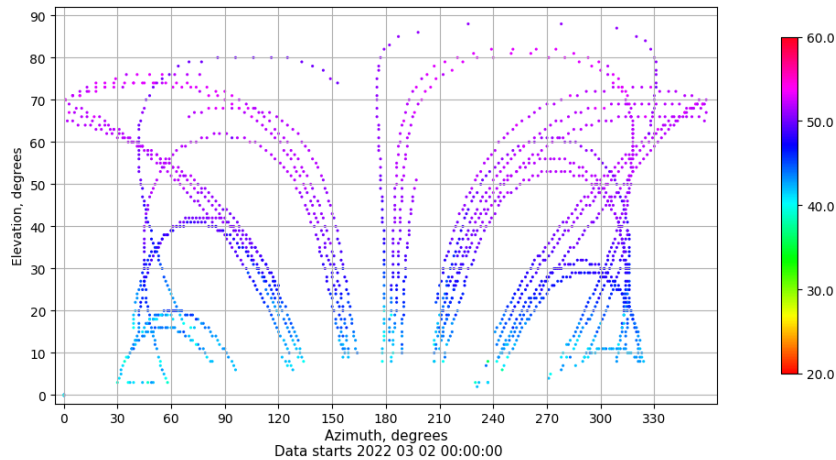
## Multipath GAL E1 y E5

Skyplot for station CARG. Parameter M1C Data file CARG00ESP\_R\_2022061.xtr Skyplot for station CARG. Parameter M5Q Data file CARG00ESP\_R\_2022061.xtr



## Azimuth-Elevacion

Azimuth-elevation plot for station CARG. Signal to Noise S1C Data file CARG00ESP\_R\_2022061.xtr



## Tiempo-Elevacion

Time-elevation plot for station CARG. Signal to Noise S1C Data file CARG00ESP\_R\_2022061.xtr

