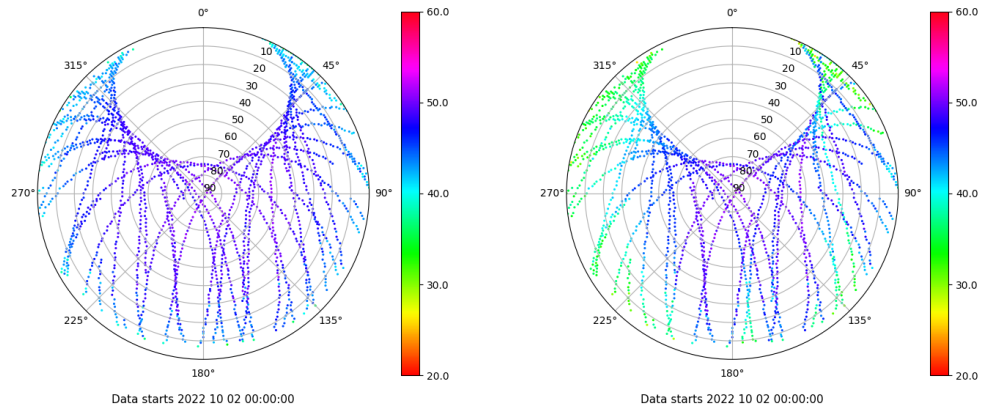


# Control de calidad GNSS GPS diario

Estacion: CANT  
 Fecha: 2022 10 02  
 Dia del año: 275

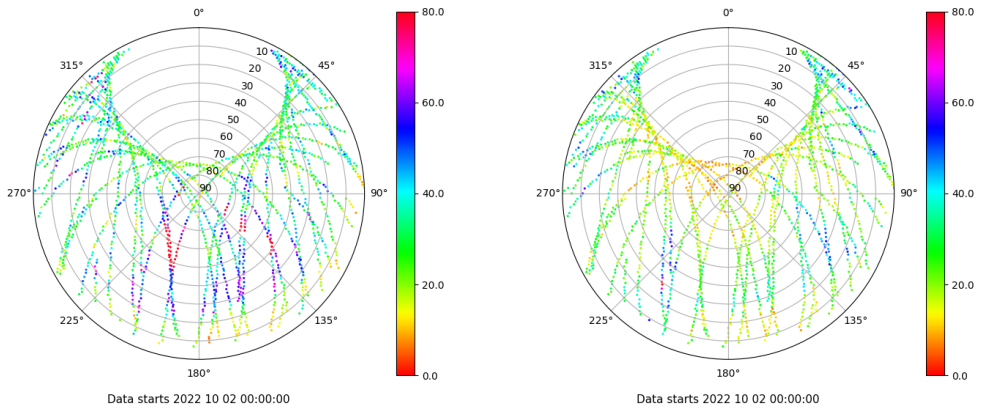
## Señal-Ruido GPS L1 y L2

Skyplot for station CANT. Signal to Noise S1C Data file CANT00ESP\_R\_2022275.xtr Skyplot for station CANT. Signal to Noise S2W Data file CANT00ESP\_R\_2022275.xtr



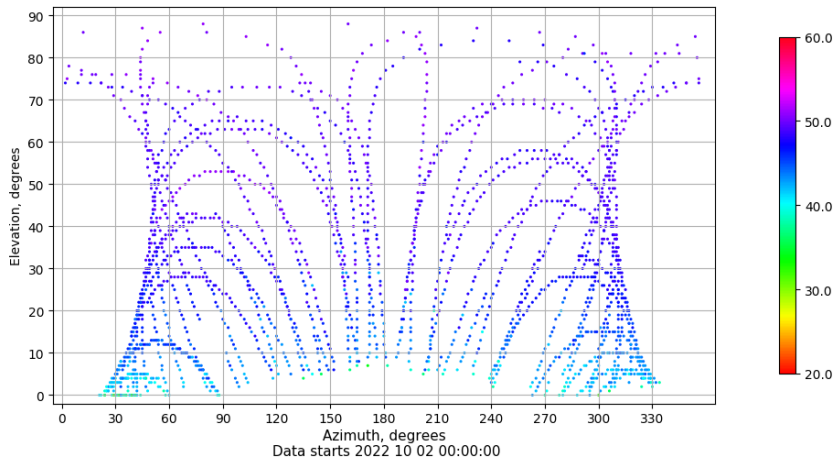
## Multipath GPS L1 y L2

Skyplot for station CANT. Parameter M1C Data file CANT00ESP\_R\_2022275.xtr Skyplot for station CANT. Parameter M2W Data file CANT00ESP\_R\_2022275.xtr



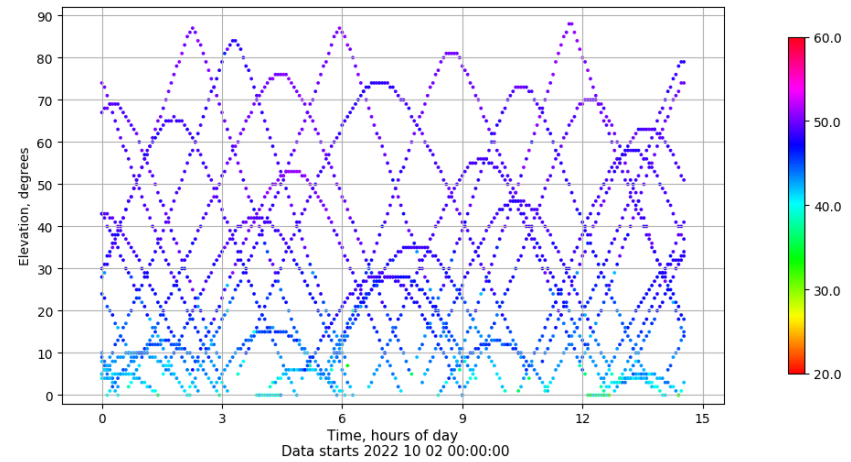
## Azimut-Elevacion

Azimuth-elevation plot for station CANT. Signal to Noise S1C Data file CANT00ESP\_R\_2022275.xtr



## Tiempo-Elevacion

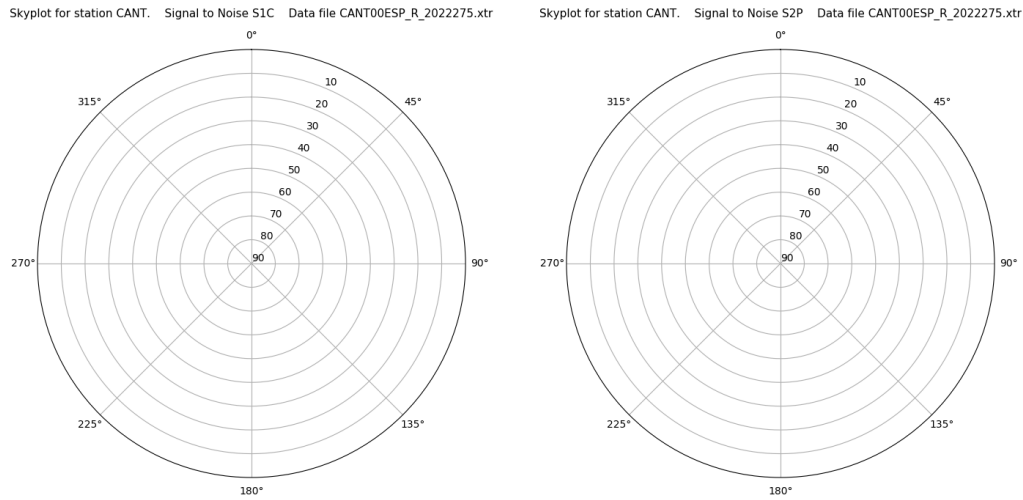
Time-elevation plot for station CANT. Signal to Noise S1C Data file CANT00ESP\_R\_2022275.xtr



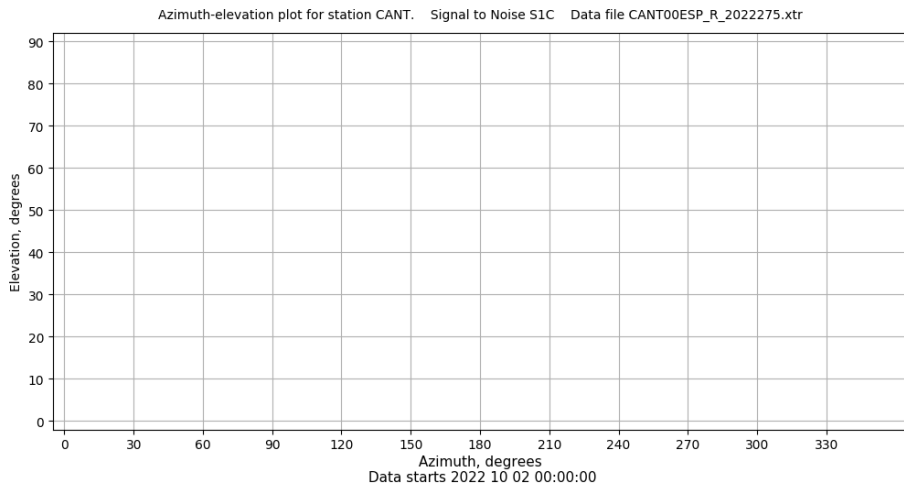
# Control de calidad GNSS GLO diario

Estacion: CANT  
 Fecha: 2022 10 02  
 Dia del año: 275

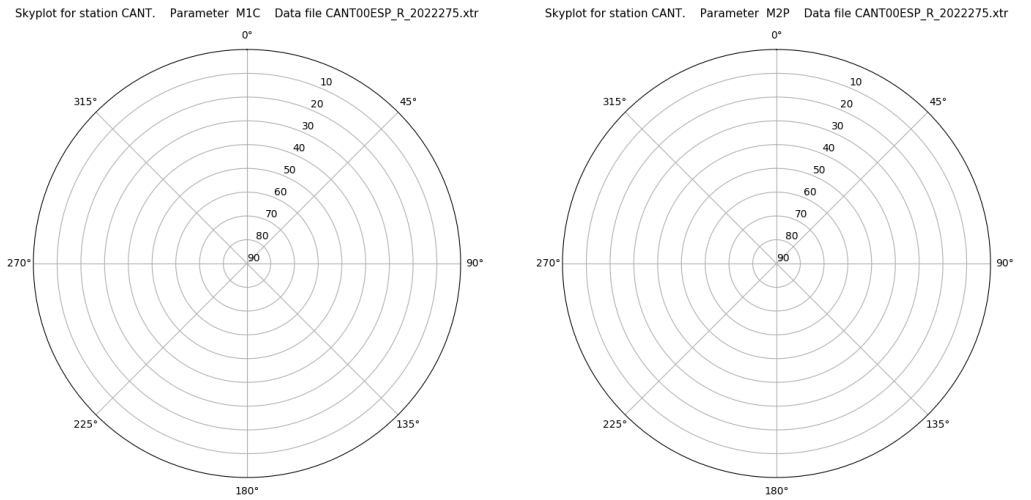
## Señal-Ruido GLO L1 y L2



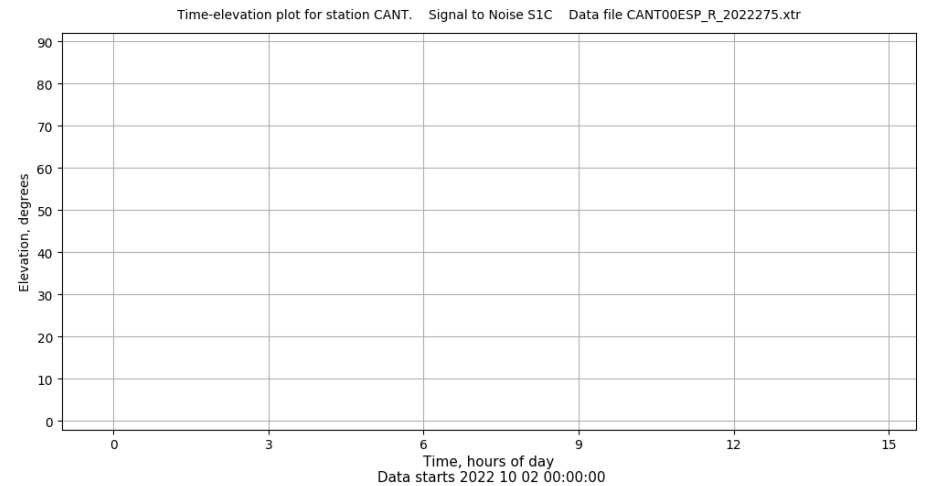
## Azimut-Elevacion



## Multipath GLO L1 y L2



## Tiempo-Elevacion

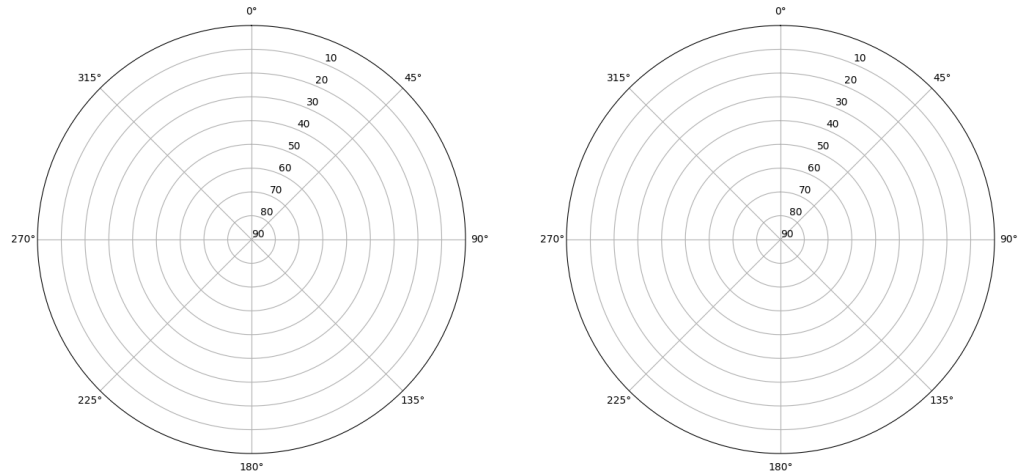


# Control de calidad GNSS GAL diario

Estacion: CANT  
 Fecha: 2022 10 02  
 Dia del año: 275

## Señal-Ruido GAL E1 y E5

Skyplot for station CANT. Signal to Noise S1C Data file CANT00ESP\_R\_2022275.xtr Skyplot for station CANT. Signal to Noise S5Q Data file CANT00ESP\_R\_2022275.xtr

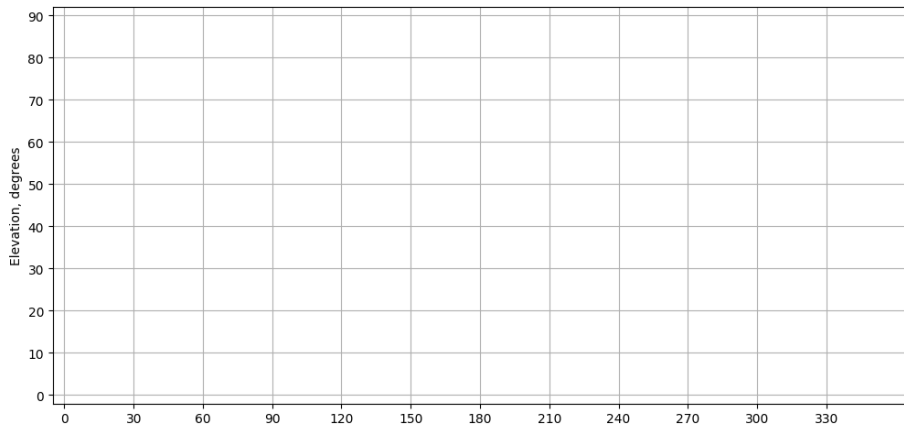


Data starts 2022 10 02 00:00:00

Data starts 2022 10 02 00:00:00

## Azimut-Elevacion

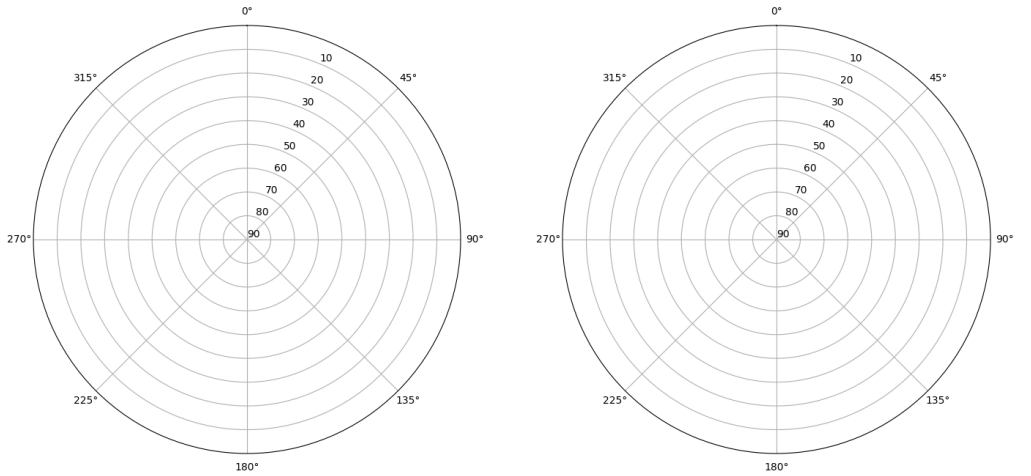
Azimuth-elevation plot for station CANT. Signal to Noise S1C Data file CANT00ESP\_R\_2022275.xtr



Data starts 2022 10 02 00:00:00

## Multipath GAL E1 y E5

Skyplot for station CANT. Parameter M1C Data file CANT00ESP\_R\_2022275.xtr Skyplot for station CANT. Parameter M5Q Data file CANT00ESP\_R\_2022275.xtr

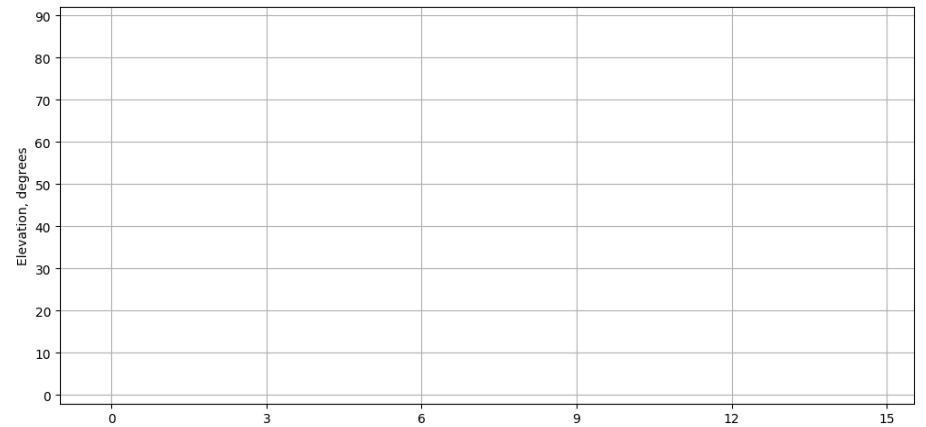


Data starts 2022 10 02 00:00:00

Data starts 2022 10 02 00:00:00

## Tiempo-Elevacion

Time-elevation plot for station CANT. Signal to Noise S1C Data file CANT00ESP\_R\_2022275.xtr



Data starts 2022 10 02 00:00:00