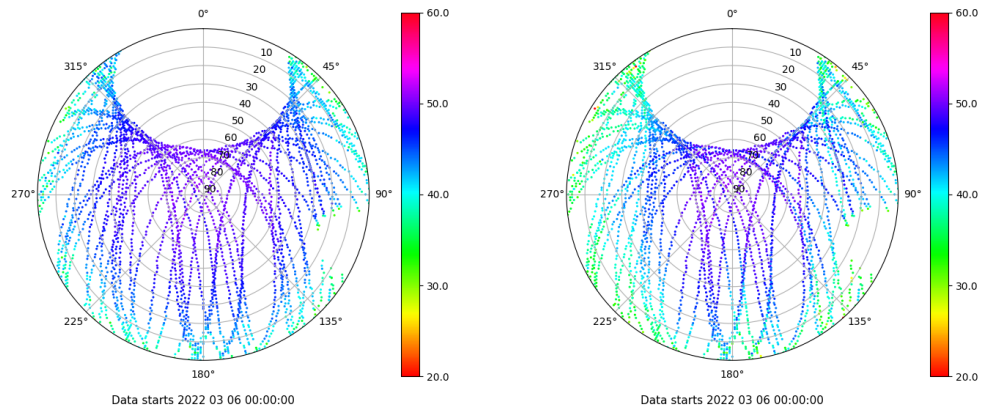


Control de calidad GNSS GPS diario

Estacion: CAAL
 Fecha: 2022 03 06
 Dia del año: 065

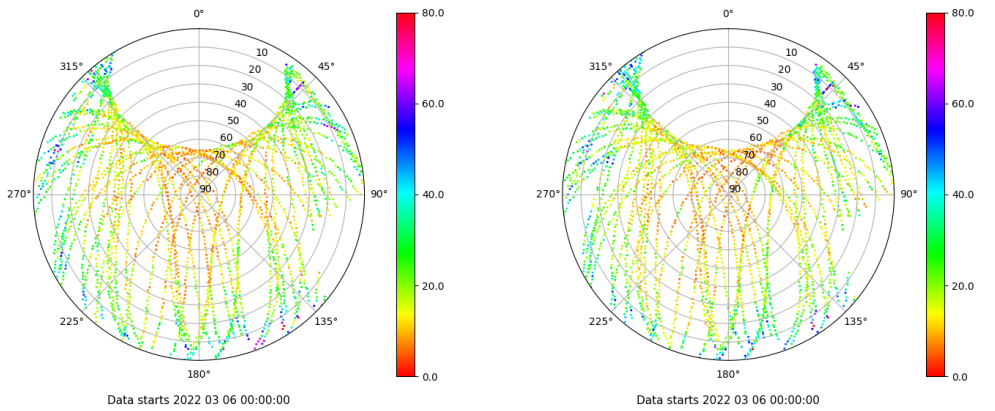
Señal-Ruido GPS L1 y L2

Skyplot for station CAAL. Signal to Noise S1C Data file CAAL00ESP_R_2022065.xtr Skyplot for station CAAL. Signal to Noise S2W Data file CAAL00ESP_R_2022065.xtr



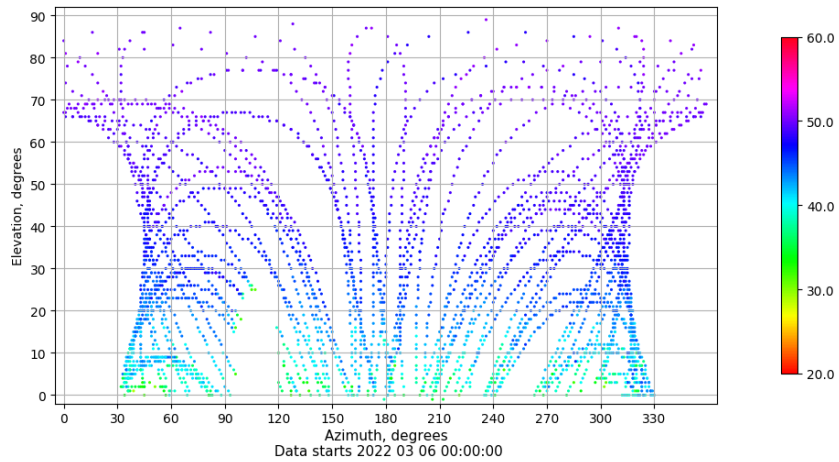
Multipath GPS L1 y L2

Skyplot for station CAAL. Parameter M1C Data file CAAL00ESP_R_2022065.xtr Skyplot for station CAAL. Parameter M2W Data file CAAL00ESP_R_2022065.xtr



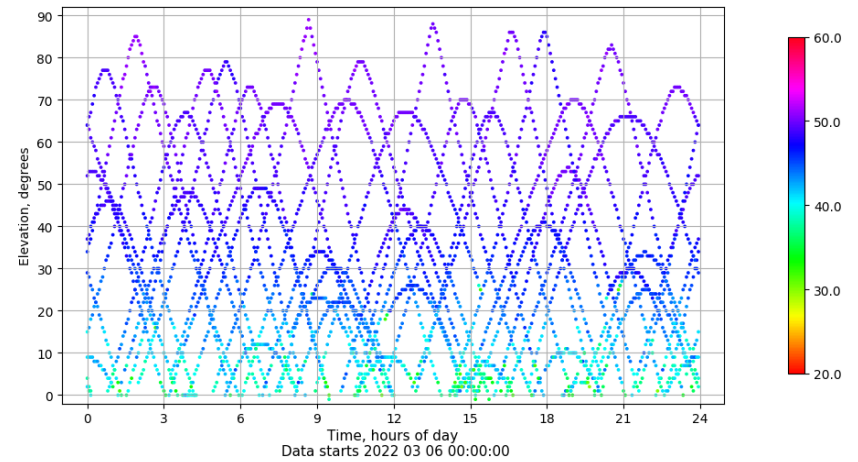
Azimuth-Elevacion

Azimuth-elevation plot for station CAAL. Signal to Noise S1C Data file CAAL00ESP_R_2022065.xtr



Tiempo-Elevacion

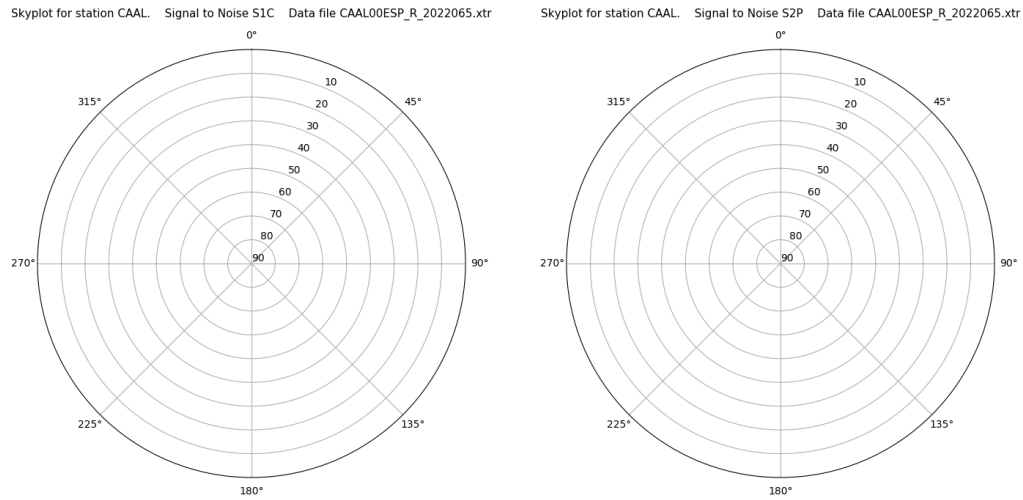
Time-elevation plot for station CAAL. Signal to Noise S1C Data file CAAL00ESP_R_2022065.xtr



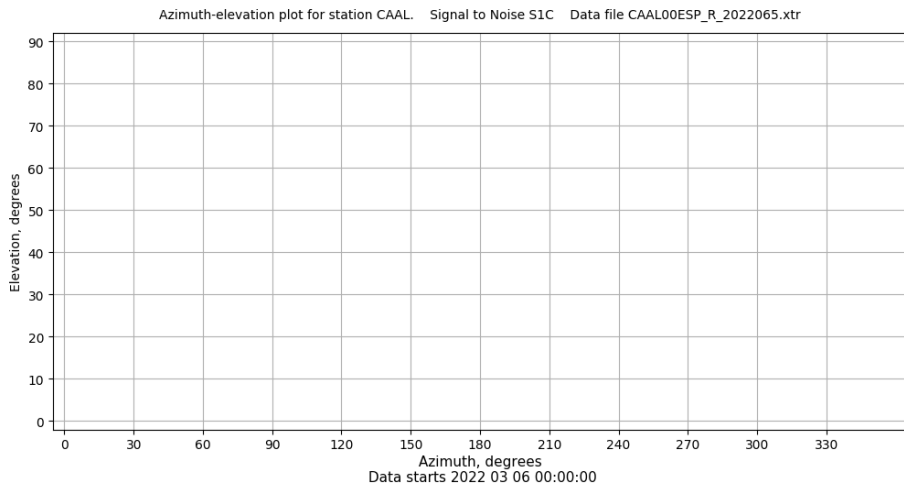
Control de calidad GNSS GLO diario

Estacion: CAAL
 Fecha: 2022 03 06
 Dia del año: 065

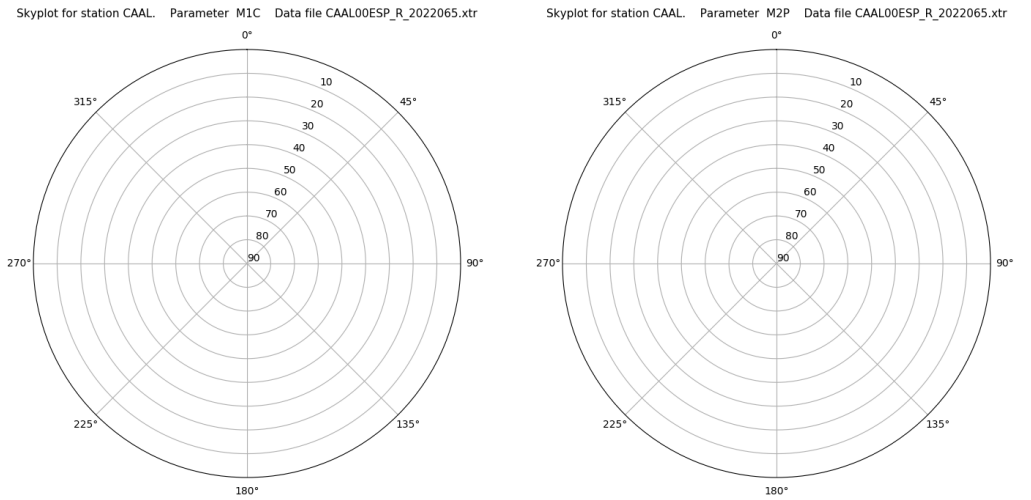
Señal-Ruido GLO L1 y L2



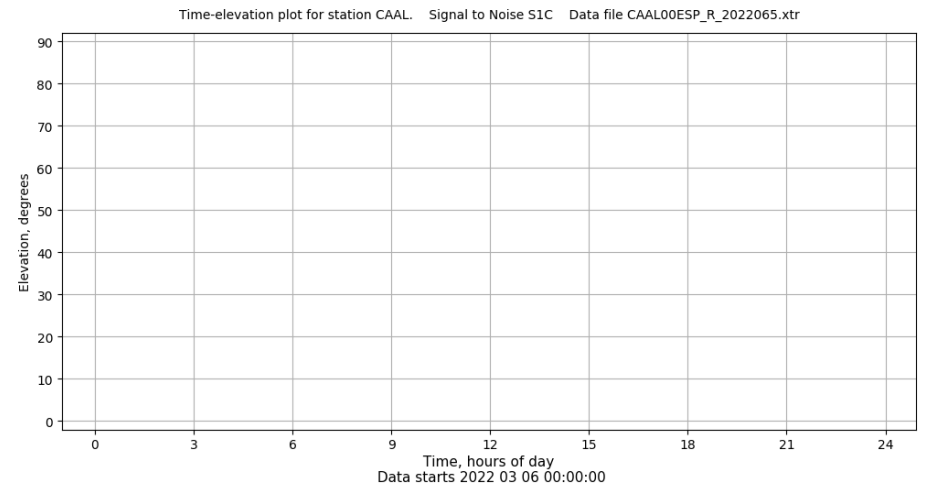
Azimut-Elevacion



Multipath GLO L1 y L2



Tiempo-Elevacion

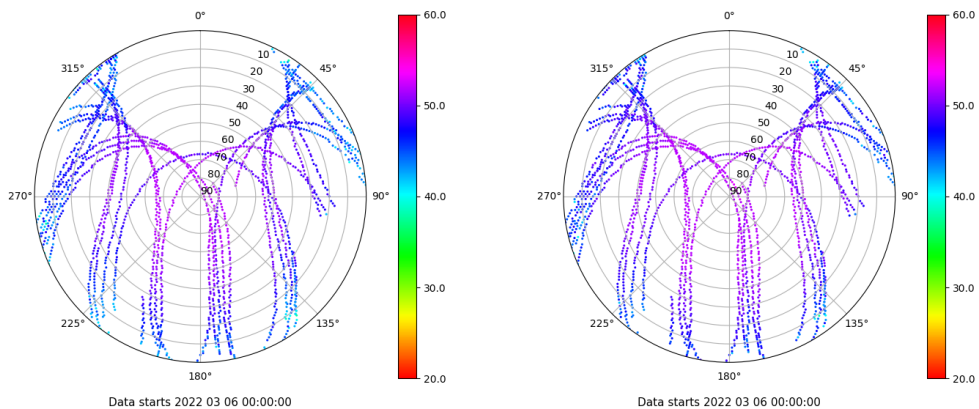


Control de calidad GNSS GAL diario

Estacion: CAAL
 Fecha: 2022 03 06
 Dia del año: 065

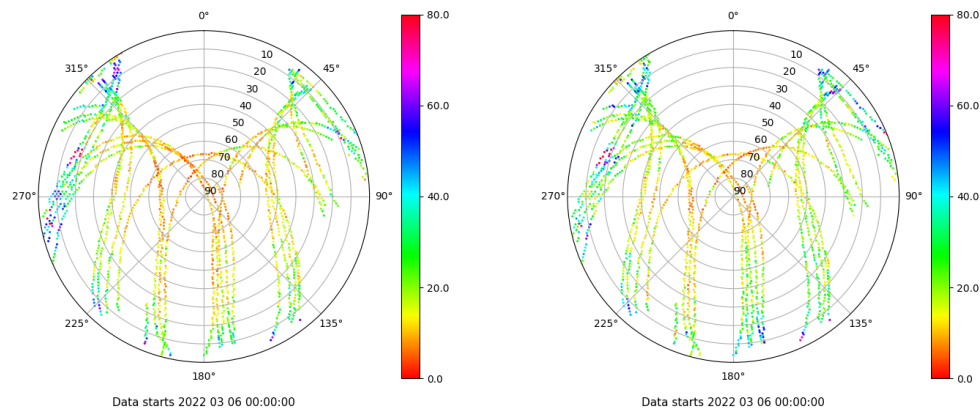
Señal-Ruido GAL E1 y E5

Skyplot for station CAAL. Signal to Noise S1C Data file CAAL00ESP_R_2022065.xtr Skyplot for station CAAL. Signal to Noise S5Q Data file CAAL00ESP_R_2022065.xtr



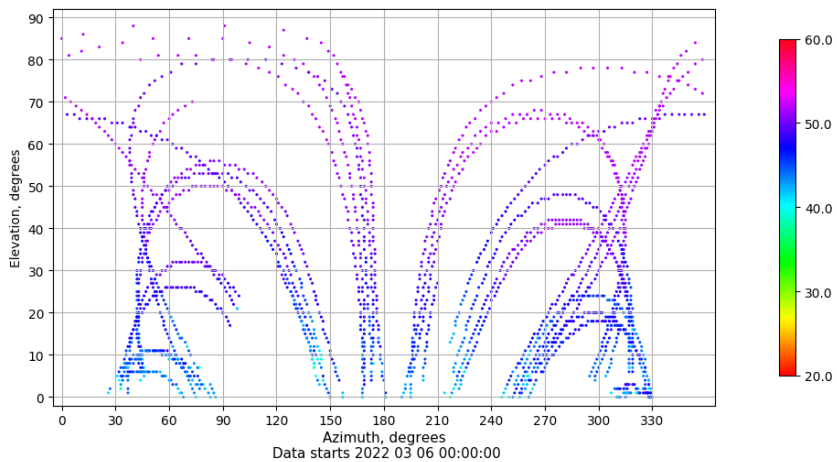
Multipath GAL E1 y E5

Skyplot for station CAAL. Parameter M1C Data file CAAL00ESP_R_2022065.xtr Skyplot for station CAAL. Parameter M5Q Data file CAAL00ESP_R_2022065.xtr



Azimuth-Elevacion

Azimuth-elevation plot for station CAAL. Signal to Noise S1C Data file CAAL00ESP_R_2022065.xtr



Tiempo-Elevacion

Time-elevation plot for station CAAL. Signal to Noise S1C Data file CAAL00ESP_R_2022065.xtr

