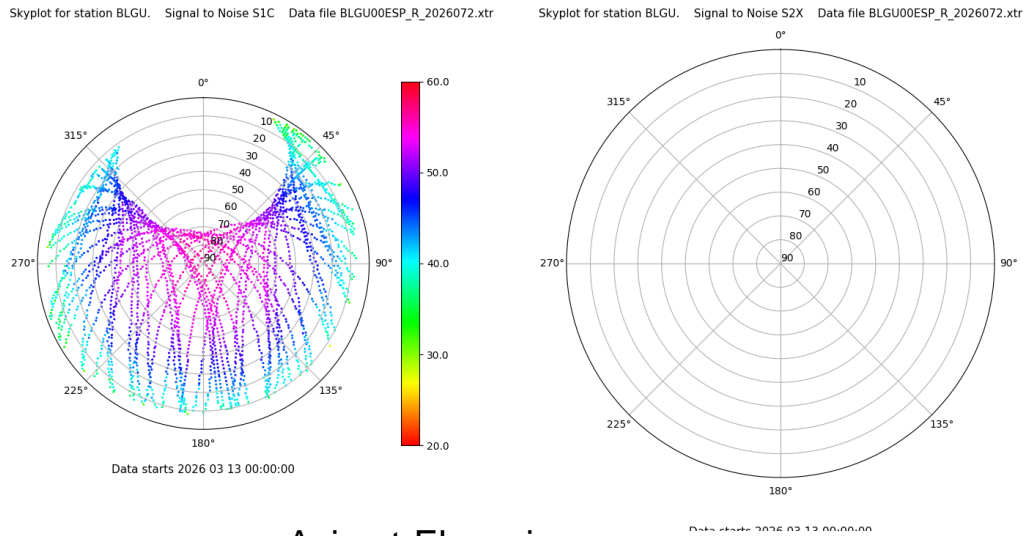


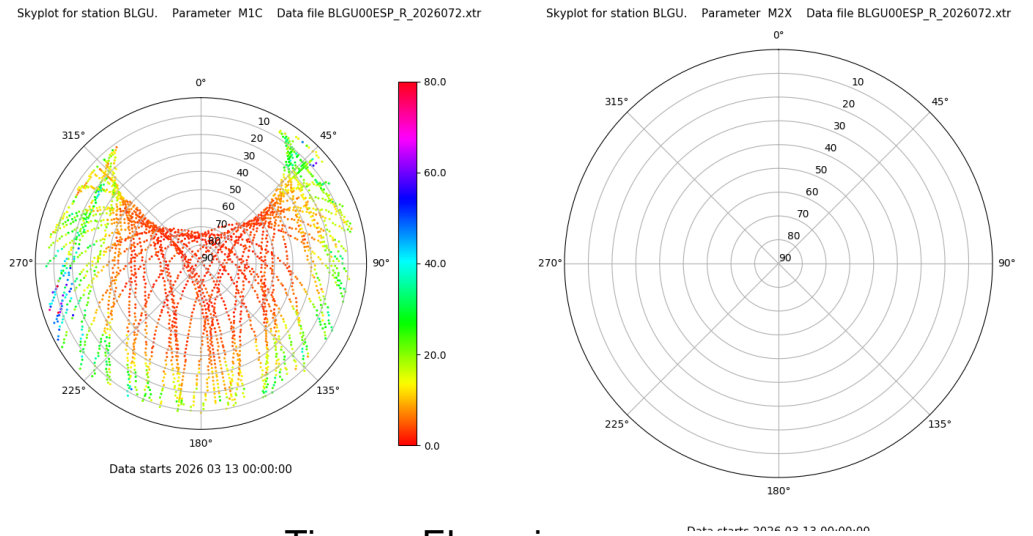
# Control de calidad GNSS GPS diario

Estacion: BLGU  
 Fecha: 2026 03 13  
 Dia del año: 072

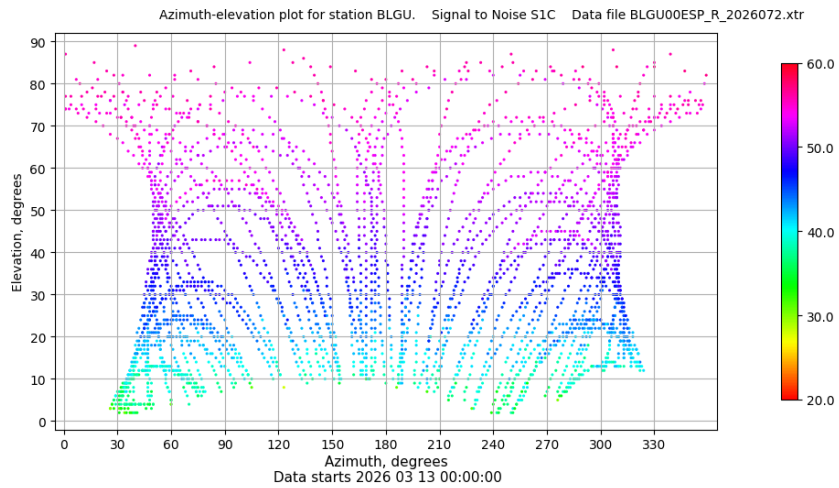
## Señal-Ruido GPS L1 y L2



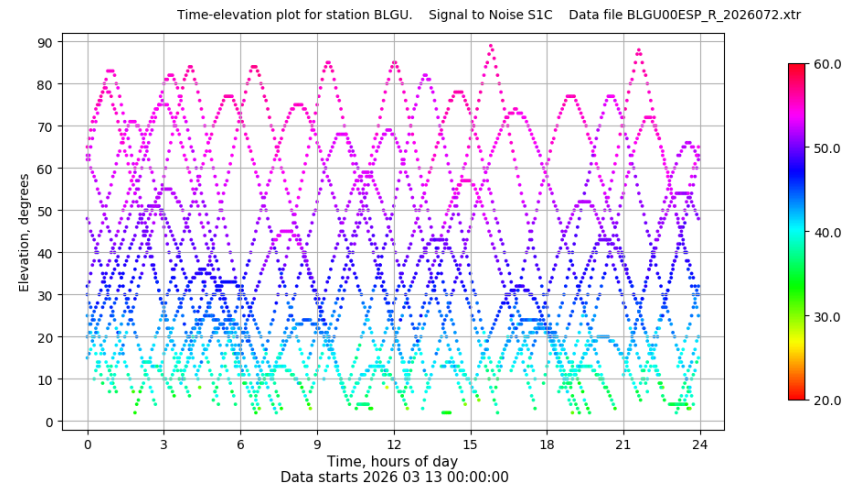
## Multipath GPS L1 y L2



## Azimuth-Elevacion



## Tiempo-Elevacion

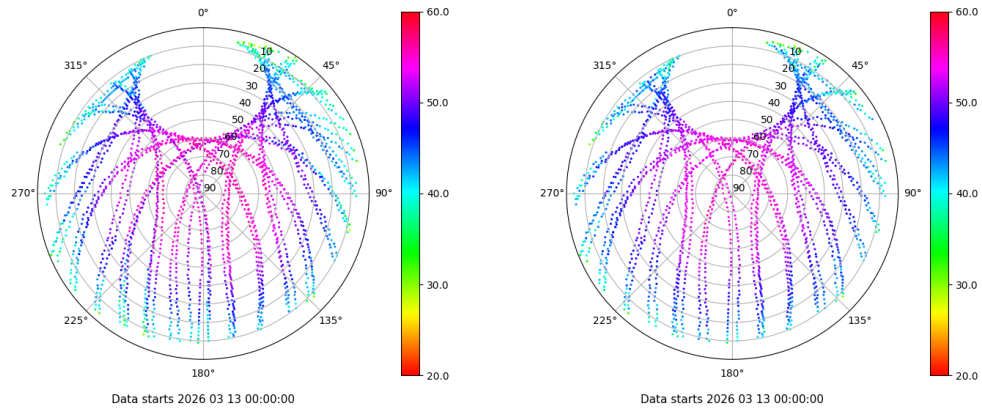


# Control de calidad GNSS GLO diario

Estacion: BLGU  
 Fecha: 2026 03 13  
 Dia del año: 072

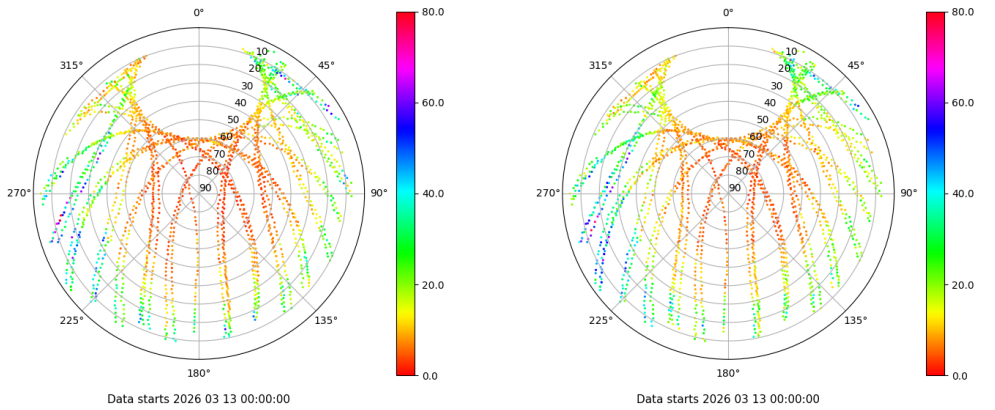
## Señal-Ruido GLO L1 y L2

Skyplot for station BLGU. Signal to Noise S1C Data file BLGU00ESP\_R\_2026072.xtr Skyplot for station BLGU. Signal to Noise S2C Data file BLGU00ESP\_R\_2026072.xtr



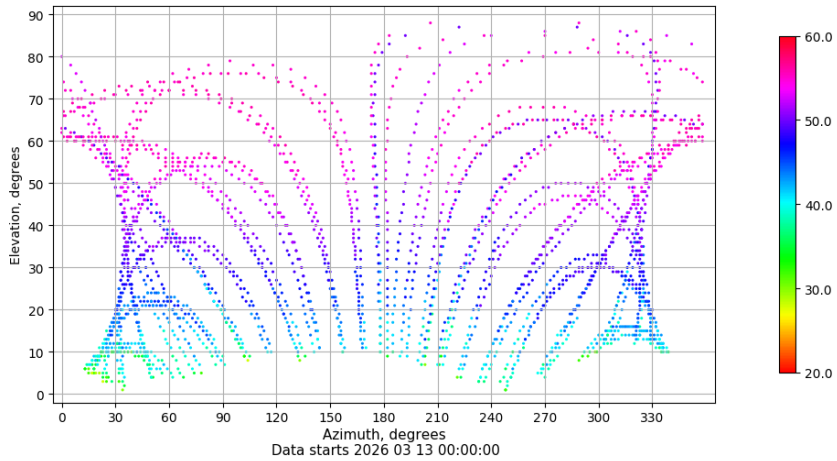
## Multipath GLO L1 y L2

Skyplot for station BLGU. Parameter M1C Data file BLGU00ESP\_R\_2026072.xtr Skyplot for station BLGU. Parameter M2C Data file BLGU00ESP\_R\_2026072.xtr



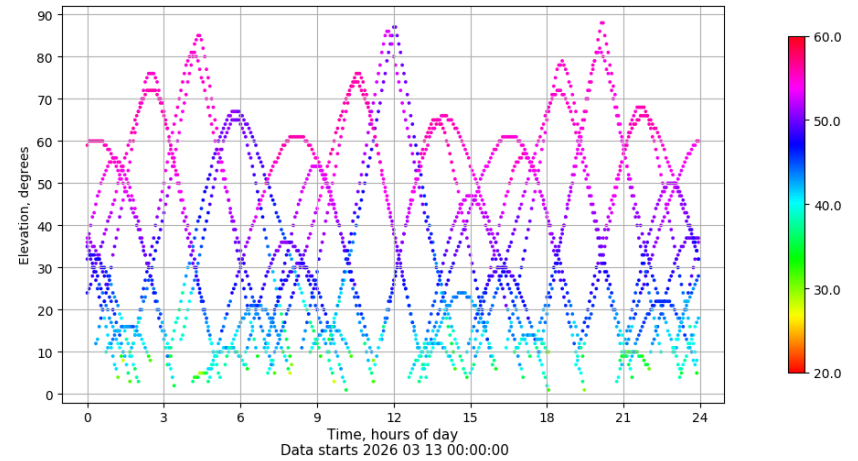
## Azimut-Elevacion

Azimuth-elevation plot for station BLGU. Signal to Noise S1C Data file BLGU00ESP\_R\_2026072.xtr



## Tiempo-Elevacion

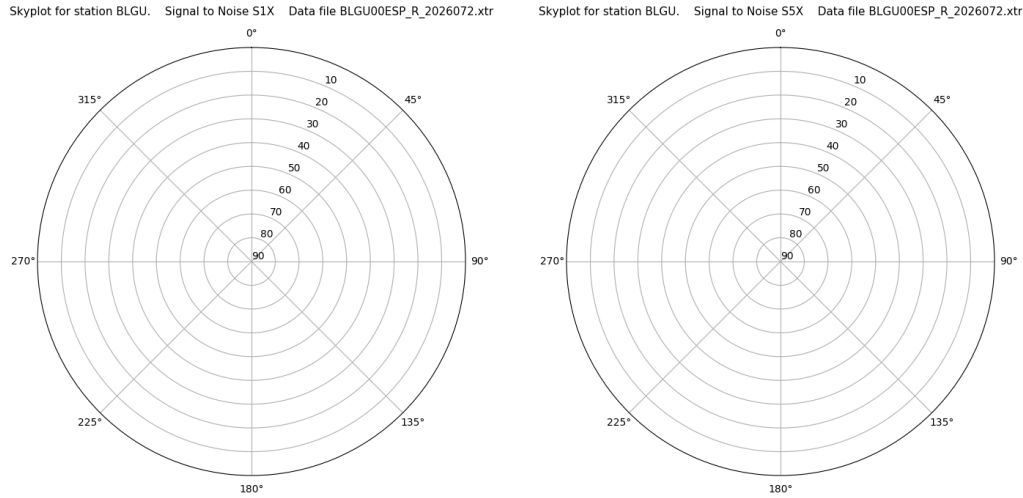
Time-elevation plot for station BLGU. Signal to Noise S1C Data file BLGU00ESP\_R\_2026072.xtr



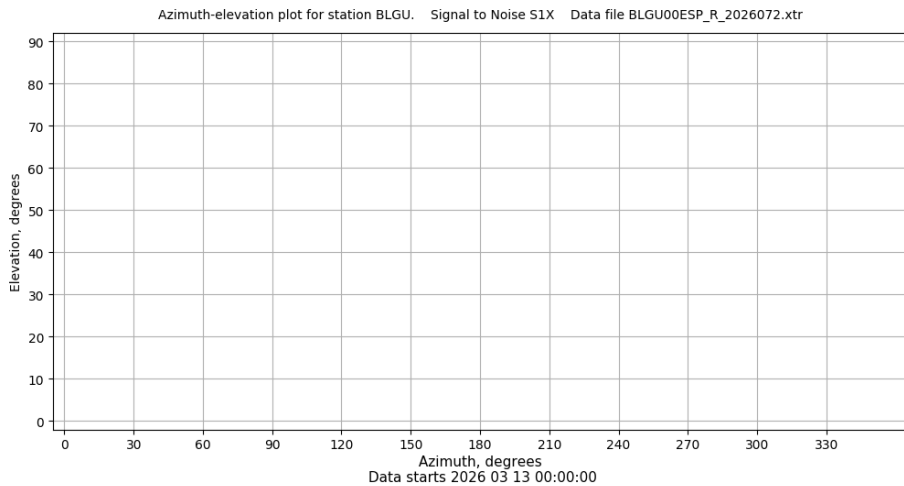
# Control de calidad GNSS GAL diario

Estacion: BLGU  
 Fecha: 2026 03 13  
 Dia del año: 072

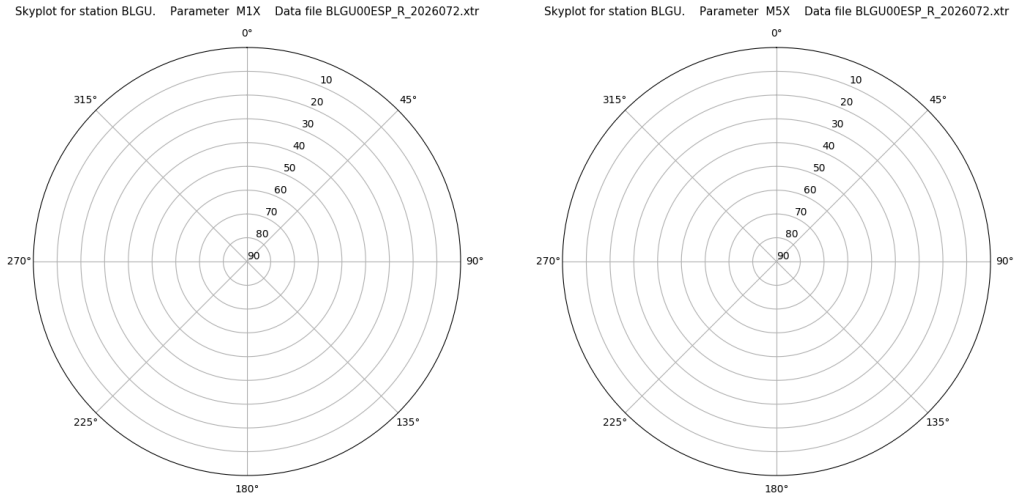
## Señal-Ruido GAL E1 y E5



## Azimut-Elevacion



## Multipath GAL E1 y E5



## Tiempo-Elevacion

