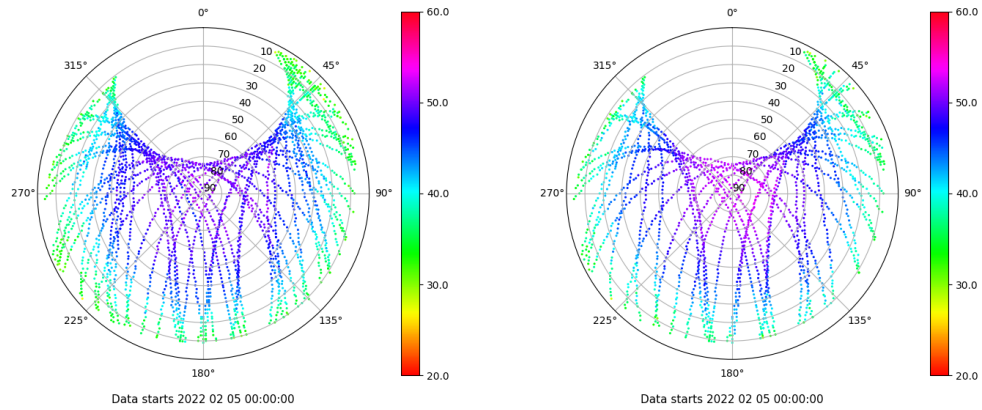


# Control de calidad GNSS GPS diario

Estacion: BLGU  
 Fecha: 2022 02 05  
 Dia del año: 036

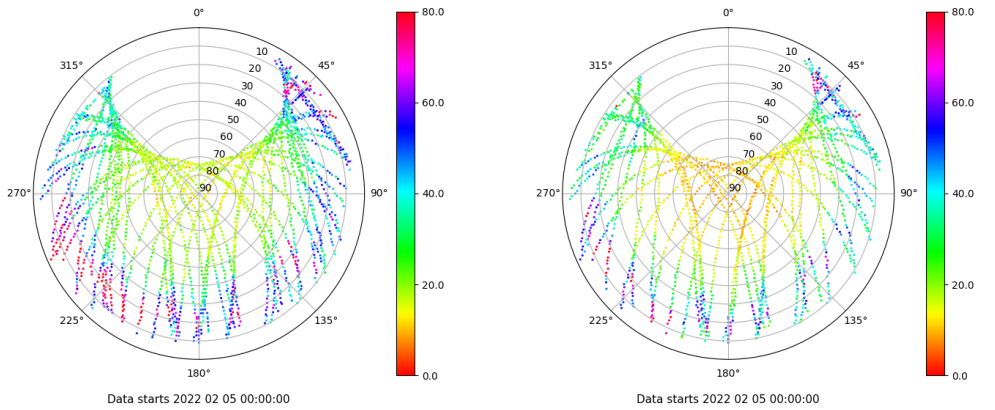
## Señal-Ruido GPS L1 y L2

Skyplot for station BLGU. Signal to Noise S1C Data file BLGU00ESP\_R\_2022036.xtr Skyplot for station BLGU. Signal to Noise S2X Data file BLGU00ESP\_R\_2022036.xtr



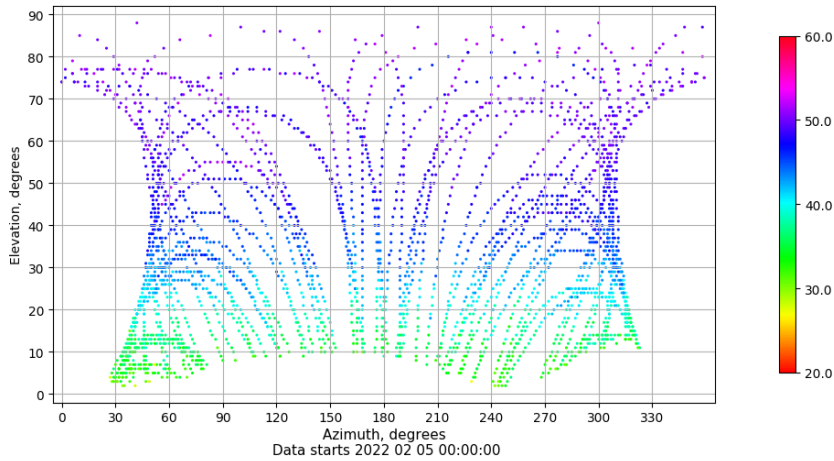
## Multipath GPS L1 y L2

Skyplot for station BLGU. Parameter M1C Data file BLGU00ESP\_R\_2022036.xtr Skyplot for station BLGU. Parameter M2X Data file BLGU00ESP\_R\_2022036.xtr



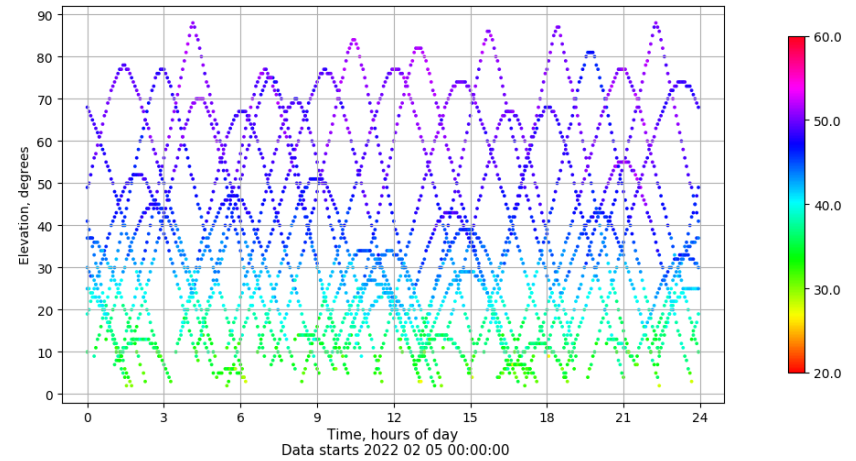
## Azimuth-Elevacion

Azimuth-elevation plot for station BLGU. Signal to Noise S1C Data file BLGU00ESP\_R\_2022036.xtr



## Tiempo-Elevacion

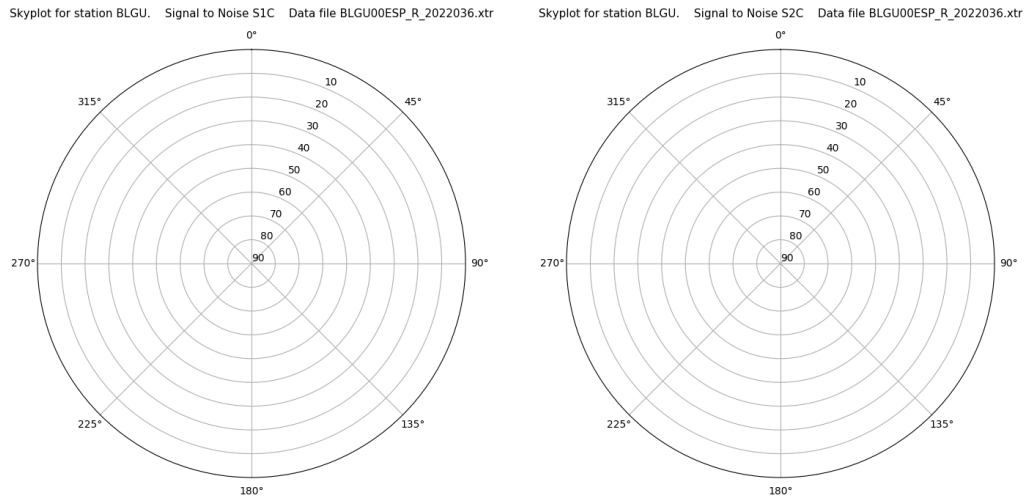
Time-elevation plot for station BLGU. Signal to Noise S1C Data file BLGU00ESP\_R\_2022036.xtr



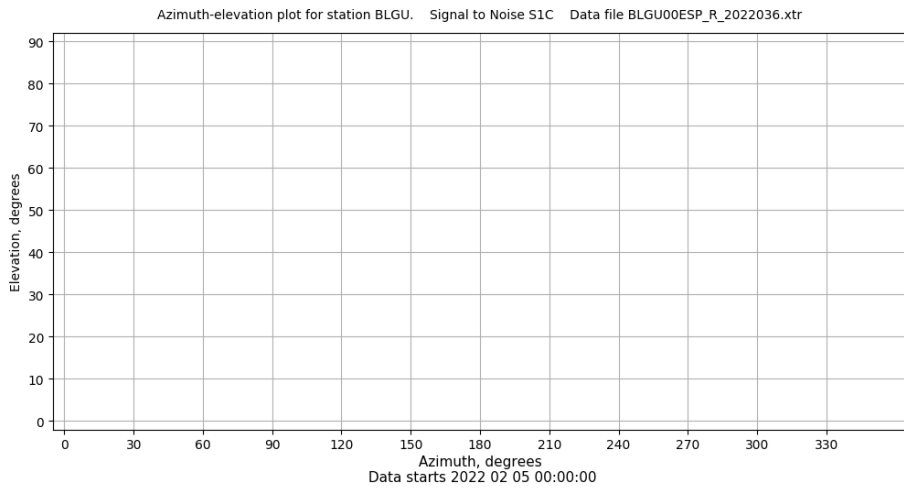
# Control de calidad GNSS GLO diario

Estacion: BLGU  
 Fecha: 2022 02 05  
 Dia del año: 036

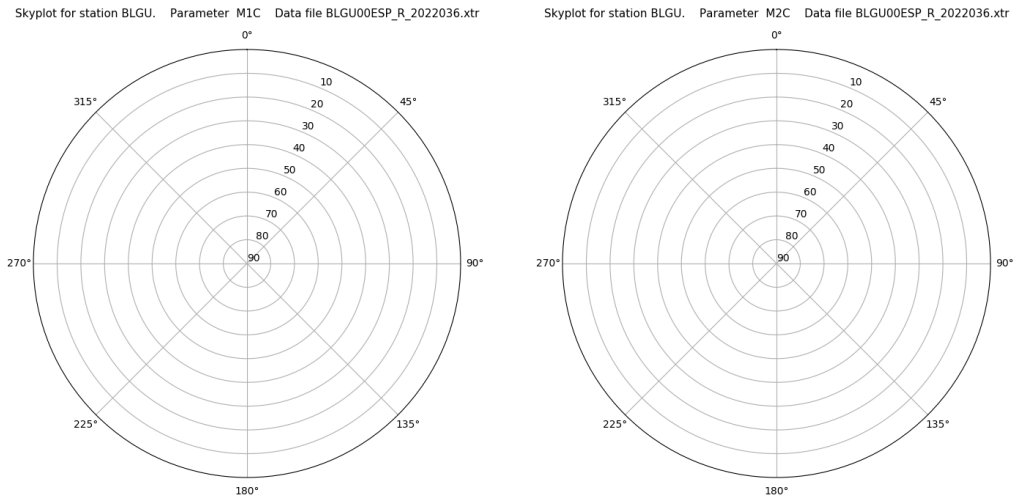
## Señal-Ruido GLO L1 y L2



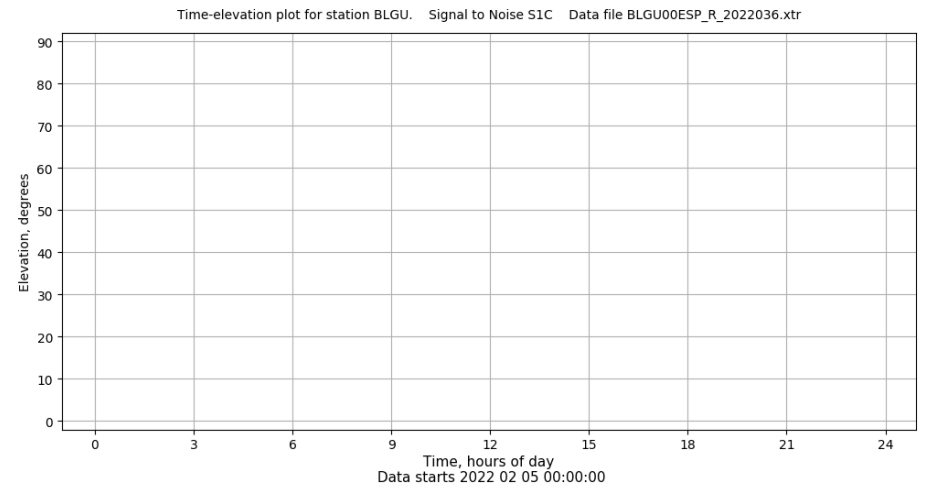
## Azimut-Elevacion



## Multipath GLO L1 y L2



## Tiempo-Elevacion

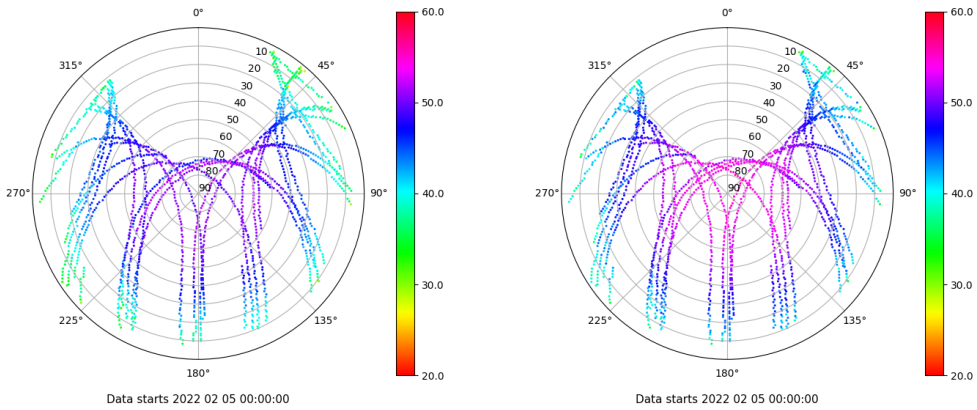


# Control de calidad GNSS GAL diario

Estacion: BLGU  
 Fecha: 2022 02 05  
 Dia del año: 036

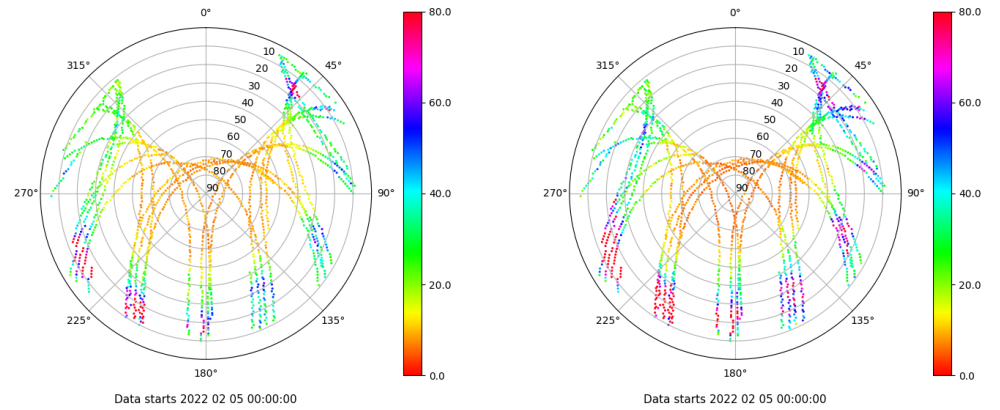
## Señal-Ruido GAL E1 y E5

Skyplot for station BLGU. Signal to Noise S1X Data file BLGU00ESP\_R\_2022036.xtr Skyplot for station BLGU. Signal to Noise S5X Data file BLGU00ESP\_R\_2022036.xtr



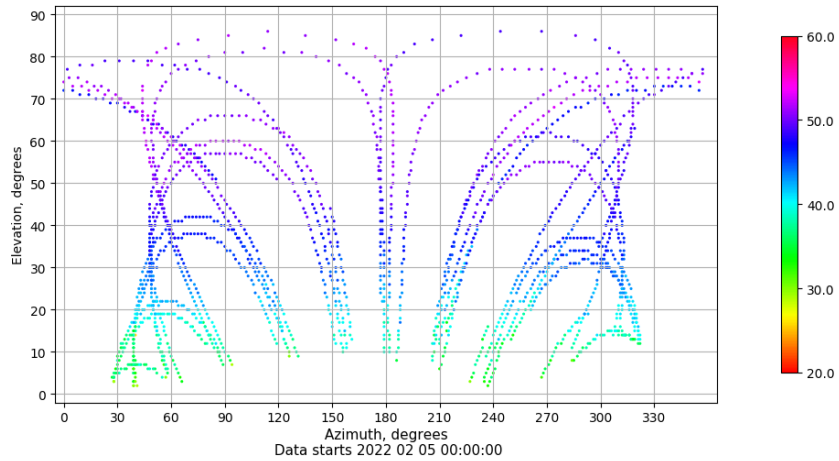
## Multipath GAL E1 y E5

Skyplot for station BLGU. Parameter M1X Data file BLGU00ESP\_R\_2022036.xtr Skyplot for station BLGU. Parameter M5X Data file BLGU00ESP\_R\_2022036.xtr



## Azimuth-Elevacion

Azimuth-elevation plot for station BLGU. Signal to Noise S1X Data file BLGU00ESP\_R\_2022036.xtr



## Tiempo-Elevacion

Time-elevation plot for station BLGU. Signal to Noise S1X Data file BLGU00ESP\_R\_2022036.xtr

