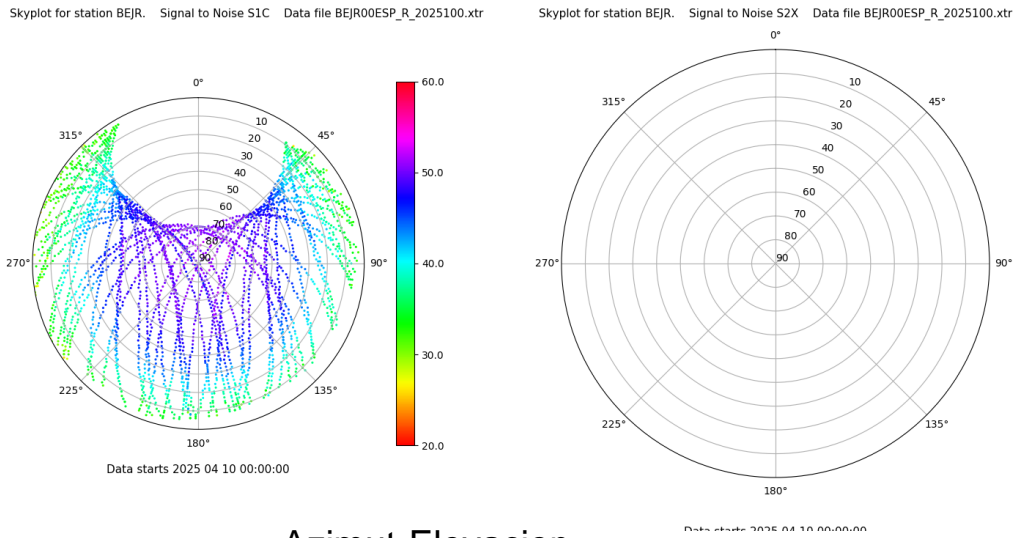


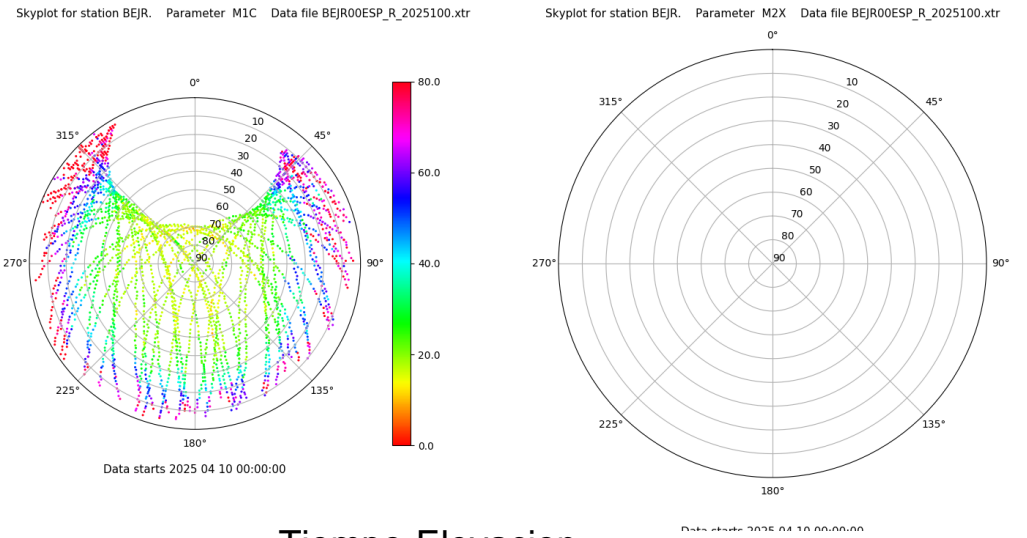
# Control de calidad GNSS GPS diario

Estacion: BEJR  
 Fecha: 2025 04 10  
 Dia del año: 100

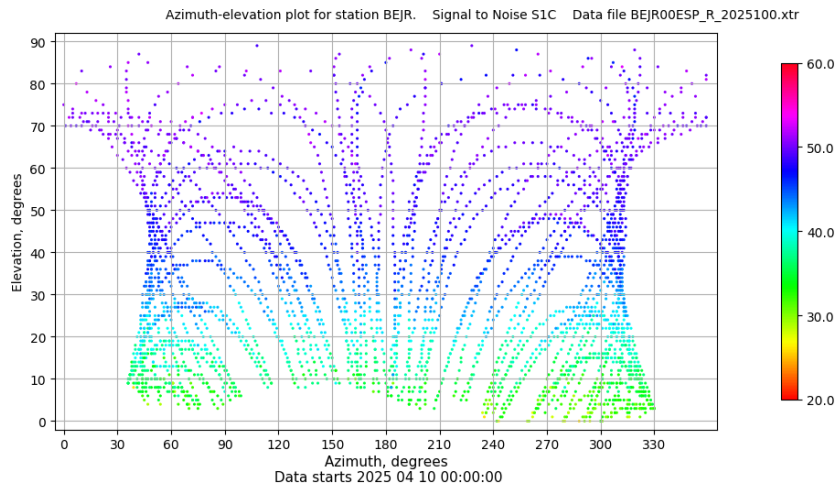
## Señal-Ruido GPS L1 y L2



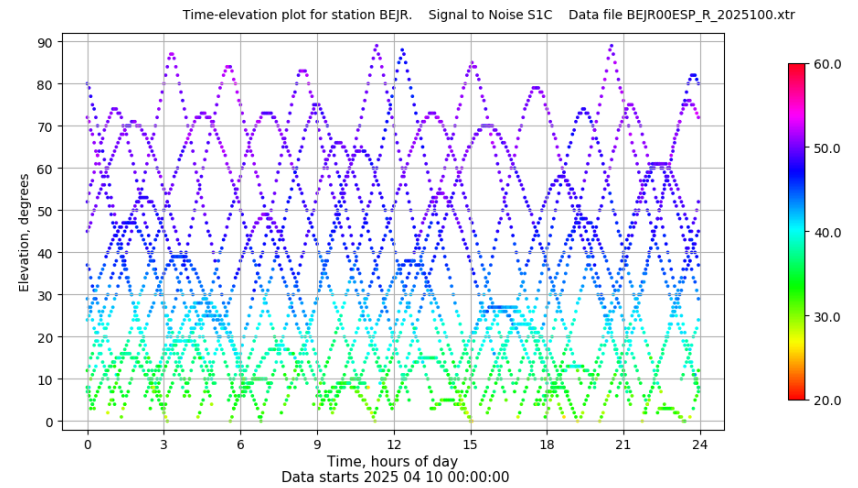
## Multipath GPS L1 y L2



## Azimuth-Elevacion



## Tiempo-Elevacion

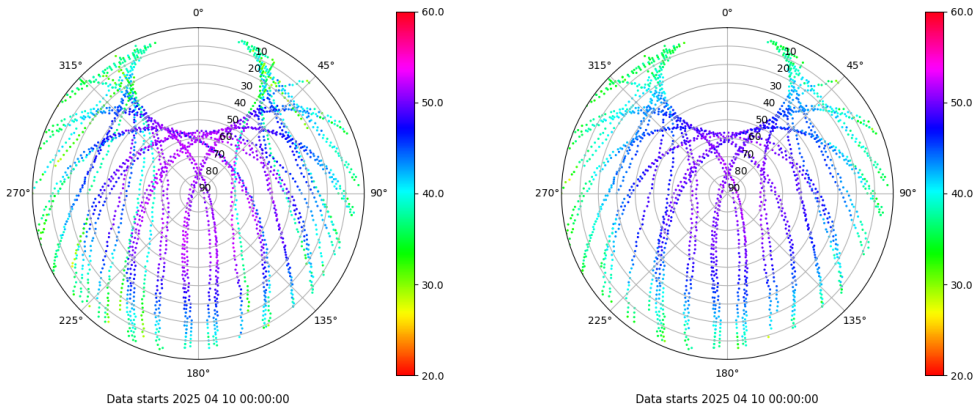


# Control de calidad GNSS GLO diario

Estacion: BEJR  
 Fecha: 2025 04 10  
 Dia del año: 100

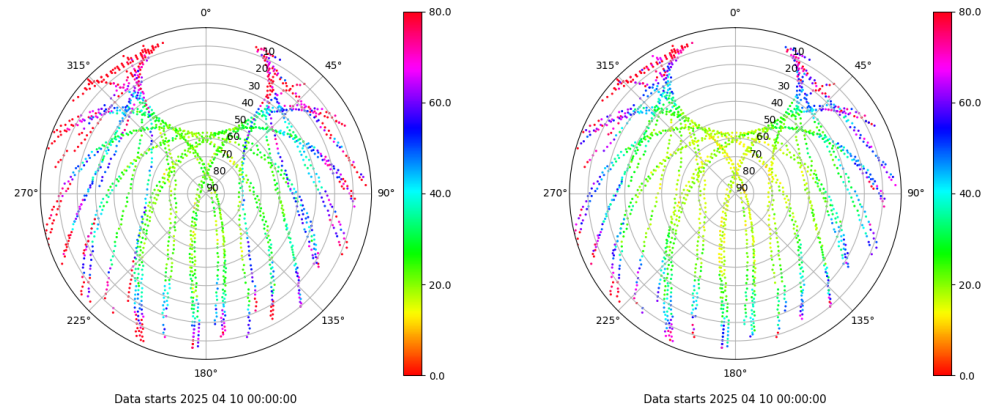
## Señal-Ruido GLO L1 y L2

Skyplot for station BEJR. Signal to Noise S1C Data file BEJR00ESP\_R\_2025100.xtr Skyplot for station BEJR. Signal to Noise S2C Data file BEJR00ESP\_R\_2025100.xtr



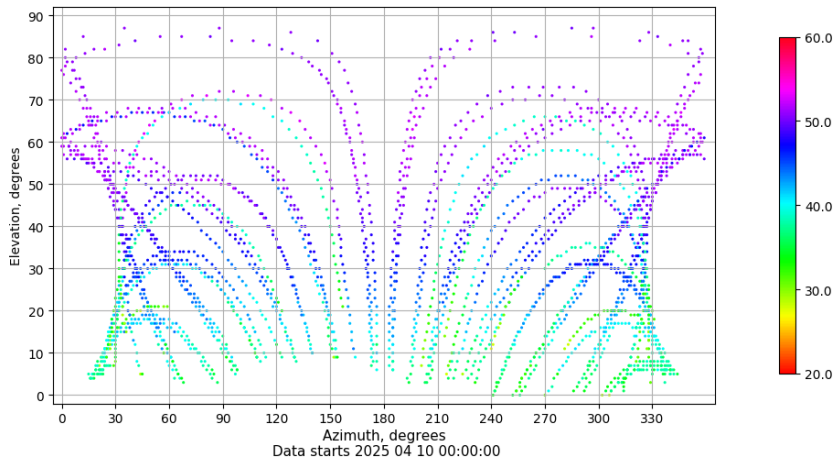
## Multipath GLO L1 y L2

Skyplot for station BEJR. Parameter M1C Data file BEJR00ESP\_R\_2025100.xtr Skyplot for station BEJR. Parameter M2C Data file BEJR00ESP\_R\_2025100.xtr



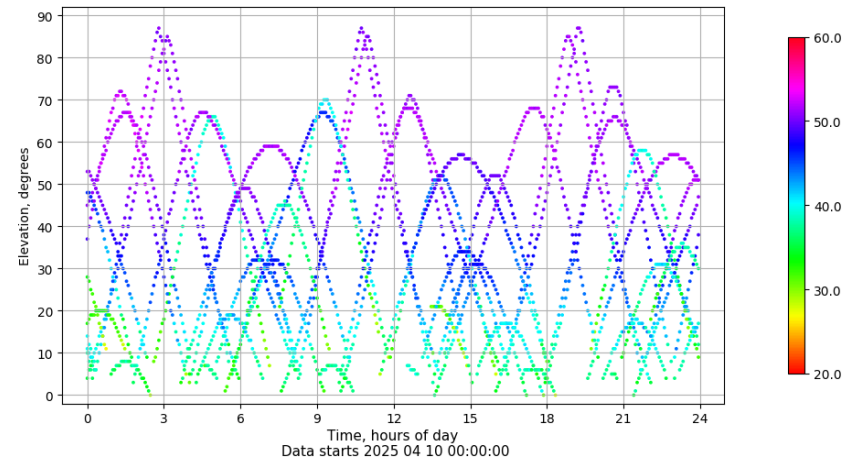
## Azimuth-Elevacion

Azimuth-elevation plot for station BEJR. Signal to Noise S1C Data file BEJR00ESP\_R\_2025100.xtr



## Tiempo-Elevacion

Time-elevation plot for station BEJR. Signal to Noise S1C Data file BEJR00ESP\_R\_2025100.xtr

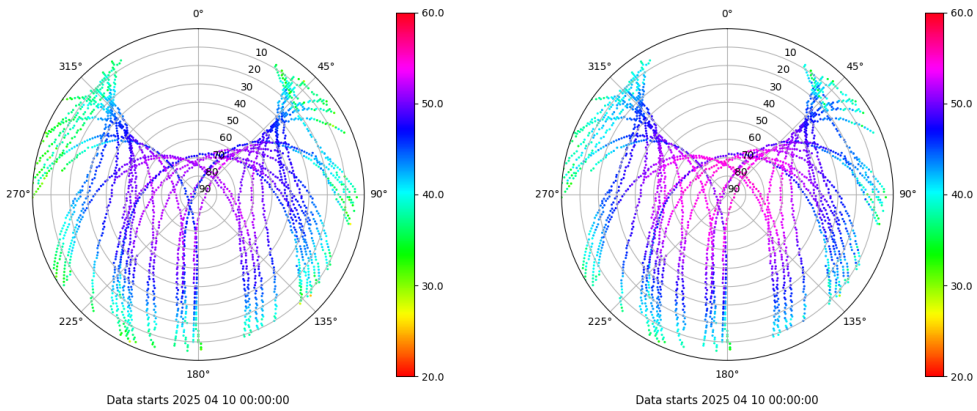


# Control de calidad GNSS GAL diario

Estacion: BEJR  
 Fecha: 2025 04 10  
 Dia del año: 100

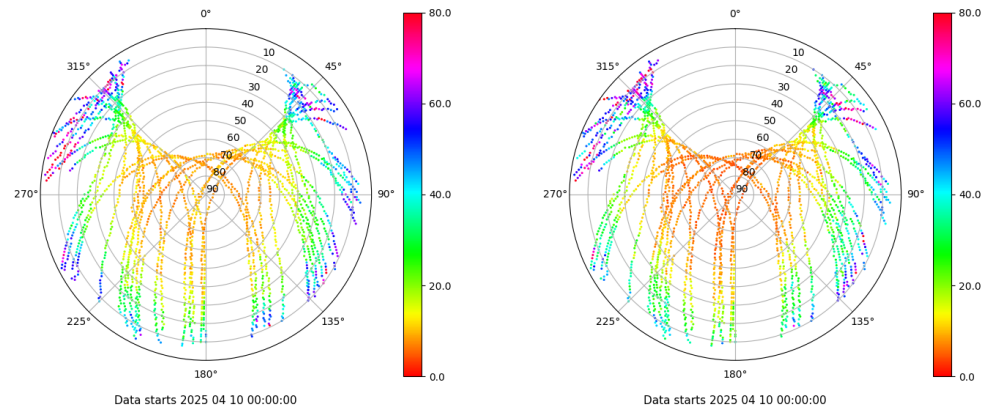
## Señal-Ruido GAL E1 y E5

Skyplot for station BEJR. Signal to Noise S1X Data file BEJR00ESP\_R\_2025100.xtr Skyplot for station BEJR. Signal to Noise S5X Data file BEJR00ESP\_R\_2025100.xtr



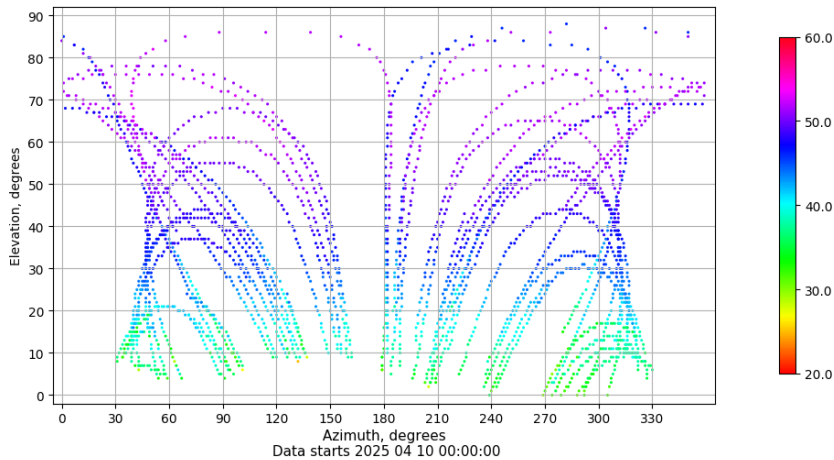
## Multipath GAL E1 y E5

Skyplot for station BEJR. Parameter M1X Data file BEJR00ESP\_R\_2025100.xtr Skyplot for station BEJR. Parameter M5X Data file BEJR00ESP\_R\_2025100.xtr



## Azimuth-Elevacion

Azimuth-elevation plot for station BEJR. Signal to Noise S1X Data file BEJR00ESP\_R\_2025100.xtr



## Tiempo-Elevacion

Time-elevation plot for station BEJR. Signal to Noise S1X Data file BEJR00ESP\_R\_2025100.xtr

