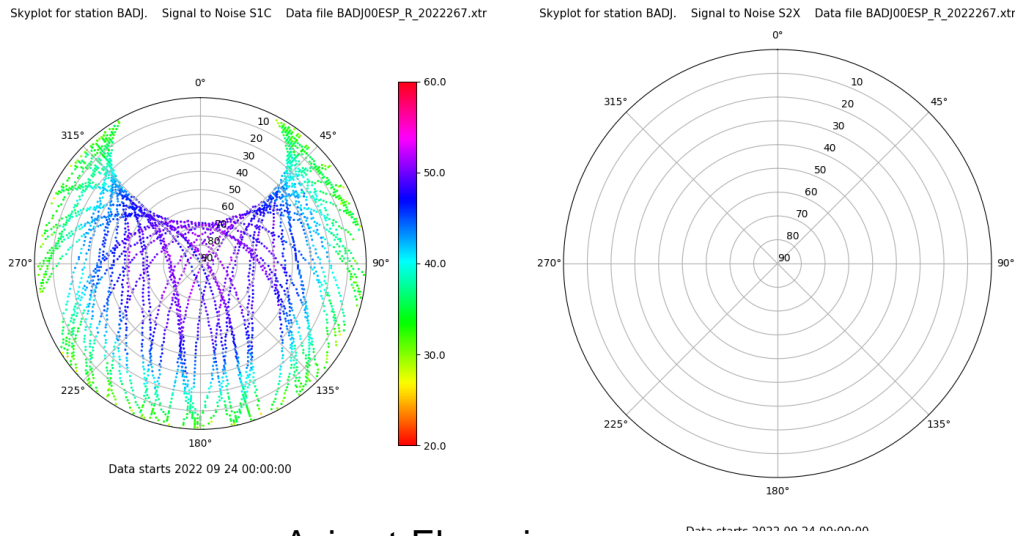


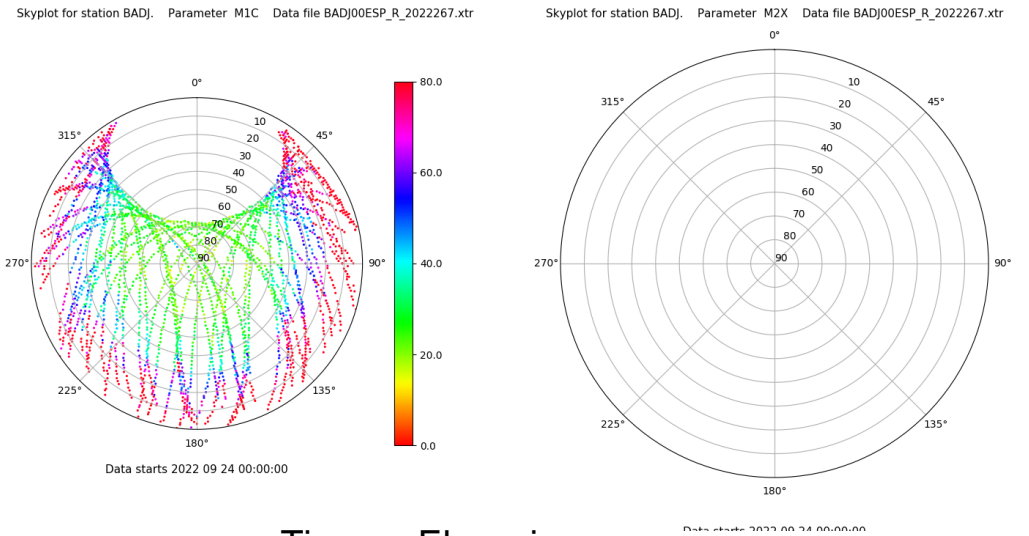
Control de calidad GNSS GPS diario

Estacion: BADI
 Fecha: 2022 09 24
 Dia del año: 267

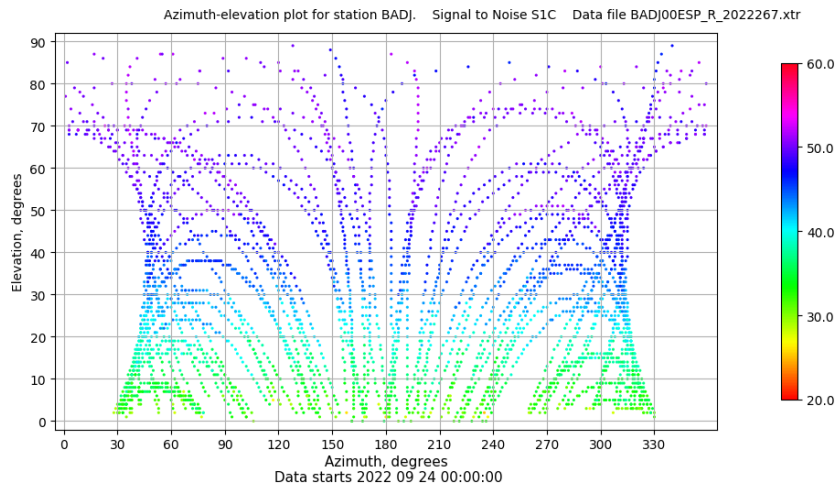
Señal-Ruido GPS L1 y L2



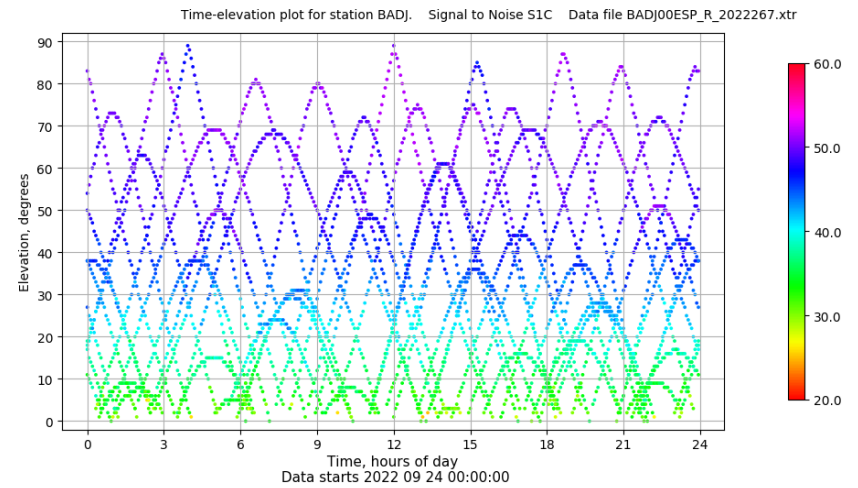
Multipath GPS L1 y L2



Azimuth-Elevacion



Tiempo-Elevacion

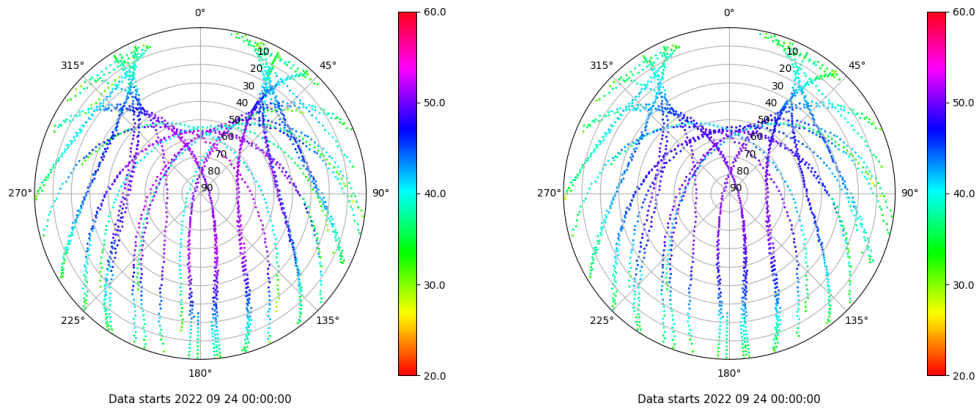


Control de calidad GNSS GLO diario

Estacion: BADI
 Fecha: 2022 09 24
 Dia del año: 267

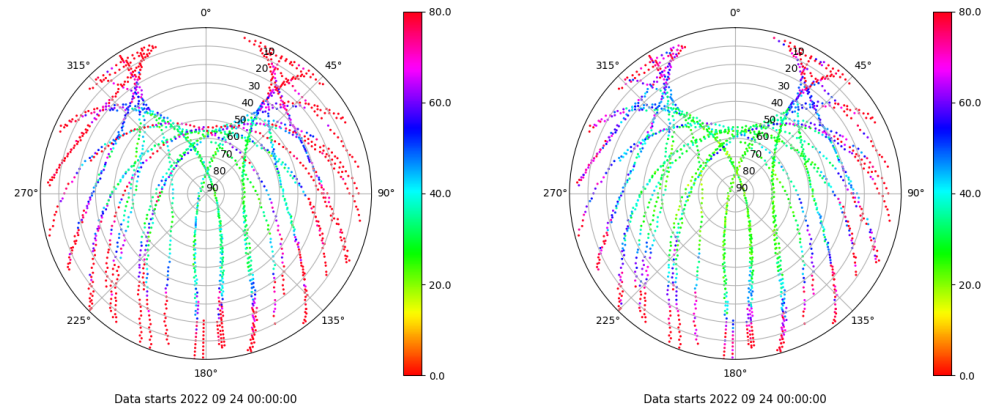
Señal-Ruido GLO L1 y L2

Skyplot for station BADI. Signal to Noise S1C Data file BADI00ESP_R_2022267.xtr Skyplot for station BADI. Signal to Noise S2C Data file BADI00ESP_R_2022267.xtr



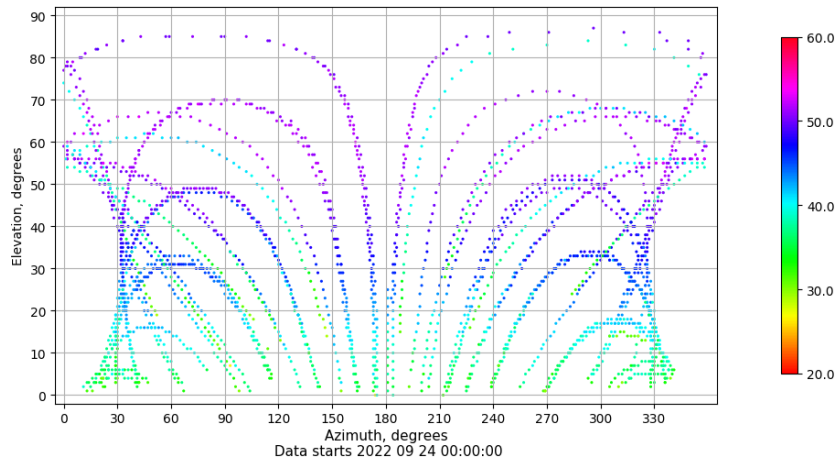
Multipath GLO L1 y L2

Skyplot for station BADI. Parameter M1C Data file BADI00ESP_R_2022267.xtr Skyplot for station BADI. Parameter M2C Data file BADI00ESP_R_2022267.xtr



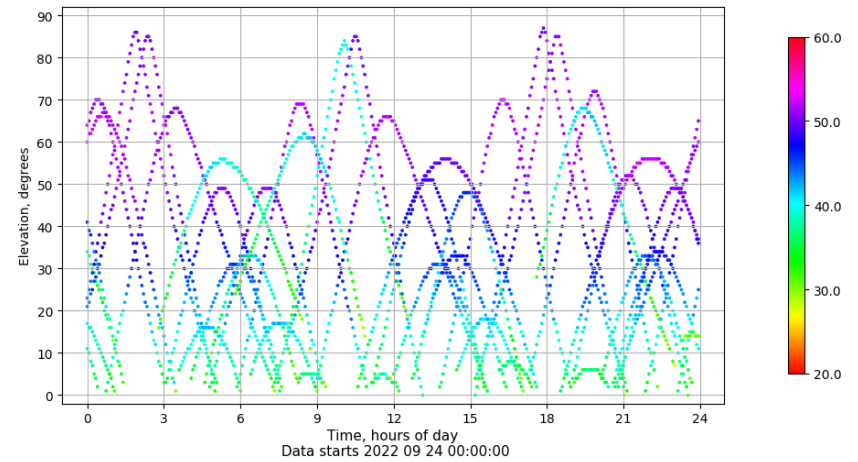
Azimuth-Elevacion

Azimuth-elevation plot for station BADI. Signal to Noise S1C Data file BADI00ESP_R_2022267.xtr



Tiempo-Elevacion

Time-elevation plot for station BADI. Signal to Noise S1C Data file BADI00ESP_R_2022267.xtr

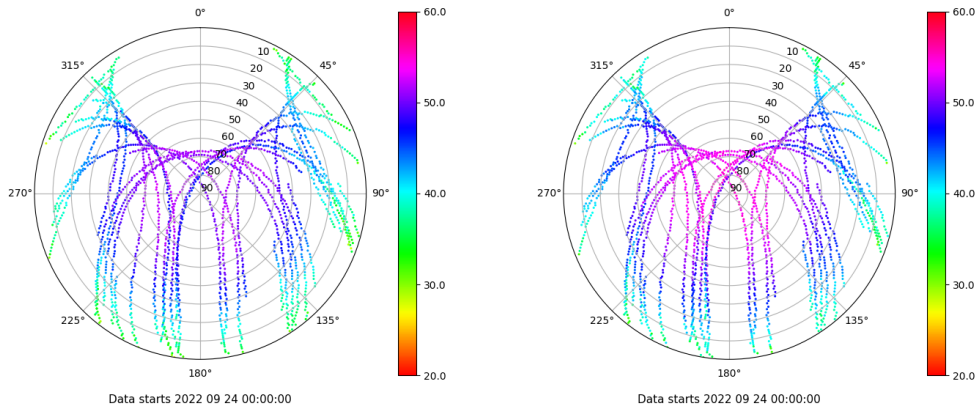


Control de calidad GNSS GAL diario

Estacion: BADJ
 Fecha: 2022 09 24
 Dia del año: 267

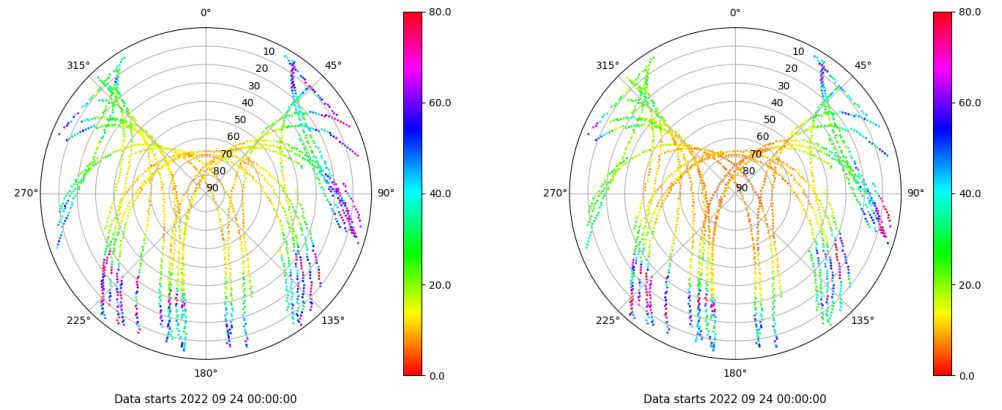
Señal-Ruido GAL E1 y E5

Skyplot for station BADJ. Signal to Noise S1X Data file BADJ00ESP_R_2022267.xtr Skyplot for station BADJ. Signal to Noise S5X Data file BADJ00ESP_R_2022267.xtr



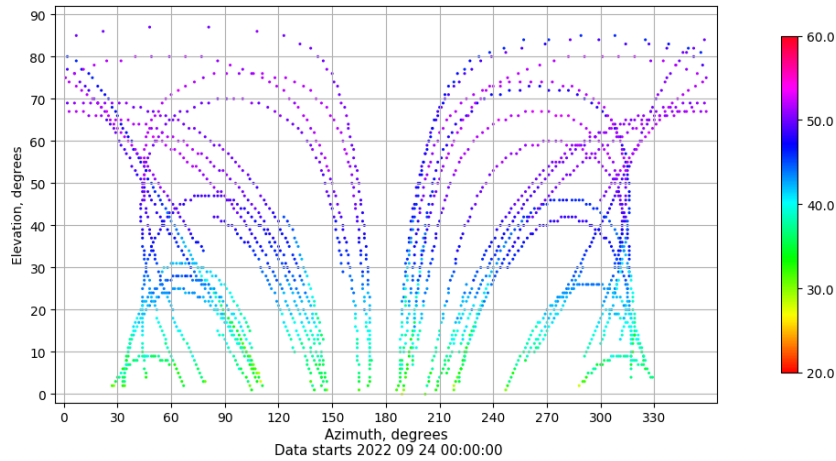
Multipath GAL E1 y E5

Skyplot for station BADJ. Parameter M1X Data file BADJ00ESP_R_2022267.xtr Skyplot for station BADJ. Parameter M5X Data file BADJ00ESP_R_2022267.xtr



Azimuth-Elevacion

Azimuth-elevation plot for station BADJ. Signal to Noise S1X Data file BADJ00ESP_R_2022267.xtr



Tiempo-Elevacion

Time-elevation plot for station BADJ. Signal to Noise S1X Data file BADJ00ESP_R_2022267.xtr

