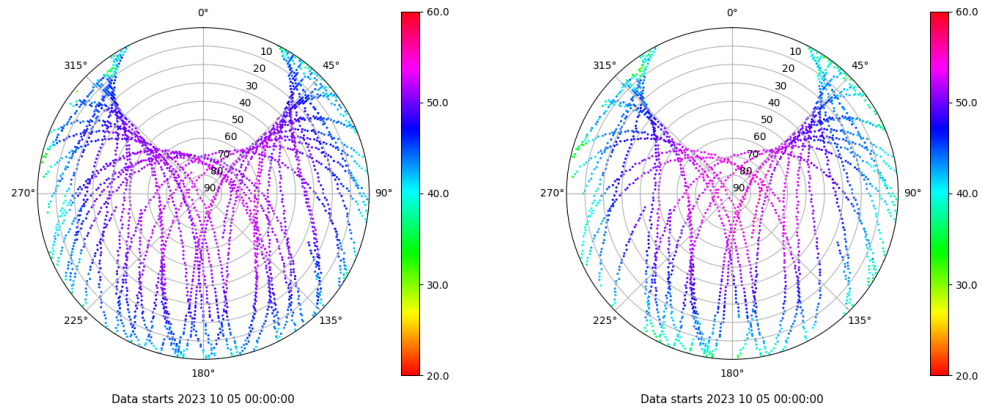


Control de calidad GNSS GPS diario

Estacion: ALOR
 Fecha: 2023 10 05
 Dia del año: 278

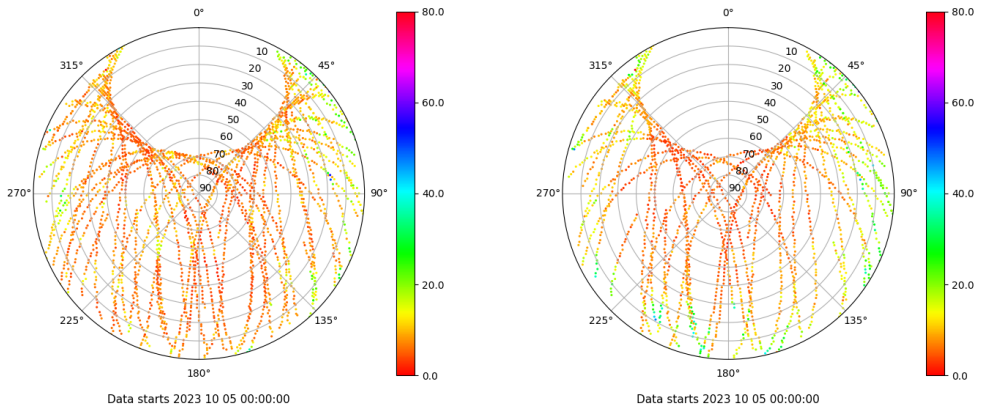
Señal-Ruido GPS L1 y L2

Skyplot for station ALOR. Signal to Noise S1C Data file ALOR00ESP_R_2023278.xtr Skyplot for station ALOR. Signal to Noise S2S Data file ALOR00ESP_R_2023278.xtr



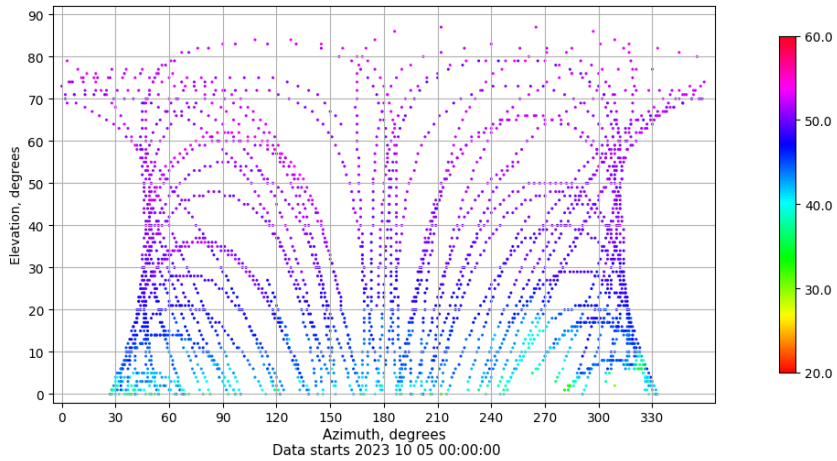
Multipath GPS L1 y L2

Skyplot for station ALOR. Parameter M1C Data file ALOR00ESP_R_2023278.xtr Skyplot for station ALOR. Parameter M2S Data file ALOR00ESP_R_2023278.xtr



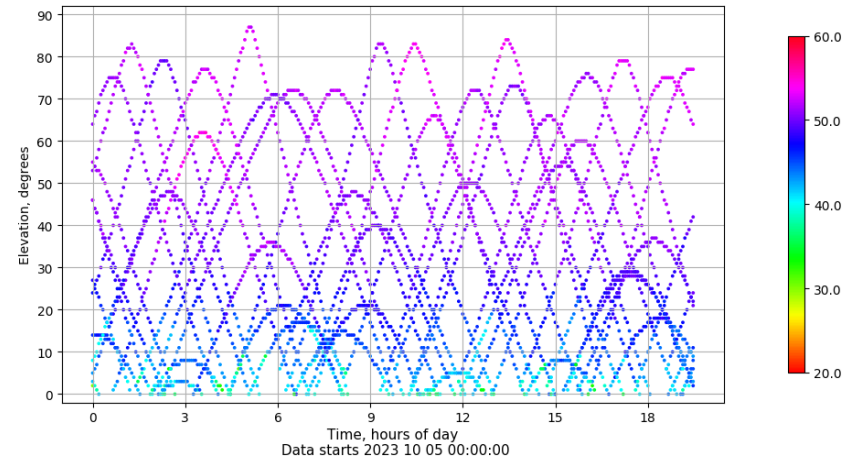
Azimut-Elevacion

Azimuth-elevation plot for station ALOR. Signal to Noise S1C Data file ALOR00ESP_R_2023278.xtr



Tiempo-Elevacion

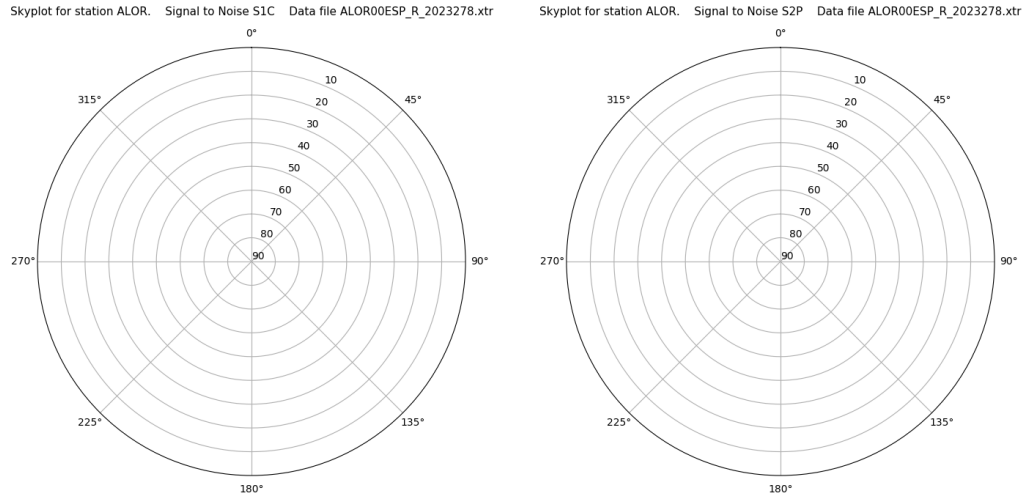
Time-elevation plot for station ALOR. Signal to Noise S1C Data file ALOR00ESP_R_2023278.xtr



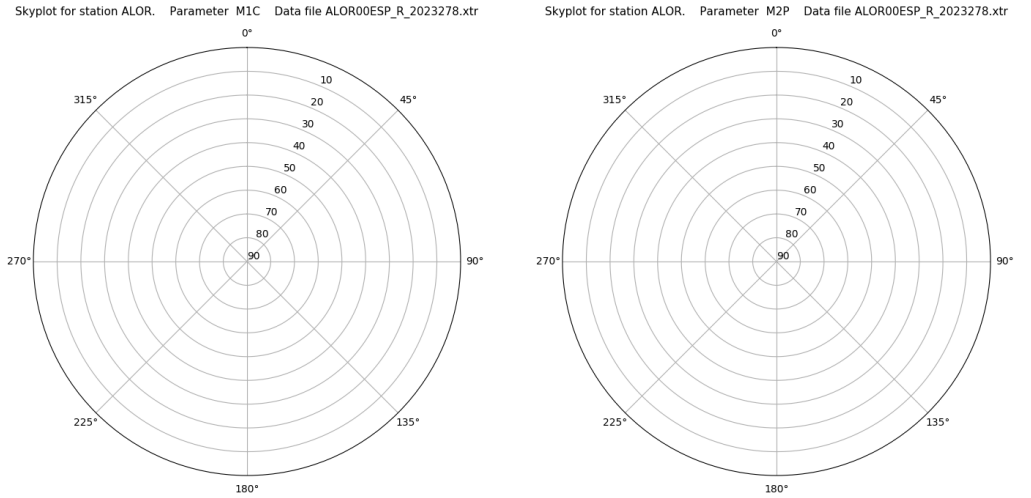
Control de calidad GNSS GLO diario

Estacion: ALOR
 Fecha: 2023 10 05
 Dia del año: 278

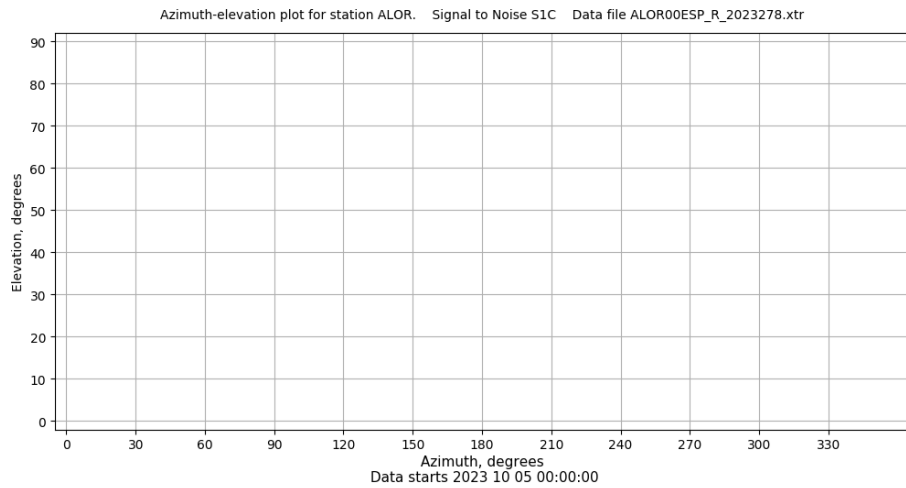
Señal-Ruido GLO L1 y L2



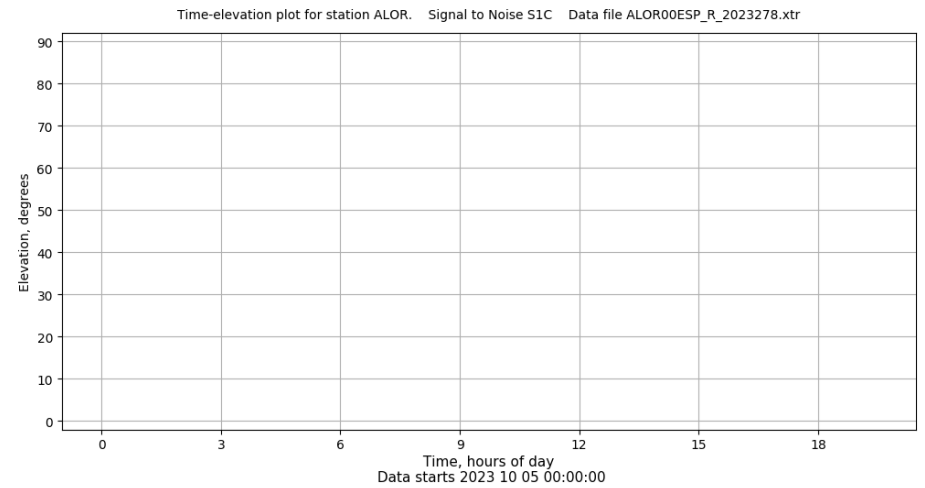
Multipath GLO L1 y L2



Azimut-Elevacion



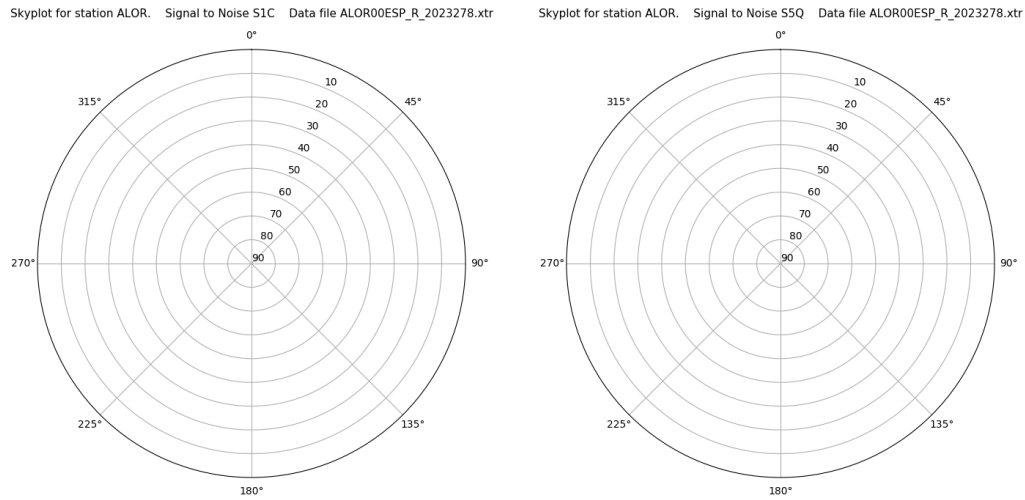
Tiempo-Elevacion



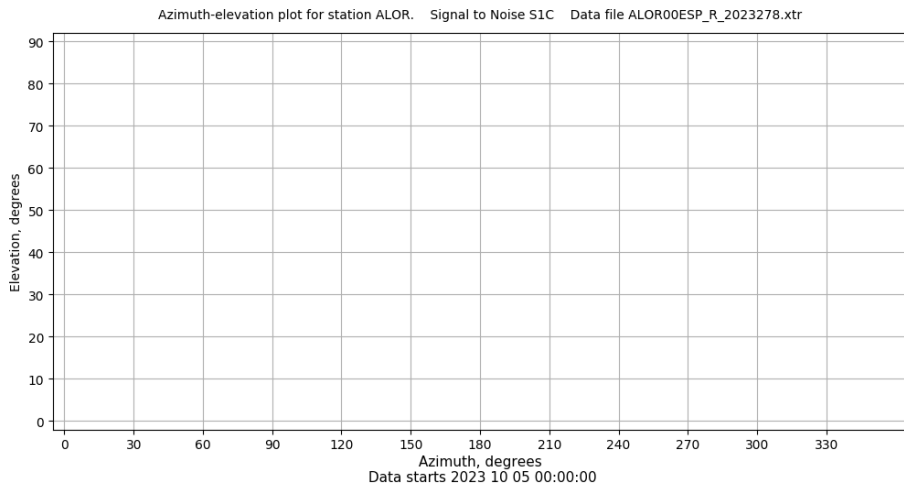
Control de calidad GNSS GAL diario

Estacion: ALOR
 Fecha: 2023 10 05
 Dia del año: 278

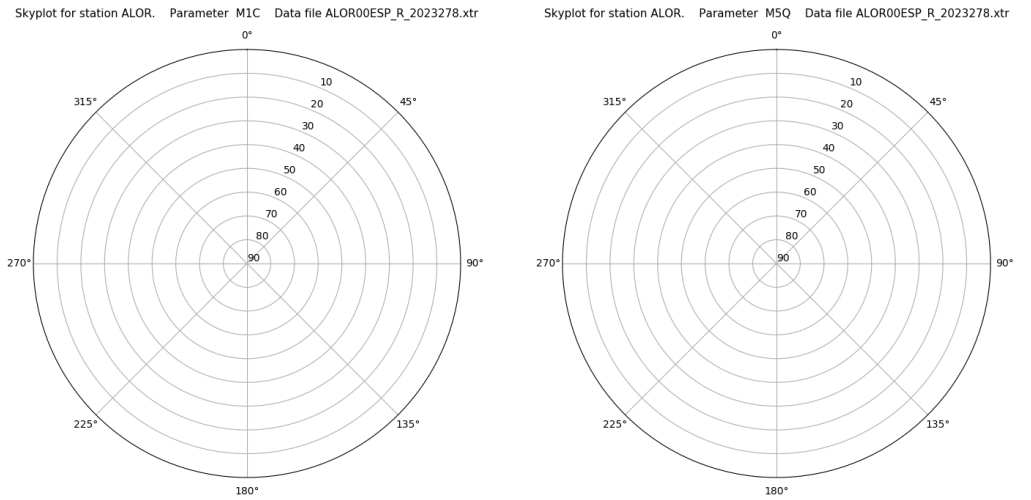
Señal-Ruido GAL E1 y E5



Azimut-Elevacion



Multipath GAL E1 y E5



Tiempo-Elevacion

