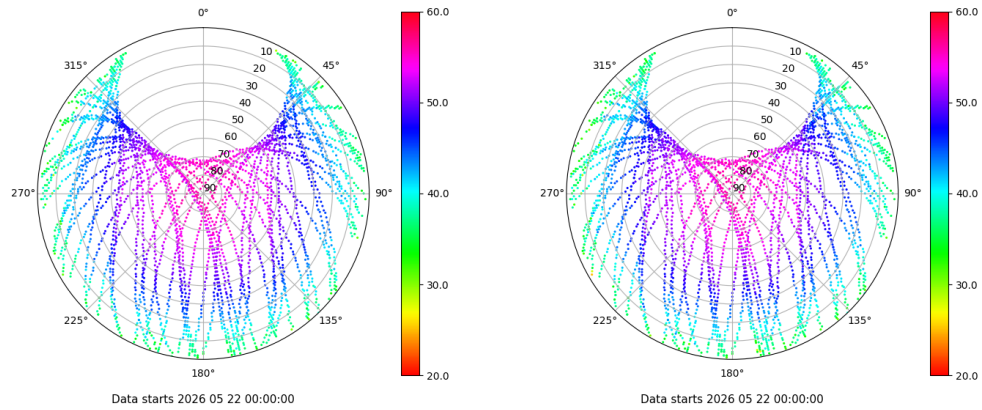


Control de calidad GNSS GPS diario

Estacion: ALMZ
 Fecha: 2026 05 22
 Dia del año: 142

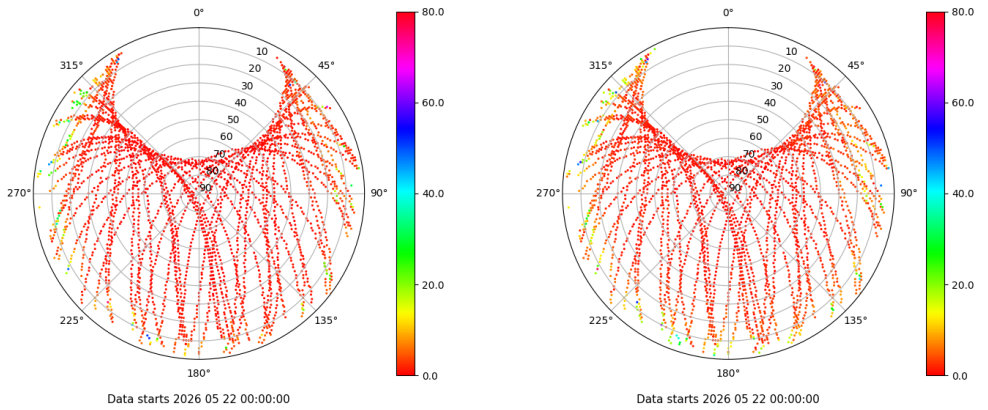
Señal-Ruido GPS L1 y L2

Skyplot for station ALMZ. Signal to Noise S1C Data file ALMZ00ESP_R_2026142.xtr Skyplot for station ALMZ. Signal to Noise S2W Data file ALMZ00ESP_R_2026142.xtr



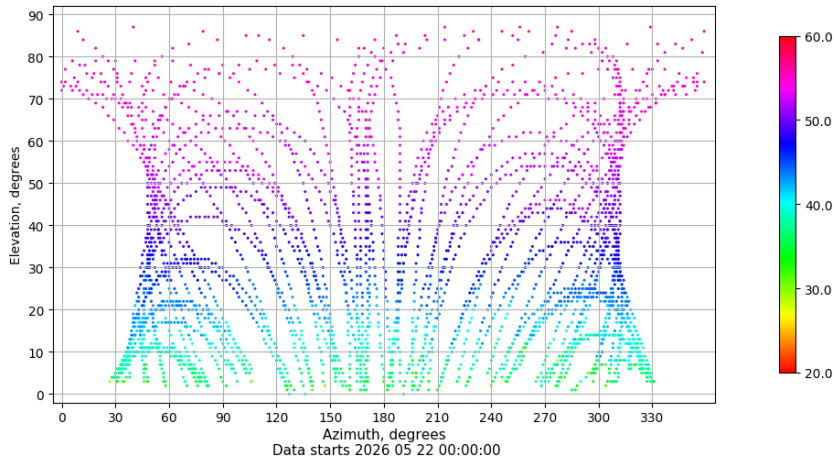
Multipath GPS L1 y L2

Skyplot for station ALMZ. Parameter M1C Data file ALMZ00ESP_R_2026142.xtr Skyplot for station ALMZ. Parameter M2W Data file ALMZ00ESP_R_2026142.xtr



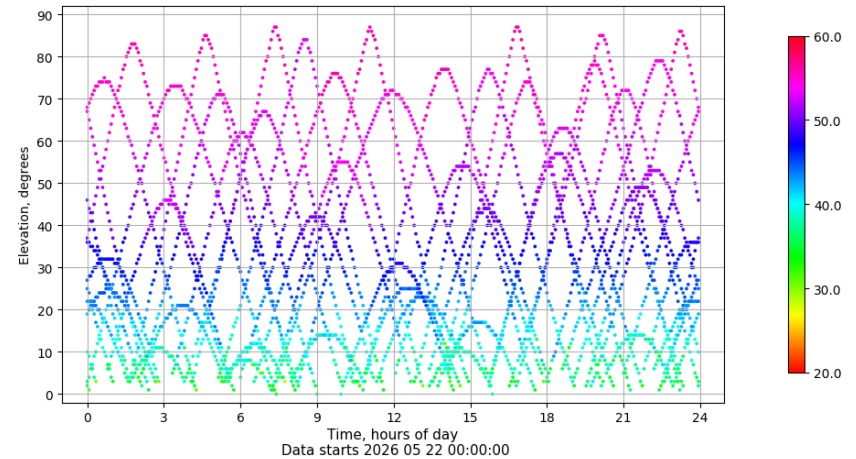
Azimut-Elevacion

Azimuth-elevation plot for station ALMZ. Signal to Noise S1C Data file ALMZ00ESP_R_2026142.xtr



Tiempo-Elevacion

Time-elevation plot for station ALMZ. Signal to Noise S1C Data file ALMZ00ESP_R_2026142.xtr

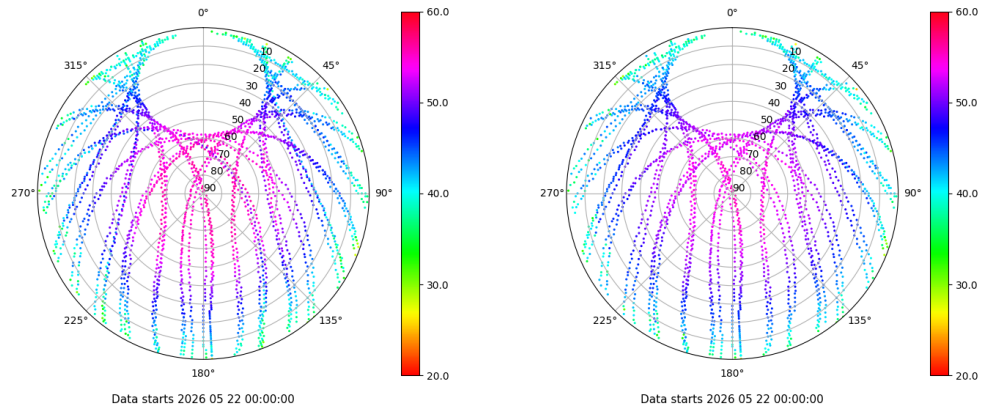


Control de calidad GNSS GLO diario

Estacion: ALMZ
 Fecha: 2026 05 22
 Dia del año: 142

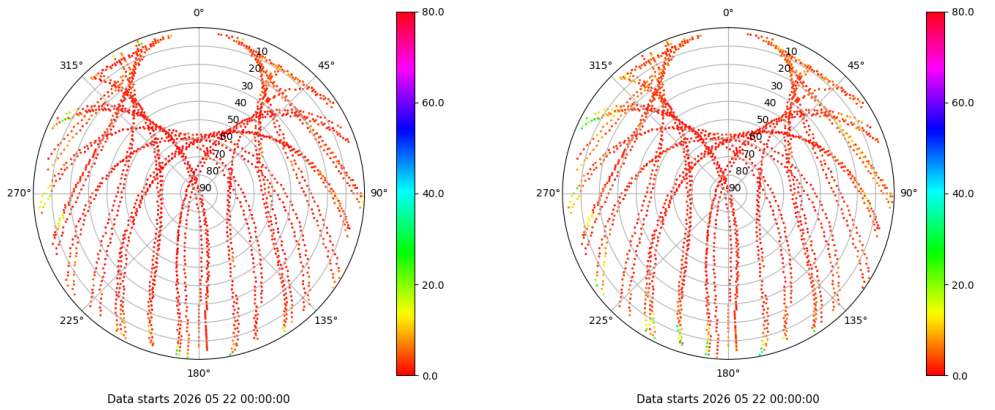
Señal-Ruido GLO L1 y L2

Skyplot for station ALMZ. Signal to Noise S1C Data file ALMZ00ESP_R_2026142.xtr
 Skyplot for station ALMZ. Signal to Noise S2P Data file ALMZ00ESP_R_2026142.xtr



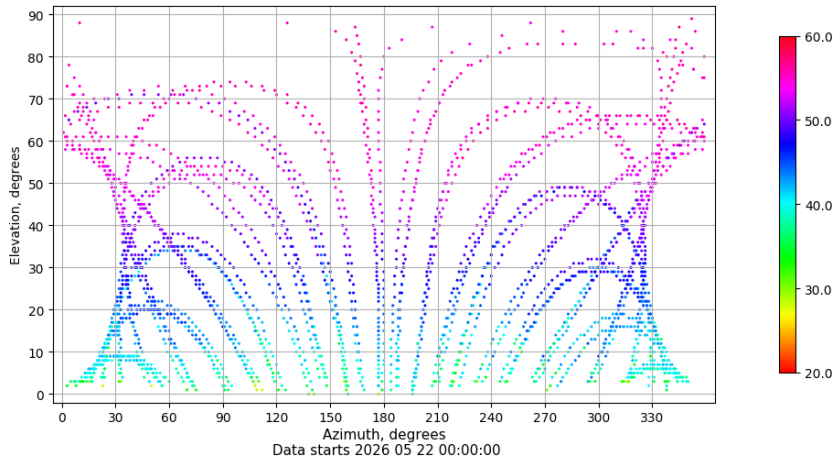
Multipath GLO L1 y L2

Skyplot for station ALMZ. Parameter M1C Data file ALMZ00ESP_R_2026142.xtr
 Skyplot for station ALMZ. Parameter M2P Data file ALMZ00ESP_R_2026142.xtr



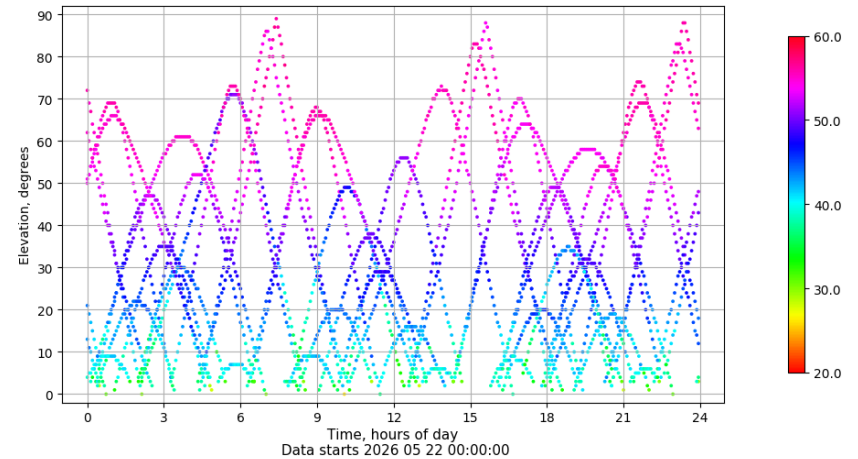
Azimut-Elevacion

Azimuth-elevation plot for station ALMZ. Signal to Noise S1C Data file ALMZ00ESP_R_2026142.xtr



Tiempo-Elevacion

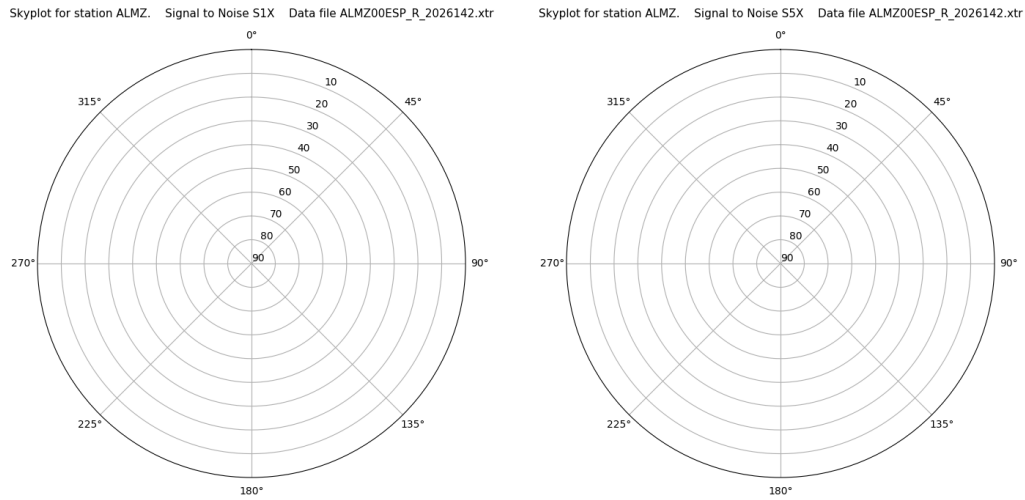
Time-elevation plot for station ALMZ. Signal to Noise S1C Data file ALMZ00ESP_R_2026142.xtr



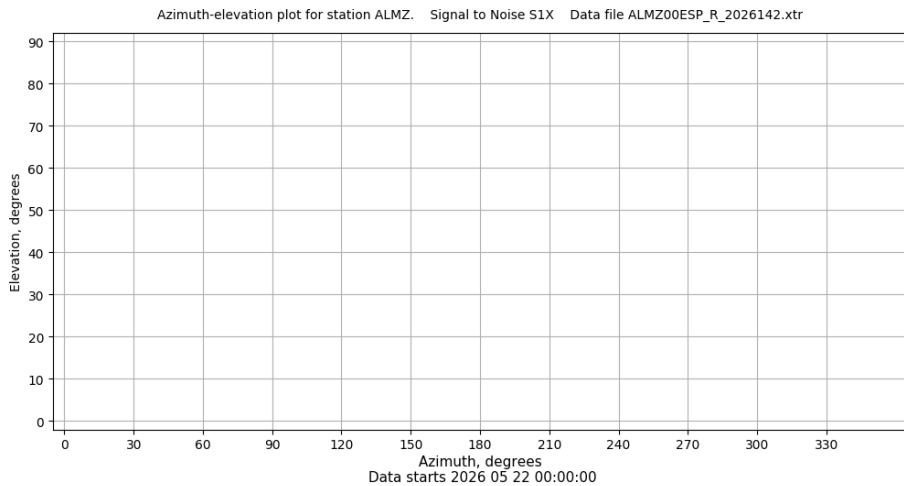
Control de calidad GNSS GAL diario

Estacion: ALMZ
 Fecha: 2026 05 22
 Dia del año: 142

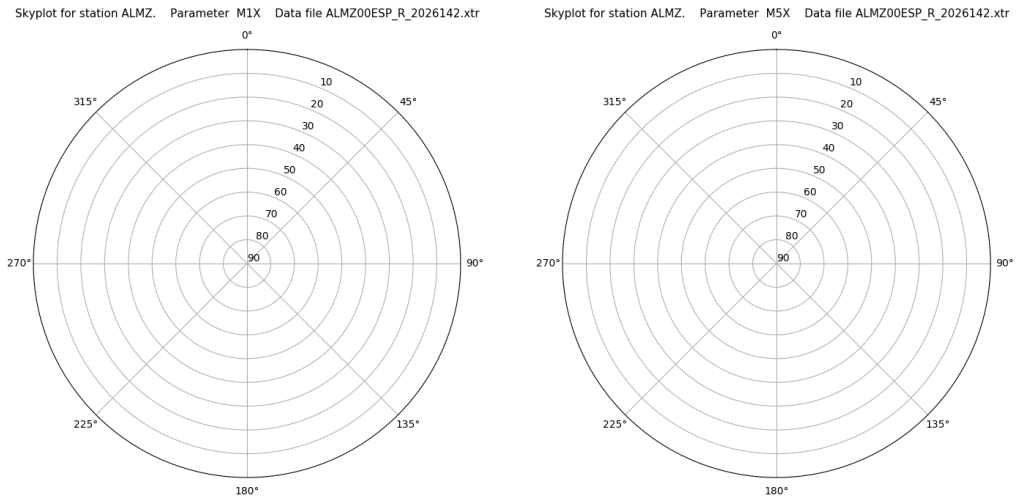
Señal-Ruido GAL E1 y E5



Azimut-Elevacion



Multipath GAL E1 y E5



Tiempo-Elevacion

