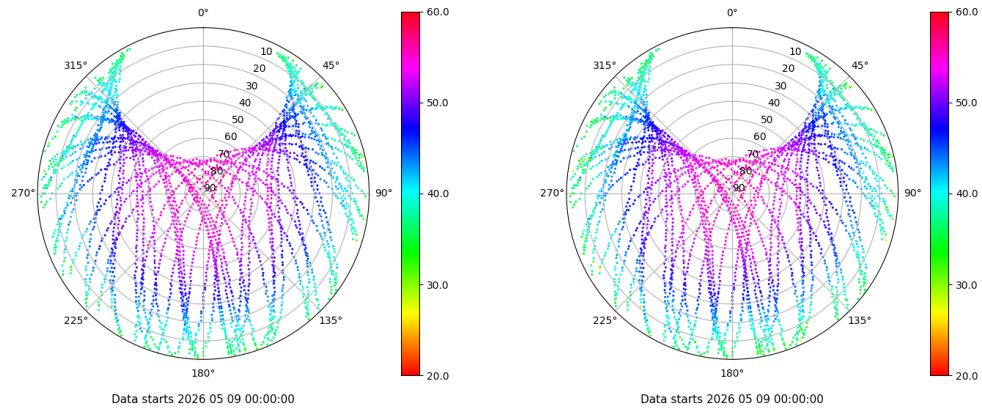


Control de calidad GNSS GPS diario

Estacion: ALMZ
 Fecha: 2026 05 09
 Día del año: 129

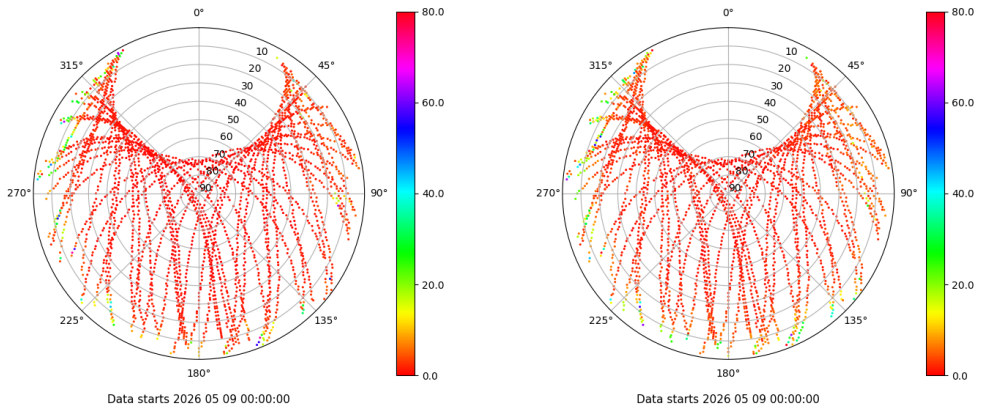
Señal-Ruido GPS L1 y L2

Skyplot for station ALMZ. Signal to Noise S1C Data file ALMZ00ESP_R_2026129.xtr Skyplot for station ALMZ. Signal to Noise S2W Data file ALMZ00ESP_R_2026129.xtr



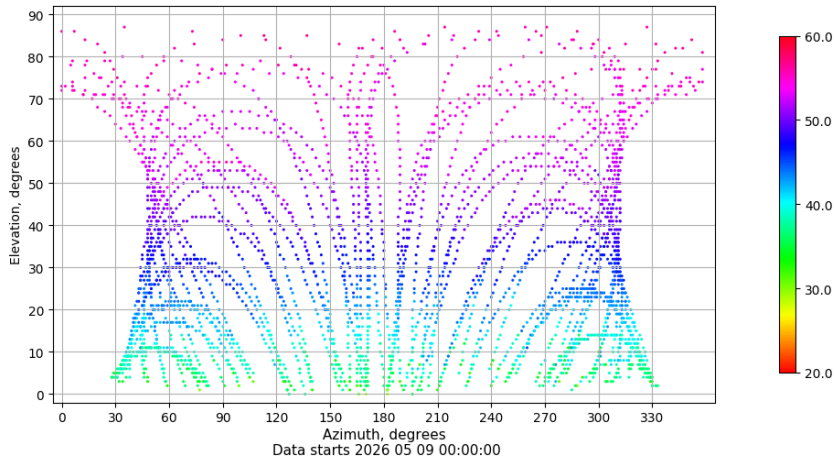
Multipath GPS L1 y L2

Skyplot for station ALMZ. Parameter M1C Data file ALMZ00ESP_R_2026129.xtr Skyplot for station ALMZ. Parameter M2W Data file ALMZ00ESP_R_2026129.xtr



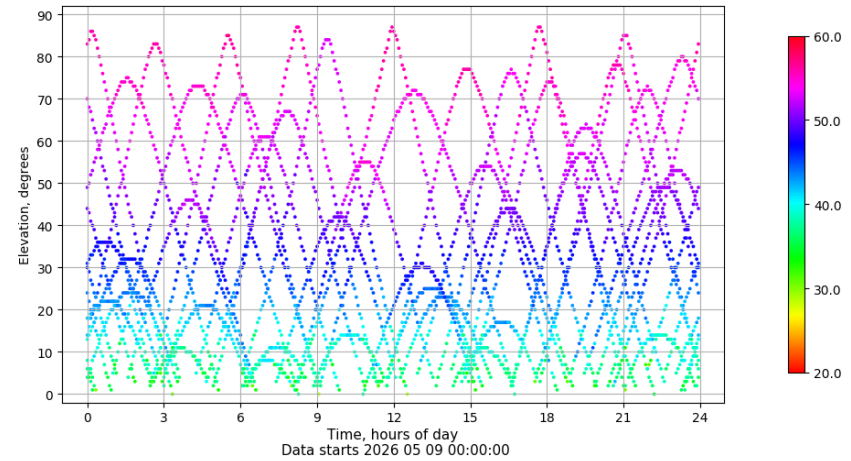
Azimuth-Elevacion

Azimuth-elevation plot for station ALMZ. Signal to Noise S1C Data file ALMZ00ESP_R_2026129.xtr



Tiempo-Elevacion

Time-elevation plot for station ALMZ. Signal to Noise S1C Data file ALMZ00ESP_R_2026129.xtr

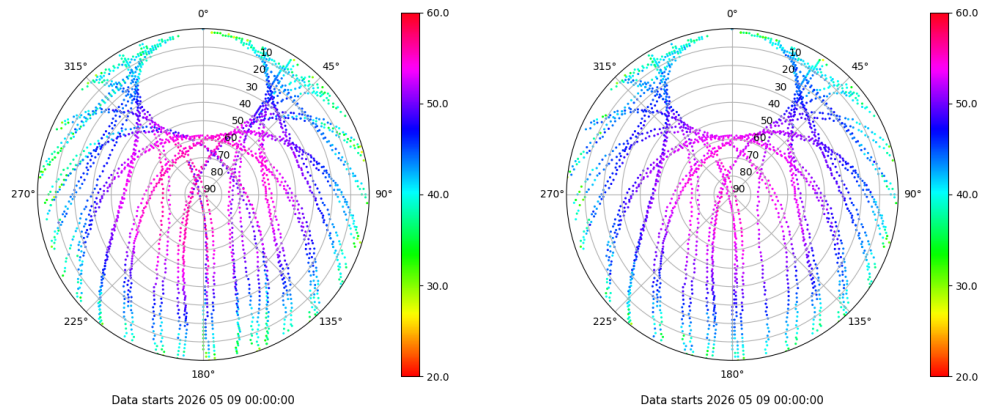


Control de calidad GNSS GLO diario

Estacion: ALMZ
 Fecha: 2026 05 09
 Dia del año: 129

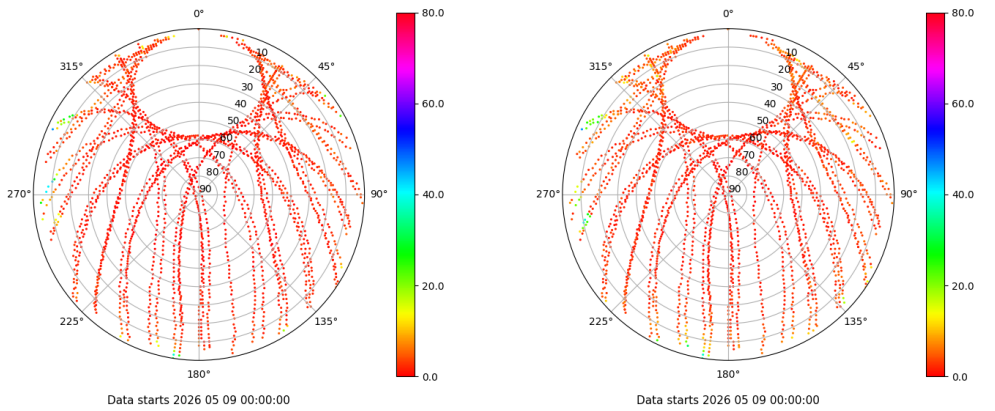
Señal-Ruido GLO L1 y L2

Skyplot for station ALMZ. Signal to Noise S1C Data file ALMZ00ESP_R_2026129.xtr Skyplot for station ALMZ. Signal to Noise S2P Data file ALMZ00ESP_R_2026129.xtr



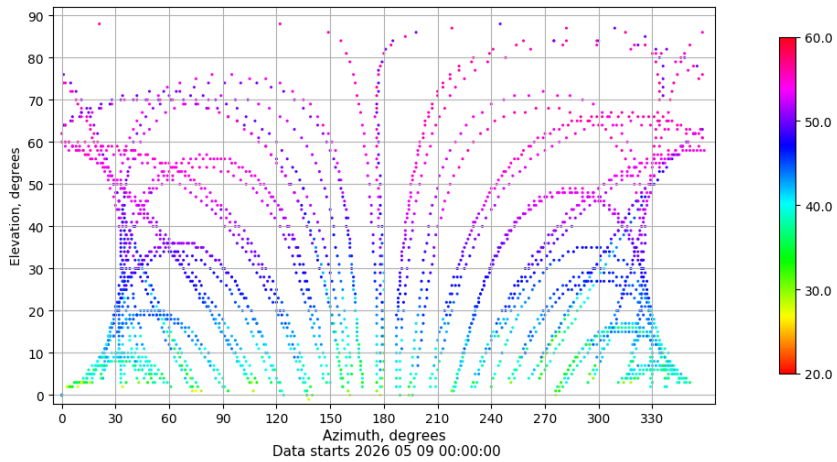
Multipath GLO L1 y L2

Skyplot for station ALMZ. Parameter M1C Data file ALMZ00ESP_R_2026129.xtr Skyplot for station ALMZ. Parameter M2P Data file ALMZ00ESP_R_2026129.xtr



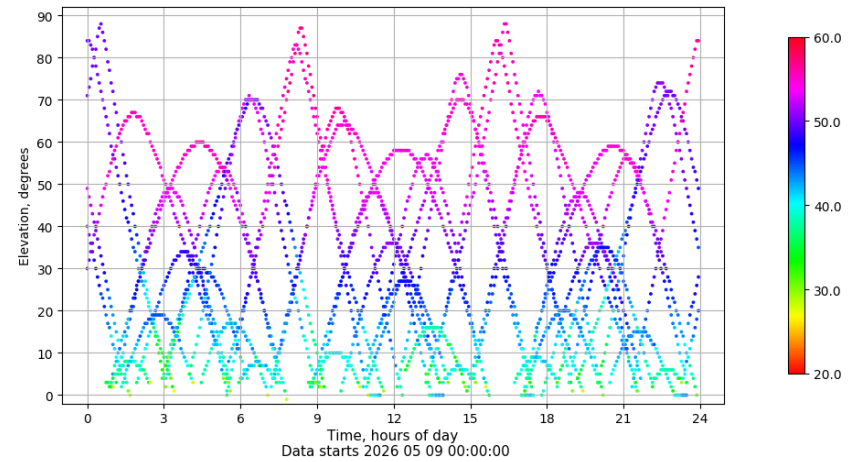
Azimuth-Elevacion

Azimuth-elevation plot for station ALMZ. Signal to Noise S1C Data file ALMZ00ESP_R_2026129.xtr



Tiempo-Elevacion

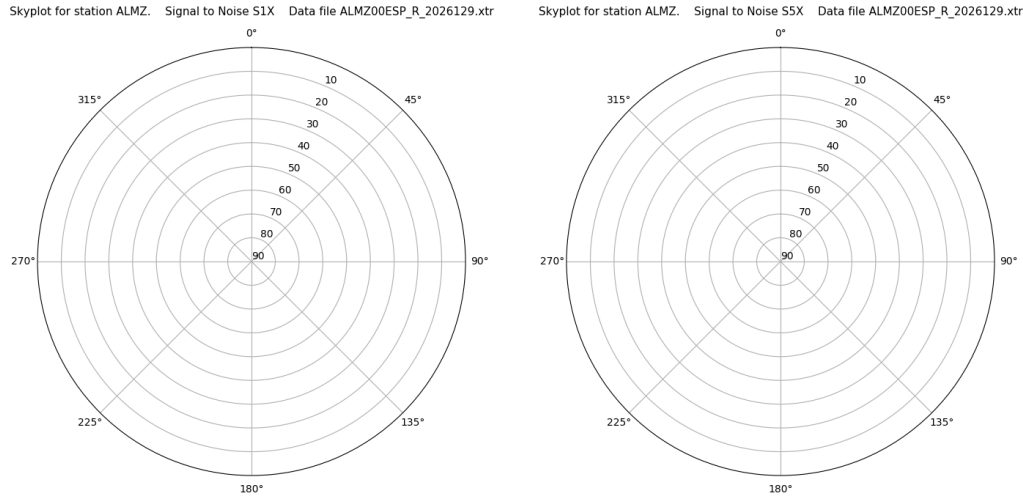
Time-elevation plot for station ALMZ. Signal to Noise S1C Data file ALMZ00ESP_R_2026129.xtr



Control de calidad GNSS GAL diario

Estacion: ALMZ
 Fecha: 2026 05 09
 Dia del año: 129

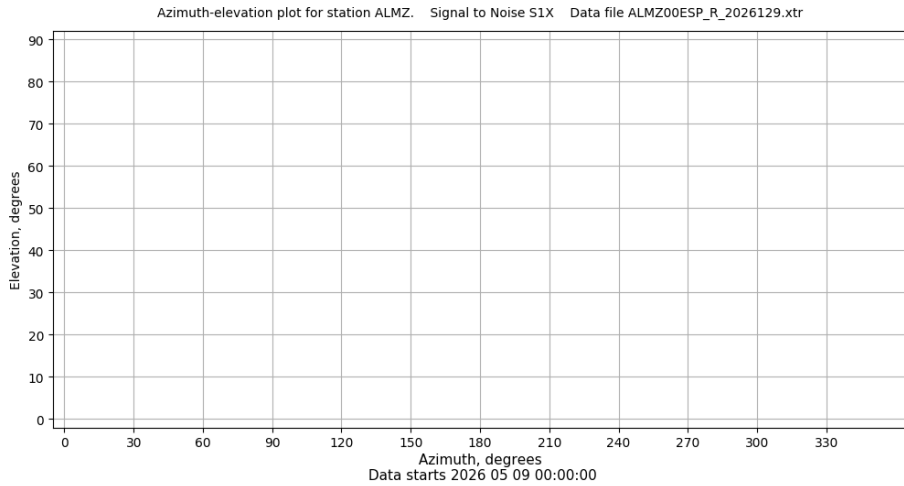
Señal-Ruido GAL E1 y E5



Data starts 2026 05 09 00:00:00

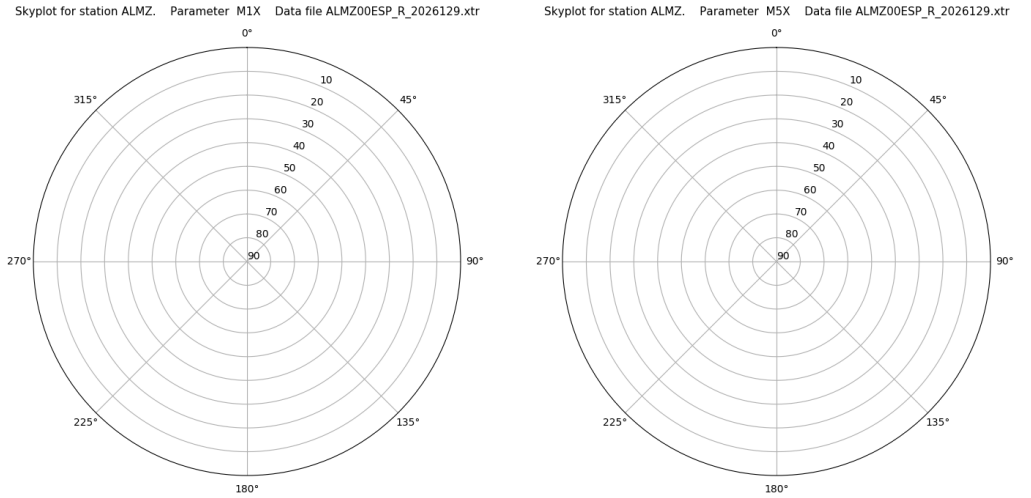
Data starts 2026 05 09 00:00:00

Azimut-Elevacion



Data starts 2026 05 09 00:00:00

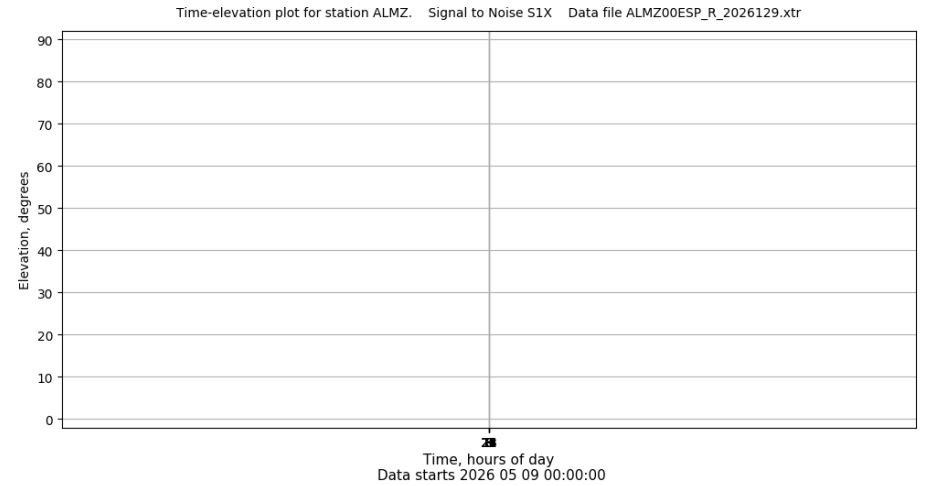
Multipath GAL E1 y E5



Data starts 2026 05 09 00:00:00

Data starts 2026 05 09 00:00:00

Tiempo-Elevacion



Data starts 2026 05 09 00:00:00