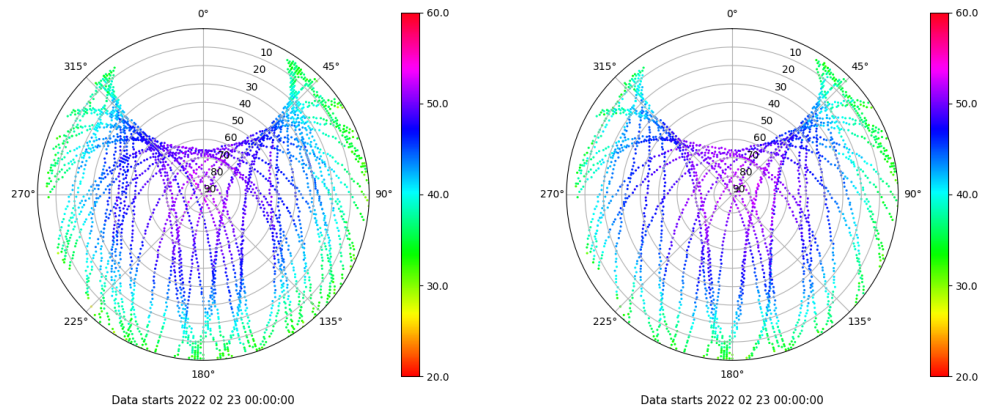


Control de calidad GNSS GPS diario

Estacion: ALME
 Fecha: 2022 02 23
 Dia del año: 054

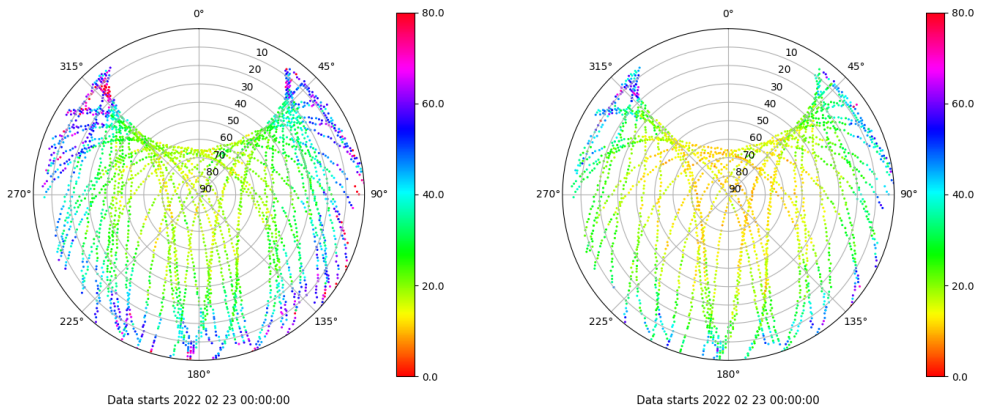
Señal-Ruido GPS L1 y L2

Skyplot for station ALME. Signal to Noise S1C Data file ALME00ESP_R_2022054.xtr Skyplot for station ALME. Signal to Noise S2X Data file ALME00ESP_R_2022054.xtr



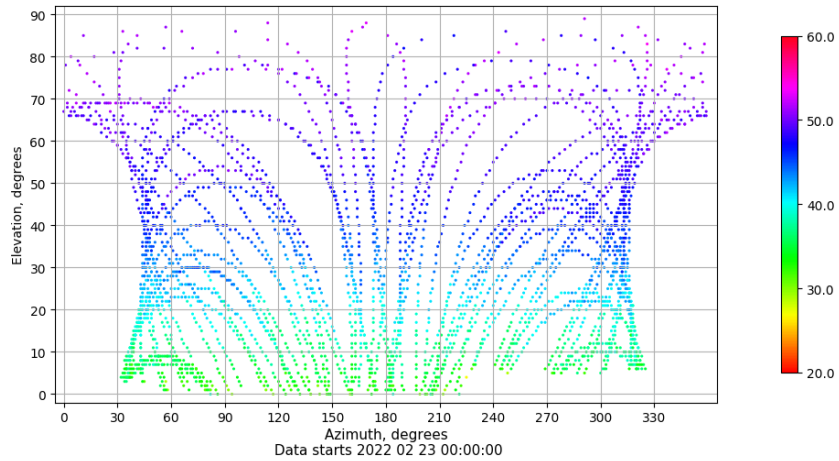
Multipath GPS L1 y L2

Skyplot for station ALME. Parameter M1C Data file ALME00ESP_R_2022054.xtr Skyplot for station ALME. Parameter M2X Data file ALME00ESP_R_2022054.xtr



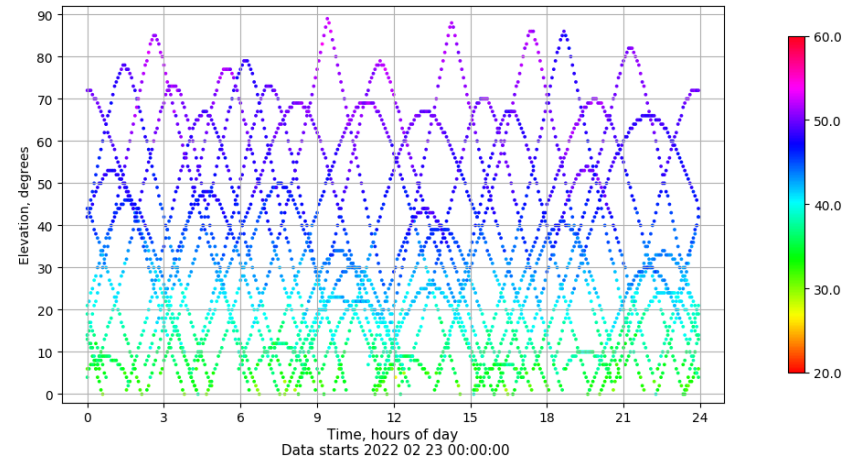
Azimuth-Elevacion

Azimuth-elevation plot for station ALME. Signal to Noise S1C Data file ALME00ESP_R_2022054.xtr



Tiempo-Elevacion

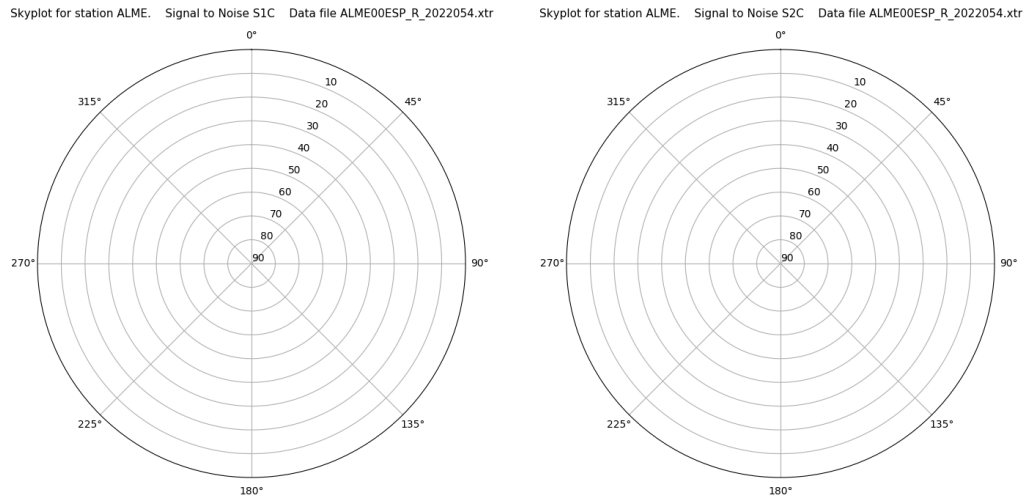
Time-elevation plot for station ALME. Signal to Noise S1C Data file ALME00ESP_R_2022054.xtr



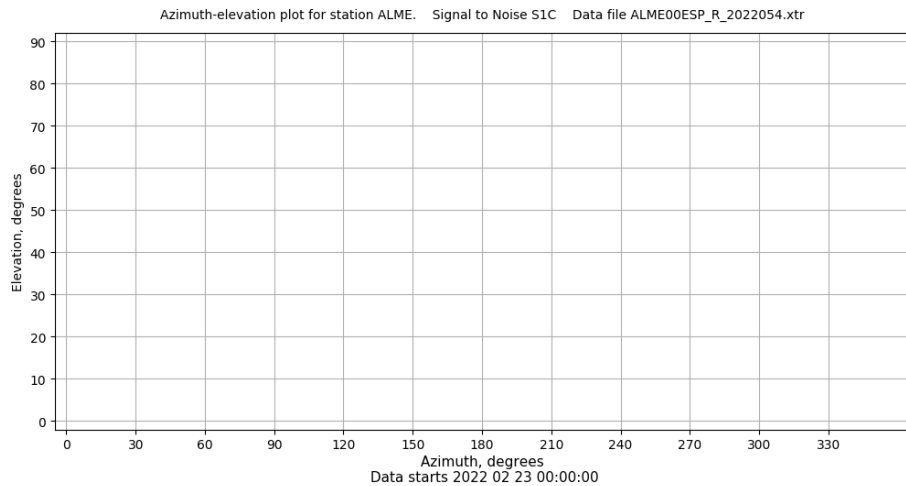
Control de calidad GNSS GLO diario

Estacion: ALME
 Fecha: 2022 02 23
 Dia del año: 054

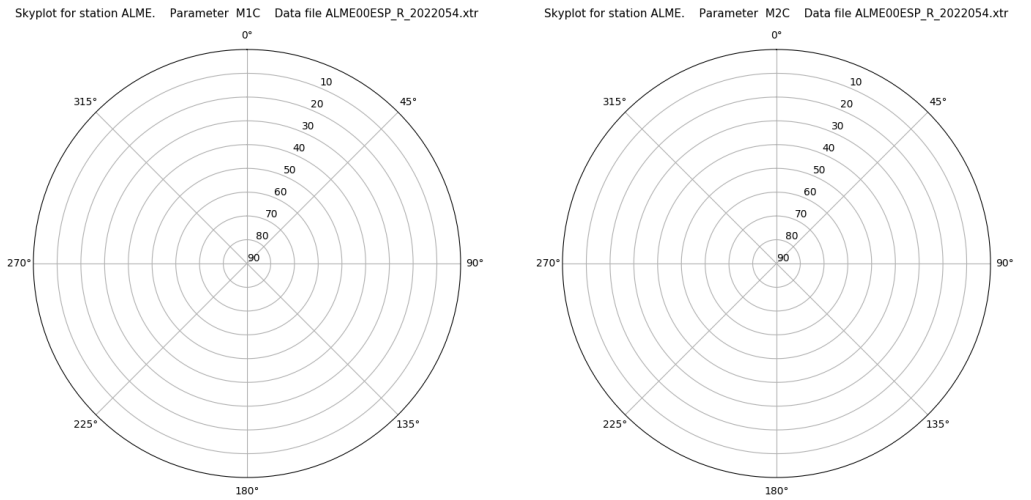
Señal-Ruido GLO L1 y L2



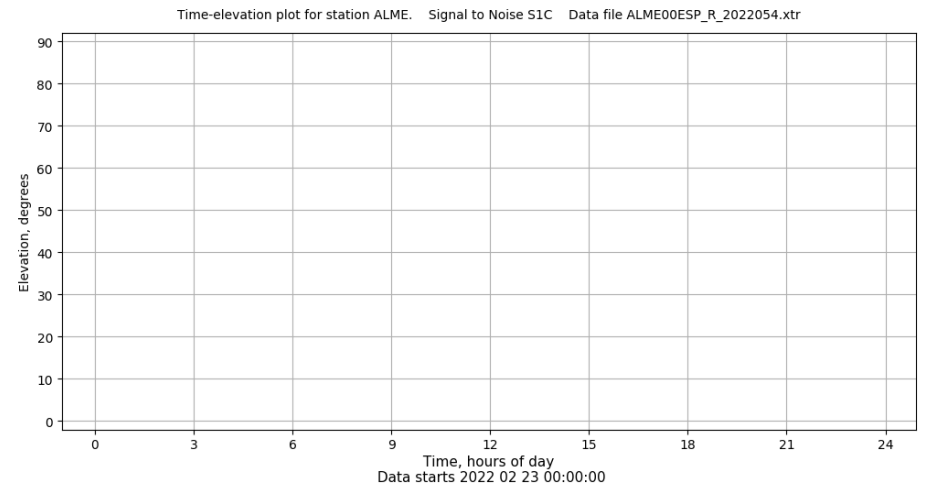
Azimut-Elevacion



Multipath GLO L1 y L2



Tiempo-Elevacion

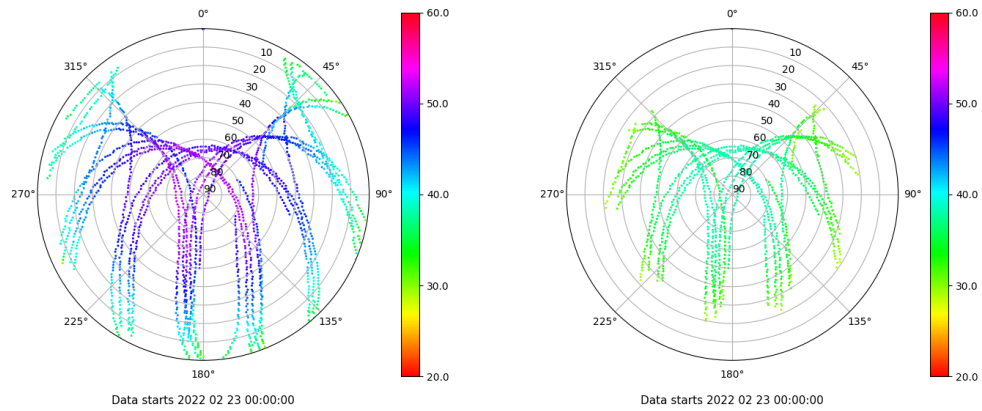


Control de calidad GNSS GAL diario

Estacion: ALME
 Fecha: 2022 02 23
 Dia del año: 054

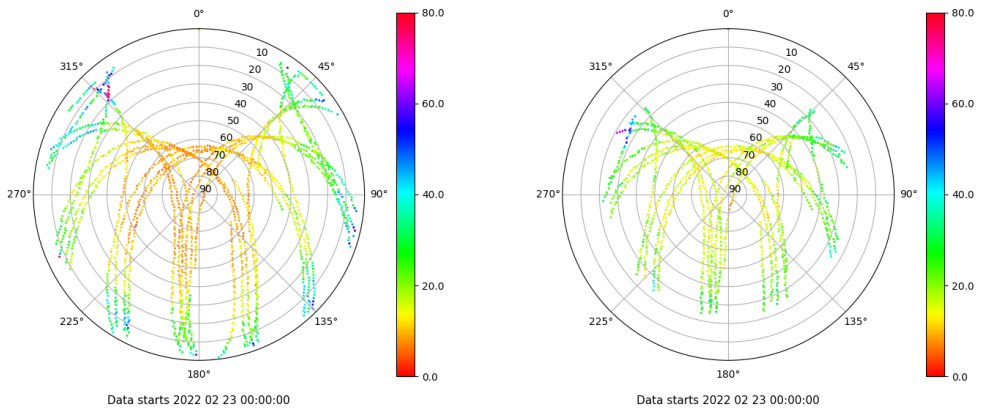
Señal-Ruido GAL E1 y E5

Skyplot for station ALME. Signal to Noise S1X Data file ALME00ESP_R_2022054.xtr Skyplot for station ALME. Signal to Noise S5X Data file ALME00ESP_R_2022054.xtr



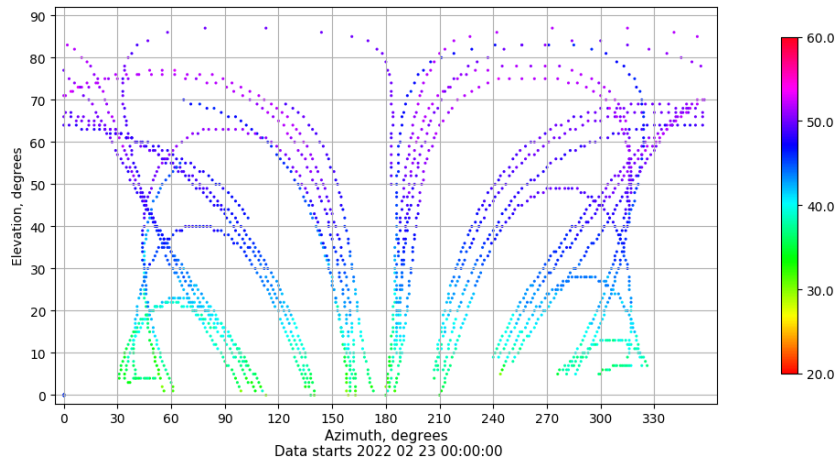
Multipath GAL E1 y E5

Skyplot for station ALME. Parameter M1X Data file ALME00ESP_R_2022054.xtr Skyplot for station ALME. Parameter M5X Data file ALME00ESP_R_2022054.xtr



Azimuth-Elevacion

Azimuth-elevation plot for station ALME. Signal to Noise S1X Data file ALME00ESP_R_2022054.xtr



Tiempo-Elevacion

Time-elevation plot for station ALME. Signal to Noise S1X Data file ALME00ESP_R_2022054.xtr

