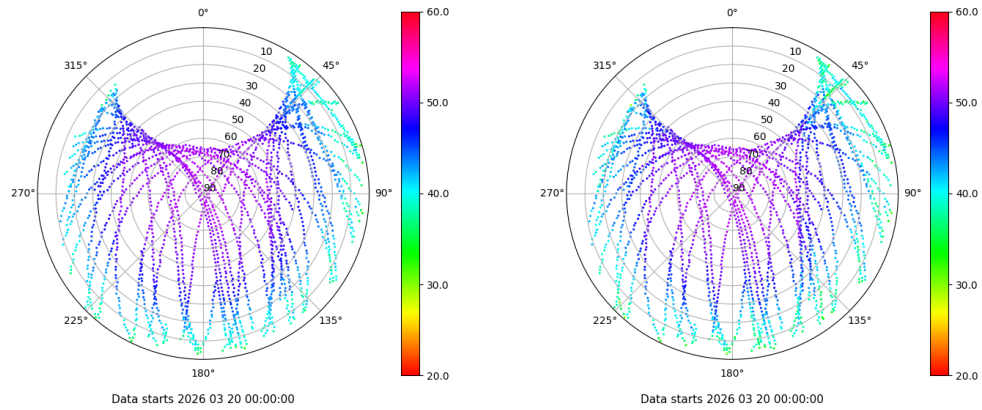


Control de calidad GNSS GPS diario

Estacion: ALM1
 Fecha: 2026 03 20
 Dia del año: 079

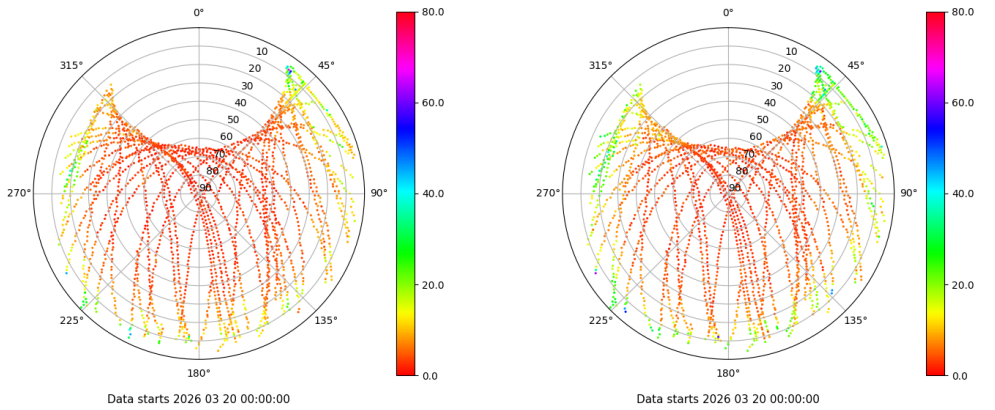
Señal-Ruido GPS L1 y L2

Skyplot for station ALM1. Signal to Noise S1C Data file ALM100ESP_R_2026079.xtr Skyplot for station ALM1. Signal to Noise S2W Data file ALM100ESP_R_2026079.xtr



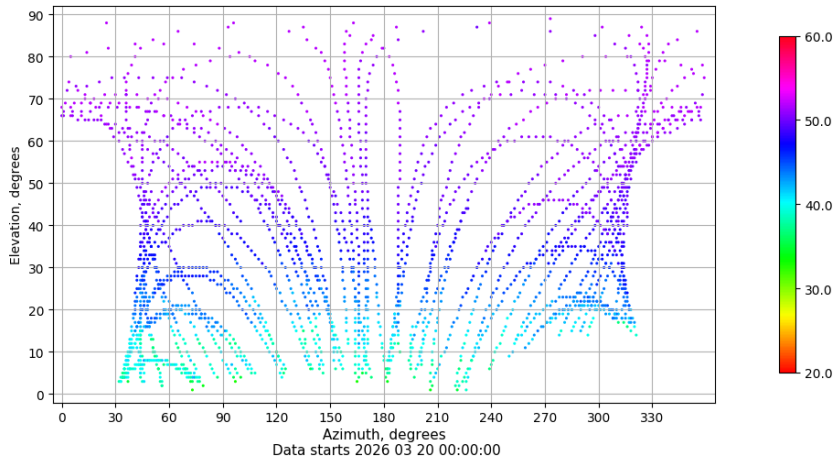
Multipath GPS L1 y L2

Skyplot for station ALM1. Parameter M1C Data file ALM100ESP_R_2026079.xtr Skyplot for station ALM1. Parameter M2W Data file ALM100ESP_R_2026079.xtr



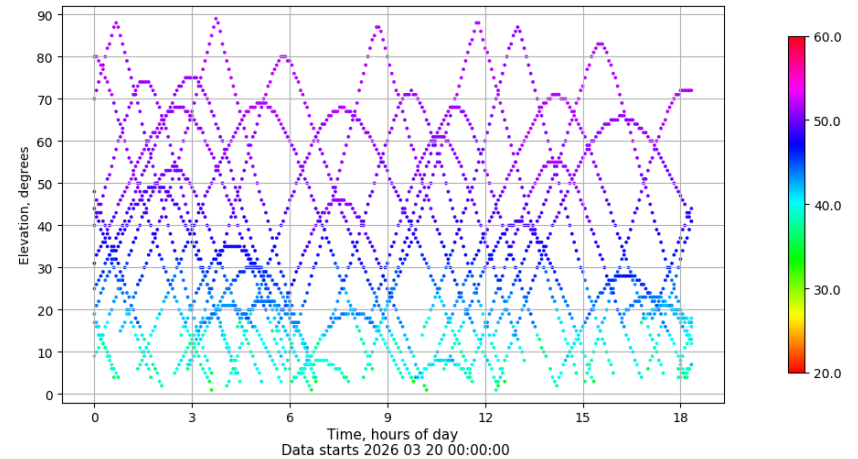
Azimuth-Elevacion

Azimuth-elevation plot for station ALM1. Signal to Noise S1C Data file ALM100ESP_R_2026079.xtr



Tiempo-Elevacion

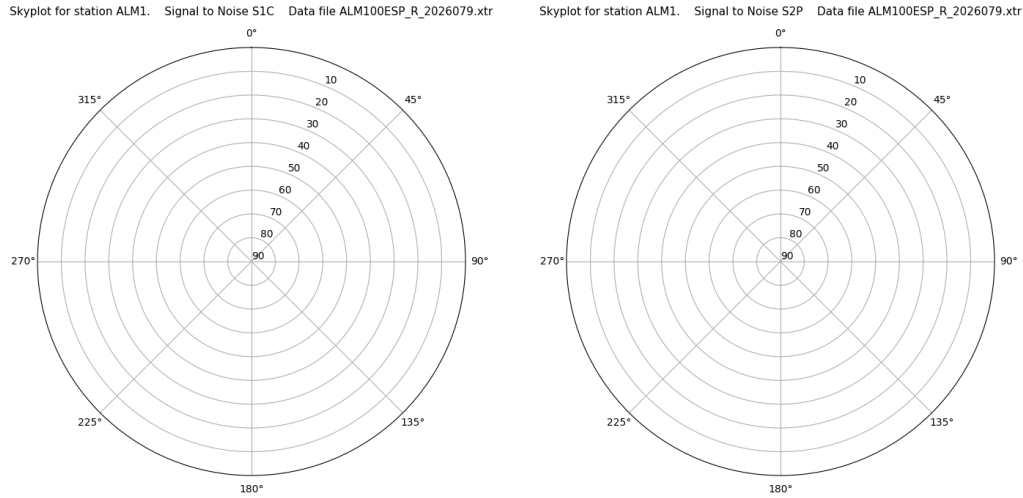
Time-elevation plot for station ALM1. Signal to Noise S1C Data file ALM100ESP_R_2026079.xtr



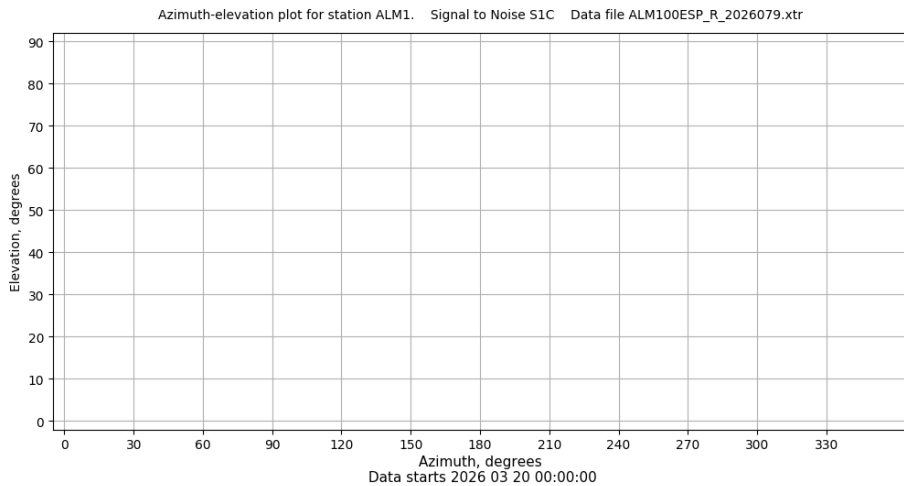
Control de calidad GNSS GLO diario

Estacion: ALM1
 Fecha: 2026 03 20
 Dia del año: 079

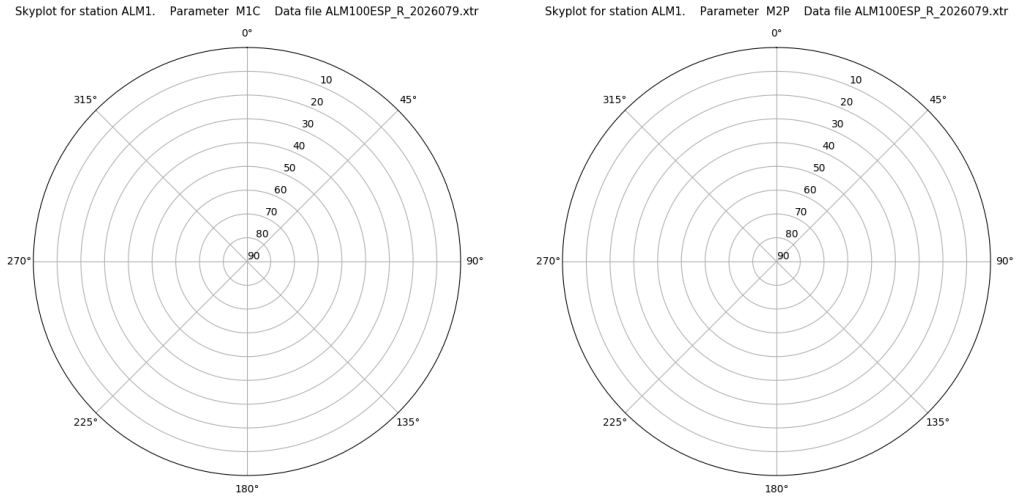
Señal-Ruido GLO L1 y L2



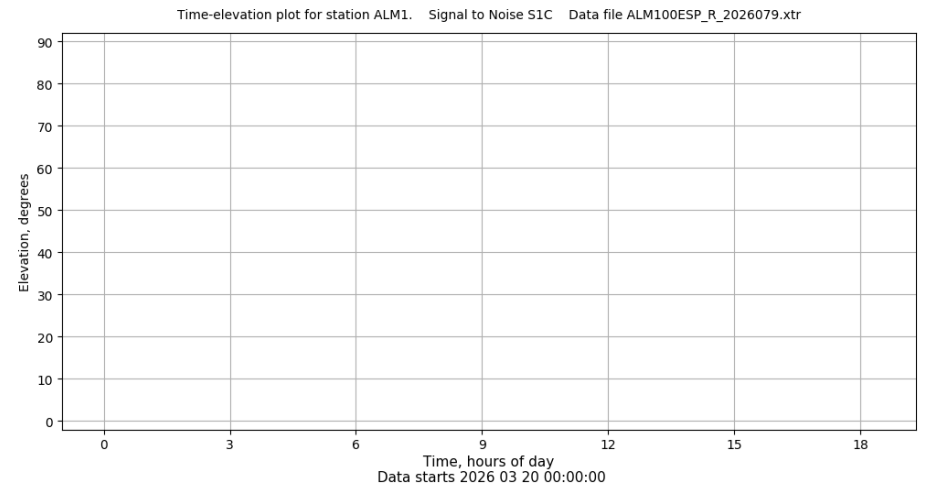
Azimut-Elevacion



Multipath GLO L1 y L2



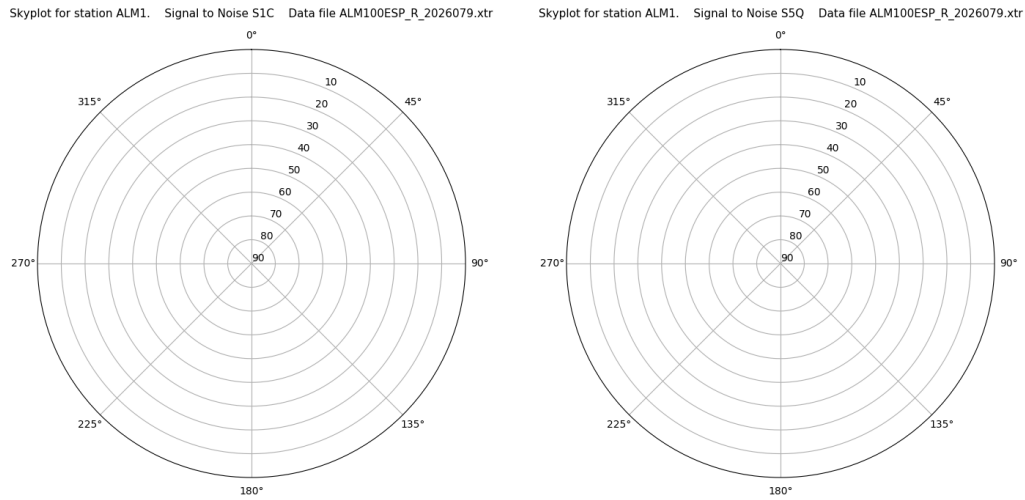
Tiempo-Elevacion



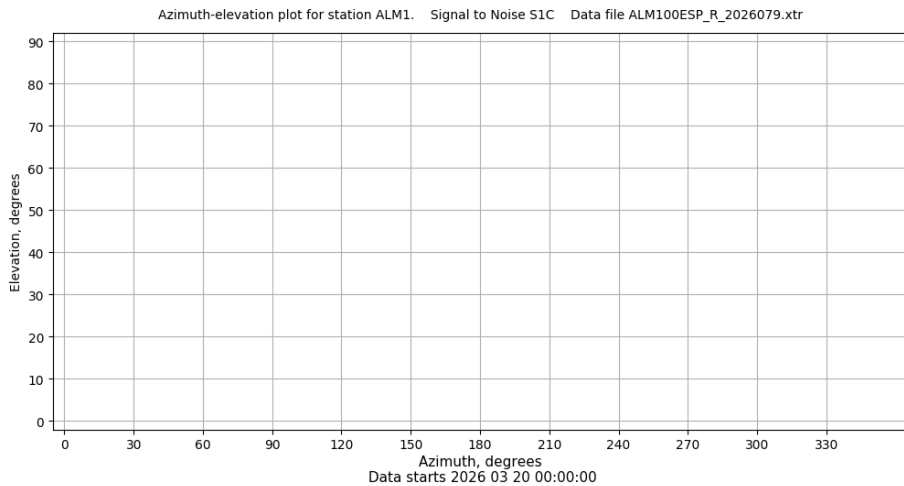
Control de calidad GNSS GAL diario

Estacion: ALM1
 Fecha: 2026 03 20
 Dia del año: 079

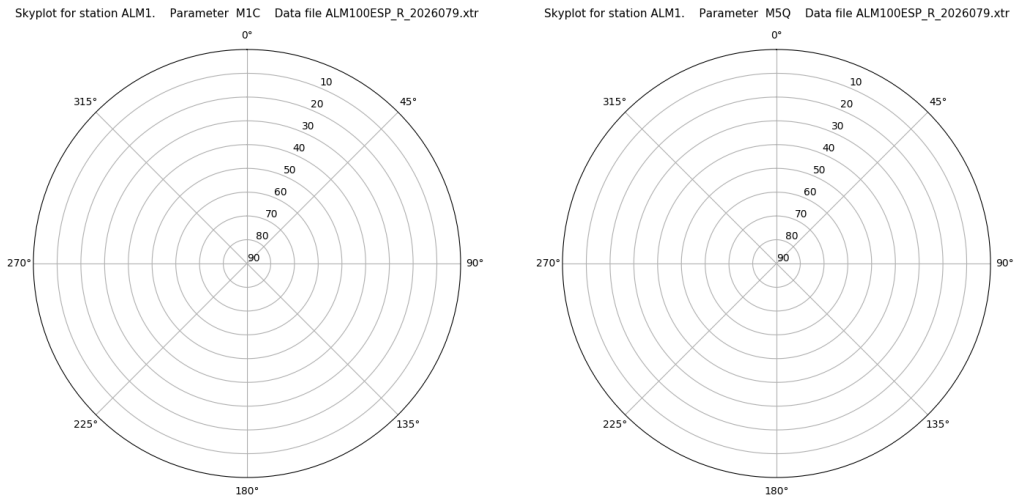
Señal-Ruido GAL E1 y E5



Azimut-Elevacion



Multipath GAL E1 y E5



Tiempo-Elevacion

