

# Control de calidad GNSS GPS diario

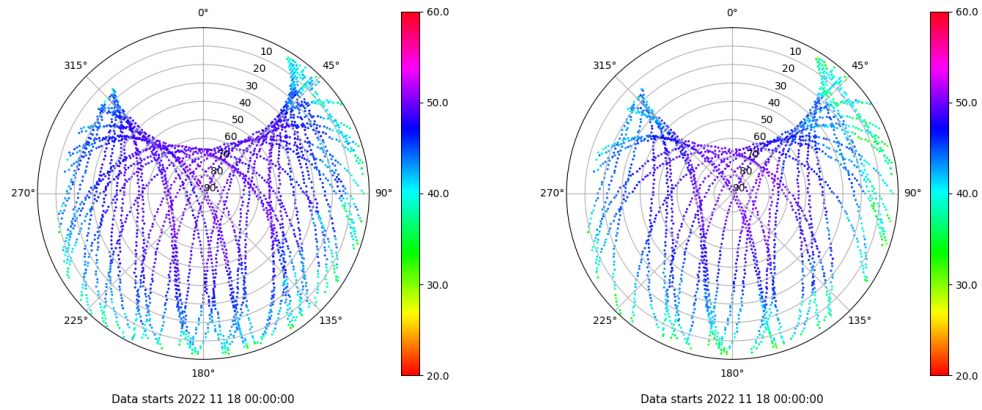
Estacion: ALM1

Fecha: 2022 11 18

Dia del año: 322

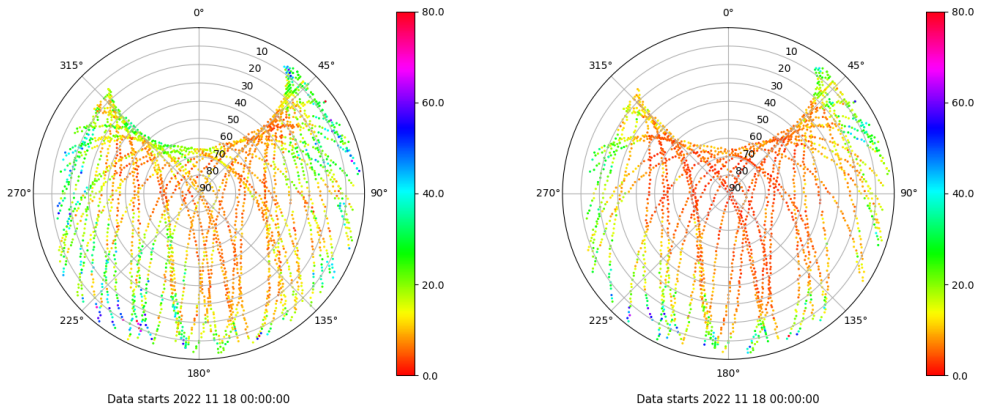
## Señal-Ruido GPS L1 y L2

Skyplot for station ALM1. Signal to Noise S1C Data file ALM100ESP\_R\_2022322.xtr Skyplot for station ALM1. Signal to Noise S2S Data file ALM100ESP\_R\_2022322.xtr



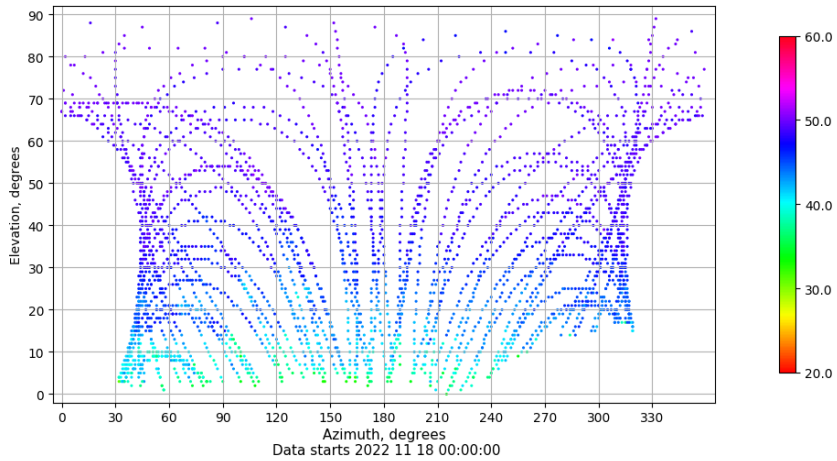
## Multipath GPS L1 y L2

Skyplot for station ALM1. Parameter M1C Data file ALM100ESP\_R\_2022322.xtr Skyplot for station ALM1. Parameter M2S Data file ALM100ESP\_R\_2022322.xtr



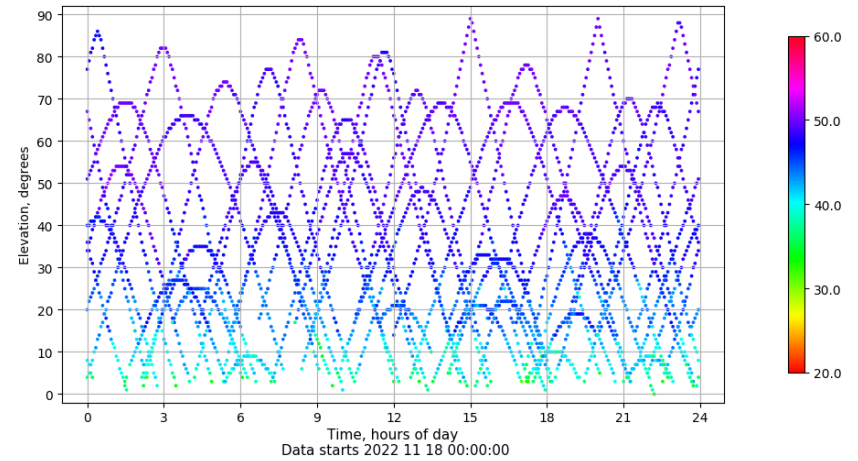
## Azimuth-Elevacion

Azimuth-elevation plot for station ALM1. Signal to Noise S1C Data file ALM100ESP\_R\_2022322.xtr



## Tiempo-Elevacion

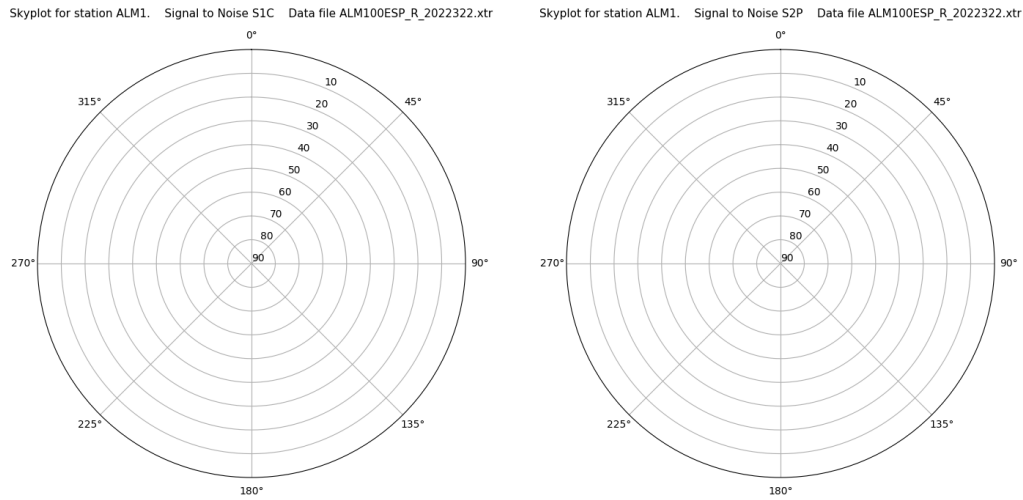
Time-elevation plot for station ALM1. Signal to Noise S1C Data file ALM100ESP\_R\_2022322.xtr



# Control de calidad GNSS GLO diario

Estacion: ALM1  
 Fecha: 2022 11 18  
 Dia del año: 322

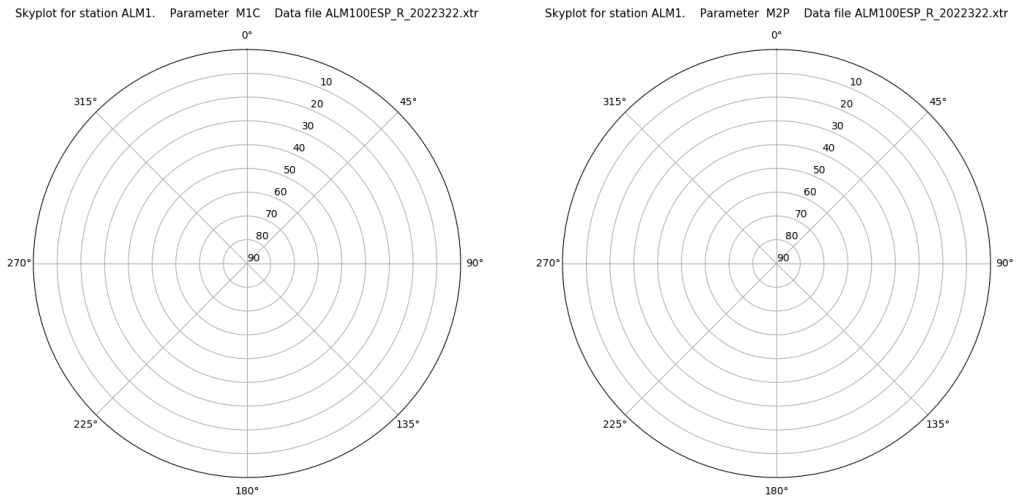
## Señal-Ruido GLO L1 y L2



Data starts 2022 11 18 00:00:00

Data starts 2022 11 18 00:00:00

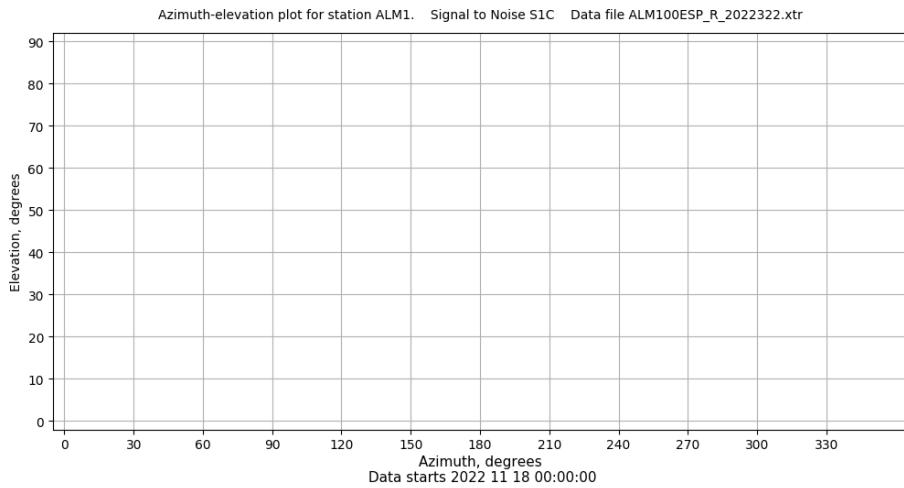
## Multipath GLO L1 y L2



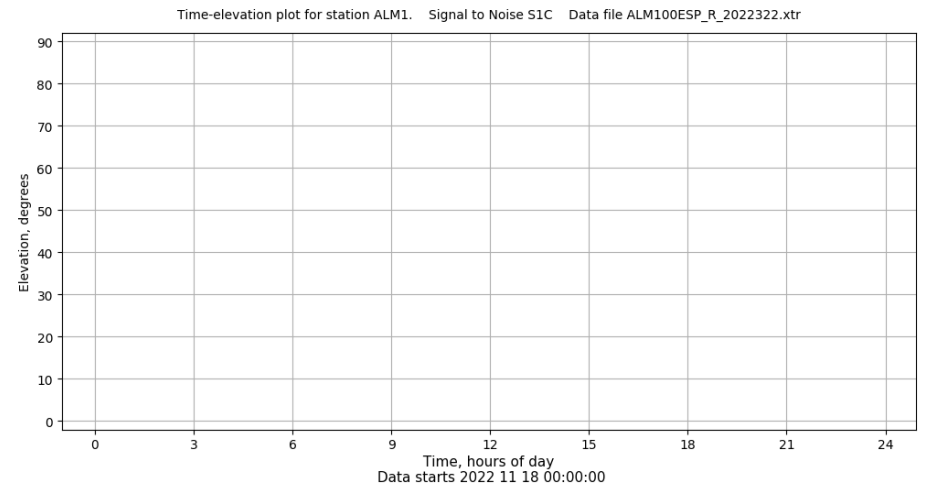
Data starts 2022 11 18 00:00:00

Data starts 2022 11 18 00:00:00

## Azimut-Elevacion



## Tiempo-Elevacion

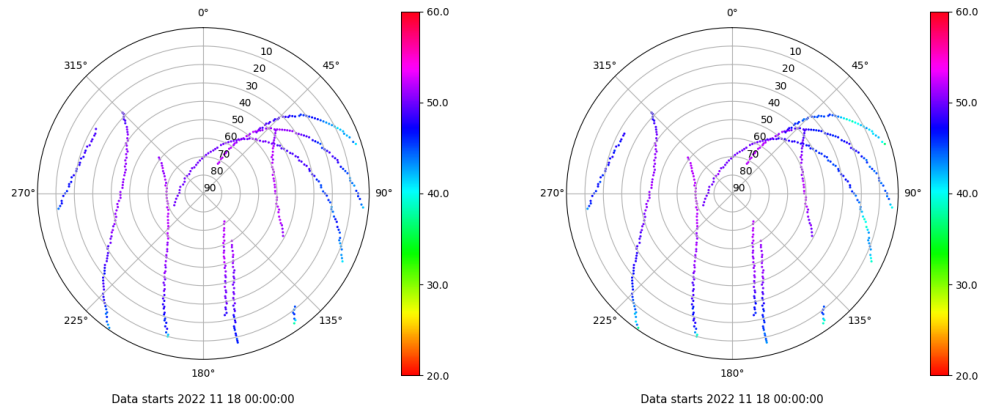


# Control de calidad GNSS GAL diario

Estacion: ALM1  
 Fecha: 2022 11 18  
 Dia del año: 322

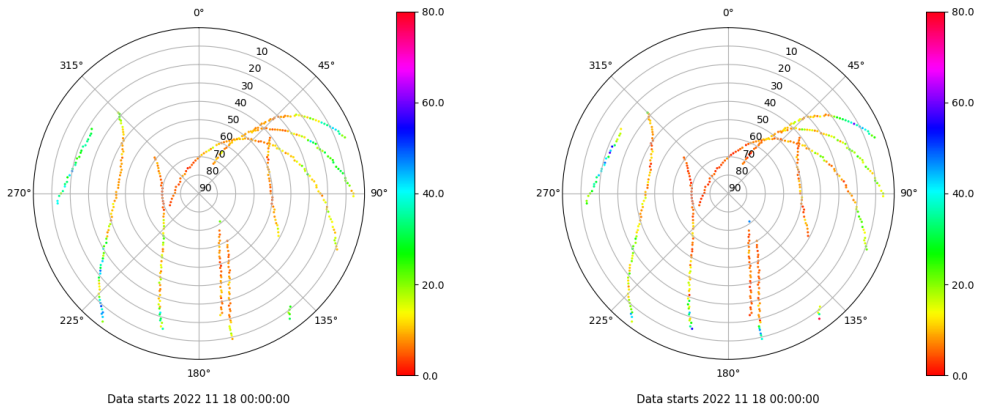
## Señal-Ruido GAL E1 y E5

Skyplot for station ALM1. Signal to Noise S1C Data file ALM100ESP\_R\_2022322.xtr Skyplot for station ALM1. Signal to Noise S5Q Data file ALM100ESP\_R\_2022322.xtr



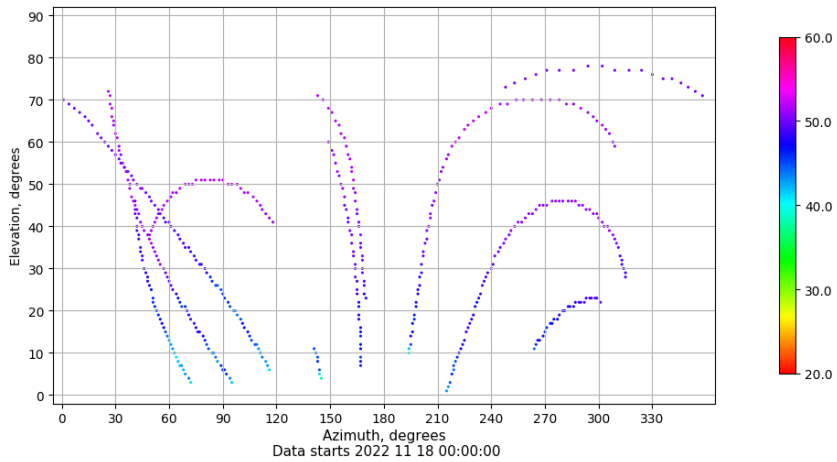
## Multipath GAL E1 y E5

Skyplot for station ALM1. Parameter M1C Data file ALM100ESP\_R\_2022322.xtr Skyplot for station ALM1. Parameter M5Q Data file ALM100ESP\_R\_2022322.xtr



## Azimuth-Elevacion

Azimuth-elevation plot for station ALM1. Signal to Noise S1C Data file ALM100ESP\_R\_2022322.xtr



## Tiempo-Elevacion

Time-elevation plot for station ALM1. Signal to Noise S1C Data file ALM100ESP\_R\_2022322.xtr

