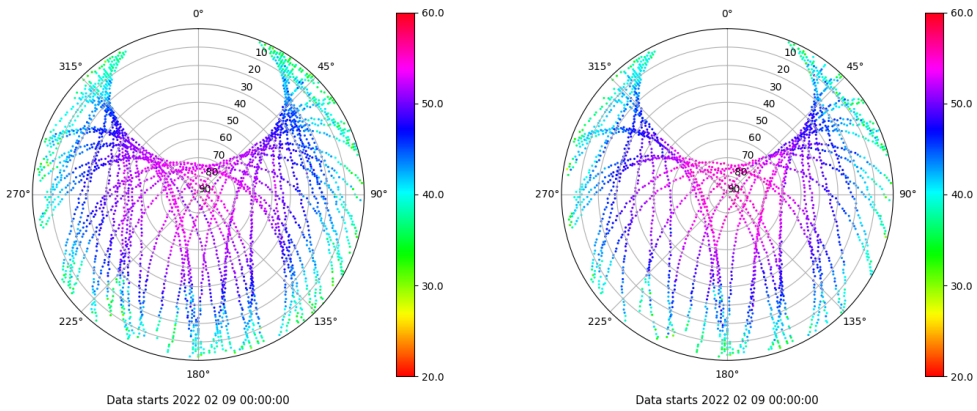


# Control de calidad GNSS GPS diario

Estacion: ACOR  
 Fecha: 2022 02 09  
 Dia del año: 040

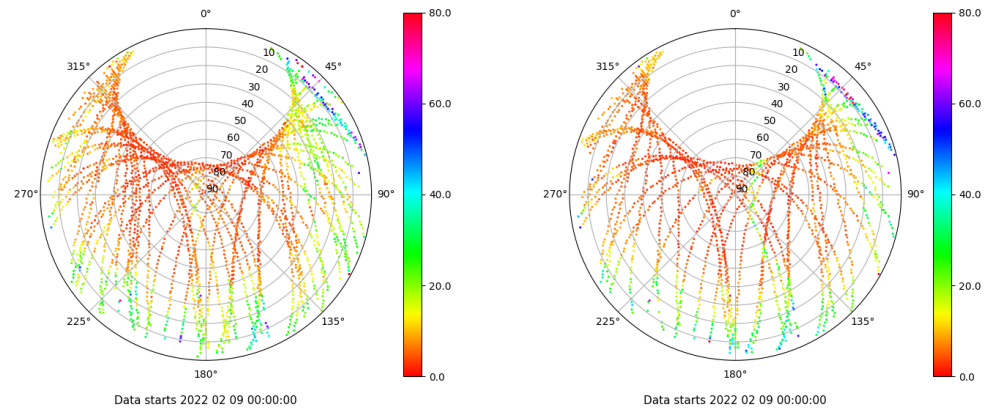
## Señal-Ruido GPS L1 y L2

Skyplot for station ACOR. Signal to Noise S1C Data file ACOR00ESP\_R\_2022040.xtr Skyplot for station ACOR. Signal to Noise S2S Data file ACOR00ESP\_R\_2022040.xtr



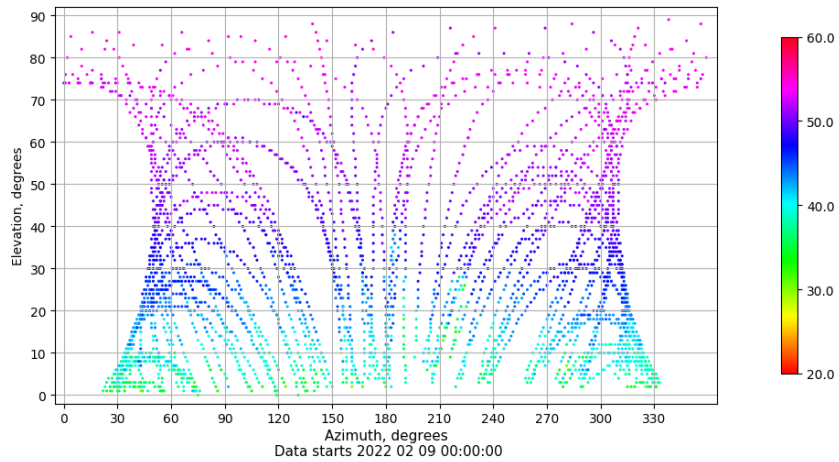
## Multipath GPS L1 y L2

Skyplot for station ACOR. Parameter M1C Data file ACOR00ESP\_R\_2022040.xtr Skyplot for station ACOR. Parameter M2S Data file ACOR00ESP\_R\_2022040.xtr



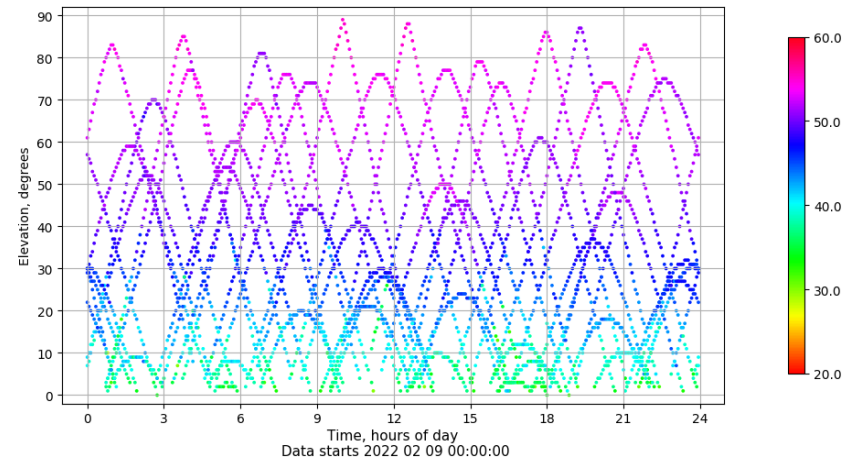
## Azimuth-Elevacion

Azimuth-elevation plot for station ACOR. Signal to Noise S1C Data file ACOR00ESP\_R\_2022040.xtr



## Tiempo-Elevacion

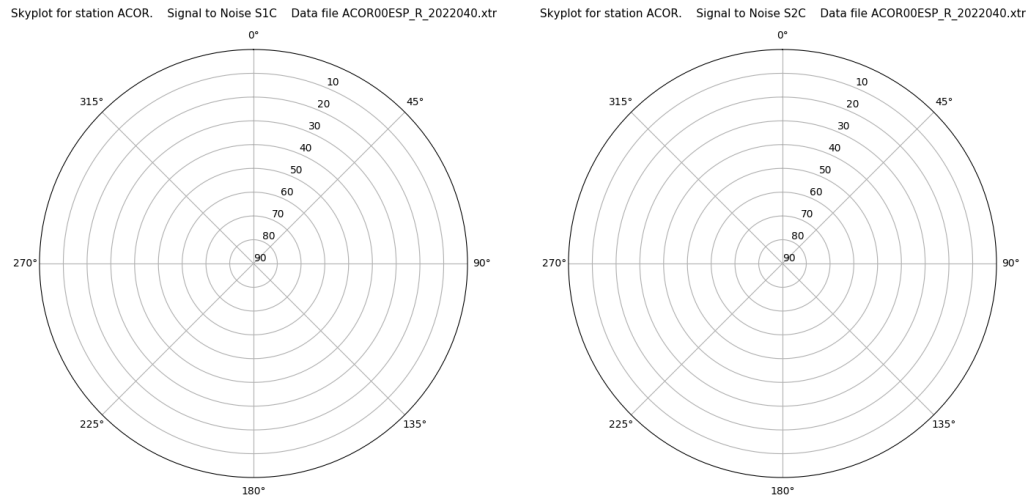
Time-elevation plot for station ACOR. Signal to Noise S1C Data file ACOR00ESP\_R\_2022040.xtr



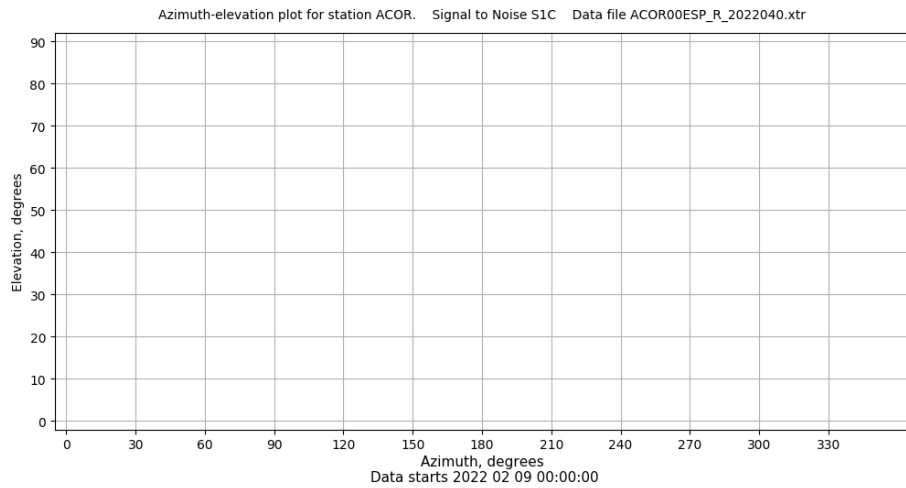
# Control de calidad GNSS GLO diario

Estacion: ACOR  
 Fecha: 2022 02 09  
 Dia del año: 040

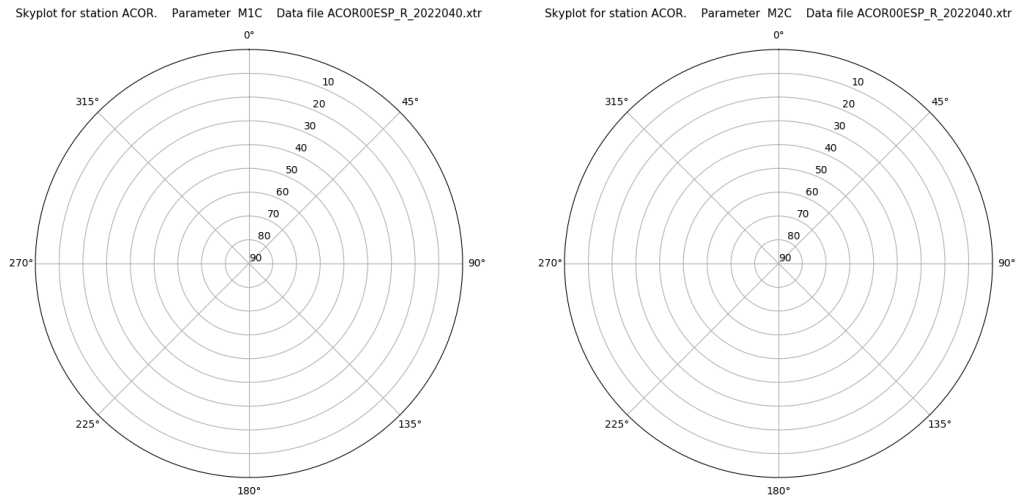
## Señal-Ruido GLO L1 y L2



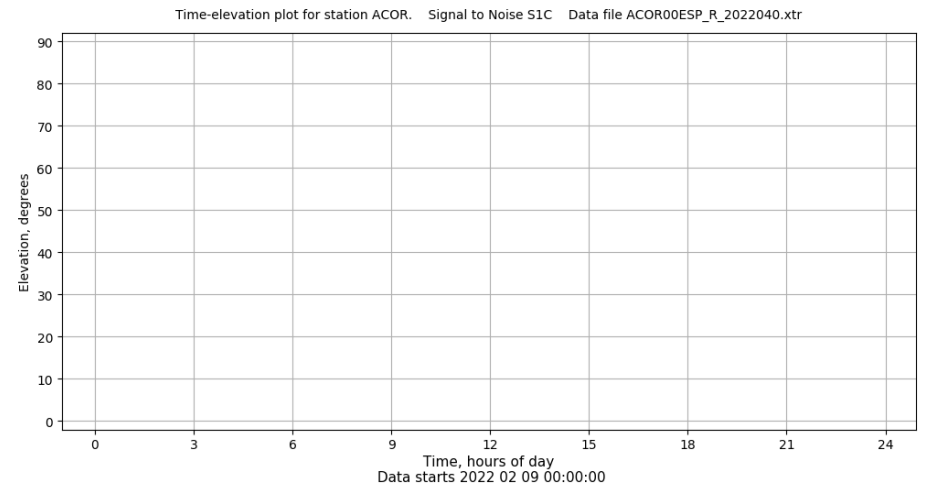
## Azimut-Elevacion



## Multipath GLO L1 y L2



## Tiempo-Elevacion

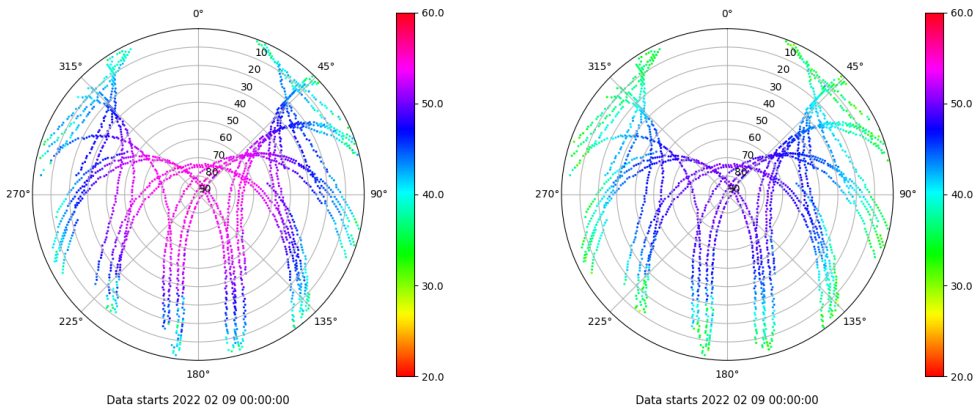


# Control de calidad GNSS GAL diario

Estacion: ACOR  
 Fecha: 2022 02 09  
 Dia del año: 040

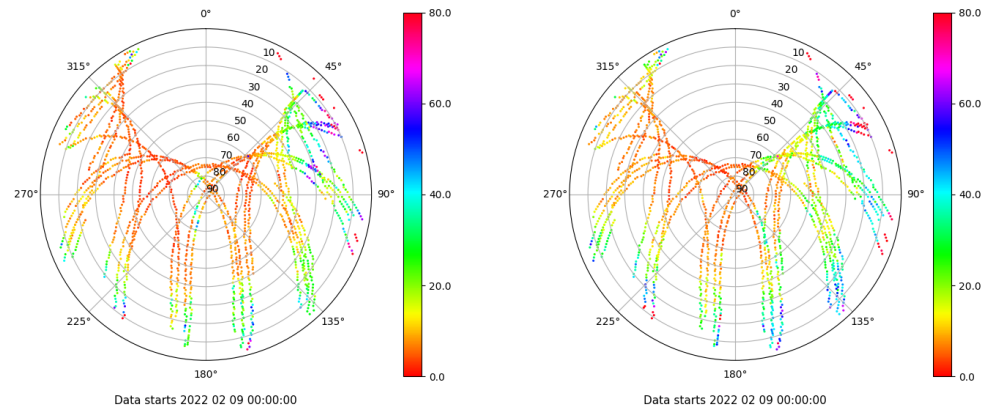
## Señal-Ruido GAL E1 y E5

Skyplot for station ACOR. Signal to Noise S1C Data file ACOR00ESP\_R\_2022040.xtr Skyplot for station ACOR. Signal to Noise S5Q Data file ACOR00ESP\_R\_2022040.xtr



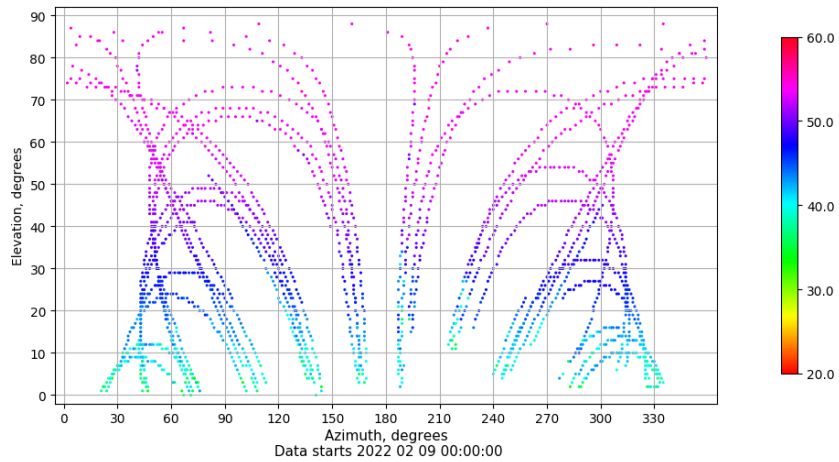
## Multipath GAL E1 y E5

Skyplot for station ACOR. Parameter M1C Data file ACOR00ESP\_R\_2022040.xtr Skyplot for station ACOR. Parameter M5Q Data file ACOR00ESP\_R\_2022040.xtr



## Azimut-Elevacion

Azimuth-elevation plot for station ACOR. Signal to Noise S1C Data file ACOR00ESP\_R\_2022040.xtr



## Tiempo-Elevacion

Time-elevation plot for station ACOR. Signal to Noise S1C Data file ACOR00ESP\_R\_2022040.xtr

